

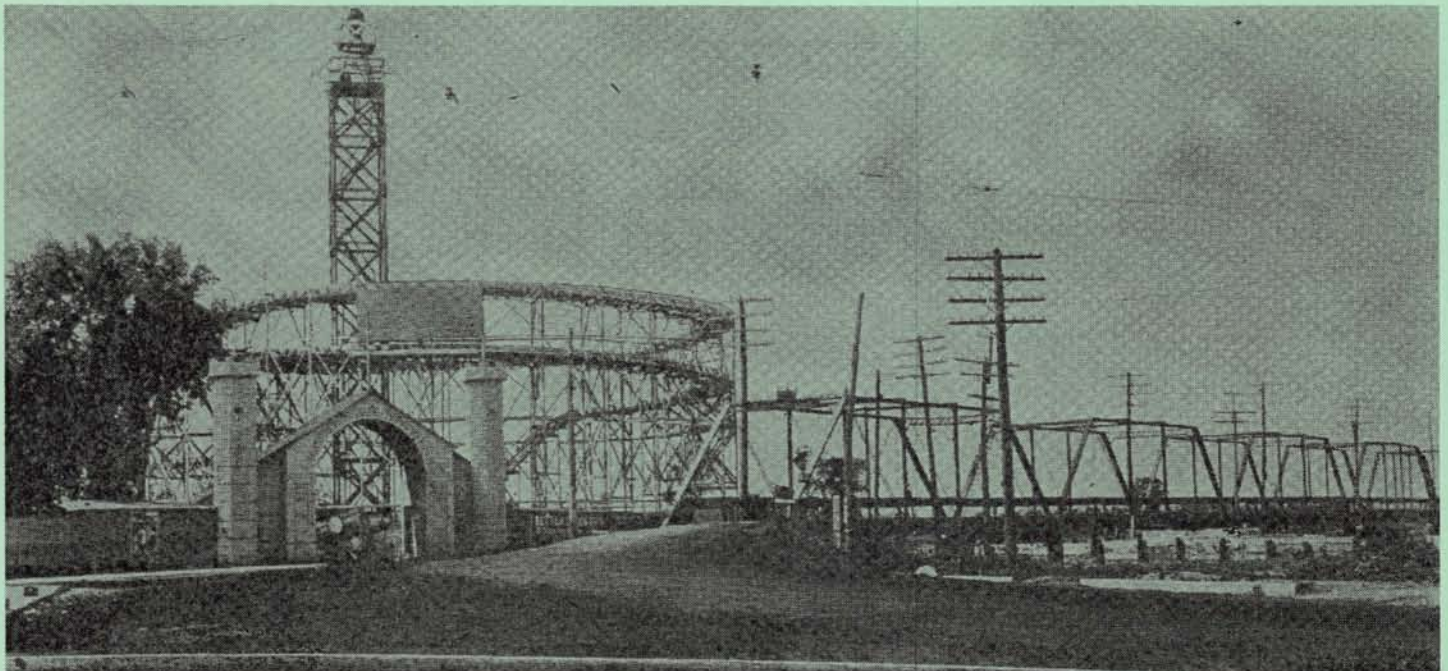


THE SUNFLOWER

Reno County Genealogical Society

P. O. Box 5

Hutchinson, Kansas 67504-0005



ENTRANCE TO RIVERSIDE PARK AND ARKANSAS RIVER BRIDGE, HUTCHINSON, KANSAS

Volume 32, No. 2

May 2010

The Reno County Genealogical Society of Hutchinson, Kansas was founded in 1978 for the purpose of fostering genealogical research, promoting the exchange of information and encouraging the deposit of genealogical and historical materials in established libraries and archives. Membership in the Reno County Genealogical Society is open to anyone interested in genealogy or local history. Dues are Level 1: \$12.00 or Level 2: \$15.00 per year, per couple from January 1 to December 31 each year. Meetings are held the third Monday of each month in the Auditorium of the Hutchinson Public Library, 9th and Main, 7:00 – 8:45 P. M.

2010 Board Members

RCGS Officers

President	VACANT
Vice President *	Karen Burgess
Treasurer	Kendall Griggs
Recording Secretary	Vivian Gobin
Corresponding Secretary	Sheila Sage

[* Includes Program & Membership Chair]

RCGS Email:

RenoCoGenSoc@gmail.com

RCGS Web Site: 3 ways to find us on the web

<http://rootsweb.com/~ksrcgs>

<http://tinyurl.com/RenoCoGenSoc>

<http://bit.ly/RenoCoGenSoc>

RCGS Committees

Historian	Rita Lingg
Kansas Room Visitor Book	Sally Eubanks
Obituary Coordinator	Kathleen Dankanyin
Publication Sales	Sandy Wedman
Quarterly & eNews Editor	Gale Wall
Research Chairman	Rita Lingg
Web Coordinator	Gale Wall

The Sunflower is published quarterly by the

Reno County Genealogical Society

P. O. Box 5 - Hutchinson, KS 67504-0005

ISSN 1048 - 048X

Editor: Gale Stafford Wall, Hutchinson, KS

The Sunflower is indexed in the Periodical Source Index [PERSI] of the Allen County Public Library Foundation

The Sunflower welcomes your articles and photographs on your Reno County ancestors.

Your Reno County ancestor biographies and photos are requested for future issues of *The Sunflower*. You can feature one person or a family unit. Please email Gale Wall with questions at RenoCoGenSoc@gmail.com.



The Reno County Genealogical Society is a member of the Federation of Genealogical Societies and the Kansas Council of Genealogical Societies.

In This Issue

Editor's Note New Members On The Cover	32
News & Notes RCGS Programs	33
Descendent of a Salem Witch	34-35
Photos & Postcards	36
On Assignment	37
Henry M. Rudesill Pupil Ledger, completed	38-40
Henry M. Rudesill	41
The O'Sullivan Family	42
History Recorded by Mortimer O'Sullivan	43
St. Teresa Cemetery	44
The Tragic Death of Laura Fife	45
Alumni of Hutchinson High School, cont'd	46-51
RCGS Membership List	52
Links Forgotten Settlers of Kansas Publications Order Form	53
RCGS Membership Application Research Centers	54
Surname Index	55
Seen at the Museum	Back cover

Editor's Note



This issue will reach you a little later than usual. I've had a hard time trying to focus on my duty as your editor this year. My son, Clayton, deployed this month and after 2 weeks finally reached his final destination in Afghanistan. This experience will prove to be a test of my faith and sanity before he returns home next year. You may follow us on this journey at dearclayton.blogspot.com. Please consider sharing your Reno County family or helping with an article in the issues ahead.

For the past year I've had the opportunity to get to know two people at the Reno County Museum/Historical Society; Lynn Ledeboer and Jamin Landavazo. They are an asset to the museum and always willing to go the extra mile to help. We want to work together to help those needing local research assistance. I encourage you to consider supporting RCM with your membership or donations. For our members out of the area I would offer that you bloom where you are planted and now have roots, and support your local societies too. Visit the RCM web site and check out the research assistance they offer. You will also find a membership application there as well. Both of these can be found on the resources tab. <http://www.renocomuseum.org/>

New Members

- Gene Algrim, Hutchinson, KS
- Don Wilson, Sarasota, FL
- Connie Kincaid, Hutchinson, KS
- Maureen Wilburn, Dacula, GA
- Diana Clark, Kansas City, MO
- Judy Ghere, Hutchinson, KS
- Doris Lestishen, Hutchinson, KS
- Debbie Mock, Hutchinson, KS

WELCOME!

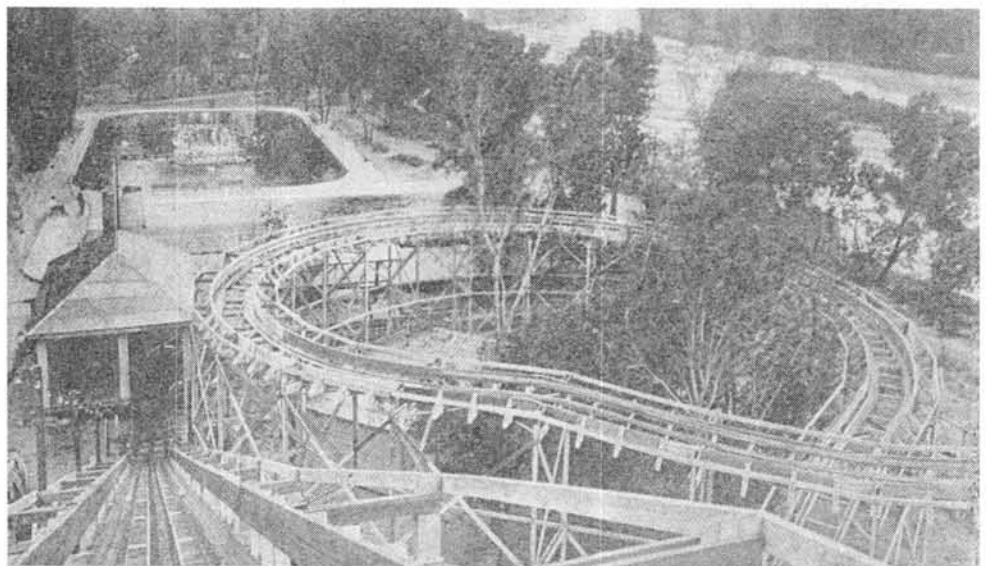
**New members - Do we have your email?
Don't miss our monthly eNews!**

On The Cover

Cover photo and photo on page 45, also seen here, courtesy of "Historical Photo Reproductions of Hutchinson", by Steve Conard and Steve Harmon.

If you are looking for a historical photo or postcard pertaining to Reno County you may want to give them a call.

620-560-5283



Pub. by The Rorabaugh-Wiley Dry Goods Co., Hutchinson, Kans.
BIRDSEYE VIEW RIVERSIDE PARK ROLLER COASTER.

News & Notes

- Your Reno County ancestor stories and photos are requested for future issues of *The Sunflower*. You can feature one person or a family unit.
- Another genealogy magazine has ceased publication. Discovering Family History magazine ended with the March / April 2010 issue. This is the 3rd genealogy magazine to end since last year. It joins Everton's Genealogical Helper and Ancestry. That leaves 3 still in print: Family Tree, Family Chronicle and Internet Genealogy.
- Blog News: we are making our blog our main tool of timely communication. This is the best option instead of emails to you each time and this way the information remains available should you need it again later. **Please SIGN UP** for the email subscription. You will get an email at the end of the day if a new post has been published.
- Program Note: We are switching our June and July programs around.

RCGS 2010 Programs

1/18 Genealogy Traps

- Traps to avoid in your research

2/15 Re-burying A Lost Ancestor

- Hear the journey of locating a lost ancestor

3/15 Genealogy Toolbox

- Research toolbox: forms, magazines, newsletters

4/19 Tracking Your Roots

- Map Resources - Canceled

5/17 Coming To America

- Immigration Timeline

6/21 Filling in the Blanks

- Missing Census Resources

7/19 Cemetery Art & Symbolism

- Beauty found in the cemetery.

8/16 Family News

- Newspaper Research

9/20 Military Heritage

- Record Resources

10/18 Annual Potluck

- Delos Smith Ctr
- Bring a covered dish and show & tell item

11/15 What's in a Name?

- Nicknames & short names

12/13 Board meeting only

See you there!

Descendent of a Salem Witch



Grace Maxey Rexroad

My grandmother, Grace Maxey Rexroad, used to tell us that long, long ago there was a witch in our family – a real witch! This was pretty scary to my sisters and me when we heard the story as children, and it became even scarier in our imaginations when we saw the movie *The Wizard of Oz*. Who wants to have someone like the Wicked Witch of the West in their family?

As we grew older, my sisters and I came to disbelieve the story. It sounded a bit far-fetched and we really didn't want to believe it anyway. It faded from our thoughts as the years passed. Later in my life I took up the task of writing some family history and I remembered that story. It was no longer scary but intriguing, so I dug into it. The story turned out to be true. The witch was Susanna Martin, Grace's 6-g grandmother. She was one of the infamous "Witches of Salem."

Grandmother Grace's mother was Martha Ella Martin (married James Maxey). She was the daughter of Daniel W. Martin who had come to Kansas from Massachusetts in the 1860s. I tracked Daniel Martin's Massachusetts ancestors back several generations to George Martin, born 1618. In 1646 he married Susanna North, born 1621 in England. They had eight children.

Susanna was first charged with witchcraft as early as 1669. Her husband George sued the accuser for slander that time though, and prevailed. Susanna was acquitted. But she was charged again with "sundry acts of witchcraft" in 1692. She was a widow by then and with no husband to protect her, she was arrested on 2 May of that year and thrown into the Salem jail where she languished for two months in filth and isolation. Twice she suffered the humiliation of being examined to determine if she had a "witch's teat" used to suckle the devil. The magistrates thought she did.

When Susanna was brought into the courtroom for her preliminary hearing on 26 June 1692, some young girls in attendance began staging fits, and did so again when she looked in their direction. The girl's parents said it was because Susanna had put a spell on them. Susanna laughed at the girls and was scolded by the magistrate for doing so. She argued with him and he committed her.

At her trial the next day, several witnesses appeared against Susanna. One accuser told of a dispute with her and claimed she flew away when he threatened her. Two men accused her of bringing death to their cows and oxen. Another claimed to have been nearly killed when attacked by a she-devil in the form of a cat, as he said Susanna had threatened. These and other bizarre accusations resulted in her conviction and sentence to be hanged. She and four others were hung on 19 July 1692. They were buried in a common grave without markers.



The hysteria over witches in Salem, Massachusetts resulted in the execution of 22 people before it ended. Nearly 200 others who had been jailed for witchcraft were released in 1693 by order of the governor of Massachusetts after his own wife was accused by the afflicted teenage girls. Measures to exonerate the supposed witches began as early as 1711. Some were exonerated but a few were overlooked in the process. Only centuries later, in October 2001, did the governor of Massachusetts sign a bill that exonerated Susanna Martin and four others.

And thus we of this family line were finally able to breathe a sigh of relief upon learning that we are not accursed, not possessed by evil spirits, that we carry no witch's DNA. Our ancestor was not a witch!

Shared by Bill Rexroad.

Photos

Opposite, top:

Bill's grandmother, Grace G. Maxey [married Edgar Rexroad] thought to have been taken about 1896 when she was eighteen years old. It was Grace who told about there being a witch in the family.

Opposite, bottom:

A memorial plaque at the home of Susanna Martin in Amesbury, Massachusetts.

Right:

A 1964 newspaper clipping of Ripley's Believe It or Not, featuring Susanna Martin.

Ripley's Believe It or Not!

THE CHURCH THAT WAS BUILT WITH \$112.50!
Genoa, Italy

BENDINELLI SAULI of Genoa DEPOSITED 50 GOLDPIECES (\$112.50) IN A BANK IN 1481, STIPULATING THAT THE MONEY WAS TO GATHER INTEREST UNTIL THE PRINCIPAL WAS SUFFICIENT TO ERECT A CHURCH-- 122 YEARS LATER IT TOTALLED \$50,000 --AND BUILT THE MAGNIFICENT CHURCH OF SANTA MARIA ASSUNTA

SUSANNAH NORTH MARTIN
WAS HANGED AS A WITCH IN Salem, Mass., BECAUSE SHE COULD WALK DOWN A MUDDY STREET AND KEEP HER SKIRT CLEAN
July 19, 1692

THE AODAD OF North Africa IS BOTH A SHEEP AND A GOAT

8-17

© King Features Syndicate, Inc., 1964. World rights reserved

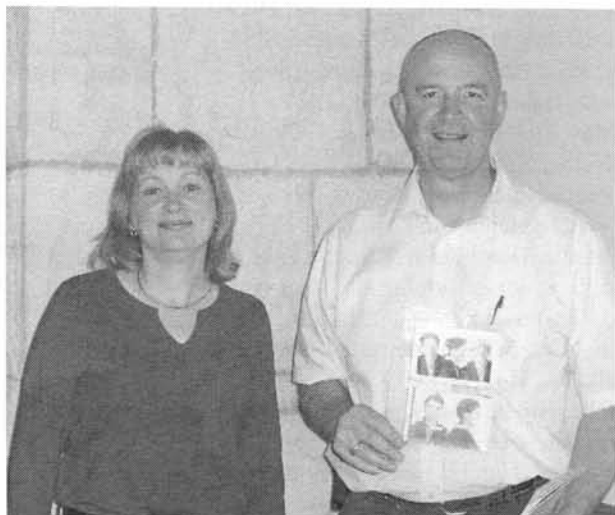
Photos & Postcards



RCGS member, Nancy Moore, made a visit to Hutchinson recently with her two lovely daughters Juel and Joy. It was fun to meet her and have a face to go with the name that I communicate with via email. Local historian, Steve Conard, also stopped by to share Hirst photos with Nancy. She is the great granddaughter of Samuel Hirst, one of Hutchinson's early photographers.



On Assignment



During one of our early warm spring days Kathleen and I were in Kingman County, in the middle of a cemetery, when my cell phone rang. To my surprise it was Warden Sam Cline of the Hutchinson Correctional Facility. He wanted to know if I would be interested in working on a research project for him. Of course I said yes. The task: find living family for Lee White, an officer that died from injuries he sustained when 2 inmates escaped in 1928. Original plans were to include Lee in the annual state memorial service before it was discovered he had been included in the 1993 service. A local service is planned this month in the Eastside Cemetery.

Lee White had no children and 3 siblings. I enlisted the help of Rita Lingg and Kathleen Dankanyin to trace the family lines of his siblings, Louis, Lena and Laura. Through Laura's line I was able to locate to great nephews living close to Hutchinson. They will be invited to the service.

Lee was born in 1898 to Charles L. and Florence Caldwell White. He died in the early morning hours of July 26, 1928 from head injuries he sustained during a car chase, in which the vehicle he was in wrecked, trying to capture 2 escaped inmates. He was buried in the Eastside Cemetery next to his mother. His mother Florence, was the daughter of A. B. Caldwell an early settler of Reno County and civil war veteran.



Left: Grave of Lee White at Eastside Cemetery



Right: Gale Wall, Rita Lingg, Kathleen Dankanyin, Warden Sam Cline. Meeting with the Warden and tour of HCF.



Henry Rudesill Pupil Ledger, cont'd

- Pace, Bob, Hutchinson, Kansas, 1935
 Pace, Esther, Hutchinson, Kansas, 1933
 Pace, Rex, Hutchinson, Kansas, 1933
 Pafoe, Mary, Oberlin, Ohio, 1894
 Page, Lena, Hutchinson, Kansas, 1902
 Palmer, Helen, Hutchinson, Kansas, 1904
 Park, D. Mrs., Hutchinson, Kansas, 1911
 Park, Georgia L., Hutchinson, Kansas, 1918
 Parker, Agusta, Hutchinson, Kansas, 1908
 Parker, Dorma, Hutchinson, Kansas, 1907
 Parks, Bertha, Hutchinson, Kansas, 1901
 Payne, Clifford, Hutchinson, Kansas, 1907
 Payne, Dorothy, Hutchinson, Kansas, 1909
 Payne, Lillie, Hutchinson, Kansas, 1902
 Payne, Lloyd, Hutchinson, Kansas, 1910
 Payne, Ralph, Hutchinson, Kansas, 1910
 Pennington, Bessie, Hutchinson, Kansas, 1911
 Pentz, Ruth, Hutchinson, Kansas, 1910
 Perkinson, Ana, Arlington, Kansas, 1902
 Peters, Victoria, Hutchinson, Kansas, 1929
 Petrosky, Charlotte, Hutchinson, Kansas, 1918
 Petrosky, Loretta, Hutchinson, Kansas, 1918
 Pettit, Zena, Hutchinson, Kansas, 1909
 Pettit, Jane, Hutchinson, Kansas, 1929
 Phillips, Bernice, Hutchinson, Kansas, 1907
 Phillips, Gilbert, Hutchinson, Kansas, 1935
 Phillips, Mildred, Hutchinson, Kansas, 1916
 Phippen, Stella, Hutchinson, Kansas, 1902
 Pierson, Gertie, Kinsley, Kansas, 1895
 Ping, Jessie, Hutchinson, Kansas, 1915
 Pinyerd, Pauline, Hutchinson, Kansas, 1909
 Pope, Jessie, Hutchinson, Kansas, 1916
 Popp, J. Mrs., Kinsley, Kansas, 1896
 Porter, E. L. Mrs., Hutchinson, Kansas, 1909
 Porter, Myrtle, Hutchinson, Kansas, 1908
 Pound, Elizabeth, Hutchinson, Kansas, 1920
 Pratz, Margretta, Hutchinson, Kansas, 1906
 Pratz, Nellie, Hutchinson, Kansas, 1906
 Price, Mary, St John, Kansas, 1899-1920
 Price, Ruth, Hutchinson, Kansas, 1922
 Proctor, Paul, Hutchinson, Kansas, 1918
 Pudge, Flossie, Hutchinson, Kansas, 1915
 Pueblo, Landis Mrs., Castleton, Kansas, 1905
 Pugh, Helen, Hutchinson, Kansas, 1902
 Pursel, Edna, Hutchinson, Kansas, 1906
 Rabun, Mildred, Hutchinson, Kansas, 1910
 Radabaugh, Iva, Hutchinson, Kansas, 1897
 Radabaugh, Iva, St John, Kansas, 1899-1940
 Radabaugh, Winnifred, Hutchinson, Kansas, 1896
 Raichy, John, Hutchinson, Kansas, 1917
 Randall, Florence, Hutchinson, Kansas, 1910
 Randall, Helen, Hutchinson, Kansas, 1910
 Randle, Ruth, Hutchinson, Kansas, 1907
 Rank, Ruby, Hutchinson, Kansas, 1918
 Rantledge, Chester, Hutchinson, Kansas, 1901
 Rantledge, Goldie, Hutchinson, Kansas, 1901
 Raunzahn, Leo, Hutchinson, Kansas, 1901
 Rawlings, Alma, Hutchinson, Kansas, 1909
 Rawlings, Ray, Burrton, Kansas, 1929
 Rawlings, Verta, Hutchinson, Kansas, 1919
 Rawson, Bertha, Hutchinson, Kansas, 1898
 Rawson, May, Hutchinson, Kansas, 1895
 Rayl, Cora, Hutchinson, Kansas, 1924
 Rayle, May, Hutchinson, Kansas, 1909
 Reece, Nellie, Hutchinson, Kansas, 1910
 Reece, Pearl, Hutchinson, Kansas, 1910
 Rehm, Vera, Hutchinson, Kansas, 1911
 Reiser, Manie, Hutchinson, Kansas, 1911
 Rexroad, B. S. Mrs., Hutchinson, Kansas, 1902
 Rexroad, Gerald, Hutchinson, Kansas, 1910
 Reynolds, Alta, St John, Kansas, 1899-1925
 Rice, Rilla M., Hutchinson, Kansas, 1907
 Rice, Stella, Hutchinson, Kansas, 1908
 Ridgeway, Eunnice, Hutchinson, Kansas, 1912
 Rigby, Eugene, Hutchinson, Kansas, 1920
 Rigby, Lucile, Hutchinson, Kansas, 1920
 Rimbey, Linnie, Castleton, Kansas, 1905
 Ring, Dot, St John, Kansas, 1899-1916
 Ring, Wayne, St John, Kansas, 1899-1915
 Rishel, Dwight, Hutchinson, Kansas, 1908
 Rishel, Glenn, Hutchinson, Kansas, 1910
 Rishel, May, Hutchinson, Kansas, 1908
 Ritter, Minnie Mrs., Hutchinson, Kansas, 1916
 Rittgers, Wm. Glea, Hutchinson, Kansas, 1928
 Rizor, B. M. Mrs., Hutchinson, Kansas, 1902
 Robbins, Lottie, Hutchinson, Kansas, 1907
 Roberts, Betty, Hutchinson, Kansas, 1932
 Roberts, Edna, Hutchinson, Kansas, 1903
 Roberts, Olive, Hutchinson, Kansas, 1904
 Roberts, Roberta, Hutchinson, Kansas, 1932
 Robertson, Leah, Hutchinson, Kansas, 1910
 Robinson, Catheryn, Hutchinson, Kansas, 1924
 Robinson, Charlotte, Hutchinson, Kansas, 1911
 Robinson, Leila, Hutchinson, Kansas, 1911
 Robinson, Margaret, Hutchinson, Kansas, 1924
 Rogers, Helen, Hutchinson, Kansas, 1909
 Rogers, Lilian, Hutchinson, Kansas, 1908
 Roscrans, Hazel, Hutchinson, Kansas, 1911
 Roscrans, Vernal, Hutchinson, Kansas, 1911
 Ross, Pearl, St John, Kansas, 1899-1941
 Rosswel, Louisa, Hutchinson, Kansas, 1919
 Roy, Alice, Sterling, Kansas, 1900-1901
 Roy, Bessie, Sterling, Kansas, 1900-1901
 Roy, Edith, Sterling, Kansas, 1900-1901
 Rudesill, M. L. Mrs., Sharon Ctr., Ohio, 1890
 Rudicel, Revae, Burrton, Kansas, 1928
 Rummell, Mark, Kinsley, Kansas, 1895
 Ruth, Edna, Halstead, Kansas, 1895
 Ruth, Millie, Halstead, Kansas, 1895
 Sager, Dr. Mrs, Hutchinson, Kansas, 1900
 Sandon, Mabel, Hutchinson, Kansas, 1909
 Sapplington, Naomi, Hutchinson, Kansas, 1911
 Saunders, Julah, Hutchinson, Kansas, 1901
 Saunders, Lena, Hutchinson, Kansas, 1900
 Schall, Flay, Hutchinson, Kansas, 1903
 Schall, H. S., Hutchinson, Kansas, 1902
 Schamp, Cora Mrs., Hutchinson, Kansas, 1902

Rudesill Cont'd

- Schmitz, William, Hutchinson, Kansas, 1908
 Schmucker, Martha, Hutchinson, Kansas, 1935
 Schnatterly, Bertha, Hutchinson, Kansas, 1907
 Schnatterly, Corless, Kinsley, Kansas, 1895
 Schnatterly, Mamie, Kinsley, Kansas, 1895
 Schonholz, Anna, Hutchinson, Kansas, 1916
 Schroll, Teddy, Hutchinson, Kansas, 1923
 Schwartz, Mary, Hutchinson, Kansas, 1906
 Scoresby, Grace, Hutchinson, Kansas, 1902
 Scoresby, Mary, Hutchinson, Kansas, 1902
 Scroggs, Donald, Hutchinson, Kansas, 1919
 Scroggs, W. Mrs., Hutchinson, Kansas, 1921
 Seamans, Cora, Kinsley, Kansas, 1897
 Seamons, Edith, Kinsley, Kansas, 1895
 Sears, Herschel, Hutchinson, Kansas, 1906
 Seitz, Emma, Abbyville, Kansas, 1926
 Seitz, Ester, Abbyville, Kansas, 1926
 Sellars, Henrietta, Hutchinson, Kansas, 1909
 Senne T., Haven, Kansas, 1910
 Sentey, C. N. Mrs., Hutchinson, Kansas, 1901
 Shaak, Evadna, Sterling, Kansas, 1900-1901
 Shackelford, Eunice, Hutchinson, Kansas, 1922
 Shaffer, Ethel, St John, Kansas, 1899-1914
 Shaler, Bertie, St John, Kansas, 1899-1917
 Shannon, Mrs., Hutchinson, Kansas, 1909
 Shaw, Nellie, Hutchinson, Kansas, 1908
 Shaw, Willie, Darlow, Kansas, 1901
 Sheets, Orley, Ashland, Ohio, 1890
 Shepherd, Ruth, Hutchinson, Kansas, 1908
 Shepherol, Lloyd, Hutchinson, Kansas, 1901
 Shiffer, Isabell, Hutchinson, Kansas, 1932
 Shimlness, Maud, Hutchinson, Kansas, 1898
 Shircliff, Edward, Hutchinson, Kansas, 1928
 Shively, Alma, Hutchinson, Kansas, 1916
 Shively, Guss, Hutchinson, Kansas, 1916
 Shuffecook, Genora, Hutchinson, Kansas, 1909
 Shuler, Audrey, Hutchinson, Kansas, 1906
 Shuler, Gertrude, Hutchinson, Kansas, 1909
 Shuler, Thelma, Hutchinson, Kansas, 1917
 Shunk, Edna, Hutchinson, Kansas, 1901
 Siegrist, Ester, Hutchinson, Kansas, 1914
 Siegrist, Florence, Hutchinson, Kansas, 1920
 Siegrist, Marie, Hutchinson, Kansas, 1920
 Siegrist, Tena, Hutchinson, Kansas, 1914
 Sifers, Joyce, Hutchinson, Kansas, 1908
 Silgrist, Esther, Hutchinson, Kansas, 1908
 Silgrist, Ferrah, Hutchinson, Kansas, 1908
 Smart, Mary, Kinsley, Kansas, 1897
 Smith, Chas. Mrs., Haven, Kansas, 1911
 Smith, Cora, Hutchinson, Kansas, 1909
 Smith, E. C. Mrs., Hutchinson, Kansas, 1910
 Smith, Eustace, Kinsley, Kansas, 1897
 Smith, Floyd, Hutchinson, Kansas, 1932
 Smith, Gale, Hutchinson, Kansas, 1901
 Smith, Junita, Hutchinson, Kansas, 1916
 Smith, Lina, Hutchinson, Kansas, 1904
 Smith, Merl E. Mrs., Hutchinson, Kansas, 1923
 Smith, Nita, Hutchinson, Kansas, 1897
 Smith, Ralph, Hutchinson, Kansas, 1908
 Snell, Grace, Hutchinson, Kansas, 1898
 Snell, Vera, Hutchinson, Kansas, 1898
 Snyder, Frank Mrs., Hutchinson, Kansas, 1892
 Snyder, Helen, Hutchinson, Kansas, 1906
 Snyder, Jean Lou, Hutchinson, Kansas, 1922
 Snyder, Joiley, Hutchinson, Kansas, 1893
 Snyder, Mary, Hutchinson, Kansas, 1919
 Snyder, Paul, Hutchinson, Kansas, 1909
 Snyder, Ray, Hutchinson, Kansas, 1902
 Soden, Hazel, Hutchinson, Kansas, 1906
 Space, Darlene, Hutchinson, Kansas, 1932
 Space, Lauray Lee, Hutchinson, Kansas, 1934
 Space, Violet Mrs., Hutchinson, Kansas, 1933
 Spencer, Ethel, Castleton, Kansas, 1905
 Spencer, F. H. Mrs, Newton, Kansas, 1892
 Spillman, Florence, Hutchinson, Kansas, 1905
 Stafford, Bessie, Hutchinson, Kansas, 1908
 Stallman, Lizzie, Hutchinson, Kansas, 1906
 Stallman, Lulu, Hutchinson, Kansas, 1902
 Stephenson, Hazel, Hutchinson, Kansas, 1904
 Stepp, Jeanne, Hutchinson, Kansas, 1927
 Stepp, Ray, Hutchinson, Kansas, 1927
 Stevens, Hazel, Hutchinson, Kansas, 1910
 Stevens, Lucile, Hutchinson, Kansas, 1909
 Stevenson, Louise, Hutchinson, Kansas, 1909
 Steward, Bird, Kinsley, Kansas, 1896
 Stewart, Bessie, Hutchinson, Kansas, 1925
 Stewart, Edna, Castleton, Kansas, 1905
 Stewart, Mary, Hutchinson, Kansas, 1899
 Stewart, Wilma, Hutchinson, Kansas, 1922
 Storment, R. H. Mrs., Hutchinson, Kansas, 1918
 Stoughton, Mrs., Sylvia, Kansas, 1933
 Strand, H. A. Mrs., Hutchinson, Kansas, 1907
 Strong, C. A. Mrs., Hutchinson, Kansas, 1911
 Strong, Marie, Hutchinson, Kansas, 1920
 Strong, May, Hutchinson, Kansas, 1908
 Student, City, State, Year
 Sugrue, Imogene, Hutchinson, Kansas, 1906
 Summers, Frances, Hutchinson, Kansas, 1930
 Sweet, Addie, Hutchinson, Kansas, 1892
 Sweet, Gilberta, Hutchinson, Kansas, 1908
 Sweet, Mildred, Hutchinson, Kansas, 1910
 Taggart, Eva, Hutchinson, Kansas, 1905
 Tague, Viola, Hutchinson, Kansas, 1913
 Talbolt, Nettie, Hutchinson, Kansas, 1906
 Talbott, Nettie, Hutchinson, Kansas, 1902
 Talbott, Ray, Hutchinson, Kansas, 1895
 Talbott, Urah, Hutchinson, Kansas, 1895
 Talmage, Louise, Hutchinson, Kansas, 1901
 Talmage, Myrtle, Hutchinson, Kansas, 1900
 Tamplin, Bessie, Darlow, Kansas, 1901
 Tamplin, Will, Hutchinson, Kansas, 1900
 Tanner, Jimmie, St John, Kansas, 1899-1943
 Tanner, Myrtle, St John, Kansas, 1899-1942
 Taylor, Elizabeth, Hutchinson, Kansas, 1919
 Tedrick, Flora, Hutchinson, Kansas, 1904
 Tedrick, Marjorie, Hutchinson, Kansas, 1902
 Teemley, Kate, Arlington, Kansas, 1902
 Temple, Alice, Hutchinson, Kansas, 1902

Rudesill Cont'd

- Tennis, Blanche, Hutchinson, Kansas, 1922
 Teter, Katherine, Hutchinson, Kansas, 1920
 Teter, Margaret, Hutchinson, Kansas, 1920
 Tharp, Dallace Mrs., Hutchinson, Kansas, 1934
 Thomas, Virginia, Hutchinson, Kansas, 1934
 Thompson, Bessie, Hutchinson, Kansas, 1904
 Thompson, Cora, Hutchinson, Kansas, 1902
 Thompson, Eva, Hutchinson, Kansas, 1910
 Thompson, Freeman, Hutchinson, Kansas, 1917
 Thompson, H. S. Mrs., Partridge, Kansas, 1910
 Thompson, Margaret, Hutchinson, Kansas, 1909
 Thompson, Martha, Hutchinson, Kansas, 1916
 Thompson, Pauline, Hutchinson, Kansas, 1908
 Thompson, W. C., Hutchinson, Kansas, 1906
 Thompson, William, Hutchinson, Kansas, 1913
 Tiffany, Jerald, Hutchinson, Kansas, 1898
 Tiffany, Roy, Hutchinson, Kansas, 1901
 Tonn, Alma, Hutchinson, Kansas, 1911
 Tonn, Nora, Haven, Kansas, 1913
 Totten, Mervale, Hutchinson, Kansas, 1902
 Townsend, Bernice, Hutchinson, Kansas, 1908
 Townsend, Edna, Hutchinson, Kansas, 1906
 Trezise, Carol, Hutchinson, Kansas, 1933
 Truett, Verlie Gatlin, Hutchinson, Kansas, 1920
 Tubbs, Gertrude, Kinsley, Kansas, 1897
 Tudor, Fred, St John, Kansas, 1899-1944
 Tudor, Lena, St John, Kansas, 1899-1924
 Tudor, Mary, St John, Kansas, 1910
 Turner, Helen, Sterling, Kansas, 1900-1901
 Tutley, Emma Mrs., Hutchinson, Kansas, 1924
 Tuttle, Lois, Hutchinson, Kansas, 1921
 Umstot, Ethel, Hutchinson, Kansas, 1917
 Van Horn Edith, Hutchinson, Kansas, 1913
 Van Horn Helen, Hutchinson, Kansas, 1913
 Vandivert, Louise, Kinsley, Kansas, 1895
 Vandivert, Rod, Kinsley, Kansas, 1895
 Vandivert, Will, Kinsley, Kansas, 1895
 Vosberg, J. J., Hutchinson, Kansas, 1919
 Voth, Ester, Hutchinson, Kansas, 1907
 Voth, Florence, Hutchinson, Kansas, 1907
 W. S. Mrs, Kinsley, Kansas, 1895
 Waddle, Robert, Hutchinson, Kansas, 1917
 Wadsack, Lucy, Hutchinson, Kansas, 1917
 Walker, A. R. Mrs., Hutchinson, Kansas, 1933
 Walkup, Ross Edward, Hutchinson, Kansas, 1921
 Walter, Blanche, Hutchinson, Kansas, 1909
 Wampler, Maud, Hutchinson, Kansas, 1892
 Ward, Emma, Hutchinson, Kansas, 1905
 Ware, Aline, Hutchinson, Kansas, 1907
 Warner, Paul, Hutchinson, Kansas, 1909
 Warren, Louella, Hutchinson, Kansas, 1908
 Warren, Thelma, Hutchinson, Kansas, 1914
 Watkins, Frank, Hutchinson, Kansas, 1907
 Watkins, Frank, Hutchinson, Kansas, 1908
 Watson, Harry, Hutchinson, Kansas, 1902
 Watson, Lilla, Hutchinson, Kansas, 1902
 Watson, Rose, Kinsley, Kansas, 1896
 Webb, Florence, Hutchinson, Kansas, 1908
 Webb, Fluta, Hutchinson, Kansas, 1909
 Webb, Irene, Lawrence, Kansas, 1891
 Weeks, F. B. Mrs., Hutchinson, Kansas, 1924
 Weeks, Ruth, Hutchinson, Kansas, 1910
 Welker, Hazel, Hutchinson, Kansas, 1908
 Wells, Pearl, Hutchinson, Kansas, 1909
 Wheaton, Lowell, Hutchinson, Kansas, 1919
 Whinery, Pauline, Hutchinson, Kansas, 1912
 White, Florence, Hutchinson, Kansas, 1918
 White, Gertrude, Hutchinson, Kansas, 1910
 White, Stella, St John, Kansas, 1899-1945
 Whiteside, Emogene, Hutchinson, Kansas, 1924
 Whitlock, Dorothy Jean, Hutchinson, Kansas, 1929
 Whitney, Mr., Hutchinson, Kansas, 1920
 Whittle, Evelyn, Hutchinson, Kansas, 1919
 Whittle, May, Hutchinson, Kansas, 1919
 Wiegel, G. W. Mrs., Hutchinson, Kansas, 1911
 Wiegel, Iva, Hutchinson, Kansas, 1911
 Wilcox, Jessie, St John, Kansas, 1899-1919
 Wilkinson, Edward, Hutchinson, Kansas, 1909
 Wilkinson, Louise, Hutchinson, Kansas, 1909
 Willard, Helen, Hutchinson, Kansas, 1901
 Williams, Cecil, Hutchinson, Kansas, 1929
 Williams, J. H., Hutchinson, Kansas, 1935
 Williams, J. H. Mrs., Hutchinson, Kansas, 1935
 Williamson, Elvira, Hutchinson, Kansas, 1930
 Willms, Margaret, Hutchinson, Kansas, 1910
 Wilson, Betty, Hutchinson, Kansas, 1927
 Wilson, Effie, Hutchinson, Kansas, 1923
 Wilson, Herman, Kinsley, Kansas, 1896
 Wilson, Katie, Kinsley, Kansas, 1895
 Wilson, Louise, Hutchinson, Kansas, 1914
 Wilson, Marjorie, Hutchinson, Kansas, 1909
 Wingel, Alice, Sterling, Kansas, 1900-1901
 Winter, Elsie, Hutchinson, Kansas, 1919
 Wise, Arthur, Hutchinson, Kansas, 1931
 Wood, Opal, Hutchinson, Kansas, 1902
 Woodell, Fay, Hutchinson, Kansas, 1911
 Woodell, Marguerite, Hutchinson, Kansas, 1911
 Woods, Dorothy, Hutchinson, Kansas, 1919
 Wray, Richard, Hutchinson, Kansas, 1916
 Wyman, Erskine, Hutchinson, Kansas, 1908
 Yerkes, Clara, Hutchinson, Kansas, 1907
 Yerkes, Hazel, Hutchinson, Kansas, 1908
 Yetter, Lulu, Hutchinson, Kansas, 1904
 Yoder, Blanche, Hutchinson, Kansas, 1905
 Yoder, Frances, Hutchinson, Kansas, 1910
 Yoder, Howard, Hutchinson, Kansas, 1914
 Yost, Floyd, Hutchinson, Kansas, 1914
 Young, Caroline, Hutchinson, Kansas, 1915
 Young, Rachel, Hutchinson, Kansas, 1929
 Zimmet, May, Kinsley, Kansas, 1897
 Zinn, Thurman, Hutchinson, Kansas, 1917

Ledger donated to RCGS by member Darren McManis and typed by Kathleen Dankanyin.

Henry Rudesill

Henry M. Rudesill, 80, Hutchinson's oldest music teacher in service and years, died in Grace hospital at 3:40 pm, Thursday after two month's illness. He may have been the oldest music teacher in Kansas.

Mr. Rudesill was born in Ashland, Ohio May 8, 1873, had lived and taught in Hutchinson 63 years. Mr. Rudesill, graduate of Oberlin College and University of Kansas, taught harp and piano. He also was a composer. Mr. Rudesill probably taught 2500 pupils in music. Up to 1946 he had listed 2000 students.

Among those students were men and women who have gone far in music. There is Bob Pace, son of Mr. and Mrs. Walter R. Pace, Hutchinson. Bob Pace is an instructor and concert artist working out of New York. He appeared here about two years ago.

There is Harpo Marx, movie actor. He was appearing at the old Riverside park theatre when he took lessons from Mr. Rudesill. Other students included Madaleine Heryer, pianist and composer; Betty Jane Steele, pianist; Martha Mayfield, harpist at one time with the Cleveland symphony orchestra.

Mr. Rudesill was a skilled artist. The walls of his home at 207 West 9th are lined with pictures, including many of his own, many early century works of artists. Mr. Rudesill at one time was on a chautauqa circuit for two or three seasons, playing harp and piano.

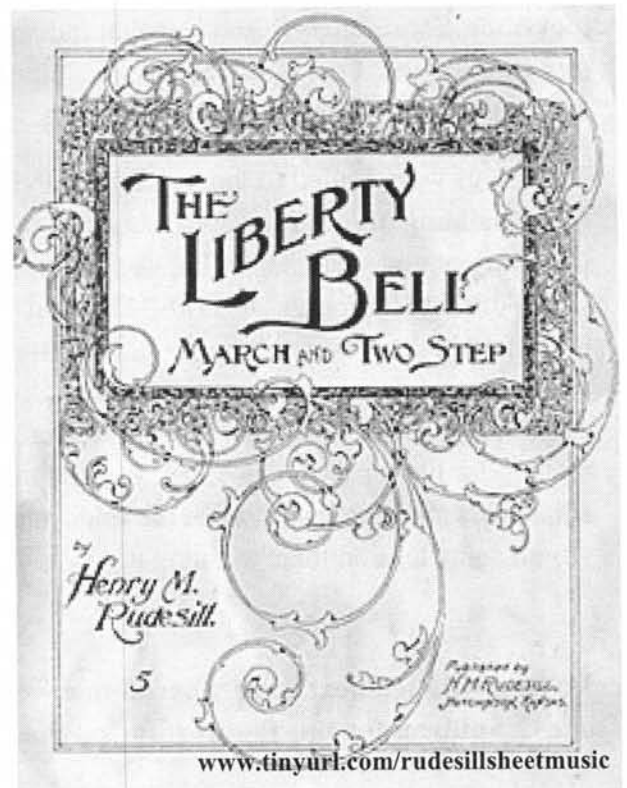
He is survived by his sister, Mrs. J. E. Conklin, 210 East 6th. Funeral will be at 3 pm Saturday in Johnson and Sons chapel with burial in Eastside cemetery, Rev M. J. Duncan officiating. The family suggests a living memorial for the music room of the library in which Mr. Rudesill had shown so much interest.

Hutchinson News Herald 11/13/1953 P 6



Mr. Henry M. Rudesill,
 TEACHER OF
**Piano, Organ, Guitar, Harmony,
 Drawing and Painting.**
 Residence 210 8th Avenue West.
 Word can be left at China Hall, 204 N. Main

Hutchinson Daily News 3/30/1897



www.tinyurl.com/rudesillsheetmusic

The O'Sullivan Family

As shared in the article on page 44, Joe O'Sullivan shared information on the O'Sullivan family during my research on the creation of St. Teresa Cemetery. We will share excerpts of "*Memories by the Reverend Timothy J. O'Sullivan.*" [1955] and the history recorded by Mortimer O'Sullivan in several issues.

"Memories by the Reverend Timothy J. O'Sullivan"



I was born on a homestead, seven miles east of Hutchinson, Kansas, one mile from a flag station and Post Office located on the Santa Fe railroad named Kent, Kansas. My parents were married in Hutchinson at St. Teresa's Church, by the pastor of St. Mary's Church, Newton, Kansas. There were eight children, five sons and three daughters of Mort O'Sullivan and Theresa Decker O'Sullivan.

I have a faint recollection of my father telling us long after, that their wedding carriage was a wagon, and that on the way to the farm home, the team ran away with them, but fortunately no harm was done. The home had just been completed prior to the wedding; one room was constructed of cottonwood logs. It had been built in the mid-seventies. Prior to that, the homesteader had lived in a sod house which was one-half "dug-out." This was the home from the spring of 1872 when he filed for the homestead, until the log house was constructed.

Logs for the house had been cut in the sand hills northeast of Hutchinson. There was no timber in the Arkansas river valley because the country had been burned over so often by the Indians that no trees could survive. The homesteader could look in all directions from his sod home, and not one single tree could be seen in any direction.

One day, Father and a friend, Pete Brady, were chopping down trees in a secluded valley in the hills. Father looked up from his work, and saw that Indians seated on their ponies, had surrounded them on the hills. He told Pete to look. Pete said "Don't look at them. Keep on working." In a short time, the Indians were gone on their way, as mysteriously as they had come.

These logs were hauled to the homestead and the one room house was built. Before the wedding, a two-story frame building of four rooms was attached to the log house on the south side. That was the home to which our father brought his bride. That was the home in which we were all born - born without the services of a medical man, with only the assistance of a kind neighbor woman to minister to our mother during our births. In 1955, the old home still stands about as it was when the bride and groom came to it on their wedding day.



The home in which eight O'Sullivans were born.
Built in the late 1870's by our Father.

To be continued next issue. Special thanks to Joe O'Sullivan for this family information.

History Recorded by Mortimer O'Sullivan

Shared by Joe O'Sullivan, Great Grandson of Mortimer. Typed by RCGS member, Melody Morgan

The interesting papers recently published in the Ave Maria from the gifted and learned writer Rev. R. O'Kennedy on the life and times of Sir Stephen De Vere, in which he graphically describes the home life, simple religious faith, mis-treatment and suffering of the Irish-peasantry, both before and during the great famines in Ireland, recalls to my mind some reminiscences of that period which may be not uninteresting to Ave Maria readers of the present day.

I was but four years old at the time of the famine of '48, and though too young at the time to have a general knowledge of the conditions which existed, I have distant recollections of occurrences in connection with our own family which impressed me at the time, and which are still vivid in my memory after the lapse of sixty-one years, as if they had happened but yesterday.

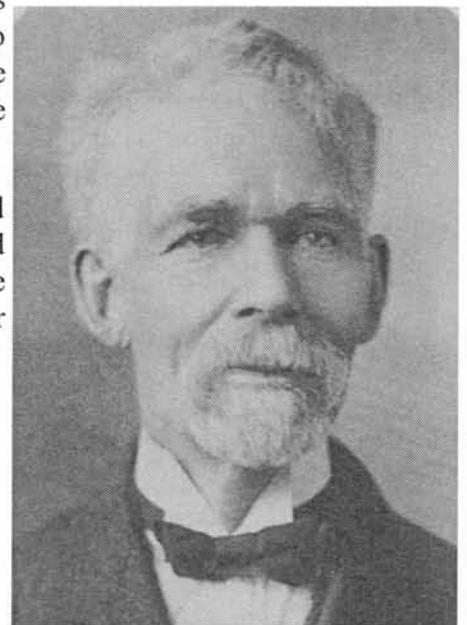
At that time our family, consisting of Father, Mother, and five sons aged respectively, two, four, six, eight and ten years, were living in the County of Cork, in that section of the country lying South-west of Bantry. Whatever property my Father and Mother possessed when they were married, and I know they had some from what my mother told me, had been lost through misfortunes that had visited them in intervals, and at the time of which I write their dependence for subsistence was confined almost exclusively to the potato crop, together with fish caught in the Springtime which, when salted and dried, were bartered in Bantry for household supplies.

When the potato crop failed famine and pestilence crept from their hiding places, spreading suffering, terror and death through the community in which we lived, most of which was circumstanced no better than we were. Sea weeds and barnacles gathered from the rocks when the tide was out were eaten as food to sustain life which seems dear even in misery, and more especially so to a religious people such as they were, who had implicit faith in Divine Providence; were submissive to its decrees, and who regarded sin as a greater evil than bodily suffering, which must soon terminate either in death or in improvement of circumstances.

This diet soon brought fever and dysentery into most families, which in most cases resulted in death.

One of my mothers brothers, who had been crippled in youth, lived in the vicinity, and though not among the destitute himself, had a large family of his own to provide for, which taxes his resources to the utmost, leaving him little or no means with which to help our family. This brother was an educated man, well versed in the English and Gaelic languages and literature. He wrote the Irish language in characters that resembled print, and also wrote a fine English hand.

In view of these acts it is not amazing that this poor, ignorant and despised Catholic peasantry who suffered so much and so long for their faith, had parted with everything the world esteems to keep it were destined by the Almighty God to spread the light of the True Faith in new worlds, as their Ancestors of old did in many benighted nations of Europe.



Mortimer O'Sullivan 1909

To be continued next issue.

Special thanks to Joe O'Sullivan for this family information.

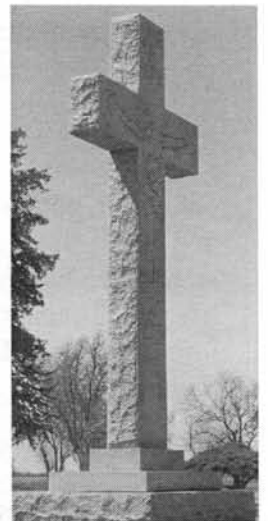
St. Teresa Cemetery

Recorded in the book "St. Teresa Church, Mother Church of Reno County, 1872-1997", is the creation of the St. Teresa Cemetery. It states:

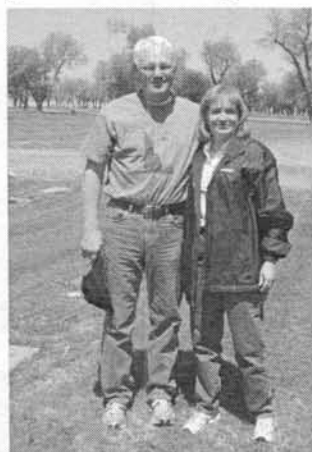


"St. Teresa Cemetery has existed for 68 years. By a contract dated June 16, 1930, Cemeteries of America, Inc. contracted to sell ten acres of Memorial Park Cemetery* to the Diocese of Wichita. This acreage was to be set apart as the Roman Catholic cemetery known as St. Teresa Cemetery. Shortly thereafter, Ft. T. J. O'Sullivan, on behalf of the O'Sullivan family donated to the diocese a statue of the Sacred Heart to be installed in the cemetery. This statue was removed from the former family plot at Eastside Cemetery, Hutchinson, to the present location. Fr. O'Sullivan also moved his parents, Mortimer and Teresa O'Sullivan, and his five-year old brother, Francis, from their plots in Eastside Cemetery to their present location. Fr. O'Sullivan is buried in the cemetery, as are almost a dozen subsequent members of the O'Sullivan family. Erected in 1967, a granite crucifix in the center of the cemetery denotes a special section reserved by the diocese for priest and sisters of the diocese."

*Memorial Park is now known as Penwell-Gabel Cemetery & Mausoleum. I called the cemetery and was told they care for and maintain the St. Teresa cemetery, which is located in the south section of the grounds. RCGS will list St. Teresa as its 55th cemetery in Reno County so anyone looking for it can easily find it. I have seen obituaries that only list St. Teresa as the place of burial with no reference to it being located on the grounds of Memorial Park.



This also caused Kathleen and I to take a look at the Eastside records for the time-frame Mortimer and his wife and son were disinterred and the statue moved. Well, no record is on file at Eastside of the disinterment and these O'Sullivans are not listed in the burial list provided to us by Penwell-Gabel a few years ago. Hmmm. Kathleen and I visited both Eastside and Penwell-Gabel to see what we could find and located their headstones at Penwell-Gabel, next to their son Fr. T. J. O'Sullivan. Kathleen also found some interesting newspaper articles on Mortimer and the O'Sullivans that we thought would make a good article for the quarterly and hoped we could locate a photo of Mortimer to go with it. During our visit at Penwell-Gabel we were taking photos of the graves we located when a man mowing a small area asked if we found the persons we were looking for, to which we responded yes. He pointed to some graves and asked if that was them and again we said yes. Those were his parents and he is the



great grandson of Mortier O'Sullivan. He turned out to be Joe O'Sullivan, that Kathleen had noted earlier, was in the phone book and planned to call to seek family information. Now that is a serendipity moment in the cemetery! A week later we met with him and obtained additional information on the family and the history recorded by Mortimer. You never know what discoveries will be made when you start a research project. Ones like this affirm what we do.

Left: Joe O'Sullivan & Gale Wall



Right: Joe O'Sullivan & Kathleen Dankanyin

The Tragic Death of Laura Fife

Last year I stumbled across the newspaper article of Laura's death while looking for something else. It saddened me that I couldn't locate much information on her or her family. I submitted her as a candidate for the 3rd annual **Talking Tombstones** fundraiser of the Hutchinson Theatre Guild, held in the Eastside Cemetery. Her story was portrayed by Jade Blakely, pictured below. I didn't want her to be forgotten again, so it is here that I record the story of her tragic death. Laura is buried in an unmarked grave at Eastside Cemetery.



"Miss Laura Fife, a colored girl, 20 years old, daughter of John Fife, of Ninth avenue east, was killed by a fall from a car on the roller coaster at Riverside park last night. The accident happened at about 10 o'clock in the evening, when the people were leaving the park in crowds. The young woman was taken in an ambulance to a hospital at once but died shortly after reaching there. Dr. L. A. Forney was at the park at the time of the accident and Dr. J. L. Foltz was also called immediately, and both helped. The immediate cause of the death was a fracture of the front part of the skull, caused by striking one of the supporting braces of the structure.

The accident happened when at the lowest place of the entire structure, which is on the west side and at the bottom of the big "dip" which causes the thrill in the ride around the coaster. In the car with Miss Fife was Mrs. Mattie Johnson and Carrie Wright, also colored women. There are three seats in the car, each large enough for two persons. The women were in the car, one in each seat. The others did not miss her until after the car had gone some distance from the point where she fell out and don't know how it could have occurred, unless she had fainted. And it is impossible to tell just how it did happen. The car and the structure were not broken in any way and came out of it without any defect showing up. The women had ridden over the coaster for the fourth time and were therefore accustomed to a certain extent to the thrill that goes with a ride of this sort. Whether in her desire for added thrills, as passengers often feel, she had tried to accelerate the movement of the car and had fallen out in doing so, will never be known possibly, as no one seems to have seen the accident, the body being found a few moments later by the other occupants of the car as they swung around the circle.

Is an unfortunate accident but one in which the management of the park seems to be in no way to blame. There is no danger, whatever, if a passenger keeps his seat in the car, nor is this hard to do, in a ride over the route taken by the car. The ride is fast and there are short turns and the big "dip" is deep, but there is no danger if the passenger tries to stay in the car and get through with the ride without danger.

Manager Beck says today that he could not understand how Miss Fife could have fallen from the car. She had not fallen on the track but to one side and clear of the track, a car following not touching her body as it sped along." *Hutchinson News 7/31/1911*

Sadly, this wasn't the only tragedy to strike Laura. In 1908 a warrant was issued against a man for raping Laura. I could not find any more details on the outcome.



Pub. by The Rorabaugh-Wiley Dry Goods Co., Hutchinson, Kans.
BIRDSEYE VIEW RIVERSIDE PARK ROLLER COASTER.

Alumni of Hutchinson High School

From the 1920 issue of the Allagaroo, CONT'D

Class of 1901

Carey, Maude, Hutchinson, - Mrs. J. J. Brownlee
 Fair, Opal, Hoisington – Mrs. T. Keegan
 Gabrielson, Esther, Kansas City
 Handy, Jessie, Seattle, Wash. – Mrs. Bruce Gray
 Welsh, Maude, Oklahoma
 Stewart, Frances J., Hutchinson
 Leidegh, Lucy E., Hutchinson – Mrs. Clyde Eddie
 Lucas, Louise, Chicago, Ill. – Mrs. Peter Donegan
 Wilson, Stella, Los Angeles, Calif.
 Gabrielson, Mary
 Minor, Helen, Hutchinson – Mrs. Walter Grundy
 Graves, Elizabeth, Hutchinson – Mrs. Dana Campbell
 Duval, Clara, New York City
 Adams, Claude C., Latrobi, Pa.
 Scheble, Alfred R., Hutchinson
 Kerns, Edgar, O., Kansas City, Mo.
 Briggs, Grace, Hutchinson
 Armstrong, Harriet, Hutchinson
 Hardcastle, Joseph H., Hutchinson
 Campbell, Anna, Hutchinson
 Perkins, Frank. Deceased
 Calvert, Merrill W.
 Lovelace, J. Sidney, Hutchinson
 Edmunds, Edward G.

Class of 1902

Arthurs, Belle, Pittsburg, Pa.
 Calvert, Ellstow
 Cain, Quintilla, Detroit, Mich. – Mrs. Clarence Yetter
 Buser, Myrtle, Hutchinson – Mrs. James Rowland

Horner, Georgiana, Hutchinson – Mrs. Lamotte Beebe
 Kiles, Lester, Kansas City, Mo.
 Edmunds, John, Liberal
 Magers, Roma, Hutchinson – Mrs. A. E. Noonan
 Schroll, Arthur, Hutchinson
 Warren, Luella, Hutchinson
 Iivan, John, San Francisco, Calif. (Irvan?)
 Lawson, Elizabeth, Topeka, Kansas – Mrs. Ira Bright
 Holoway, Josephine, Hutchinson – Mrs. J. W. Harrison
 Mellinger, Mary, Hutchinson
 King, Albert
 Lee, Cora, Phoenix, Ariz. – Mrs. Charles Sterling
 Morse, Lucretia
 Stevens, Otto, Hutchinson
 West, Blanche, Cottonwood Falls, Kans.

Class of 1903

Irvan, Catherine, San Francisco, Calif.
 Vance, Robert, Hutchinson
 Padfield, Elmer, Coats
 Schlaudt, Linda, Hutchinson – Mrs. Herman Bliss
 Buser, Lee, Alabama
 Haines, Florence, Stafford – Mrs. Dale
 Childs, Goldie
 Lee, Ben, Hutchinson
 Butters, Gela, Oklahoma – Mrs. Clifford Buskirk
 Jones, Walter, Hutchinson
 Morgan, Clifford
 Anderson, Marjorie, Washington, D. C.
 Johnson, Neill, Chicago

Class of 1904

Baxter, Elizabeth, Hutchinson
 McCandless, Margaret, Hutchinson – Mrs. Otto DeVoss

Stallman, Lula, Hutchinson
 Shelley, Eugene
 Young, Cordelia, Hutchinson – Mrs. R. Y. Jones
 Jones, Charlie, Haven
 Brown, Robert, Hutchinson
 Prigg, Lucille, Miles City, Mont. – Mrs. A. C Fichorn

Class of 1905

Benedict, Winifred. Deceased
 Bush, Grace – Deceased
 Caskey, Ethel, Hutchinson
 Corey, Abigial, Hutchinson – Mrs. Wm. Symms
 Downs, Randolph
 Livengood, Fay, Kansas City, Mo.
 Yetter, Lulu, Winfield – Mrs. Gordon Railey
 Webb, John
 Chesbro, Claude
 St. John, Esther, Hutchinson – Mrs. L. H. Hughes
 Stewart, Anna, New York (married)
 Wilson, Roxy, Los Angeles, Calif.
 Wood, Rhuy, Elmdale
 Wright, Clifton, Hutchinson – Mrs. A. C. Blinn
 Prentice, Clara, Hutchinson
 Justice, Mabel
 Hardcastle, Agnes, Hutchinson – Mrs. Shipman
 Saunders, Lelia, Hutchinson
 Beard, Harold, Berkeley, Calif.
 Ross, Grace, Arlington – Mrs. Ralph Crabbs

Class of 1906

Hipple, Eugene, Hutchinson. Deceased
 Rees, Ora, Hutchinson
 Buser, Bertha, Concordia – Mrs. Robert Ellis
 Davis, Grace, Hutchinson

Buskirk, Meda, Newton – Mrs. Fred Newton
 Botkin, Nell, Hutchinson – Mrs. Ray Ghormley
 Kendall, Lydia, Hutchinson – Mrs. H. M. Stewart
 Livshis, Anna, Chicago (married)
 Routledge, Goldie, Kansas City – Mrs. Clyde Stevens
 Bradbridge, Lucile, Omaha, Neb. – Mrs. Gladwyn Davis
 Holloway, Eva. Deceased
 Hartman, Leonaro, Dillwyn – Mrs. Arthur Smith
 Saylor, Roy, Hutchinson
 Burtch, Wendell, Nebraska
 Padfield, Earl, Wichita
 Ramsey, Herbery, Hutchinson
 Maloney, Sarah, Hutchinson
 Blair, Laura, Turon (married)
 Campbell, Coral
 LeClerc, Walter
 Gabrielson, Ray, Hutchinson
 Kiles, Edward, Hutchinson

Class of 1907

Hamner, Leonard, Salina
 Jordan, Nina, Chicago, Ill.
 Ballard, Florence, Denver, Colo. – Mrs. Anthony
 Hall, Ross, Hutchinson
 Freese, Eunice, New Mexico
 Beaver, Howard
 Smith, Margaret, Chicago, Ill. – Mrs. William Lester
 Kellam, Hobart, South Dakota
 Rice, Ray
 Walker, Hermie, Pierceville, Kansas
 Parker, Augusta, Hutchinson
 Minor, Harold, Portland, Ore.
 Shelley, Lillian, Phoenix, Ariz.

Hutchinson High Alumni , continued

Rubin, Estelle, Los Angeles, Calif.

Mullin, Kittie, Hutchinson

Hellawell, Helen, Hutchinson

Caskey, Nellie, Hutchinson

Allen, Monica, Hutchinson

Bacon, Stewart, Hutchinson

Dawson, Roscoe, Hutchinson

Van Zant, Russell, Hutchinson

O'Neal, Ned, Wichita

Hartman, Minor, South Dakota

Smith, Carrol, Hutchinson

Martin, Van, Hutchinson. Deceased

Harper, Carol, Ellsworth, Kansas. Deceased

Hill, Bess, South Dakota – Mrs. Hobart Kellam

Schlaudt, Emma, Haven – Mrs. Charles Jones

Class of 1908

Boehm, Walter, Hutchinson

Barrett, Roe M., California

Knorr, William Fay, Cordoba, Argentina, S. A.

Chinn, Avis E., Hutchinson

Ghormley, Ray, Hutchinson

Payne, Clifford J., Hutchinson. Deceased

Baker, Helen, Hutchinson

Talmadge, Myrtle L., Lyons, Kans. – Mrs. Dale Ebright

Cain, Anna, Hutchinson – Mrs. Lemmon

Foley, Anna Gertrude

Livengood, Clara W., Kansas City

Livengood, Pearl, Kansas City

Stead, Marie G., Chicago, Ill.

Gustafson, Carrie, Hutchinson – Mrs. J. U. Hausam

Parks, Velma, Hutchinson – Mrs. William Yerkes

Harcastle, Jean – Hutchinson – Mrs. Harry Young

Pills, M. Edith, Hutchinson – Mrs. Emmet Smith

Smith Susie, Manhattan, Kans. – Mrs. O. E. Hunter

Young, Bruce, Hutchinson

Weathers, Zaza F., Hutchinson – Mrs. Clark Shaw

White, Mae Beatrice, Hutchinson

Brehm, Robert, Hutchinson

McKee, Ruby Blanche, Hutchinson

Phillips, Hannah Margaret, Hutchinson

Wallstrom, Mabel E., Ulysses, Kansas – Mrs. J. Robert Lyle

Class of 1909

Asher, Lucile, Wichita, Kans. – Mrs. E. A. Dickerson

Beach, Earl, Hutchinson

Borger, Ruth, Arizona (married)

Carey, Howard, Hutchinson

Chinn, Erma, Hutchinson

DeVoss, Myrland, Hutchinson – Mrs. Roy Campbell

Downie, Frank, Hutchinson

Fall, Norman, Gilda Springs, Kans.

Fleming, Iona, Kingman, Kans. – Mrs. Nossaman. Deceased

Fitzpatrick, Maude, Garden City, Kans.

Graybell, Marguerite, Hutchinson – Mrs. Van Martin

Hartford, May, Hutchinson

Holloway, Webster, Kansas City, Kans.

Johnson, Theodore, Hutchinson

Kent, Joy, Boston, Mass.

Leidigh, James, McAllister, Okla.

Maude, Edith, Mitchell, Neb. – Mrs. Roy Jorstad

Mayfield, Lionel, Hutchinson

Nichols, Pearl, Hutchinson – Mrs. A. E. Atkinson

Payne, John, Winfield

Reeves, Lewis, Sawyer, Kans.

Robinson, Charlotte, Haddan, Kans. – Mrs. William Jones

Rubin, Myer, Los Angeles, Calif.
 Rutledge, Roy, Marion, Kans.
 Rowan, Grace, Wichita – Mrs. D. Leighton
 Schuir, Besie, Lewis, Kans. – Mrs. Leverette Davis
 Smith, Chester, Kansas City, Mo.
 Soper, Roy, Hutchinson
 Soper, Susie, Hutchinson
 Sponsler, Cora, Hutchinson
 Stewart, Adair, Springfield, Ill.
 Suttle, Clyde, Hutchinson
 Swift, Allender, Kansas City, Mo.
 Tedrick, Chester, Hutchinson
 Teed, Albert, Hutchinson
 Thoma, Gus, Hutchinson
 Updegraff, Florence, Hutchinson – Mrs. Lacy Rosier
 Walker, Guy, Hutchinson
 White, Wilma, Emporia, Kans.
 Williams, Paul, Hutchinson
 Young, Glenn, Herrington, Kans.

Class of 1910

Astle, Byron, Hutchinson
 Bacon, Mary L., Hutchinson
 Benson, Bertha, Hutchinson
 Blanpied, Blanche, Hutchinson – Mrs. Fred Camp
 Corey, Zenita, Hutchinson
 Eby, Eva, Hutchinson
 Fairchild, Sam, Hutchinson
 Farley, James, Hutchinson
 Gabrielson, Roy, Outlook, Saskatoon, Canada
 Galloway, Arthur, Hutchinson
 Gardner, Maud, Hutchinson
 George, Mary, Los Angeles, Calif.
 Grey, Paul Bruce, Cambridge, Mass.

Grimes, Sarah, Hutchinson – Mrs. Glover Colloday
 Hood, Robert
 Jones, Estelle, Ellinwood, Kans.
 Jones, Herbert, Great Falls, Mont.
 Rutledge, Grace, Marion, Kans.
 Kirkman, Leah, Los Angeles, Calif. – Mrs. James Shelton
 Lamborn, Benjamin, Hutchinson
 McDonald, Flossoe, Hutchinson – Mrs. Clarence Fearl
 Mills, Charles, Louisville, Tenn.
 Niver, Ethel, Medford, Minn. – Mrs. Vaid Worstell
 Ewitz, Leila, Milam, Ill. – Mrs. Ben Curtis
 Rutledge, Chester, Hutchinson
 Shawhan (Snawhan?), Gertrude, Los Angeles, Calif. – Mrs. Ira Guldner
 Shelley, Grace, Kansas City, Mo. – Mrs. Allender Swift
 Soper, Fred, Hutchinson
 Stevens, Lucile, Hutchinson
 Sweetser, Mary, Colorado Springs, Colo.
 Talmadge, Louise, Hutchinson – Mrs. A. L. Maltby
 Van Dolah, Justine, Gulfport, Miss.
 Watson, Stuart, La Platter, Maryland
 Veatche, Chauncy, Hutchinson
 Townshend, Berniece, Hutchinson – Mrs. Lionel Mayfield

Class of 1911

Asher, Mildred, Wichita – Mrs. Ray Tinder
 Armstrong, Guy, Hutchinson
 Brown, Ethel, Lamar, Colo. – Mrs. Eugene Duvall
 Baer, Victor, Italy
 Brownell, Ina
 Bradbridge, Ernest, Camp Funston
 Caskey, Theresa, Hutchinson
 Cowan, Esda, Hutchinson
 Caplinger, Robert, Hutchinson

Hutchinson High Alumni , continued

Davis, Bulah, Hutchinson
 Duvall, Eugene, Lamar, Colo.
 Diveley, Rex, Green Mountain Falls, Colo.
 English, Harold, Hutchinson
 Freese, Vada, Dawson, N. Y.
 Graves, Leona, Inman
 Hickman, Mildred (married)
 Hubbard, Fern, Hutchinson (married)
 Jordan, Mabel
 Knode, Edna, Wichita
 Haines, Fred, Hutchinson
 Lamont, Maud, Hutchinson – Mrs. N. N. Kline
 Leonard, Mary, Hutchinson – Mrs. Arthur Schroll?
 Lyon, Sam, Holden, Mo.
 McKinstry, Dorothy, New York City
 Newman, Winifred, Hutchinson – Mrs. Will Shears
 Neal, Verna, Hutchinson
 Parks, Erma, Hutchinson – Mrs. J. A. Hildyard
 Price, Lois, Hutchinson – Mrs. Arthur Schroll?
 Pratz, Margaretta, El Paso, Texas
 Ryker, Cornelia, Hutchinson – Mrs. Fred Atwood
 Rishel, Glen, Hutchinson. Deceased
 Reeves, Jay D., Sawyer
 Schurr, Evelyn. Deceased
 Stewart, Esther, Los Angeles, Calif.
 Stewart Lois, Los Angeles, Calif.
 Walters, Charles
 Carey, Charles, Hutchinson
 Gilkinson, Arthur, Hutchinson

Class of 1912

Akin, John, Tulsa, Okla.
 Allumbaugh, Bertha, Spivey, Okla. – Mrs. Ross Carrick
 Atkinson, Edith, Little River – Mrs. Frank Fry
 Benschmidt, Elsie, Hutchinson also listed in class of 1913
 Blaine, Fairy, Meade, Kans. – Mrs. Wendell Presby
 Blair, Ruth, Hutchinson
 Booth, Myron, Hutchinson
 Burnett, William, Topeka
 Campbell, Blanche, Greensburg – Mrs. Johnson
 Cook, Pauline, California – Mrs. Myron Booth
 Davis, Foreman, Hutchinson
 Dagin, Dorothy, Phoenix, Ariz.
 English, Harriet, Los Angeles, Calif.
 Faris, Mildred, Junction City, Kansas – Mrs. Harold Bock
 Galloway, Frank, Hutchinson
 Gleadall, Joe, Hutchinson
 Green, Martha, Hutchinson
 Haines, Mary, Hutchinson
 Hall, Emily, Hutchinson – Mrs. Roger Conant
 Hansen, Geneva, Hutchinson
 Harrison, Estella, Hutchinson
 Hettinger, Ruth, Hutchinson
 Johnson, Inez, Hutchinson
 Kellam, Lee, Pratt
 Klinck, Frances, Anthony
 Lamont, Cecil, Hutchinson – Mrs. L. B. Stratton
 Lyon, Clara, Ellinwood – Mrs. Elton Giles
 Martin, Herbert, Hutchinson
 Martin, John, Hutchinson
 Mathias, Madena, Hutchinson – Mrs. Dee Witt Peachy
 Milan, Grace, Hutchinson

Class of 1913

Armstrong, Beulah, Hutchinson	Kreigh, Hobart, Lawrence
Atkinson, Alta, Hutchinson – Mrs. Harry Budke	Kreigh, Percival, Lawrence
Bacon, Robert, Hutchinson	Leighty, Sabina, Hutchinson
Benscheidt, Elsie, Hutchinson also listed in class of 1912	Lord, Nina, Dighton, Kansas
Branine, Hazel, Hutchinson	Lyon, Clara, Ellinwood – Mrs. Irvin Page
Caskey, Stella, Hutchinson	McElvain, Margaret, Hutchinson
Cecil, Myrtle, Hutchinson – Mrs. Harrison Kincaid	Manda, Harry, Hutchinson
Crawford, Beryl, Hutchinson	Martin, Elinor, Hutchinson – Mrs. Morgan
Dressler, Anna, Hutchinson	Miller, Blossom, Hutchinson
Duvall, Alice, Hutchinson	Mitchell, Ona, Hutchinson
Faris, Mildred, Emporia, Kans. – Mrs. Clarence Pterson	Muller, Alice, Hutchinson
Fisher, Mabel, Hutchinson	Nelson, Nellie, Hutchinson
Friesen, Ernest, Hutchinson	Nelson, James, Hutchinson
Frost, Arl, Hutchinson	Pattenson, Ralph, Lawrence
Gabrielson, Lawrence, Hutchinson	Payne, Lloyd, Hutchinson
Galloway, Mae, Hutchinson	Pegues, Henry, Kansas City, Mo.
Giles, Elton, Hutchinson	Porter, Olive, Hutchinson
Gissel, Emma, Hutchinson – Mrs. Maurie Hartman	Pine, Phoebe, Hutchinson
Graber, Carl, Hutchinson	Rayle, Nellie, Hutchinson
Green, Martha, Hutchinson	Reed, Genevive, Lyons
Hall, Richard, Hutchinson	Ridgeway, Eunice, Gueda Springs, Kans. – Mrs. Norman Fall
Harrison, William, Hutchinson	Sargent, Theodore, Marshall, Texas
Hindman, Olind, Hutchinson	Shuart, Theodore, Hutchinson
Hodkes, Alma, Norman, Okla.	Simmons, Stuart, Hutchinson
Holloway, Sarah, South Hutchinson	Snyder, Helen, Hutchinson
Houghton, Miriam, Hutchinson	Stewart, Leonard, Hutchinson
Howard, Anna, Manhattan, Kans.	
Howard, Louis, Manhattan, Kans.	
Hughes, William, Hutchinson	
Irving, Neva, Rush Center, Kans.	To be completed in the August 2010 issue.
Keys, Myrtle, Hutchinson (married)	
Kiles, Eva, Hutchinson – Mrs. Grandon Brand	Thanks to Sally Eubanks for typing this data.
Kruk, Joyce, Hutchinson	

RCGS Membership - as of 5/17/2010

Alford, LaDonna, Daisetta, TX
 Algrim, Gene, Hutchinson, KS
 Allen Co Public Library, Ft. Wayne, IN
 Ashens, Hazel J., Hutchinson, KS
 Bach, Cynthia, Jetmore, KS
 Baker, Brenda, Woodland Park, CO
 Balzer, Harold, Buhler, KS
 Basgall, Shirley, Hutchinson, KS
 Bowman, Robert & Barbara, Hutchinson, KS
 Bredfeldt, Connie, Hutchinson, KS
 Brown, Cordelia, Lawrence, KS
 Brown, Debby, Parkville, MO
 Burgess, Dudley & Karen, Hutchinson, KS
 Burgess, Keith & Martha Jane, Hutchinson, KS
 Cavanaugh, Daniel & Pam, Mondovi, WI
 Childs, Margaret, Hutchinson, KS
 Clark, Diana, Kansas City, MO
 Cole, Meredith & Donna, Hutchinson, KS
 Conklin, Mary A., Hutchinson, KS
 Cook, Weldon A. & R. Jolene, South Hutchinson, KS
 Dankanyin, John & Kathleen, Hutchinson, KS
 DAR Library-Mem.Cont. Hall, Washington, D.C.
 Dean, Jerry & Barbara, West Hills, CA
 Drews, W.R., Hutchinson, KS
 Eubanks, Sally, Hutchinson, KS
 Filbert, Edward & Ruth, Hutchinson, KS
 Floren, Kathy, Lakewood, CA
 Gen. Soc. of Utah, Salt Lake City, UT
 Ghere, Judy, Hutchinson, KS
 Gobin, Dwayne & Vivian, Hutchinson, KS
 Goheen, Esther, Hutchinson, KS
 Gonzalez, Angela, Maiden, NC
 Greathouse, June, Hutchinson, KS
 Griggs, Kendall & Sylvia, Hutchinson, KS
 Hand, Oliver, Ellicott City, MD
 Hatton, Rebecca Sue, Hutchinson, KS
 Head, Rebecca, Nickerson, KS
 Heffernan, Edward D., Benicia, CA
 Hermstein, Margaret, Newton, KS
 Hughes, Peggy, Hutchinson, KS
 Janney, Dr. James Jr., Chesterfield, MO
 Janney, Rosemary, Dallas, TX
 Johnston, Marilyn, Hutchinson, KS
 Kincaid, Connie, Hutchinson, KS
 Kleiber, Ms. Irene, Hutchinson, KS
 Kollhoff, Lewis and Barbara, Salina, KS
 Lager, Fred, Hutchinson, KS
 Lendabarker, Raymond & MariAnn, Franklin, WI
 Lestishen, Doris, Hutchinson, KS
 Lewis, Diane, Portland, OR
 Lingg, Rita, Hutchinson, KS
 Long, Phyllis, Washburn, MO

Longhofer, Garland V. & Martha Jo, Hutchinson, KS
 Martin, Robt. J. & Mary R, Yakima, WA
 Martin, Wayland E. & Darlene R., Livermore, CA
 McMannis, Darren J., North Newton, KS
 McMillan, Jerry, Saratoga, CA
 Meadows, Myrel A, Hutchinson, KS
 Midwest Gen. Ctr - Mid Continent, Independence, MO
 Mock, Debbie, Hutchinson, KS
 Moore, Claude & Delores, Hutchinson, KS
 Moore, Jay, Hutchinson, KS
 Moore, Nancy, Willow Creek, CA
 Morgan, Melody, Plano, TX
 Neuway, Keith & Ruth, Mt. Hope, KS
 Nichols, Norma & Nick, South Hutchinson, KS
 O'Brien, Brian & Sherry, Hutchinson, KS
 Pitzer, Phillip, Partridge, KS
 Poulton, Sharon, Hutchinson, KS
 Prigmore, Erma J., Lyons, KS
 Raddon, Charlene, Sandy, UT
 Regier, Judith, Hutchinson, KS
 Reiter, Kay & Lester M., Hutchinson, KS
 Rexroad, Wm. D. "Bill", Hutchinson, KS
 Ritcha, Bill & Janet, Hutchinson, KS
 Sage, Sheila, Hutchinson, KS
 Schuessler, Connie, Topeka, KS
 Schwartz, Ella Mae, Hutchinson, KS
 Scott, Anne, Wichita, KS
 Soukup, Sharon, Hutchinson, KS
 Spence, Melody, Kewanee, IL
 Stansel, Lynn & Pam, Hutchinson, KS
 Stark, Gary & Marsha, Palm Beach Gardens, FL
 Steele, Bob & Betty, Hutchinson, KS
 Stoecklein, Jim & Venita, Hutchinson, KS
 Streeter, Lydia, Hutchinson, KS
 Sublett, Virginia, Hutchinson, KS
 Taggart, Dona, Hutchinson, KS
 Teter, Barbara, Fairborn, OH
 Tucker, Bob & Marcia, Park City, KS
 Vanover, Anne, Tucson, AZ
 Walcek, Janice & Emil, Roswell, GA
 Wall, Barry & Gale, Hutchinson, KS
 Wall, Dorothy, Hutchinson, KS
 Warn, Denton & Marilyn Lake, Hutchinson, KS
 Wedman, Sandra M., Hutchinson, KS
 Whiteman, Lillie, Lyons, KS
 Wilburn, Maureen, Dacula, GA
 Wilke, Margaret, Middleburg Heights, OH
 Wilson, Don, Sarasota, FL
 Winslow, Bob & June, Hutchinson, KS
 Wisconsin Hist. Soc., Madison, WI

This list is used to create our mailing labels.
 Please review and submit any corrections to
renocogensoc@gmail.com.

LINKS

Do you have a suggestion for a web site that we can share with our members?

Send it to: RenoCoGenSoc@gmail.com

RCGS received an email from Marilyn Hudson telling us of two blogs that have Reno County roots:

<http://familyface.blogspot.com/>

<http://plevnaplaces.blogspot.com/>

You can drop by and check out the surnames she has listed.

Forgotten Settlers of Kansas Certificate Program



Descendents of early Kansans are encouraged to submit applications for the following type of certificates:

- **Territorial** - ancestor lived in Kansas prior to 1/29/1861
- **Pioneer** - ancestor lived in Kansas between 1/29/1861 - 12/31/1880
- **Early Settler** - ancestor lived in Kansas between 1/1/1881 - 12/31/1900

Following certification, with permission granted, the application and pedigree chart will be printed in a Forgotten Settlers of Kansas publication. Applications and proof materials are contributed to the manuscript section of the Kansas State Historical Society's Center for Historical Research.

The Kansas Council of Genealogical Societies, Inc. is an umbrella organization for Kansas genealogical and historical societies, as well as interested individuals.

KCGS: <http://skyways.lib.ks.us/genweb/kcgs/>

PUBLICATIONS - NEW PRICES!!!

Births - Recorded Early Births of Reno Co. 1890-1911 & Index	\$5.00
Cemetery Book of Reno County, 1865-1978	SOLD OUT
Cemetery Records of North Inman, Superior Township, McPherson County, KS	\$5.00
Deaths - Recorded Deaths of Reno County 4 volumes, 1890-1911 & Index	\$5.00
Homestead Records of Reno County Name, location & file date 1875-1945	\$10.00
Marriages of Reno County, 1872 - 1913	\$15.00
Naturalization Records of Reno County Index 1875-1955 filed at courthouse	\$8.00
Teachers of Reno County, 1884-1966	\$15.00
<i>The Sunflower</i> Back Issues - CD ONLY 1979 to 2009	\$ 10.00
Harper's Weekly 1888 - City of Hutchinson - featured supplement - PDF on CD	\$5.00
Plat Book of Reno Co. 1902 - PDF on CD	\$10.00
Postage & Handling included in price Kansas residents add 7.05% sales tax Member discount—\$1 each item	

To order a publication - cut and return to:

RCGS - P. O. Box 5
Hutchinson, KS 67504-0005

Name: _____

Address: _____

City: _____

State: _____ Zip: _____

Email: _____

Circle or highlight the items you are ordering

Total amount enclosed: \$ _____

Make checks payable to Reno Co. Gen. Soc.

Members receive \$1 discount on publications



RCGS MEMBERSHIP**Member Benefits**

- Four [4] issues of our quarterly "*The Sunflower*" - Published in Feb., May, Aug., & Nov.
- Free Queries in *The Sunflower* [limit 50 words]
- Monthly eNews – communicating meeting review & reminders, time sensitive data and other informative news.
- 11 monthly programs - both educational and fun
- 1 free hour of research
- Vote in annual election
- Surnames for Reno County ancestors posted on RCGS website
- Surname research profile [outside of Reno County] posted on RCGS website
- Discount on publications [\$1.00 per publication]
- List and link on RCGS website to member website [genealogy related]

Level 1 - \$12 Basic

Level 2 - \$15 Community Connection

Level 2 memberships support our community connection projects, such as, but not limited to: free genealogy workshops, books or microfilm placed in the library, marking an unmarked grave and working with other organizations to promote genealogy.

Membership requests received after August are applied to the following year and a complimentary November quarterly is mailed.

Complete for New, Renewal or Gift Memberships

Name: _____

Address: _____

City: _____

State: _____ Zip: _____

Email: _____

Reno County Surnames: _____

Thank you for supporting RCGS!

RESEARCH CENTERS**RCGS Research Services**

RCGS offers 4 Options - see our website for details

- 1) One record search for 5 names
- 2) *The Sunflower* article copies
- 3) Basic one-hour research service
- 4) Cemetery Photos

Hutchinson Public Library

901 N. Main

Hutchinson, KS 67501

620-663-5441

Mon - Fri 9:00 am to 9:00 pm

Sat 9:00 am to 6:00 pm

Sun 1:00 pm to 5:00 pm

www.hutchpl.org

Hutchinson Family History Center

518 E 43rd Street

Hutchinson, KS 67502

620-665-1187

Tues 1:00 pm to 8:30 pm

Wed 9:30 am to 5:00 pm

Thur 9:30 am to 5:00 pm

Kansas State Historical Society

6425 SW 6th Street

Topeka, KS 66615-1099

785-272-8681

www.kshs.org

Reno Co. Historical Society & Reno Co. Museum

100 S. Walnut

Hutchinson, KS 67501

620-662-1184

Tues to Sat 9:00 am to 5:00 pm

Sun 1:00 pm to 5:00 pm

<http://www.renocountymuseum.org/>



SURNAME INDEX

Not Indexed: TOC,
 Alphabetical list on
 38-40

Adams 46	Chinn 48	Hamner 47	Martin 34 35 48 50 51	Schlaudt 46 48
Akin 50	Clark 32	Handy 46	Marx 41	Schroll 46
Algrim 32	Cline 37	Hansen 50	Mathias 50	Schuir 49
Allen 48	Conard 32 36	Harcastle 48	Maude 48	Schurr 50
Allumbaugh 50	Conklin 41	Hardcastle 46 47	Maxey 34 35	Shawhan (Snawhan?) 49
Anderson 46	Cook 50	Harmon 32	Mayfield 41 48	Shelley 47 49
Armstrong 46 49	Corey 47	Harper 48	McCandless 46	Shuart 51
Armstrong 51	Corey 49	Harrison 50 51	McDonald 49	Simmons 51
Arthurs 46	Cowan 49	Hartford 48	McElvain 51	Smith 47 48 49
Asher 48 49	Crawford 51	Hartman 47 48	McKee 48	Snyder 51
Astle 49	Dagin 50	Hellawell 48	McKinstry 50	Soper 49
Atkinson 50 51	Dankanyin 30 37 44	Heryer 41	Mellinger 46	Sponsler 49
Bacon 48 49 51	Davis 47 50	Hettinger 50	Milan 50	St. John 47
Baer 49	Dawson 48	Hickman 50	Miller 51	Stafford 30
Baker 48	De Vere 43	Hill 48	Mills 49	Stallman 47
Ballard 47	Decker 42	Hindman 51	Minor 46 47	Stead 48
Barrett 48	DeVoss 48	Hipple 47	Mitchell 51	Steele 41
Baxter 46	Diveley 50	Hirst 36	Mock 32	Stevens 46 49
Beach 48	Downie 48	Hodkes 51	Moore 36	Stevens 49
Beard 47	Downs 47	Holloway 47 48 51	Morgan 43 46	Stewart 46 47 49 50 51
Beaver 47	Dressler 51	Holoway 46	Morse 46	Stewart Lois 50
Beck 45	Duncan 41	Hood 49	Muller 51	Suttle 49
Benedict 47	Duval 46 50 51	Horner 46	Mullin 48	Sweetser 49
Benscheidt 50 51	Eby 49	Houghton 51	Neal 50	Swift 49
Benson 49	Edmunds 46	Howard 51	Nelson 51	Talmadge 48 49
Blaine 50	English 50	Hubbard 50	Newman 50	Taylor 51
Blair 47 50	Eubanks 30	Hudson 53	Nichols 48	Tedrick 49
Blanpied 49	Ewitz 49	Hughes 51	Niver 49	Teed 49
Boehm 48	Fair 46	Ivan 46	North 34	Thoma 49
Booth 50	Fairchild 49	Irving 51	O'Neal 48	Townshend 49
Borger 48	Fallis 48	Johnson 41 45 46 48 50	O'Kennedy 43	Updegraff 49
Botkin 47	Faris 50 51	Jordan 47 50	O'Sullivan 42 43 44	Van Dolah 49
Bradbridge 47 49	Farley 49	Justice 47	Pace 41	Van Zant 48
Brady 42	Fife 45	Kellam 47 50	Padfield 46 47	Vance 46
Branine 51	Fisher 51	Kendall 47	Parker 47	Veatche 49
Brehm 48	Fitzpatrick 48	Kent 48	Parks 48 50	Wainer 51
Briggs 46	Fleming 48	Kerns 46	Pattenson 51	Walker 47 49
Brown 47 49	Foley 48	Keys 51	Payne 48 51	Wall 30 36 37 44
Brownell 49	Foltz 45	Kiles 46 47 51	Pegues 51	Wallstrom 48
Burgess 30	Formey 45	Kincaid 32	Perkins 46	Walsh 51
Burnett 50	Freese 47 50	King 46	Phillips 48	Walters 50
Burtch 47	Friesen 51	Kirkman 49	Pills 48	Warren 46
Buser 46 47	Frost 51	Klinck 50	Pine 51	Watson 49
Bush 47	Gabrielson 46 47 49 51	Knode 50	Porter 51	Weathers 48
Buskirk 47	Galloway 49 50 51	Knorr 48	Pratz 50	Webb 47
Butters 46	Gardner 49	Kreigh 51	Prentice 47	Wedman 30
Cain 46 48	George 49	Kruk 51	Price 50	Welsh 46
Caldwell 37	Ghere 32	Lamborn 49	Prigg 47	West 46
Calvert 46	Ghormley 48	Lamont 50	Ramsey 47	White 37 48 49 51
Campbell 46 47 50	Giles 51	Landavazo 32	Rayle 51	Wilburn 32
Caplinger 49	Gilkinson 50	Lawson 46	Reed 51	Wilden 51
Carey 46 47 50	Gissel 51	LeClerc 47	Rees 47	Williams 49
Caskey 47 48 49 51	Gleadall 50	Ledeboer 32	Reeves 48 50	Wilso 32
Cecil 51	Gobin 30	Lee 46	Rexroad 34 35	Wilson 46 47
Chesbro 47	Graber 51	Leidegh 46 48	Rice 47	Wood 47
Childs 46	Graves 46 50	Leighty 51	Ridgeway 51	Wright 45 47
	Graybell 48	Leonard 50	Rishel 50	Yates 51
	Green 50 51	Lestishen 32	Robinson 48	Yetter 47
	Grey 49	Lingg 30 37	Ross 47	Young 47 48 49
	Griggs 30	Livengood 47 48	Routledge 47	
	Grimes 49	Livshis 47	Rowan 49	
	Gustafson 48	Lord 51	Rubin 48 49	
	Haines 46 50	Lovelace 46	Rudesill 38 39 40 41	
	Hall 47 50 51	Lucas 46	Rutledge 49	
		Lyon 50 51	Ryker 50	
		Magers 46	Sage 30	
		Maloney 47	Sargent 51	
		Manda 51	Saunders 47	
			Saylor 47	
			Scheble 46	

Moving? Please notify us of your new mailing address. *The Sunflower* is NOT forwarded.

RENO COUNTY GENEALOGICAL SOCIETY
P. O. BOX 5
HUTCHINSON, KS 67504-0005

RETURN SERVICE REQUESTED



AUTO PRESORTED FIRST-CLASS
670 671 67117 KS-47

PRSR FIRST-CLASS MAIL
US POSTAGE PAID
Wichita, KS
PERMIT 431



4069100603-163813

TEMP-RETURN SERVICE REQUESTED

71

67117

M-53 Dec-09

McMannis, Darren J.

P O Box 387

North Newton, KS 67117-0387

Be sure to visit our blog for events & news : renocogensoc.blogspot.com

Seen at the Museum

You never know what you may find on exhibit at the Reno County Museum. These shoes belonged to Ernie Dale who played Sammy Scarecrow on a local after-school kids show in the 1950's.

Stop by and check out the current exhibits, which include the Mildred Hobbs collection, the largest ever donated to the museum with over 1,700 items.

The bicycle shown was previously on display and I saw it behind the scenes on a recent visit. It was ridden by L. C. Brown of Nickerson, KS. Circa 1885.

RCM - 100 South Walnut & Ave. A

