



# THE SUNFLOWER

**Reno County Genealogical Society**

**P. O. Box 5**

**Hutchinson, Kansas 67504-0005**



**Volume 32, No. 1**

**February 2010**



The Reno County Genealogical Society of Hutchinson, Kansas was founded in 1978 for the purpose of fostering genealogical research, promoting the exchange of information and encouraging the deposit of genealogical and historical materials in established libraries and archives. Membership in the Reno County Genealogical Society is open to anyone interested in genealogy or local history. Dues are Level 1: \$12.00 or Level 2: \$15.00 per year, per couple from January 1 to December 31 each year. Meetings are held the third Monday of each month in the Auditorium of the Hutchinson Public Library, 9th and Main, 7:00 – 8:45 P. M.

## 2010 Board Members

### RCGS Officers

President	VACANT
Vice President *	Karen Burgess
Treasurer	Kendall Griggs
Recording Secretary	Vivian Gobin
Corresponding Secretary	Sheila Sage

[\* Includes Program & Membership Chair]

### RCGS Email:

RenoCoGenSoc@gmail.com

**RCGS Web Site:** 3 ways to find us on the web

<http://rootsweb.com/~ksrcgs>

<http://tinyurl.com/RenoCoGenSoc>

<http://bit.ly/RenoCoGenSoc>

### RCGS Committees

Historian	Rita Lingg
Kansas Room Visitor Book	Sally Eubanks
Obituary Coordinator	Kathleen Dankanyin
Publication Sales	Sandy Wedman
Quarterly & eNews Editor	Gale Wall
Research Chairman	Rita Lingg
Web Coordinator	Gale Wall

**The Sunflower** is published quarterly by the

Reno County Genealogical Society

P. O. Box 5 - Hutchinson, KS 67504-0005

ISSN 1048 - 048X

Editor: Gale Stafford Wall, Hutchinson, KS

The Sunflower is indexed in the Periodical Source Index [PERSI] of the Allen County Public Library Foundation

*The Sunflower* welcomes your articles and photographs on your Reno County ancestors.

Your Reno County ancestor biographies and photos are requested for future issues of *The Sunflower*. You can feature one person or a family unit. Please email Gale Wall with questions at [RenoCoGenSoc@gmail.com](mailto:RenoCoGenSoc@gmail.com).



The Reno County Genealogical Society is a member of the Federation  
of Genealogical Societies and the Kansas Council of Genealogical Societies.

## In This Issue

Editor's Note   New Members   On The Cover	4
News & Notes   RCGS Programs	5
2009 Annual Report & 2010 Changes	6-7
Finding Robert	8-9
Henry M. Rudesill Pupil Ledger	10-15
Photos & Postcards	16-17
Churchyard Literature: A Short Essay on Epitaphs	18-20
Publication Price Changes	21
Alumni of Hutchinson High School, cont'd	22-23
Obituaries: Todd, Bloom, Cross	24
Links   Forgotten Settlers of Kansas   Publications Order Form	25
RCGS Membership   Research Centers	26
Surname Index	27

## Editor's Note



Gale Wall

It's February already. I am behind on my to-do list due to visits with my son and travel. By the time this reaches you we'll be close to spring. I'm ready to get outside more often. We have a lot going on as a society and in genealogy in general. Online databases continue to grow making long-distance research easier than ever. At NewspaperArchive.com our local paper is being added. The library has an in-house subscription to the database. But remember, it's not all online. Another genealogy magazine is ceasing publication. Ancestry. This is the second of the six that were in publication in the United States last year. Everton's Genealogical Helper was the first. Ancestry's decision is far different than Everton's.

I have been asked to consider making the quarterly available in PDF format for those that wish to volunteer receiving it in this manner. This would save the society printing and postage costs and allows the member to receive it before others and in color. I suppose there are some that don't save every issue [gasp!] So, I'm posing this simple survey and hope you'll share your feedback: **Would you be interested in receiving a digital version [only] of our quarterly? Yes or No.** Feel free to add any other comments with your response. Please email to me at [RenoCoGenSoc@gmail.com](mailto:RenoCoGenSoc@gmail.com) with the subject line Digital Quarterly no later than March 10th. Before you share your response please know that the file size will be much larger than the eNews. It will take some extra work on this end, but if a minimum of 25 people subscribe digitally than the board will consider it.

## New Members

Robert & Barbara Bowman, Hutchinson, KS

Kathy Floren, Lakewood, CA

Rosemary Janney, Dallas, TX

Dr. James Janney, Jr., Chesterfield, MO

Anne Scott, Wichita, KS

# WELCOME!

New members - Do we have your email?

Don't miss our monthly eNews!

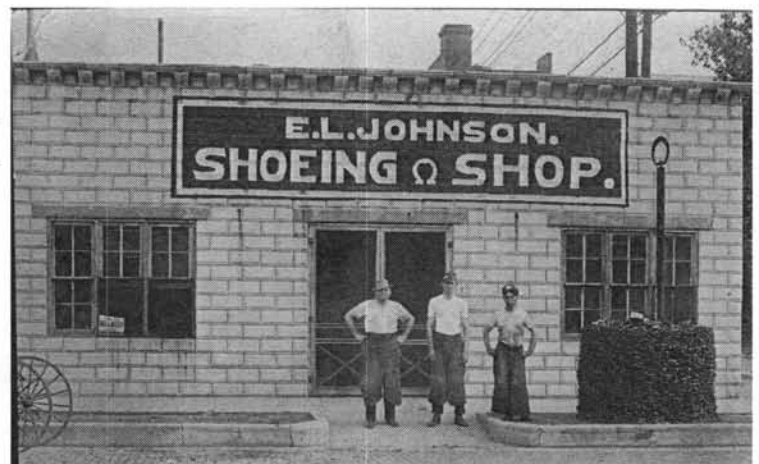
## On The Cover

Photo courtesy of the Reno County Museum.

### Johnson Back at Old Trade

"California is all right for foreigners, negroes, Mexicans, and fellows with plenty of money, but the ordinary fellow has a better chance in Kansas." So says E.L. Johnson, who has recently returned to Hutchinson and opened a horseshoeing shop on South Washington.

*Hutchinson News (Weekly), 2/25/1926*





## News & Notes

- We enter 2010 with no society president. This means extra work for those already serving. Please consider supporting your society and volunteer. There are many ways you can help. Just ask!
- Your Reno County ancestor biographies and photos are requested for future issues of *The Sunflower*. You can feature one person or a family unit.
- Check out the great programs lined up for 2010. We have a wide variety of topics that should be of interest to just about everyone. We hope you will attend!
- Please make sure you are using our current email, which we have had for a while: RenoCoGenSoc@gmail.com
- New in 2010 on our blog - Photo of the Week. Check in each Friday to see the newest photo. If you would like to contribute research articles and links for the blog please email to RenoCoGenSoc@gmail.com

---

## RCGS 2010 Programs

### 1/18 Genealogy Traps

- Traps to avoid in your research

### 2/15 Re-burying A Lost Ancestor

- Hear the journey of locating a lost ancestor

### 3/15 Genealogy Toolbox

- Research toolbox: forms, magazines, newsletters

### 4/19 Tracking Your Roots

- Map Resources

### 5/17 Coming To America

- Immigration Timeline

### 6/21 Cemetery Art & Symbolism

- Beauty found in the cemetery.

### 7/19 Filling in the Blanks

- Missing Census Resources

### 8/16 Family News

- Newspaper Research

### 9/20 Military Heritage

- Record Resources

### 10/18 Annual Potluck

- Delos Smith Ctr
- Bring a covered dish and show & tell item

### 11/15 What's in a Name?

- Nicknames & short names

### 12/13 Board meeting only

**Bring a friend  
and join us!**

## **2009 Annual Report**

### **Treasurer's Report**

Beginning Balance: \$940.20

Ending Balance: \$1,651.42

#### **INCOME**

- Membership:
  - Basic: \$1,104
  - Community Connections: \$192 [extra \$3 paid by 64 members]
- Donations: \$17.10 [unassigned]
- Can money @ meetings: \$13.85
- Research: \$430.35
- Interest on CD: \$132.13
- Raffle: \$275
- Grants: \$490 [includes assigned donations]
- Other income: \$3.36

#### **EXPENSES**

- VP President: \$189.95 [programs and m'ship]
- Treasurer: \$158.53 [fees and dues]
- Quarterly Printing: \$479.58
- Quarterly Postage: \$597.44
- Community Connection Projects: \$168.08
- Kansas State Fair programs: \$151.07
- Kansas State Fair Best of Show: \$25
- Family History Month: \$81.05
- Publicity brochures: \$41.47
- Other: \$49

Total expenses: \$1,946.67

**Membership**

2009 beginning = 109 members

2009 ending = 101 members

**Correspondence**

267 pieces of mail handled

**Historian**

57 items collected

**Research**

59 requests

\$430.35

**Obituary project**

1,080 new obits recorded

**Publications**

Inventory counted for price restructuring

**Quarterly**

Printed: 590

Mailed: 471

Balance used in workshops and new member packets

**Web Site**

Visitors: 5,537

Site searches: 1,181

Blog visits: 586

**2010 Changes**

There are many good things we do that will continue this year. There are also a limited number of people doing them. The board reviewed our past activity and categorized our tasks for the year.

\* = as time allows.

# = as volunteers become available.

**Continue**

Monthly programs

The Sunflower Quarterly

eNews

Blog \*

Research Team

KS Room visitor book

Publicity \*

Community Connection Projects

Web site \*

Obit Index

**Limited**

Cemetery index updates \* #

Publications digitization #

Trading Post

KS Room display case

**Drop**

Raffle

KS Room monthly volunteer

Favorite Ancestor Story

KS State Fair programs

**NO new projects without a chairperson / volunteer!**

## Finding Robert

Tucked away in a box of family photos for Barry's family was a photo of the grave of Robert Shultz. Robert is his great-great Uncle. In March of 1887 the Shultz family left Macoupin County, Illinois headed to Kansas. The timeline of arriving in Reno County is between 1895 and 1900, but they first went to Kearny County. While there Robert died and was buried at the Lakin Cemetery.

**"Aleck Shultz and family and John Brown and family started for Kansas last Friday".**

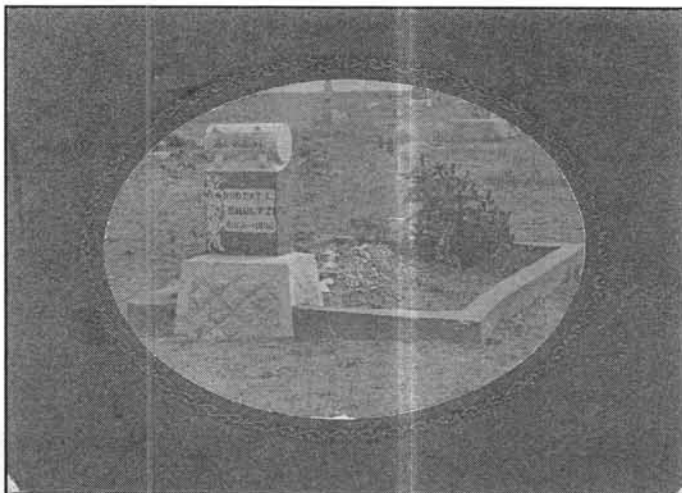
*Macoupin County Enquirer, March 23, 1887.*

Robert was the 5th child of 13 born to Alexander and Elenora Glotfelty Shultz. On that spring day in May 1895 they buried their fourth child. Sarah, John and Nancy died before Robert and were buried in Maryland and Illinois.

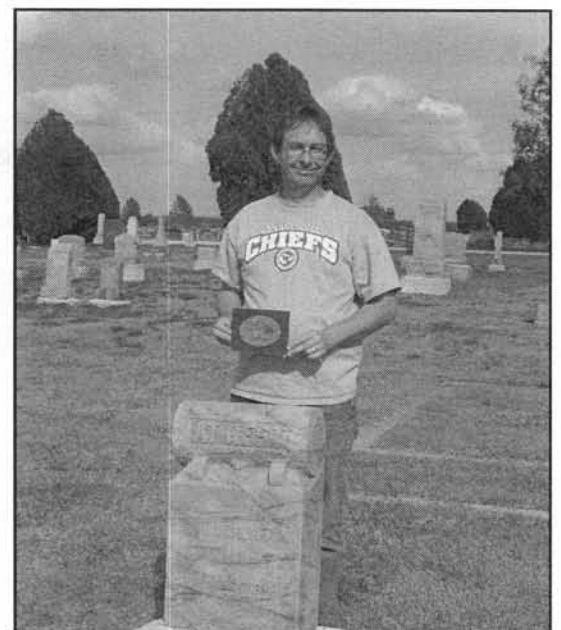
Over the years I have been drawn to this photo of his grave. Perhaps it is because of my interest in cemeteries. I have always felt he had been forgotten after his immediate family had passed on. Barry and I like to take weekend trips to see different parts of Kansas so this was a good time to incorporate my search for Robert into a trip. [For those of you that know me well enough you know that a cemetery stop or two, usually more, can always be counted on during our little trips]. I used the Kearny County message board to locate the cemetery name and with that information in hand Barry and I headed out for Kearny County last fall and visited Western Kansas. We arrived to a well kept cemetery that had a kiosk to aid us in finding his lot. It was a good thing because his headstone had changed some in the last 100 plus years. At the time of the photo his headstone was painted out to enhance the images and text on it. Today it is a weathered gray headstone. Barry and I used the photo to compare to the burials around Robert and determined the photo was taken about 5 to 10 years after his death.

The feeling I had was that of bringing him home again. We spent some time there visiting his resting place and took a stroll through the rest of the cemetery before heading off on our trip to see castle rock and the monument rocks.

Over the holidays I followed up on trying to locate his obituary in hopes of finding his cause of death. Through the Hutchinson Public Library I ordered microfilmed copies of two Kearny County newspapers and found the answer to my question. I'm glad that we were able to find his burial location and pay our respects.



Submitted by:  
Gale Wall



**Barry Wall at Robert's grave, holding the photo taken over 100 years ago.**

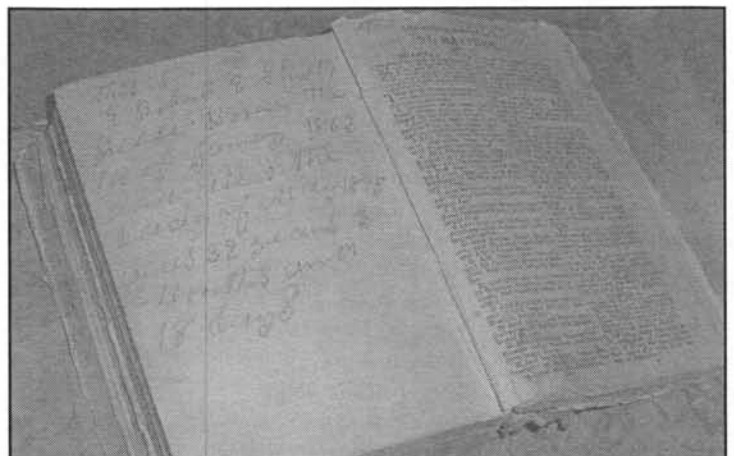
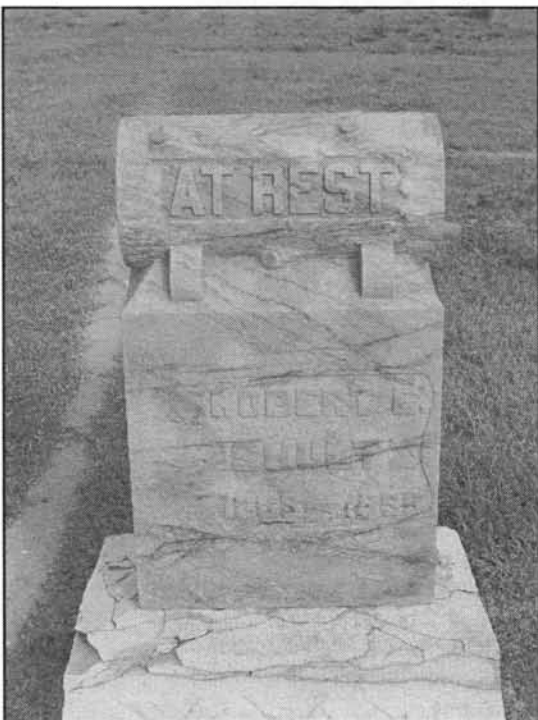


We regret to learn that our energetic friend Robert Schultz is confined to his home with a spell of sickness. Dr. Lovin was called to see him Wednesday. *Kearny County Advocate, 4/18/1895.*

Died. At the home of his parents in Southside township, May 2d, of consumption. Robert E. Shultz, age 32 years three months and 16 days. Deceased was born in Grantsville, Alleghany County, Maryland, Jan 14, 1863. Some two years since while following his occupation, he was exposed to a severe snow storm and was taken with the "grip" and since that time has been in failing health. Two months since he was compelled to cease work entirely and up to his death, that he was ready and willing to go to his Master, and be free from the pains and cares of this life. Funeral services were held at the home of his parents by Rev. C. E. Williams, and the unusually large procession that followed his remains to Lakin Cemetery, testified the respect and sorrow our citizens felt over his early and untimely death. Mr. and Mrs. Shultz request us to convey to the friends their heartfelt sympathy for the neighborly kindness manifested in their sore trial, and especially to H. P. Gaumaer and J. F. McDowell in the untiring help and aid during the illness of their son. Robert Shultz will be remembered by many friends for his diligence and energy in all the he undertook, and his disposition to aid and assist others when the opportunity offered, was one of his chief characteristics. *Kearny County Advocate, 5/9/1895.*

Robert E. Shultz, son of Alexander and Eleanora Shultz, was born in Grantsville, Alleghany County, MD on January 14th 1863, and died in Kearny county, Kansas on May 2nd 1895 and was buried, Saturday May 4th in the Lakin Cemetery. The funeral services were conducted by Rev. Williams and a large concourse of sorrowing friends followed his remains to their last resting place. The deceased came to Kansas in 1887 settling first in north Kearny, but for the last four or five years he has lived near Lakin where he was a respected citizen. Father, mother, four sisters and five brothers survive him. They have the sympathy of all their neighbors and the prayers of their Christian friends that God may sustain and comfort them. When questioned a short time before his departure, in regard to his souls welfare he answered, "I have been trusting in Jesus for about eight months". "Trusting in Jesus", he said at the last, when the sorrows of earth were soon to be past. Trusting in Jesus, the savior who died that all who are ready with him may abide. Trusting through anguish and physical pain, ah, surely our loss is his greatest gain. And to each weeping mourner I'm sure he would say if across the deep water we could hear him today, "Trust in Jesus, be ready when the angel shall come, to go with him gladly to the soul's happy home"\*.... *The Lakin Index, 5/10/1895.*

[\* shortened here]



**Bible that belonged to Robert Shultz.**

## Henry Rudesill Pupil Ledger

- Abendshien, Laura, Hutchinson, Kansas, 1909  
 Addis, J. S., Hutchinson, Kansas, 1906  
 Adkinson, Ruby, Hutchinson, Kansas, 1918  
 Ainslee, Mildred, Hutchinson, Kansas, 1909  
 Albertson, Carrie, Halstead, Kansas, 1895  
 Albright, Alva, Hutchinson, Kansas, 1933  
 Albright, Lucile, Hutchinson, Kansas, 1919  
 Albright, Maud, Hutchinson, Kansas, 1901  
 Albright, Ruth, Hutchinson, Kansas, 1919  
 Alexander, Amy, Hutchinson, Kansas, 1911  
 Allen, Martin, Hutchinson, Kansas, 1908  
 Allisen, Corrine, Hutchinson, Kansas, 1908  
 Allman, Jack Mrs., Hutchinson, Kansas, 1926  
 Ames, George, Ashland, Ohio, 1894  
 Ames, Helen, Hutchinson, Kansas, 1922  
 Anderson, Midge, Hutchinson, Kansas, 1910  
 Anderson, Midgie, Hutchinson, Kansas, 1900  
 Applegate, Violet, Hutchinson, Kansas, 1922  
 Apsley, Kate, Hutchinson, Kansas, 1902  
 Armstrong, Beulah, Hutchinson, Kansas, 1909  
 Arndt, William, Hutchinson, Kansas, 1920  
 Arrighi, Carl, Hutchinson, Kansas, 1910  
 Asher, Lucille, Darlow, Kansas, 1901  
 Asher, Ruth, Hutchinson, Kansas, 1900  
 Asher, Ruth, Hutchinson, Kansas, 1904  
 Aspey, Ione, Hutchinson, Kansas, 1912  
 Aspey, Maurine, Hutchinson, Kansas, 1911  
 Astle, Bryon, Hutchinson, Kansas, 1901  
 Astle, Dorothy, Hutchinson, Kansas, 1924  
 Astle, Geneveve, Hutchinson, Kansas, 1926  
 Astle, La Faun, Hutchinson, Kansas, 1924  
 Astle, Ruth, Hutchinson, Kansas, 1901  
 Ater, Nellie, Hutchinson, Kansas, 1909  
 Atkinson, Alta, Hutchinson, Kansas, 1909  
 Atkinson, George, Hutchinson, Kansas, 1927  
 Austermiller, Ralph, Hutchinson, Kansas, 1917  
 Austermiller, Sara M., Hutchinson, Kansas, 1919  
 Austin, Elsie, Hutchinson, Kansas, 1918  
 Austin, Margaret, Hutchinson, Kansas, 1918  
 Avery, Lillian, Hutchinson, Kansas, 1907  
 Axtel, Mamie, Halstead, Kansas, 1895  
 Baer, Adaline, Hutchinson, Kansas, 1909  
 Baer, Adaline, Hutchinson, Kansas, 1910  
 Bagh, Rena, Hutchinson, Kansas, 1902  
 Bailey, Bee, Hutchinson, Kansas, 1906  
 Bailey, Ladersa, Hutchinson, Kansas, 1907  
 Bailey, Nora, Hutchinson, Kansas, 1906  
 Baird, Bell, Hutchinson, Kansas, 1906  
 Baker, Dorothy, Hutchinson, Kansas, 1920  
 Baker, Earl, Hutchinson, Kansas, 1902  
 Baker, Frank Mrs., Hutchinson, Kansas, 1900  
 Baker, Sarah, Hutchinson, Kansas, 1908  
 Baker, Zetta, St John, Kansas, 1899-1901  
 Ball, Gertrude, Hutchinson, Kansas, 1909  
 Ballard, Lucy, Hutchinson, Kansas, 1911  
 Barrett, Galen, Hutchinson, Kansas, 1912  
 Barrett, Laurence, Hutchinson, Kansas, 1916  
 Barrett, Laurence, Hutchinson, Kansas, 1916  
 Barrett, N. T. Mrs., Hutchinson, Kansas, 1913  
 Barrett, Dorothy, Hutchinson, Kansas, 1913  
 Bean, Walter, St John, Kansas, 1899-1932  
 Bebout, Naomi, Hutchinson, Kansas, 1928  
 Bell, Joseph, Hutchinson, Kansas, 1917  
 Benedick, Harry, Castleton, Kansas, 1905  
 Benedick, Jessie, Hutchinson, Kansas, 1899  
 Bennett, Sam, Hutchinson, Kansas, 1914  
 Benscheidt, Elsie, Hutchinson, Kansas, 1909  
 Bertholdt, Anna, Halstead, Kansas, 1895  
 Blair, Stella, Hutchinson, Kansas, 1905  
 Blake, Floyd, Hutchinson, Kansas, 1906  
 Blanchard, Winnie, Kinsley, Kansas, 1897  
 Blizzard, Cloe, Hutchinson, Kansas, 1911  
 Blizzard, Pauline, Hutchinson, Kansas, 1914  
 Bloss, C. H. Mrs., Hutchinson, Kansas, 1913  
 Bloss, Mary, Hutchinson, Kansas, 1912  
 Boes, Maud, Hutchinson, Kansas, 1911  
 Booth, John, St John, Kansas, 1899-1931  
 Bowen, Ezekiel, Hutchinson, Kansas, 1908  
 Bowen, Verta, Hutchinson, Kansas, 1913  
 Boyd, Gale E., Hutchinson, Kansas, 1913  
 Boyier, Mrs., Hutchinson, Kansas, 1904  
 Boyse, S. R. (Pr of), Lawrence, Kansas, 1891  
 Brandt, T. R. Mrs., Hutchinson, Kansas, 1918  
 Branssard, Doris, Hutchinson, Kansas, 1912  
 Brashear, Maxine, Hutchinson, Kansas, 1923  
 Breckenridge, Mary, St John, Kansas, 1899-1900  
 Briant, Jean, Hutchinson, Kansas, 1918  
 Briant, Josephine, Hutchinson, Kansas, 1918  
 Briggs, Grace, Hutchinson, Kansas, 1933  
 Broadus, Emma, Hutchinson, Kansas, 1900  
 Brossghter, Helen, Hutchinson, Kansas, 1917  
 Broughton, Clarence, Hutchinson, Kansas, 1918  
 Broughton, Monica, Hutchinson, Kansas, 1925  
 Brown, Betty, Hutchinson, Kansas, 1926  
 Brown, Helen, Hutchinson, Kansas, 1910  
 Brown, J. C. Mrs., Hutchinson, Kansas, 1910  
 Brown, Louisa, Hutchinson, Kansas, 1922  
 Brown, Mary, Lyons, Kansas, 1935  
 Brown, Nellie, Hutchinson, Kansas, 1901  
 Brown, Nina, Hutchinson, Kansas, 1901  
 Brungardt, Clara, Hutchinson, Kansas, 1926  
 Bryan, Florence, Hutchinson, Kansas, 1908  
 Bryan, Thelma, Hutchinson, Kansas, 1921  
 Bryan, Wayne, Hutchinson, Kansas, 1925  
 Bryan, Zella, Hutchinson, Kansas, 1900  
 Buck, Florence, Hutchinson, Kansas, 1922  
 Buettner, May, Hutchinson, Kansas, 1905  
 Buettner, May, Hutchinson, Kansas, 1910  
 Buettner, Mildred, Hutchinson, Kansas, 1905  
 Buettner, Mildred, Hutchinson, Kansas, 1910  
 Buler, Blanche, Kinsley, Kansas, 1895  
 Bulgar, Gertrude, Hutchinson, Kansas, 1902  
 Bulgar, Josie, Hutchinson, Kansas, 1902  
 Bunker, L. A. Mrs., Hutchinson, Kansas, 1901  
 Bunker, Lloyd, Oberlin, Ohio, ?  
 Burke, James, Hutchinson, Kansas, 1905  
 Burrows, Kingdon, Hutchinson, Kansas, 1908  
 Buser, Myrtle, Hutchinson, Kansas, 1907

**Rudesill Cont'd**

- Bush, Alta, Hutchinson, Kansas, 1907  
 Bush, Clara, Hutchinson, Kansas, 1915  
 Bush, Flora, Hutchinson, Kansas, 1915  
 Buskirk, Alice, Hutchinson, Kansas, 1919  
 Bussinger, Mrs., Hutchinson, Kansas, 1902  
 Butler, Ella, Hutchinson, Kansas, 1892  
 Butters, Gela, Hutchinson, Kansas, 1902  
 Buttess, Neva, Hutchinson, Kansas, 1900  
 Byers, Florence, Hutchinson, Kansas, 1902  
 Byers, Hal, Hutchinson, Kansas, 1924  
 Byers, Phyllis, Hutchinson, Kansas, 1924  
 Byers, Rome, Hutchinson, Kansas, 1924  
 Byers, Walter, Hutchinson, Kansas, 1902  
 Caffery, Vera, Hutchinson, Kansas, 1901  
 Cain, Anna, Hutchinson, Kansas, 1904  
 Cain, Anna, Hutchinson, Kansas, 1906  
 Cain, Leslie, Hutchinson, Kansas, 1902  
 Campbell, Catheryn, Hutchinson, Kansas, 1924  
 Campbell, Maud, Hutchinson, Kansas, 1903  
 Campbell, Mosculine, Hutchinson, Kansas, 1922  
 Campbell, Roy, Hutchinson, Kansas, 1915  
 Campbill, Louis, Hutchinson, Kansas, 1908  
 Campbill, Mrs., Hutchinson, Kansas, 1908  
 Cape, Clair, So Hutch, Kansas, 1920  
 Carey, A. B. Mrs., Hutchinson, Kansas, 1905  
 Carey, Marjorie, Hutchinson, Kansas, 1922  
 Carey, Nellie, Hutchinson, Kansas, 1909  
 Carey, Walter, Hutchinson, Kansas, 1905  
 Carey, Zenita, Arlington, Kansas, 1902  
 Carter, Bryon, Hutchinson, Kansas, 1919  
 Carter, Cecil, Hutchinson, Kansas, 1915  
 Casey, Helen, Hutchinson, Kansas, 1916  
 Caskey, Nellie, Hutchinson, Kansas, 1910  
 Caskey, Stella, Hutchinson, Kansas, 1919  
 Chaffin, Laurina, Hutchinson, Kansas, 1908  
 Champion, Lillian, Hutchinson, Kansas, 1902  
 Chatman, Bernice, Hutchinson, Kansas, 1898  
 Cheatum, Helen, Langdon, Kansas, 1922  
 Chesbro, Margaret, Hutchinson, Kansas, 1919  
 Chesskin, Ethel, St John, Kansas, 1899-1918  
 Childs, Flossie, Hutchinson, Kansas, 1906  
 Chrismann, Dora, Hutchinson, Kansas, 1902  
 Christensen, Nellie, Hutchinson, Kansas, 1904  
 Christopher, Frank, Hutchinson, Kansas, 1904  
 Christopher, Nell, Hutchinson, Kansas, 1904  
 Clapp, Grace, Hutchinson, Kansas, 1910  
 Clark, Catheryn Mrs., Great Bend, Kansas, 1935  
 Clark, Fay, Hutchinson, Kansas, 1925  
 Clark, Grace, Hutchinson, Kansas, 1903  
 Clark, Walter, Hutchinson, Kansas, 1909  
 Clough, Grace, Hutchinson, Kansas, 1920  
 Clugston, Frank Mrs., Ashland, Ohio, 1890  
 Cockey, Anna, Hutchinson, Kansas, 1892  
 Cockey, Nellie, Hutchinson, Kansas, 1902  
 Coffey, Neta, Darlow, Kansas, 1927  
 Coffey, Parkaline, Hutchinson, Kansas, 1927  
 Cohen, Bertha, Hutchinson, Kansas, 1902  
 Cohen, Katie, Hutchinson, Kansas, 1902  
 Colby, Charles, Hutchinson, Kansas, 1931  
 Collier, E. S., Oberlin, Ohio, 1894  
 Collins, Virginia, Hutchinson, Kansas, 1922  
 Colver, Dessie, Kinsley, Kansas, 1895  
 Combs, Harry, Hutchinson, Kansas, 1915  
 Comes, Billy, Hutchinson, Kansas, 1931  
 Conaway, Anna, Hutchinson, Kansas, 1906  
 Conklin, Cora Mrs., Partridge, Kansas, 1912  
 Conklin, Eugene, Hutchinson, Kansas, 1925  
 Conklin, Frances, Hutchinson, Kansas, 1909  
 Conklin, Gene, Darlow, Kansas, 1901  
 Conklin, Hazel, Darlow, Kansas, 1901  
 Conklin, Virginia, Hutchinson, Kansas, 1909  
 Conley, Jack Mrs., Hutchinson, Kansas, 1921  
 Connell, Carrie, Hutchinson, Kansas, 1895  
 Connell, Ella, Hutchinson, Kansas, 1895  
 Conrad, O. D. Mrs., Hutchinson, Kansas, 1906  
 Cook, Daisy, Hutchinson, Kansas, 1909  
 Cook, George, Hutchinson, Kansas, 1909  
 Cook, Lillian, Hutchinson, Kansas, 1909  
 Cook, Rosa, Hutchinson, Kansas, 1909  
 Copeland, Jennie, St John, Kansas, 1899-1902  
 Copeland, Lorie, St John, Kansas, 1899-1929  
 Corey, Abbie, Hutchinson, Kansas, 1900  
 Corey, S. B. Mrs., Hutchinson, Kansas, 1904  
 Corrigan, Elizabeth, Hutchinson, Kansas, 1908  
 Cowan, Erda, Hutchinson, Kansas, 1904  
 Cowan, Erda, Hutchinson, Kansas, 1906  
 Cox, Chester, Nickerson, Kansas, 1932  
 Critly, Richard, Hutchinson, Kansas, 1923  
 Crosley, Galen, Hutchinson, Kansas, 1932  
 Crosley, Le Roy Mrs., Hutchinson, Kansas, 1932  
 Cross, Nora, Hutchinson, Kansas, 1902  
 Cross, Nora, Hutchinson, Kansas, 1905  
 Crow, Hazel, Hutchinson, Kansas, 1906  
 Crow, Lillah, Hutchinson, Kansas, 1906  
 Crow, Obara, Hutchinson, Kansas, 1908  
 Crutcher, Virginia, Inman, Kansas, 1929  
 Cummins, Adale, Arlington, Kansas, 1902  
 Cummins, Barbara, Hutchinson, Kansas, 1924  
 Cummins, Kenneth, Hutchinson, Kansas, 1920  
 Cummins, Joe, Hutchinson, Kansas, 1905  
 Danford, Ada, Hutchinson, Kansas, 1908  
 Danford, Pearl, Hutchinson, Kansas, 1907  
 Danford, Pearl, Hutchinson, Kansas, 1908  
 Dann, John, Hutchinson, Kansas, 1908  
 Daugherty, Alice, Hutchinson, Kansas, 1906  
 Daughtry, Mildred, Hutchinson, Kansas, 1906  
 Davis, Bertha, Hutchinson, Kansas, 1905  
 Davis, Freda, Hutchinson, Kansas, 1914  
 Davis, Ted, Hutchinson, Kansas, 1931  
 Dawson, Hazel, Nickerson, Kansas, 1926  
 Daykin, Dorothy, Hutchinson, Kansas, 1908  
 De Tar, De Los, Kinsley, Kansas, 1897  
 De Vine, Lizzie, Hutchinson, Kansas, 1906  
 De Vine, Nellie, Hutchinson, Kansas, 1906  
 Dean, Maud, Hutchinson, Kansas, 1899  
 Dean, Vern, Hutchinson, Kansas, 1899  
 Delano, Florence, Hutchinson, Kansas, 1909  
 Dennis, Lucy, Hutchinson, Kansas, 1911



## Rudesill Cont'd

- Diepolder, Mrs., Kinsley, Kansas, 1896  
 Dillon, Marie, Hutchinson, Kansas, 1922  
 Diveley, Harry, Hutchinson, Kansas, 1914  
 Diveley, Rex, Hutchinson, Kansas, 1904  
 Diveley, Rhea, Hutchinson, Kansas, 1914  
 Dixon, Flora, Hutchinson, Kansas, 1906  
 Dixon, Josie, Hutchinson, Kansas, 1901  
 Dixon, Nellie, Hutchinson, Kansas, 1906  
 Doner, Elsie, Hutchinson, Kansas, 1925  
 Dorrell, Blanche, Hutchinson, Kansas, 1904  
 Dorrell, Edna, Hutchinson, Kansas, 1902  
 Doty, Frances, Hutchinson, Kansas, 1911  
 Douglass, Adalaide, Hutchinson, Kansas, 1909  
 Douglass, Agness, Hutchinson, Kansas, 1909  
 Dowell, Fay, Hutchinson, Kansas, 1902  
 Drake, Florence, Darlow, Kansas, 1901  
 Dreibellis, Lucile, Hutchinson, Kansas, 1925  
 Drenslar, Nadine, Hutchinson, Kansas, 1923  
 Duckworth, Glenn, Hutchinson, Kansas, 1910  
 Dufeler, Adaline, Hutchinson, Kansas, 1892  
 Duncan, Ed, Hutchinson, Kansas, 1929  
 Duncan, Hazel, Langdon, Kansas, 1912  
 Duncan, Jessie May, Hutchinson, Kansas, 1931  
 Dunnett, Dimple, Hutchinson, Kansas, 1895  
 Durkin, James, Hutchinson, Kansas, 1914  
 Duvall, Bobby, Hutchinson, Kansas, 1935  
 Early, Orville, Hutchinson, Kansas, 1904  
 Eatinger, Lydia, Raymond, Kansas, 1906  
 Eaton, Elsie, Arlington, Kansas, 1902  
 Ebersole, Robert, Hutchinson, Kansas, 1927  
 Edmiston, Margaret, Hutchinson, Kansas, 1918  
 Edmonds, Carrie, Hutchinson, Kansas, 1906  
 Edmonds, Ruth, Hutchinson, Kansas, 1906  
 Eikelberger, Ed, Hutchinson, Kansas, 1929  
 Elbury, Edward, Hutchinson, Kansas, 1904  
 Elward, Virginia, Hutchinson, Kansas, 1902  
 Emmert, Mary, Darlow, Kansas, 1901  
 Emmert, Scott, Darlow, Kansas, 1901  
 Empey, Cleo, Hutchinson, Kansas, 1899  
 Empey, Georgie, Hutchinson, Kansas, 1899  
 English, Ann, Hutchinson, Kansas, 1930  
 English, Will Mrs., Hutchinson, Kansas, 1929  
 Epperson, Margaret, Hutchinson, Kansas, 1910  
 Erwin, Bessie, Kinsley, Kansas, 1897  
 Erwin, Elizabeth, Hutchinson, Kansas, 1918  
 Erwin, Lloyd, St John, Kansas, 1899-1933  
 Erwin, Mable, St John, Kansas, 1899-1903  
 Erwin, Rena, Hutchinson, Kansas, 1931  
 Evans, Evelyn, Hutchinson, Kansas, 1916  
 Evans, Wilma, Hutchinson, Kansas, 1916  
 Fair, Ona, Hutchinson, Kansas, 1899  
 Fair, Opal, Hutchinson, Kansas, 1898  
 Farley, Anna, Hutchinson, Kansas, 1910  
 Farrar, Laura, Sterling, Kansas, 1900-1901  
 Fauley, Maxine, Hutchinson, Kansas, 1927  
 Felbrath, Naomi, Hutchinson, Kansas, 1908  
 Ferris, Loraine, Hutchinson, Kansas, 1924  
 Ferris, Lorena, Hutchinson, Kansas, 1924  
 Ferris, Martell, Hutchinson, Kansas, 1924  
 Fetzer, Lilly, Hutchinson, Kansas, 1929  
 Fielder, Bessie, Hutchinson, Kansas, 1918  
 Findley, Edith, Sterling, Kansas, 1900-1901  
 Findley, Gertie, Sterling, Kansas, 1900-1901  
 Findley, Walter, Sterling, Kansas, 1900-1901  
 Firstenberg, John, Hutchinson, Kansas, 1902  
 Firstenberg, Marvin, Hutchinson, Kansas, 1902  
 Fisher, Oliver, Hutchinson, Kansas, 1910  
 Fisher, Viola, Hutchinson, Kansas, 1912  
 Fitzpatrick, Maud, Hutchinson, Kansas, 1911  
 Fleming, Genevola, Hutchinson, Kansas, 1919  
 Fleming, Thos F., Hutchinson, Kansas, 1921  
 Floyd, Eunice, Hutchinson, Kansas, 1917  
 Foeltzer, Gladys, Hutchinson, Kansas, 1905  
 Foley, Gertrude, Castleton, Kansas, 1905  
 Foote, Alma, Hutchinson, Kansas, 1917  
 Foote, Emma, Hutchinson, Kansas, 1917  
 Foote, Mary Ellen, Hutchinson, Kansas, 1919  
 Foran, Anna, Kinsley, Kansas, 1897  
 Ford, Grace, Arlington, Kansas, 1902  
 Foster, George, Hutchinson, Kansas, 1909  
 Foster, Ruth, Hutchinson, Kansas, 1908  
 Fowler, Billy, Hutchinson, Kansas, 1910  
 Fowler, Kathleen, Hutchinson, Kansas, 1917  
 Fowler, Margaret, Hutchinson, Kansas, 1917  
 Franz, Beatrice, Hutchinson, Kansas, 1931  
 Franz, Betty, Hutchinson, Kansas, 1931  
 Fravel, Mildred, Kinsley, Kansas, 1897  
 Frick, Norval, Hutchinson, Kansas, 1923  
 Friesen, Ernest, Hutchinson, Kansas, 1906  
 Fuller, Minnie, Castleton, Kansas, 1905  
 Gabrielson, Ester, Hutchinson, Kansas, 1902  
 Gabrielson, Mary, Hutchinson, Kansas, 1900  
 Galbreath, Albert, Hutchinson, Kansas, 1920  
 Galbreath, Douglas, Hutchinson, Kansas, 1920  
 Galloway, Arthur, Hutchinson, Kansas, 1906  
 Galloway, Blanche, Hutchinson, Kansas, 1906  
 Galloway, Florence, Hutchinson, Kansas, 1908  
 Galloway, Mary, Hutchinson, Kansas, 1907  
 Galloway, Ruby, Hutchinson, Kansas, 1906  
 Gallup, Ernestine, Hutchinson, Kansas, 1918  
 Gallup, Frank Mrs., Hutchinson, Kansas, 1910  
 Gallup, Morris, Hutchinson, Kansas, 1911  
 Gallup, Ray W., Hutchinson, Kansas, 1921  
 Gamer, Lucy, Kinsley, Kansas, 1895  
 Gardener, Levi, Hutchinson, Kansas, 1910  
 Gardener, Ruth, Hutchinson, Kansas, 1908  
 Gardner, Grace, Hutchinson, Kansas, 1905  
 Garrey, Charles, Hutchinson, Kansas, 1912  
 Gary, Myrtle, Sterling, Kansas, 1900-1901  
 Gass, Gwendolyn, Hutchinson, Kansas, 1927  
 Gass, Patty, Hutchinson, Kansas, 1928  
 Gatlin Harlie, Hutchinson, Kansas, 1901  
 Gatlin, Verlie, Hutchinson, Kansas, 1901  
 Geisman, Opal, Hutchinson, Kansas, 1930  
 Getaz, L. A. Mrs., Hutchinson, Kansas, 1912  
 Getter, Pauline, Hutchinson, Kansas, 1908  
 Ghormley, Clarence, Hutchinson, Kansas, 1914  
 Ghormley, Dales, Hutchinson, Kansas, 1910

## Rudesill Cont'd

- Ghormley, Helen, Hutchinson, Kansas, 1912  
 Ghormley, Ray, Hutchinson, Kansas, 1907  
 Ghormley, William, Hutchinson, Kansas, 1914  
 Gibbs, Lucille, Hutchinson, Kansas, 1908  
 Gilbert, Bess, Kinsley, Kansas, 1897  
 Gilbert, Molley, St John, Kansas, 1899-1921  
 Gilbert, Sadie, Kinsley, Kansas, 1897  
 Gilchrist, Fern, Hutchinson, Kansas, 1903  
 Gilchrist, Fern, Hutchinson, Kansas, 1905  
 Giles, Gertrude, Hutchinson, Kansas, 1914  
 Gillchrist, Nellie, Kinsley, Kansas, 1896  
 Gilmore, Don, Hutchinson, Kansas, 1922  
 Gilmore, Ethel, Hutchinson, Kansas, 1910  
 Gilmore, Valda, Hutchinson, Kansas, 1922  
 Gisel, Vernon, Hutchinson, Kansas, 1930  
 Gist, Florence, Hutchinson, Kansas, 1911  
 Glasscock, Rena, St John, Kansas, 1899-1927  
 Glendeming, W. C. Mrs., Newton, Kansas, 1892  
 Graber, Irwin, Hutchinson, Kansas, 1921  
 Grandy, Pearl, St John, Kansas, 1899-1904  
 Gray, Addie, Hutchinson, Kansas, 1909  
 Green, Marie, Hutchinson, Kansas, 1913  
 Green, Mildred, Hutchinson, Kansas, 1918  
 Gregg, Florence, Hutchinson, Kansas, 1893  
 Gregg, Mrs. ( Dr. ), Hutchinson, Kansas, 1892  
 Griffeth, A. J., Hutchinson, Kansas, 1902  
 Guesen, R. A. Mrs., Turon, Kansas, 1911  
 Gulick, Frances, Hutchinson, Kansas, 1922  
 Gustafson, Carrie, Hutchinson, Kansas, 1907  
 Guyman, Ned, Hutchinson, Kansas, 1913  
 Guymon, Ned, Hutchinson, Kansas, 1907  
 Haas, Harry H., Hutchinson, Kansas, 1921  
 Hafner, Helen, Haven, Kansas, 1913  
 Haines, Florence, Hutchinson, Kansas, 1900  
 Hallett, Addie, Hutchinson, Kansas, 1917  
 Hallett, Arline, Hutchinson, Kansas, 1916  
 Hallett, Ruth, Hutchinson, Kansas, 1919  
 Hamilton, Kathryn, Hutchinson, Kansas, 1908  
 Hammer, Alice, Hutchinson, Kansas, 1900  
 Hammer, Leonard, Hutchinson, Kansas, 1901  
 Handy, Mannie, Hutchinson, Kansas, 1906  
 Hantla, Ernest, St John, Kansas, 1899-1935  
 Harbold, Ethel, Hutchinson, Kansas, 1913  
 Harlan, Leah, St John, Kansas, 1899-1905  
 Harleson, Alma, Stafford, Kansas, 1930  
 Harmon, Beulah, Hutchinson, Kansas, 1909  
 Harmon, Blanche, Hutchinson, Kansas, 1915  
 Harris, Jessie, Darlow, Kansas, 1901  
 Harris, Marshall, Hutchinson, Kansas, 1923  
 Harris, Sam, Hutchinson, Kansas, 1917  
 Harrison, Fay, Hutchinson, Kansas, 1910  
 Harrison, Iva, St John, Kansas, 1899-1922  
 Harsha, Helen, Partridge, Kansas, 1910  
 Hartman, Lenora, Arlington, Kansas, 1902  
 Hartman, Lucille, Hutchinson, Kansas, 1908  
 Hartman, Minor, Arlington, Kansas, 1902  
 Harwood, Carmalita, Hutchinson, Kansas, 1917  
 Harwood, Sallie, Hutchinson, Kansas, 1919  
 Haskett, Betty, Hutchinson, Kansas, 1917  
 Hawkes, Winnifred, Hutchinson, Kansas, 1902  
 Hawkins, Hazel, Sterling, Kansas, 1900-1901  
 Hawkins, Marie, Sterling, Kansas, 1900-1901  
 Heart, Francis, Hutchinson, Kansas, 1904  
 Heart, H. A. Mrs., Hutchinson, Kansas, 1910  
 Hebron, Tottie, Kinsley, Kansas, 1895  
 Henderson, Minnie, St John, Kansas, 1899-1934  
 Herr, Lucille, Hutchinson, Kansas, 1915  
 Heryer, Madelina, Hutchinson, Kansas, 1898  
 Hettinger, John, Hutchinson, Kansas, 1899  
 Hibbert, Ada, Hutchinson, Kansas, 1919  
 Hildebrandt, Alice, Hutchinson, Kansas, 1925  
 Hildebrandt, Loretta, Hutchinson, Kansas, 1904  
 Hill, Clemmie, Hutchinson, Kansas, 1909  
 Hill, Joseph, Hutchinson, Kansas, 1934  
 Hill, Margaret, Hutchinson, Kansas, 1901  
 Hillery, Dorothy, Hutchinson, Kansas, 1919  
 Hillery, Katherine, Hutchinson, Kansas, 1919  
 Hilsner, May, St John, Kansas, 1899-1936  
 Hinkle, Mrs., Hutchinson, Kansas, 1901  
 Hinkle, Pearl, Halstead, Kansas, 1895  
 Hipple, Eugene, Hutchinson, Kansas, 1904  
 Hipple, Floyd, Hutchinson, Kansas, 1904  
 Hipple, Mildred, Hutchinson, Kansas, 1910  
 Hirsh, Lilah, Hutchinson, Kansas, 1901  
 Hirst, Elizabeth, Hutchinson, Kansas, 1919  
 Hitchcock, Hazel, Hutchinson, Kansas, 1912  
 Hoaglin, Mrs., St John, Kansas, 1899-1930  
 Hobbs, Elma, Hutchinson, Kansas, 1920  
 Hockett, Ethel, Sterling, Kansas, 1900-1901  
 Hockett, Muriel, Sterling, Kansas, 1900-1901  
 Hoffman, Doyle, Hutchinson, Kansas, 1916  
 Hoffman, Hattie, Ashland, Ohio, 1894  
 Hogan, Loraine, Hutchinson, Kansas, 1919  
 Holland, Nora, Hutchinson, Kansas, 1904  
 Holliday, Harry, Hutchinson, Kansas, 1904  
 Hollinger, Gertrude, Hutchinson, Kansas, 1924  
 Hollinger, Vera, Hutchinson, Kansas, 1924  
 Holmes, Naoma, Hutchinson, Kansas, 1912  
 Hooker, De Vere, Hutchinson, Kansas, 1922  
 Hooker, Merrill Mrs., Hutchinson, Kansas, 1930  
 Horn, Ethel, Hutchinson, Kansas, 1919  
 Horton, Hazel, Arlington, Kansas, 1914  
 Hottiwitz, Rosa, Kinsley, Kansas, 1896  
 Houck, Billie Marie, Hutchinson, Kansas, 1935  
 House, Mable, Darlow, Kansas, 1911  
 Howard, Anna, Hutchinson, Kansas, 1913  
 Howard, Ida, Hutchinson, Kansas, 1902  
 Howe, Ira E. Mrs., Hutchinson, Kansas, 1908  
 Huckmer, Barbara, Hutchinson, Kansas, 1930  
 Huckmer, Beverly, Hutchinson, Kansas, 1930  
 Huler, May, Hutchinson, Kansas, 1901  
 Hullhorst, Eva, St John, Kansas, 1899-1928  
 Hunter, Paul, Hutchinson, Kansas, 1899  
 Huntsberger, Frankie, Halstead, Kansas, 1895  
 Hurty, Walter, Hutchinson, Kansas, 1925  
 Hutchinson, C. C. Mrs., Hutchinson, Kansas, 1901  
 Hutchinson, Nettie, Hutchinson, Kansas, 1900  
 Hutten, E. Mrs., Hutchinson, Kansas, 1901

## Rudesill Cont'd

- Igon, Dorothy, Hutchinson, Kansas, 1912  
 Igon, H. T. Mrs., Hutchinson, Kansas, 1909  
 Ingram, Mildred, Hutchinson, Kansas, 1919  
 Ingram, Nora, Hutchinson, Kansas, 1919  
 Ingram, Opal, Hutchinson, Kansas, 1919  
 Ivey, Ethel, Hutchinson, Kansas, 1904  
 Jeffs, Lulu Mrs., Hutchinson, Kansas, 1903  
 Jennings, Mable, Hutchinson, Kansas, 1905  
 Jessup, Dottie, Hutchinson, Kansas, 1899  
 Johnson, Betty, Hutchinson, Kansas, 1928  
 Johnson, D. Mrs., Hutchinson, Kansas, 1910  
 Johnson, Edna, Hutchinson, Kansas, 1904  
 Johnson, Gertrude, Hutchinson, Kansas, 1920  
 Johnson, Helen, Hutchinson, Kansas, 1910  
 Johnson, Mary, Hutchinson, Kansas, 1918  
 Johnson, Morris, Hutchinson, Kansas, 1931  
 Johnson, Prynthia, Hutchinson, Kansas, 1920  
 Jolley, Imogene, Hutchinson, Kansas, 1916  
 Jolley, Wade, Hutchinson, Kansas, 1916  
 Jones, Bessie, Hutchinson, Kansas, 1910  
 Jones, Harold, Hutchinson, Kansas, 1917  
 Jones, Harry Mrs., Hutchinson, Kansas, 1917  
 Jones, Jessie, Hutchinson, Kansas, 1909  
 Jones, Leota, Hutchinson, Kansas, 1915  
 Jones, Ollie, Hutchinson, Kansas, 1892  
 Jones, Rachel, Hutchinson, Kansas, 1892  
 Jurgens, Leon, Hutchinson, Kansas, 1918  
 Justice, Ruth, Hutchinson, Kansas, 1917  
 Keedy, Marcus, Hutchinson, Kansas, 1908  
 Kellam, Anna, Hutchinson, Kansas, 1911  
 Keller, Myrtle, Hutchinson, Kansas, 1906  
 Kelley, F. W. Mrs., Hutchinson, Kansas, 1907  
 Kelley, Irene, Hutchinson, Kansas, 1907  
 Kendall, C. M. Mrs., Hutchinson, Kansas, 1901  
 Kennedy, Mame, Oberlin, Ohio, 1893  
 Kerr, Alice, Hutchinson, Kansas, 1908  
 Kerr, John, Hutchinson, Kansas, 1909  
 Kerr, Paul, Hutchinson, Kansas, 1909  
 Kidwell, Vivian, Hutchinson, Kansas, 1925  
 Kimbrough, Maxine, Hutchinson, Kansas, 1932  
 Kindel, R. O., Hutchinson, Kansas, 1910  
 King, George, Hutchinson, Kansas, 1902  
 King, Lucile, Hutchinson, Kansas, 1921  
 King, Mazie June, Hutchinson, Kansas, 1932  
 King, Myrtle Mrs., Castleton, Kansas, 1905  
 Kintzel, Darline, Hutchinson, Kansas, 1930  
 Kintzel, Joe, Hutchinson, Kansas, 1932  
 Kintzel, Velma, Hutchinson, Kansas, 1930  
 Kirkpatrick, Paul, Hutchinson, Kansas, 1915  
 Kitch, A. S. Mrs., Hutchinson, Kansas, 1904  
 Kitzmiller, Clifford, Hutchinson, Kansas, 1916  
 Klein, Minnie, Darlow, Kansas, 1901  
 Klinch, Frances, Hutchinson, Kansas, 1906  
 Kneiper, Lillian, Hutchinson, Kansas, 1910  
 Knight, Mildred, Hutchinson, Kansas, 1906  
 Knobe, Blanche, Hutchinson, Kansas, 1902  
 Kohler, Lucy, Kinsley, Kansas, 1896  
 Kohler, Martha, Kinsley, Kansas, 1896  
 Kraft, Esta, Hutchinson, Kansas, 1921  
 Krauter, Edna, Hutchinson, Kansas, 1919  
 Krehbiel, Bernard, Halstead, Kansas, 1895  
 Krehbiel, John, Hutchinson, Kansas, 1920  
 Krehbiel, Martha, Halstead, Kansas, 1895  
 Lackey, Arthur, Hutchinson, Kansas, 1909  
 Lamb, Gayle, Hutchinson, Kansas, 1922  
 Lamborn, Bennie, Hutchinson, Kansas, 1902  
 Lamborn, Hazel, Hutchinson, Kansas, 1913  
 Lamborn, Helen, Hutchinson, Kansas, 1906  
 Lamborn, Paul, Hutchinson, Kansas, 1927  
 Lamborn, Roy, Ashland, Ohio, 1894  
 Lamborn, Roy, Kinsley, Kansas, 1897  
 Lamborn, Virginia, Hutchinson, Kansas, 1927  
 Lamont, Maude, Hutchinson, Kansas, 1907  
 Lang, Bessie, Hutchinson, Kansas, 1902  
 Lang, Bessie, Hutchinson, Kansas, 1906  
 Lang, Helen, Hutchinson, Kansas, 1905  
 Lang, Mildred, Hutchinson, Kansas, 1902  
 Larean, R. Mrs., Hutchinson, Kansas, 1918  
 Lauderbach, Edith, Hutchinson, Kansas, 1906  
 Lauer, Bessie, Hutchinson, Kansas, 1907  
 Laurance, Ethelyn, Hutchinson, Kansas, 1919  
 Laurence, Viola, Hutchinson, Kansas, 1913  
 Lawson, Gretchen, Hutchinson, Kansas, 1918  
 Lawson, Ruth, Hutchinson, Kansas, 1916  
 Lee, Bessie, Hutchinson, Kansas, 1902  
 Lee, Lucille, Hutchinson, Kansas, 1911  
 Lee, Opal, Langdon, Kansas, 1923  
 Lehman, Sarah, Halstead, Kansas, 1895  
 Leighty, Sabina, Hutchinson, Kansas, 1910  
 Lemon, Wilma, Hutchinson, Kansas, 1920  
 Leonard, Winnifred, Hutchinson, Kansas, 1910  
 Lewis, Daisy, Hutchinson, Kansas, 1917  
 Lewis, Hershel, Hutchinson, Kansas, 1920  
 Lewis, Lorraine, Kinsley, Kansas, 1897  
 Lill, Kate, St John, Kansas, 1899-1906  
 Linke, Mildred, Hutchinson, Kansas, 1911  
 Linn, Edna, Halstead, Kansas, 1895  
 Linshis, Anna, Hutchinson, Kansas, 1900  
 Livingood, Clara, Hutchinson, Kansas, 1902  
 Livingood, Pearl, Hutchinson, Kansas, 1902  
 Livshis, Laura, Hutchinson, Kansas, 1908  
 Livshis, Lillie, Hutchinson, Kansas, 1906  
 Livshis, Louis, Hutchinson, Kansas, 1908  
 Livshis, Mary, Hutchinson, Kansas, 1901  
 Long, Blanche, St John, Kansas, 1899-1923  
 Long, Dora, Hutchinson, Kansas, 1909  
 Lorean, Eva, Hutchinson, Kansas, 1919  
 Lorimor, Eloise, Hutchinson, Kansas, 1909  
 Loso, Fred, Kinsley, Kansas, 1896  
 Loso, Mrs., Kinsley, Kansas, 1896  
 Lowderm, Charlotte, Hutchinson, Kansas, 1910  
 Lowderm, Myrtle, Hutchinson, Kansas, 1910  
 Loyd, Louise, Hutchinson, Kansas, 1905  
 Lynch, Margaret, Hutchinson, Kansas, 1922  
 Madge Workman, Ashland, Ohio, 1890  
 Maeser, E. L. Mrs., Hutchinson, Kansas, 1923  
 Main, Ida, St John, Kansas, 1899-1938  
 Maning, Lila M., Hutchinson, Kansas, 1909



**Rudesill Cont'd**

Mann, Mable Lucille, Hutchinson, Kansas, 1911  
 Mantele, A. V. Mrs., Hutchinson, Kansas, 1904  
 Marsh, Mable, Kinsley, Kansas, 1897  
 Marshall, Robert, Hutchinson, Kansas, 1923  
 Marshall, Robert, Hutchinson, Kansas, 1934  
 Marshall, Roxanah, Hutchinson, Kansas, 1906  
 Martin, Clara, Hutchinson, Kansas, 1902  
 Martin, Elizabeth, Hutchinson, Kansas, 1901  
 Martin, John, Hutchinson, Kansas, 1902  
 Martin, Maud, Hutchinson, Kansas, 1923  
 Martin, Van, Hutchinson, Kansas, 1901  
 Mason, Julia, Ashland, Ohio, 1894  
 Matter, Wm. E., Hutchinson, Kansas, 1906  
 Maxen, Maud, St John, Kansas, 1899-1926  
 Mayberry, Ethel, Hutchinson, Kansas, 1905  
 Mayfield, Martha, Hutchinson, Kansas, 1929  
 Mc Candless, Frank, Hutchinson, Kansas, 1913  
 Mc Clain, G. L. Mrs., Hutchinson, Kansas, 1905  
 Mc Collon, Jessie, Hutchinson, Kansas, 1919  
 Mc Daniel, Nola, Hutchinson, Kansas, 1925  
 Mc Kee, Pearl Mrs., Hutchinson, Kansas, 1917  
 Mc Kee, Raymond, Hutchinson, Kansas, 1911  
 Mc Kenzie John, Hutchinson, Kansas, 1913  
 Mc Kenzie, Maurine, Hutchinson, Kansas, 1913  
 Mc Lane, Lyle Mrs., Hutchinson, Kansas, 1910  
 Mc Laughlin, Freda, Hutchinson, Kansas, 1908  
 Mc Millon, Agatha, Hutchinson, Kansas, 1907  
 Mc Vay, Cecil, Sterling, Kansas, 1900-1901  
 McGrath, Anna, Kinsley, Kansas, 1895  
 McMichael, Florence, Kinsley, Kansas, 1895  
 McNair, Edith, Halstead, Kansas, 1895  
 Mead, Sterling, Hutchinson, Kansas, 1909  
 Measer, Millicent, Hutchinson, Kansas, 1906  
 Merrill, Blanche, Hutchinson, Kansas, 1906  
 Might, Mamie, Hutchinson, Kansas, 1908  
 Milburn, Fern, Hutchinson, Kansas, 1910  
 Miles, Ida, St John, Kansas, 1899-1937  
 Miles, Laura, St John, Kansas, 1899-1939  
 Miller, Agness, St John, Kansas, 1899-1908  
 Miller, Dorothy, Hutchinson, Kansas, 1902  
 Miller, Lucile, Burrton, Kansas, 1920  
 Mills, Alvin, Hutchinson, Kansas, 1934  
 Mills, Cecil, Hutchinson, Kansas, 1929  
 Mills, Fredda, Burrton, Kansas, 1931  
 Milne, Donald, Hutchinson, Kansas, 1923  
 Milne, Mrs., Hutchinson, Kansas, 1923  
 Miner, Corrine, Hutchinson, Kansas, 1911  
 Mitchell, Ana, Hutchinson, Kansas, 1909  
 Mitchell, Barbara, Arlington, Kansas, 1911  
 Mitchell, Mary Lee, Hutchinson, Kansas, 1920  
 Montgomery, Luella, Hutchinson, Kansas, 1900  
 Montgomery, Lydia, Hutchinson, Kansas, 1900  
 Moodey, G.L. Mrs., Hutchinson, Kansas, 1902  
 Moore, Clara, Arlington, Kansas, 1902  
 Moore, Myrtle, Hutchinson, Kansas, 1900  
 Moore, Myrtle, Hutchinson, Kansas, 1901  
 Moore, Paul, Arlington, Kansas, 1902  
 Morris, Irene, Hutchinson, Kansas, 1918

Morris, La Verne Mrs., Hutchinson, Kansas, 1933  
 Morse, Leila, Kinsley, Kansas, 1895  
 Morse, Lola, Kinsley, Kansas, 1895  
 Mouring, Edna, Hutchinson, Kansas, 1922  
 Mouring, Lydia, Hutchinson, Kansas, 1922  
 Mowery, Pearl, Hutchinson, Kansas, 1908  
 Munhall, Blanche, Hutchinson, Kansas, 1906  
 Myers, Carl, Sterling, Kansas, 1900-1911  
 Myers, Earl, St John, Kansas, 1899-1907  
 Myers, Lora, Hutchinson, Kansas, 1935  
 Myers, Lorna, Burrton, Kansas, 1920  
 Nagel, Mary, St John, Kansas, 1899-1909  
 Nelson, A. J. Mrs., Hutchinson, Kansas, 1904  
 Nelson, Beulah, Hutchinson, Kansas, 1905  
 Nelson, Bulah, Hutchinson, Kansas, 1908  
 Nelson, Celestine, Hutchinson, Kansas, 1913  
 Nelson, Cleo, Hutchinson, Kansas, 1906  
 Nelson, Jimmie, Hutchinson, Kansas, 1907  
 Nelson, Marguerite, Hutchinson, Kansas, 1906  
 Nelson, Marie, Hutchinson, Kansas, 1908  
 Nelson, Nellie, Hutchinson, Kansas, 1907  
 Nesbitt, Emma Mrs., Hutchinson, Kansas, 1915  
 Nesbitt, George, Hutchinson, Kansas, 1914  
 Nesbitt, Ralph, Hutchinson, Kansas, 1914  
 Newlin, Nina, Hutchinson, Kansas, 1910  
 Newton, Evelyn, Hutchinson, Kansas, 1916  
 Newton, Fae, Hutchinson, Kansas, 1916  
 Nichols, George, Hutchinson, Kansas, 1907  
 Nichols, Mary, Hutchinson, Kansas, 1909  
 Nickel, Helen, Inman, Kansas, 1929  
 Nickel, Mary, Inman, Kansas, 1929  
 Niles, Marjorie, Hutchinson, Kansas, 1910  
 Northsup, Mable, St John, Kansas, 1899-1910  
 Northsup, Mable, Sterling, Kansas, 1900-1901  
 O' Connor Cornelius, St John, Kansas, 1899-1912  
 O' Connor, Agness, St John, Kansas, 1899-1913  
 O' Connor, Josie, St John, Kansas, 1899-1911  
 O' Neal, Lulu, Hutchinson, Kansas, 1906  
 O' Neal, Ruth, Hutchinson, Kansas, 1898  
 Obee, Doyle, Hutchinson, Kansas, 1907  
 Obee, Harold, Hutchinson, Kansas, 1907  
 Obee, Isabell, Hutchinson, Kansas, 1911  
 Obee, Kathryn, Hutchinson, Kansas, 1912  
 Obee, Phyllis, Hutchinson, Kansas, 1911  
 Odgen, Billy, Hutchinson, Kansas, 1918  
 Oleson, Harold, Hutchinson, Kansas, 1931  
 Oleson, Harry, Hutchinson, Kansas, 1931  
 Oleson, Lenora, Hutchinson, Kansas, 1929  
 Omen, Laberta, Hutchinson, Kansas, 1904  
 Oswald, Lewis, Hutchinson, Kansas, 1908  
 Oswald, Wallace, Hutchinson, Kansas, 1908  
 Oswald, Alanda, Hutchinson, Kansas, 1907

**To be cont'd**

Thank you to RCGS member, Darren McMannis, for donating this ledger to our society and to Kathleen Dankanyin for typing the list. The next installment will feature information about Henry Rudesill.

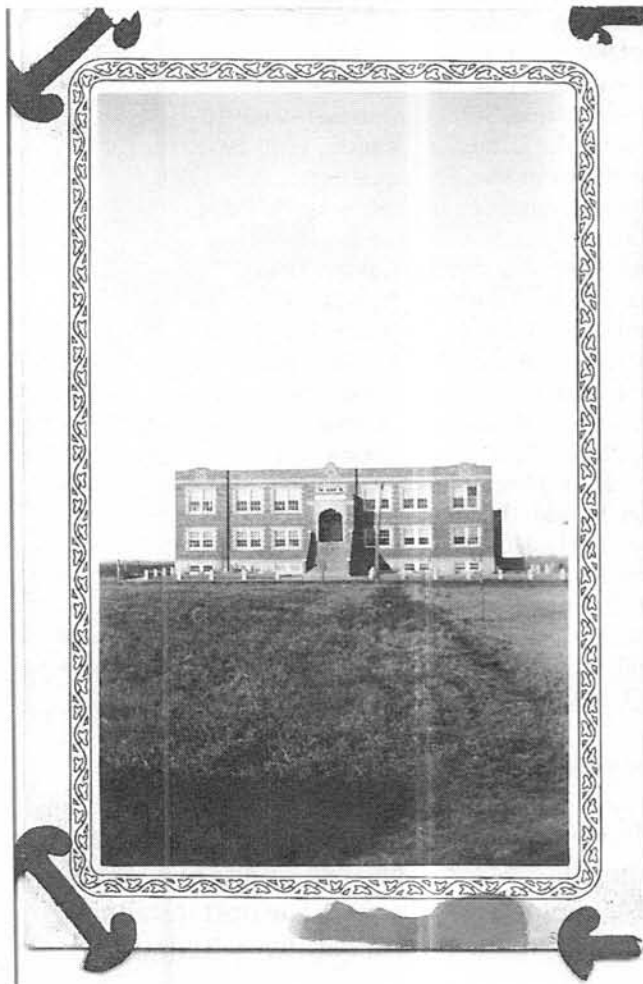
## Photos & Postcards

These are the last of the photos sent to us by the Marshall County Historical Society from the scrapbook of Ed Brychta who taught at Arlington High School in the 1930's.

Right: Ralph E. Young

Below left: Arlington Rural High School

Below right: Irvin Rump. Graduate of McPherson College 1931.  
Coached at Arlington High School 1931-32 and 1932-33.

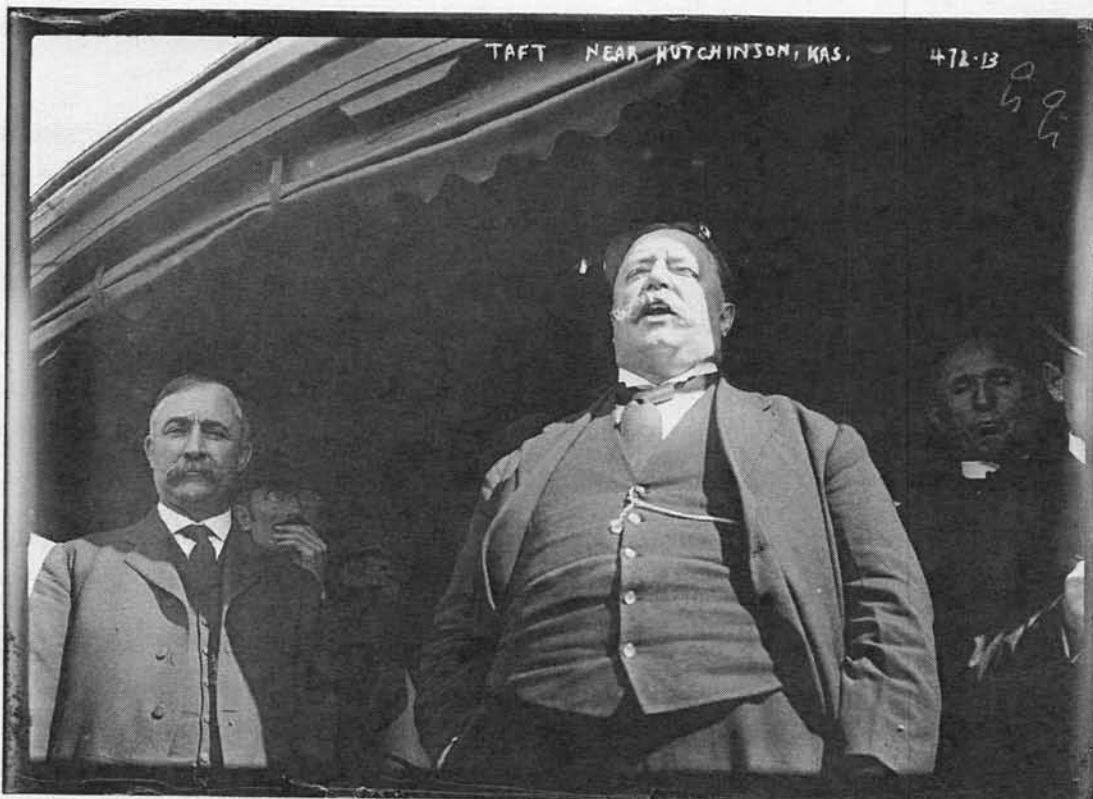


Photos from the Library of Congress



Taft crowd,  
Hutchinson, KS

William Howard Taft (September 15, 1857 – March 8, 1930) - 27th President



Taft, near  
Hutchinson, KS



## Churchyard Literature: A Short Essay on Epitaphs

By Stephanie Lincecum

I have been studying epitaphs quite a bit lately and decided to make them the subject of this edition of *Graveyard Guru*. The word *epitaph* is from the Greek word *epitaphios* and translates literally to “on the gravestone.” Epitaphs take on many forms, from simply a name with dates, to a long dissertation about the deceased. It might be in the form of a quote, poem, Bible scripture, or a humorous one-liner. While today, short and simple inscriptions are common, much longer ones were more the norm from roughly the 14<sup>th</sup> through the 19<sup>th</sup> centuries.

Epitaphs are sometimes used to speak to the visitor of a particular gravesite. A fairly well-known epitaph of this nature is the following:

*Stranger, stop and cast an eye,*

*As you are now, so once was I.*

*As I am now, so you will be,*

*Prepare for death and follow me.*

An epitaph such as this can also be described as “Memento Mori.” An often artistic creation used for the purpose of reminding people of their own mortality.

E. R. Shushan, in the book *Grave Matters: A Curious Collection of 500 Actual Epitaphs*, describes epitaphs as “a continuing dialogue between the dead and the living, providing histories, warnings, prayers, and comfort to those who come after.” Dr. S. Johnson, in *Gleanings from God’s Acre*, states the intention of epitaphs is to honor the person deceased and perpetuate their “examples of virtue.” However, as stated in an 1876 *New York Times* article, “The annals of the poor, and of the rich, as they are recorded on the venerable tombstones of the quaint old parish graveyards in England and this country, are not always sweet and simple.”

Shushan goes on to describe how the Ancient Egyptians recorded the history of the deceased and reminded the living of their own mortality with the building of tombs and pyramids. The Greeks did not put importance on identifying the deceased, but chose to write verses that remind the reader of the universality of death.

Many early societies employed “sepulchral iconography,” the use of beautiful, elaborate, and detailed scenes or panoramas portraying the life of the deceased, as well as written inscriptions.

The Romans buried their dead alongside major highways as a constant reminder to the living. They also identified the dead with a portrait and inscription. Many of their epitaphs began with “Sta, viator!” This translates to “Stop, reader!” The Romans were the ones to introduce tombstone inscriptions to England.

W. Fairley, in *Epitaphiana: The Curiosity of Churchyard Literature*, cites a common, early English epitaph: *Affliction sore long time I bore.*

The collecting and studying of epitaphs is not new. According to Fairley (*Epitaphiana*, published 1873), there are books on the subject dating back to 1645. Dr. S. Johnson (*Gleanings from God’s Acre*, published 1883) says epitaphs are entitled to more than a common regard because they “are probably of the same age with the art of writing.”

I consider epitaphs to be a form of cemetery art. A disappearing art, in fact. As stated in the 1876 "Churchyard Literature" article in the *New York Times*, "...many of the most venerable inscriptions are becoming obliterated, and there is no enthusiastic Old Mortality in these days wandering about from the Atlantic to the Pacific restoring the inscriptions on the stones over the graves of the pioneers of American colonization."

Even as the hobby of genealogy becomes more and more popular, this lack of respect for the epitaph is still alive today. I have noticed this myself, when checking to see if a particular gravestone I have transcribed and/or photographed has been entered in to the huge **Find A Grave** database. There are many stones that I know for a fact contained an epitaph more than just the name and dates of the deceased, yet that is all the contributor felt necessary to include in the memorial. While there is a chance the few lines of poetry added to the stone meant nothing to the deceased, I suggest to you that is rarely the case. Those few lines might have been from their favorite poem. Knowing that, for example, would give you further information about your ancestor.

While it is impossible for me to show you in this article examples of all the different epitaphs written over their long history, I can share with you a few. My favorite category of epitaphs are the ones that describe how an individual died. Even though the subject is somber, sometimes I cannot help but chuckle at the wording used. I will list three. The first is quite serious and beautiful in its own way, and the other two gave me a grin.

\*\*\*\*\*

*"In Memory of Joseph Salter, aged 17 years, son of Capt. Richard Salter of Portsmouth, N. H., the beloved youth ascended in the flames of a mansion house on yonder hill Saturday morning, Feb. 6, 1802 at 4 o'clock A.M.*

*Glorify ye the Lord in the Fires. Isaiah 24, 5*

*As from Manoah's rock in ancient days*

*Uprose the Angel from surrounding blaze*

*Thus rose the spirit of the son of Love*

*On fiery pinneons to the realms above."*

From New Hampshire. Source is The Magazine of History with Notes and Queries, Volume 19 (published 1914).

\*\*\*\*\*

*"Here lies the body of Mary Ann Lowder,*

*She burst while drinking a seidlitz powder.*

*Called from this world to her heavenly rest,*

*She should have waited till it effervesced."*

From St. Mary's Churchyard in Burlington, New Jersey. Source is *NY Times* article already mentioned.

*"To the azure depths of the upper air  
 His body had flown, flown, flown.  
 A bit of him here, and a bit of him there,  
 And over the landscape everywhere --  
 It now lies strewn, strewn, strewn,  
 But his soul, I believe, and am willing to swear  
 Is grandly climbing the golden stair,  
 To an anti-glycerine tune:  
 Gone where they don't put up in cans."*

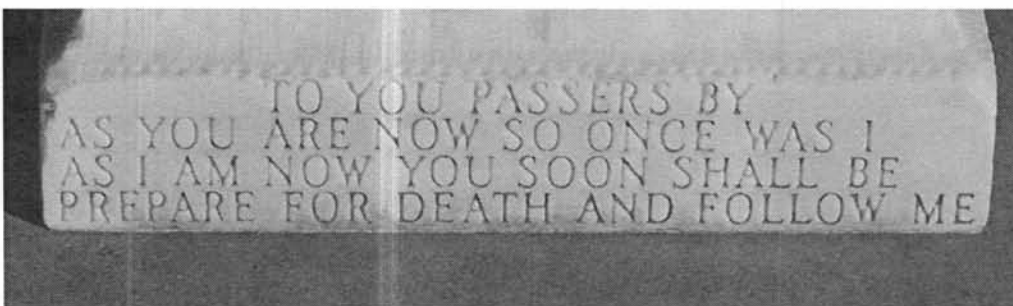


Supposedly for an individual who sat down on a can of nitro-glycerin and... (from same source as above).

\*\*\*\*\*

#### Sources and further reading ( \* = can be found online in Google Books):

- Shushan, E. R., Grave Matters: A Curious Collection of 500 Actual Epitaphs. (New York: Ballantine Books, 1990).
- Fairley, W., Epitaphiana: The Curiosities of Churchyard Literature. (Samuel Tinsley, 1873).\*
- The Magazine of History with Notes and Queries, Volume 19. (W. Abbatt, 1914).\*
- Perkins, Frank A., Handbook of Old Burial Hill, Plymouth, Massachusetts. (Massachusetts: A. S. Burbank, 1902).\*
- Briscoe, John Peter, Gleanings from God's Acre: A Collection of Epitaphs. (London: Hamilton, Adams, & Co., 1883).\*
- Crissman, James K., Death and Dying in Central Appalachia. (University of Illinois Press, 1994).



The epitaph shown is on the tombstone of Rivers Banks at Eastside Cemetery in Hutchinson. It is a similar version of the first one in Stephanie's article. Stephanie and I both have cemetery blogs. You can visit them at <http://southerngraves.blogspot.com/> ————— and ————— <http://digitalcemeterywalk.blogspot.com/>



## Publication Price Changes

At the January Board meeting our publication inventory was reviewed and the board voted on price changes to move the inventory. Some of the materials are getting old and are beginning to show it.

Our goal is to work with volunteers to digitize the material for future updating and printing. All of our publications need a better introduction and pertinent details, like the location of the original records. Volunteers wishing to help with this project will be mailed a publication and will agree to complete the assignment within a specified amount of time. The publication will be theirs to keep. If you are interested in helping with this please send an email to us at [RenoCoGenSoc@gmail.com](mailto:RenoCoGenSoc@gmail.com).

### Here are the price changes:

Births: Recorded Early Births of Reno Co. 1890-1911 & Index - Was \$17.00 - Now \$5.00

Cemetery Book of Reno Co. 1865-1978 [\$23.00] **SOLD OUT & online**

Cemetery Records of North Inman, Superior Twp, McPherson Co. - Was \$7.00 - Now \$5.00

Deaths: Recorded Deaths of Reno Co. 4 volumes, 1890-1911 & Index - Was \$17.00 - Now \$5.00

Homestead Records of Reno Co. Name, location & file date 1875-1945 - Was \$21.50 - Now \$10.00

Marriages of Reno County 1872 - 1913 - Was \$23.00 - Now \$15.00

Naturalization Records of Reno Co. Index 1875-1955 - Was \$12.50 - Now \$8.00

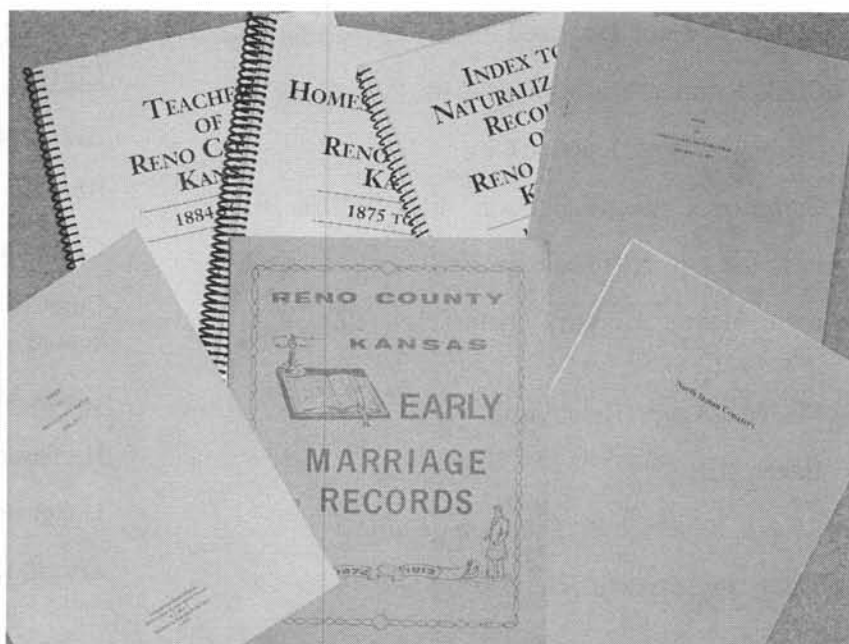
Teachers of Reno Co. 1884-1966. Color map included - Was \$27.50 - Now \$15.00

Some items are limited in quantity, like the birth records. First come, first served!

### No change in pricing for:

*The Sunflower* back issues - CD Only.

CD 1: 1979-1993 | CD 2: 1994-2009 \$5 ea



## Alumni of Hutchinson High School

From the 1920 issue of the Allagaroo

Typed by Sally Eubanks

### Class of 1894

Fontron, John F., Hutchinson

Brehm, John S., New York

Thompson, Albert, Hutchinson

Meyer, Marie, Hutchinson – Mrs. M. J. Madden

Mathews, Lynette, Hutchinson

Leidigh, Anna, Los Angeles, Calif. – Mrs. J. W. Burns

Van Zent, Helen M., Kansas City, Mo. – Mrs. Archie Ray

Eccles, Eveline, Hutchinson

Harbeson, Minnie, Topeka

Palmer, Minta

Colladay, Edward, Washington, D. C.

Dickey, Jennie, Hutchinson – Mrs. A. W. O'Brien

Zinn, Mary, Los Angeles, Calif. – Mrs. W. P. Stormont

Penney, Bessie, Hutchinson – Mrs. J. F. Fontron

### Class of 1895

No Class. Course lengthened.

### Class of 1896

Anderson, Sybil. Deceased

Clark, Beatrice, Greensburg – Mrs. F. B. Coree

Crisman, Mabel, Junction City

Carpenter, Chloe, Hutchinson – Mrs. William Briggs

Eastman, Grace, Hutchinson

Irwin, Mayme, Corpus Christi, Texas – Mrs. A. W. Davis-  
son

Madden, Agnes, Hutchinson

Baker, Bert

Leidigh, Frederick R., San Diego, Calif.

Thompson, Percy R., Hutchinson

Wise, Marguerite, Texas – Mrs. Will Sutton

### Class of 1897

Butler, Ella

Smith, V.

Child, Flossie

Chrisman, Dorothy, Hutchinson

Caffrey, Vera, (married)

Dade, Mary, Hutchinson – Mrs. William Kelly

Flodin, Bertha, Pensacola, Fla. – Mrs. J. V. McNeil

Gary, Guthra, Rising Sun, Ind. – Mrs. Hugh Harris

Gary, Ida, Rising Sun, Ind. – Mrs. William Johnson

Hardcastle, Flora, Hutchinson

Hess, Kathleen, Hutchinson

Irwin, Lida, Chicago – Mrs. Herbert Taylor

Leidigh, Alma, Hutchinson – Mrs. H. A. Sawyer

Vaughan, Gem, Oklahoma

Briggs, Clarice, Seattle, Wash.

Fontron, Louis, Hutchinson

Lewis, Howard, Hutchinson

Flodin, Carl, Hutchinson

Lauer, Howard

Pargeter, John, Hutchinson

### Class of 1898

Alexander, Grace, Hutchinson – Mrs. G. C. Tipton

Bennett, Helen, Chicago, (married)

Carriss, Lillie, Frankfort, Ky.

Carey, Edith, Hutchinson – Mrs. Allen Winchester. De-  
ceased

Gibbs, Mabel, Alene, Okla. – Mrs. Allen Brown

Harbeson, Jessie, Meriden, Kansas – Mrs. R. A Taylor

Hoagland, Nellie, Hutchinson

Jewell, Helen, Hutchinson – Mrs. Frank Battise

Purcell, May Hart, Oklahoma – Mrs. R. H. Thompson  
 Leslie, Loren, Kansas City – Mrs. Fred Heryer  
 McVay, Myrtle, Hutchinson – Mrs. John Rau  
 Miller, Myrtle, Hutchinson  
 Myers, Mabel. Deceased  
 Pinyerd, Lettie, Oklahoma City, Okla. – Mrs. Pollak  
 Pollard, Imogene, Hutchinson  
 Pafford, Clarice, Hutchinson – Mrs. Clarice Snyder  
 Pugh, Helen M., Berkeley, Calif. – Mrs. Sam Hughes  
 Sympson, Dora, Topeka – Mrs. Fred Kath  
 Smith, Grace, Des Moines, Iowa – Mrs. E. A. Hester  
 Taylor, Edith, St. Louis, Mo.  
 Watson, Lella, Santa Anna, California  
 Williams, Kate, Haven, Kansas

**Class of 1899**

Lowry, Blanche, Prescott, Ariz. (married)  
 Handy, Inez, Hutchinson – Mrs. A. H. Schlaudt  
 Quarterman, Grace, Hutchinson  
 Colladay, Chas., Hutchinson  
 Brown, Nellie, Telaquah, Okla. – Mrs. Bert Wright  
 Graves, Daisy, Arlington – Mrs. Robert Taylor  
 Smith, Nettie, Pittsburg, Kansas – Mrs. May Stephany  
 Penny, Louise, Hutchinson – Mrs. Oscar A. Peterson  
 Flodin, Nellie, Brooklyn, N. Y. – Mrs. Geo. Schryber  
 Morse, Laura, San Diego, Calif. – Mrs. Will Price  
 Condon, Edan, Hutchinson – Mrs. Walter Kirkpatrick  
 Roberts, Chester, Seattle, Wash  
 Rozelle, Charlnie, California (married)  
 Phillips, Millicent, Hutchinson  
 Schlaudt, Arthur, Hutchinson  
 Word, Grace, Hutchinson  
 Champion, Lillian, Hutchinson (married)

Eddie, Jessie, Hutchinson – Mrs. Frank Green  
 Constant, Nina, Hutchinson – Mrs. W. P. Kinkel  
 Leidigh, Aarthur, College Station, Texas  
 Smith, Mabel, Dallas, Texas  
 Wime, Hester, Wichita, Kansas  
 Decker, Bessie, Turon – Mrs. John Potter

**Class of 1900**

Pafford, Bernice, Stafford  
 Stallman, Elizabeth, Hutchinson  
 Colladay, Jennie, Washington, D. C.  
 Lauer, Herbert, Hutchinson  
 Burns, Edna. Deceased  
 McMillan, Mamie  
 Ogle, Ada, Santa Fe, N. M. – Mrs. Carlos Vierra  
 Lewis, Ida, Chicago, Ill. – Mrs. George Glazier  
 Moore, Lola, Kansas City, Mo.  
 Miller, Nellie. Deceased  
 Anderson, Midgie, Hutchinson  
 Lewis, Arthur, Hutchinson  
 Winans, Louise, On the stage  
 Hutchinson, Nettie, Oklahoma City – Mrs. Harvey Garrison  
 Fulton, Charles, Hutchinson  
 Botkin, Clyde, Topeka  
 Dean, Grace, Topeka  
 Powell, Milton  
 Ladd, Ida, Kansas City, Mo.  
 Forney, Fred, Woodman, Colo.  
 Nelson, Minnie, Hutchinson  
 Sidlinger, William, Hutchinson  
 Stratton, Maude, Hutchinson – Mrs. Maude Fain  
 Scheble, Elma, Hutchinson – Mrs. Chas. Colladay  
 Kimey, Jennie, Wichita – Mrs. John Moore. Deceased  
 Perkins, Margaret, Hutchinson – Mrs. Charles Briggs



### **Dr. S. S. Todd**

Dr. S. S. Todd, whose death in Kansas City on the 12<sup>th</sup> and who had many friends and was well known by the profession in this part of the state.

His sudden death was no doubt precipitated by the fatalities that immediately preceded his demise. His wife died on the 5<sup>th</sup> of October, Miss Minnie Williams his wife's sister, died two days later, Charles Williams, his wife's brother, died on the 3<sup>rd</sup> of March, last. All of pneumonia. Chas. Williams was a nephew and Mrs. Todd and Miss Williams were nieces of Mrs. W. A. Austin of this city. Dr. Todd was the founder of the Kansas City Medical College, and was its president for thirteen years. He was elected a member of the London Medical College, was surgeon of the 6<sup>th</sup> Cav. Vol. Inf., during the war and is the author of several valuable medical works.

*Reno County Globe October 22<sup>nd</sup>, 1899 page # 3 Column # 3*

### **Charles Bloom**

One of Hutchinson's Best Known Men a Pioneer of 1876

Charles Bloom died at 10 o'clock yesterday morning. For forty years he has been an actual business man of Hutchinson and was deeply and actively interested in all the pertained to the city and its success.

He was associated with some of the most prominent men of the city in many enterprises, all of which had for their main end the welfare and development of his city.

He founded the first wholesale grocery in Hutchinson and its name, the C. Bloom Grocery company, was known to every driver of freight wagons in the early days of Kansas' growth.

No man of the present business associates of Hutchinson was better or more favorably known than Mr. Bloom. His ambition was always directed towards that which raised the standard of his city and the things he helped accomplish were many.

He was born in Germany, June 24, 1846, and was brought to the United States when a boy of nine. His first home in America was Tiffin, Ohio.

He was married to Miss Margaret West on September 7, 1871, and to the union was born four children, H. C. Bloom, R. H. Bloom and Mrs. Delos V. Smith, all of Hutchinson, and Earnest, who died in infancy. The funeral service will be held at the home, two and one-half miles west of the city, at 2 o'clock Monday afternoon. Interment will be at Eastside cemetery.

*Hutchinson Gazette, January 30, 1916*

### **Death of W. J. Cross**

Aged Pioneer of Reno County Died Yesterday at His Home

Washington J. Cross, aged 75, died at his home, No. 512 North Jackson street, at noon yesterday. Death was due to old age and infirmity. Mr. Cross is survived by his wife and three children, Mrs. C. C. Crow, who is in Texas; Miss Via Cross, a student at the University of Kansas, at Lawrence, and E. W. Cross, of St. Louis, Mo., all of whom are presently at home.

Mr. Cross was a retired farmer and an old resident of Reno county. Funeral service will be held at the Adventist church, corner of Sixth and Bismark streets, at 2:30 o'clock Thursday afternoon, Elder Bringle will preach the funeral service. Burial will be at Eastside cemetery.

*Hutchinson Gazette, Wednesday Morning, January 26, 1916*

LINKS	PUBLICATIONS - NEW PRICES!!!
-------	------------------------------

**Shared by Phyllis Long & Bill Rexroad**

Search Over 11,266,000 Old New York State Historical Newspaper Pages:

This link is the front page. Click on enter.

[http://www.fultonhistory.com/Flash\\_ok.html](http://www.fultonhistory.com/Flash_ok.html)

This is the second page where you do the search.

<http://www.fultonhistory.com/Fulton.html>

[www.usafamilytree.com](http://www.usafamilytree.com)

**Do you have a suggestion for a web site that we can share with our members?**

**Send it to: [RenoCoGenSoc@gmail.com](mailto:RenoCoGenSoc@gmail.com)**

**Forgotten Settlers of Kansas Certificate Program**



Descendents of early Kansans are encouraged to submit applications for the following type of certificates:

- **Territorial** - ancestor lived in Kansas prior to 1/29/1861
- **Pioneer** - ancestor lived in Kansas between 1/29/1861 - 12/31/1880
- **Early Settler** - ancestor lived in Kansas between 1/1/1881 - 12/31/1900

Following certification, with permission granted, the application and pedigree chart will be printed in a Forgotten Settlers of Kansas publication. Applications and proof materials are contributed to the manuscript section of the Kansas State Historical Society's Center for Historical Research.

The Kansas Council of Genealogical Societies, Inc. is an umbrella organization for Kansas genealogical and historical societies, as well as interested individuals.

KCGS: <http://skyways.lib.ks.us/genweb/kcgs/>



Births - Recorded Early Births of Reno Co. 1890-1911 & Index	\$5.00
Cemetery Book of Reno County, 1865-1978	SOLD OUT
Cemetery Records of North Inman, Superior Township, McPherson County, KS	\$5.00
Deaths - Recorded Deaths of Reno County 4 volumes, 1890-1911 & Index	\$5.00
Homestead Records of Reno County Name, location & file date 1875-1945	\$10.00
Marriages of Reno County, 1872 - 1913	\$15.00
Naturalization Records of Reno County Index 1875-1955 filed at courthouse	\$8.00
Teachers of Reno County, 1884-1966	\$15.00
<i>The Sunflower</i> Back Issues - CD ONLY CD 1: 1979 to 1993   CD 2: 1994 to 2009	\$ 5.00 ea
Harper's Weekly 1888 - City of Hutchinson - featured supplement - PDF on CD	\$5.00
Plat Book of Reno Co. 1902 - PDF on CD	\$10.00
Postage & Handling included in price Kansas residents add 7.05% sales tax <b>Member discount—\$1 each item</b>	

**To order a publication - cut and return to:**

RCGS - P. O. Box 5

Hutchinson, KS 67504-0005

Name: \_\_\_\_\_

Address: \_\_\_\_\_

City: \_\_\_\_\_

State: \_\_\_\_\_ Zip: \_\_\_\_\_

Email: \_\_\_\_\_

Circle or highlight the items you are ordering

Total amount enclosed: \$ \_\_\_\_\_

Make checks payable to Reno Co. Gen. Soc.

*Members receive \$1 discount on publications*

**RCGS MEMBERSHIP****Member Benefits**

- Four [4] issues of our quarterly "*The Sunflower*" - Published in Feb., May, Aug., & Nov.
- Free Queries in *The Sunflower* [limit 50 words]
- Monthly eNews – communicating meeting review & reminders, time sensitive data and other informative news.
- 11 monthly programs - both educational and fun
- 1 free hour of research
- Vote in annual election
- Surnames for Reno County ancestors posted on RCGS website
- Surname research profile [outside of Reno County] posted on RCGS website
- Discount on publications [\$1.00 per publication]
- List and link on RCGS website to member website [genealogy related]

**Level 1 - \$12 Basic****Level 2 - \$15 Community Connection**

Level 2 memberships support our community connection projects, such as, but not limited to: free genealogy workshops, books or microfilm placed in the library, marking an unmarked grave and working with other organizations to promote genealogy.

Membership requests received after August are applied to the following year and a complimentary November quarterly is mailed.

**Complete for New, Renewal or Gift Memberships**

Name: \_\_\_\_\_

Address: \_\_\_\_\_

City: \_\_\_\_\_

State: \_\_\_\_\_ Zip: \_\_\_\_\_

Email: \_\_\_\_\_

Reno County Surnames: \_\_\_\_\_

\_\_\_\_\_

**Thank you for supporting RCGS!****RESEARCH CENTERS****RCGS Research Services**

RCGS offers 4 Options - see our website for details

- 1) One record search for 5 names
- 2) *The Sunflower* article copies
- 3) Basic one-hour research service
- 4) Cemetery Photos

**Hutchinson Public Library**

901 N. Main

Hutchinson, KS 67501

620-663-5441

Mon - Fri 9:00 am to 9:00 pm

Sat 9:00 am to 6:00 pm

Sun 1:00 pm to 5:00 pm

[www.hutchpl.org](http://www.hutchpl.org)**Hutchinson Family History Center**

518 E 43rd Street

Hutchinson, KS 67502

620-665-1187

Tues 1:00 pm to 8:30 pm

Wed 9:30 am to 5:00 pm

Thur 9:30 am to 5:00 pm

**Kansas State Historical Society**

6425 SW 6th Street

Topeka, KS 66615-1099

785-272-8681

[www.kshs.org](http://www.kshs.org)**Reno Co. Historical Society & Reno Co. Museum**

100 S. Walnut

Hutchinson, KS 67501

620-662-1184

Tues to Sat 9:00 am to 5:00 pm

Sun 1:00 pm to 5:00 pm

[http://www.renocountymuseum.org/Home\\_Page.php](http://www.renocountymuseum.org/Home_Page.php)



## SURNAME INDEX

Not Indexed:

Inside Front Cover, TOC, Alphabetical list on 10-15

Alexander, 22  
 Anderson, 22, 23  
 Baker, 22  
 Banks, 20  
 Bennett, 22  
 Bloom, 24  
 Botkin, 23  
 Bowman, 4  
 Brehm, 22  
 Briggs, 22  
 Briscoe, 20  
 Brown, 8, 23  
 Brychta, 16  
 Burns, 23  
 Butler, 22  
 Caffrey, 22  
 Carey, 22  
 Carpenter, 22  
 Carriss, 22  
 Champion, 23  
 Child, 22  
 Chrisman, 22  
 Clark, 22  
 Colladay, 22, 23  
 Condon, 23  
 Constant, 23  
 Crisman, 22  
 Crissman, 20  
 Cross, 24  
 Crow, 24  
 Dade, 22  
 Dean, 23  
 Decker, 23  
 Dickey, 22  
 Eastman, 22  
 Eccles, 22  
 Eddie, 23  
 Fairley, 18, 20  
 Flodin, 22, 23  
 Floren, 4  
 Fontron, 22  
 Forney, 23

Fulton, 23  
 Gary, 22  
 Gaumaer, 9  
 Gibbs, 22  
 Glotfelty, 8  
 Graves, 23  
 Handy, 23  
 Harbeson, 22  
 Hardcastle, 22  
 Hess, 22  
 Hoagland, 22  
 Hutchinson, 23  
 Irwin, 22  
 Janney, 4  
 Jewell, 22  
 Johnson, 4, 18  
 Kimey, 23  
 Ladd, 23  
 Lauer, 22, 23  
 Leidigh, 22  
 Leslie, 23  
 Lewis, 22, 23  
 Lincecum, 18  
 Long, 25  
 Lovin, 9  
 Lowder, 19  
 Lowrey, 23  
 Madden, 22  
 Mathews, 22  
 McDowell, 9  
 McMillan, 23  
 McVay, 23  
 Meyer, 22  
 Miller, 23  
 Moore, 23  
 Morse, 23  
 Myers, 23  
 Nelson, 23  
 Ogle, 23  
 Pafford, 23  
 Palmer, 22  
 Pargenter, 22  
 Penney, 22  
 Penny, 23  
 Perkins, 20, 23  
 Phillips, 23  
 Pinyerd, 23

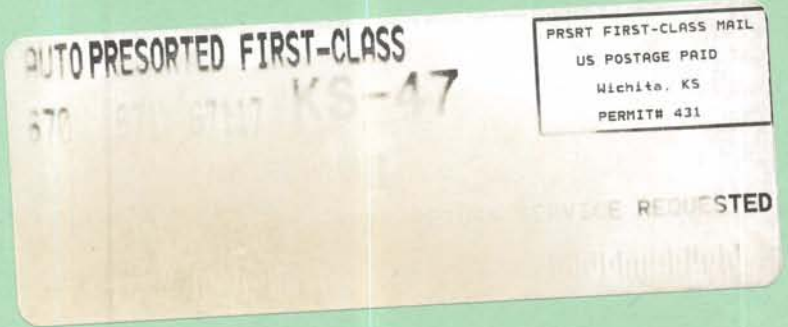
Pollard, 23  
 Powell, 23  
 Pugh, 23  
 Purcell, 23  
 Quarterman, 23  
 Rexroad, 25  
 Roberts, 23  
 Rozelle, 23  
 Rudesill, 10  
 Rump, 16  
 Salter, 19  
 Scheble, 23  
 Schlaudt, 23  
 Schultz, 9  
 Scott, 4  
 Shultz, 8, 9  
 Shushan, 18, 20  
 Sidlinger, 23  
 Sith, 5  
 Smith, 22, 23, 24  
 Stallman, 23  
 Stratton, 23  
 Sympson, 23  
 Taft, 17  
 Taylor, 22, 23  
 Thompson, 22  
 Todd, 24  
 VanZent, 22  
 Vaughan, 22  
 Wall, 4, 8  
 Watson, 23  
 West, 24  
 Williams, 9, 23, 24  
 Wime, 23  
 Winans, 23  
 Wise, 22  
 Word, 23  
 Young, 16  
 Zinn, 22

**Moving? Please notify us of your new mailing address. *The Sunflower* is NOT forwarded.**



RENO COUNTY GENEALOGICAL SOCIETY  
P. O. BOX 5  
HUTCHINSON, KS 67504-0005

RETURN SERVICE REQUESTED



M-53 Dec-09  
McMannis, Darren J.  
P O Box 387  
North Newton, KS 67117-0387

Be sure to visit our blog for events, news and the photo of the week

Share Report Abuse Next Blog» Create Blog Sign In



# Reno County Genealogical Society

*Welcome to Reno County, Kansas.*

FRIDAY, FEBRUARY 5, 2010


## Photo of the Week

Corn Fountain  
Located on the Kansas State Fairgrounds  
Sent to the Word's Fair in Chicago



### RCGS Events & News Blog

Preserving Our Yesteryears!



RCGS

The Reno County Genealogical Society of Hutchinson, Kansas was founded in 1978 for the purpose of fostering genealogical research, promoting the exchange of information and encouraging the deposit of genealogical and historical materials in established libraries and archives.

Done Internet 100%