



# THE SUNFLOWER

Reno County Genealogical Society

P. O. Box 5

Hutchinson, Kansas 67504-0005



Volume 31, No. 4

November 2009

The Reno County Genealogical Society of Hutchinson, Kansas was founded in 1978 for the purpose of fostering genealogical research, promoting the exchange of information and encouraging the deposit of genealogical and historical materials in established libraries and archives. Membership in the Reno County Genealogical Society is open to anyone interested in genealogy or local history. Dues are Level 1: \$12.00 or Level 2: \$15.00 per year, per couple from January 1 to December 31 each year. Meetings are held the third Monday of each month in the Auditorium of the Hutchinson Public Library, 9th and Main, 7:00 – 8:45 P. M.

## 2009 Board Members

### RCGS Officers

President	Ruth Filbert
Vice President *	Karen Burgess
Treasurer	Kendall Griggs
Recording Secretary	Sally Eubanks
Corresponding Secretary	Sheila Sage

[\* Includes Program & Membership Chair]

### RCGS Committees

Historian	Rita Lingg
Kansas Room Visitor Book	Sally Eubanks
Obituary Coordinator	Kathleen Dankanyin
Publication Sales	Sandy Wedman
Quarterly & eNews Editor	Gale Wall
Research Chairman	Rita Lingg
Web Coordinator	Gale Wall

### RCGS Email:

RenoCoGenSoc@gmail.com

### RCGS Web Site:

<http://rootsweb.com/~ksregs>

NOTE: Rootsweb.com is now on the Ancestry.com platform but this url still works. It will take you to this location: <http://www.rootsweb.ancestry.com/~ksregs/>

**The Sunflower** is published quarterly by the

Reno County Genealogical Society

P. O. Box 5 - Hutchinson, KS 67504-0005

ISSN 1048 - 048X

Editor: Gale Stafford Wall, Hutchinson, KS

The Sunflower is indexed in the Periodical Source Index [PERSI] of the Allen County Public Library Foundation

*The Sunflower* welcomes your articles and photographs on your Reno County ancestors.

- Email to: RenoCoGenSoc@gmail.com
- Mail to: RCGS - P. O. Box 5 - Hutchinson, KS 67504-0005
- Assistance is available in formatting your submissions
- Submissions are subject to editing and space availability

The Reno County Genealogical Society is a member of the Federation  
of Genealogical Societies and the Kansas Council of Genealogical Societies.

### In This Issue

President's Message   2009 Raffle Winner	88
News & Notes   RCGS Programs	89
Editor's Note   New Members   On The Cover	90
2010 Budget	91-92
Kansas State Fair Genealogy Winners   Family History Month Photo Exhibit	93
2009 Annual Potluck	94-95
News from the Reno County Museum	96-97
Photos & Postcards	98-99
Eminent Men of the State of Kansas	100-102
Beginning Genealogy Workshop - Fall 2009	103
Talking Tombstones	104-105
Alumni of Hutchinson High School	106-107
Obituaries: Ardery, Baggs, Burrell, Cox, Craig, Davis, Holland, Labuhn, Towne	108
Links   Forgotten Settlers of Kansas   Publications Order Form	109
RCGS Membership   Research Centers	110
Surname Index	111

\*\*\*\*\*  
 ★  
 ★  
 ★  
 ★  
 ★  
 ★  
 ★  
 ★  
 ★  
 \*\*\*\*\*

**It's time to pay your 2010 dues.**

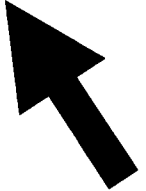
**Please mail your dues before December 31st.**



We've used two services to shorten the URL of our web address

<http://tinyurl.com/RenoCoGenSoc>

<http://bit.ly/RenoCoGenSoc>





## President's Message

Congratulations go to the following Kansas State Fair winners: Harold Balzer entered class #885, Complete Genealogy - unpublished and won a blue ribbon for his two notebooks of family history. Harold also won \$25 and a Rosette for having the Best Documented Genealogy of all entries. (The Reno County Genealogical Society sponsors the Best Documented award.) Margaret Childs entered class #886, Complete Genealogy - published (Bound Book) and won a red ribbon on her family history entry at the State Fair. Claudia Glass of Hutchinson entered class #888, Computer Generated Narrative and won a red ribbon.

Congratulations go to Rita Lingg for winning the Genealogy Kit raffle drawing at the October meeting and June Greathouse for winning the 1 Year World subscription to Ancestry.com and to the other winners. Thanks to all that attended.

I have asked that my name not be placed on the list of nominations for 2010 officers. I want to thank Karen Burgess for her support this past year. I have been absent from several meetings because of family sport activities and Karen has taken over for me. Will someone step forward and volunteer their ser-

vices for the position of President?

There were not as many at the workshops at the Kansas State Fair, but with an average attendance of around 25 people we had a good crowd. We are considering a plan to offer the workshops on both Saturdays and on a Wednesday next year. Thanks to Karen who presented two programs, and Bill Rexroad for furnishing the sound equipment and all who helped with setting up on the days Bill could not be present. Also, a special thanks to the members who helped at the workshops.

Many members gave their support by giving a program, attending the board and general meetings and being on committees. Kathleen, thanks for bringing order to the obituary file and your many drives with Gale as she went to the cemeteries in the county. Last, but not least, a big thank you to Gale for her effort in editing *The Sunflower*, and the Reno County Genealogical Web Site, Blog and many other contributions.

Ruth

## 2009 Raffle Winner

Congratulations to Rita Lingg! She won the raffle.

Genealogy Research Kit valued at \$200.00

Thanks to everyone that helped us sell 270 tickets!



## News & Notes

- We enter 2010 with no society president. This means extra work for those already serving. Please consider supporting your society and volunteer. There are many ways you can help. Just ask!
- Can you believe I have an issue of our quarterly with no cemetery article? It was hard to cut it from the list in order to bring you timely coverage of recent events. I was able to include one picture on the back cover!
- Your Reno County ancestor biographies and photos are requested for future issues of *The Sunflower*. You can feature one person or a family unit. Please email Gale Wall with questions at RenoCoGen-Soc@gmail.com.
- Check out the great programs lined up for 2010. We have a wide variety of topics that should be of interest to just about everyone. We hope you will attend!
- Read about the grant we received for our community connections cemetery sign project - on our blog!

### RCGS 2009 Programs

December - no meeting.

\*\*\*\*\*

### RCGS 2010 Programs

#### 1/18 Genealogy Traps

- Traps to avoid in your research

#### 2/15 Re-burying A Lost Ancestor

- Hear the journey of locating a lost ancestor

#### 3/15 Genealogy Toolbox

- Research toolbox: forms, magazines, newsletters

#### 4/19 Tracking Your Roots

- Map Resources

#### 5/17 Coming To America

- Immigration Timeline

#### 6/21 Cemetery Art & Symbolism

- Beauty found in the cemetery.

#### 7/19 Filling in the Blanks

- Missing Census Resources

#### 8/16 Family News

- Newspaper Research

#### 9/20 Military Heritage

- Record Resources

#### 10/18 Annual Potluck

- Delos Smith Ctr
- Bring a covered dish and show & tell item

#### 11/15 What's in a Name?

- Nicknames & short names

#### 12/13 Board meeting only

**Bring a friend  
and join us!**

## Editor's Note

As we close out 2009 plans for 2010 are already in place with some being tweaked. Our society will see changes in 2010 and that information will be shared in the weeks ahead.

I would like to personally thank each of you that volunteered this year. If you helped with a meeting or program, typed or submitted material for this quarterly, the photo exhibit or our web site, served on the research team or other committee's then you are responsible for our success this year.

On a personal note, earlier this summer I became an Army Mom. Having worked as a Corrections Officer at the Hutchinson Correctional Facility for over three years, Clayton decided to enlist in the Army. This was something he had been thinking about for several years.

I have gone through many emotions during these last few months. Having my son enlist while we are fighting two wars leaves me both proud and anxious. He graduated basic combat training at Ft. Knox, KY on November 5th. He is now at Ft. Sill, OK for advanced individual training. His MOS is Fire Support Specialist. I trust that my faith will sustain me in the days ahead.



**Rodney Clayton Wall**

## New Members

Gonzalez, Angela - Maiden, NC

Raddon, Charlene - Sandy, UT

# WELCOME!

**New members - Do we have your email?**

**Don't miss our monthly eNews!**

## On The Cover

1929 Flood

Hutchinson, KS

Photograph courtesy of the Reno County Museum



## 2010 Budget

The board approved the following budget for 2010 at our November meeting. Hearing no objections from our membership, by December 31, 2009, this budget will stand approved for 2010. If you have any questions please contact a board member [listed on the inside front cover].

<b>2009 Previous Balance Forward [budgeted]</b>		<b>\$ 1,000.00</b>
<b>Income</b>		
Membership - Basic	[75 x \$12]	\$ 900.00
Membership - Community Connection	[25 x extra \$3]	\$ 75.00
Donations [tax deductible]		\$ 50.00
Can Money @ Mtgs		\$ 25.00
Research		\$ 250.00
Interest on CD		\$ 200.00
Surplus xfer from pub gift		\$ 150.00
Raffle		\$ -
Grants		\$ 100.00
Other Income [Q sales, etc.]		\$ -
<b>Previous balance &amp; income</b>		<b>\$ 2,750.00</b>
<b>Expenses</b>		
<b>President</b>		\$ -
		\$ -
<b>VP</b>		
Monthly door prizes		\$ 50.00
Membership	[packets & postage]	\$ 50.00
Programs	handout 100	\$ 100.00
		<b>\$ 200.00</b>
<b>Treasurer</b>		
	KS Retailers Sales Tax	\$ 50.00
	Postmaster Box Fee	\$ 44.00
	Non Profit Fee	\$ 40.00
	KCGS Dues	\$ 15.00
	FGS Dues	\$ 45.00
		<b>\$ 190.00</b>
<b>The Sunflower Quarterly</b>		
	x4 Printing [150 x .90]	\$ 550.00
	x4 Postage [150 x 1.20]	\$ 800.00
	Postage Return Acct	\$ 25.00
	Other [mat. copies/lnk]	\$ 20.00
		<b>\$ 1,395.00</b>
<b>Web Site</b>		
	Online album	\$ -
	Web hosting	\$ -
	Domain registration	\$ -
	Material/copy/other	\$ 10.00
		<b>\$ 10.00</b>

Budget cont'd on next page

## 2010 Budget Cont'd

<b>Research</b>		
	Envelopes	\$ 5.00
	Copy reimbursements	\$ 20.00
funds ret'd after deposited	Refunds	\$ -
		<b>\$ 25.00</b>
<b>Other [Comm &amp; Events]</b>		
OTHER		\$ -
Community Connection Project[s] OTHER	[books, film, etc]	\$ 50.00
Community Connection: Cem Sign	260 [+ 130 donation]	\$ 250.00
Community Connection: Beg Gen	1 workshop	\$ 100.00
Community Connection: Photo Exhibit		\$ 100.00
Raffle expenses		\$ -
Historian		\$ -
Recording Secretary		\$ -
Correspondence Secretary		\$ -
Obit Coordinator		\$ 25.00
Kansas State Fair [inc KCGS grant]	Handouts - ALL	\$ -
Kansas State Fair - Best of Show	Sponsorship	\$ 25.00
Family History Month	Vol. Awards / Prizes	\$ 50.00
Publicity: brochures, posters, etc	Brochures [700]	\$ 200.00
Other - Special Projects / Misc needs	Copies, Printing, etc.	\$ 25.00
General Postage Acct - <b>All except M'ship</b>	<b>&amp; Quarterly</b>	\$ 100.00
		<b>\$ 925.00</b>
<b>TOTAL EXPENSES</b>		<b>\$ 2,745.00</b>
<b>Check Book Balance [income less expenses]</b>		<b>\$ 1.00</b>

If you have any questions regarding a line item please contact a board member at [RenoCoGenSoc@gmail.com](mailto:RenoCoGenSoc@gmail.com)



## Kansas State Fair Genealogy Winners

885 Genealogy, unpublished: Harold Balzer

886 Genealogy, published: 1st Louise Nance, 2nd Margaret Childs

888 Computer Generated Narrative: 1st - no winner, 2nd Barbara Pendleton, 3rd Claudia Glass

890 Best Documented, all entries: Harold Balzer

**Congratulations to RCGS winners Harold Balzer and Margaret Childs.**

Approximately 90 people attended the genealogy classes offered over a 4 day period.

## Family History Month Photo Exhibit

Our photo exhibit entitled, Faces & Places of Reno County, was well received. Thank you to all that contributed photos: RCGS members Sally Eubanks, Nancy Moore, Karen Burgess, Kendall Griggs, Gale Wall, LaDonna Alford, Harold Balzer, Diane Lewis, Kathleen Dankanyin, Rebecca Head & Phyllis Long. Our special thanks to the Reno County Museum and Steve Conard for providing photos from their collections.

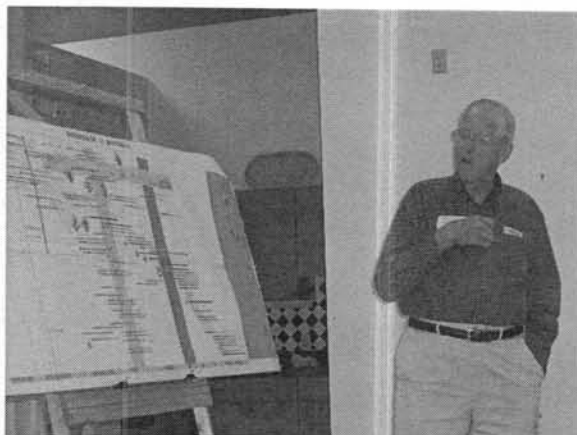


### 2009 Annual Potluck

Thanks to everyone that attended the 2009 potluck. We had a fun-filled evening with GREAT food, door prizes and show & tell. It's nice to have time to get to know our fellow members during this social time. We encourage anyone who hasn't attended to mark your calendar for 2010 and join us for an evening of fun.



**Sally Eubanks**



**Show & Tell**

[L] Bill Rexroad

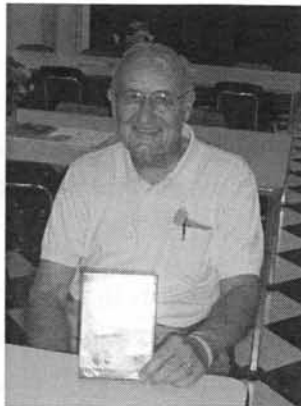
[R] June Winslow



### Door Prize Winners



1 Year subscription  
World Ancestry.com,  
\$300 value - June  
Greathouse



RootsMagic 3 Soft-  
ware, \$30 value - Jim  
Stoecklein



Family Atlas Software, \$30  
value - Garland Longhofer



Personal Historian  
Software, \$30 value -  
Rebecca Head



No Pictures: Favorite Ancestor Sto-  
ries. See Sally & Jo in other photos!



Photo Tree, \$20 value  
- Connie Bredfeldt



**Jo Longhofer**

### Show & Tell

[L] Jo Longhofer

[R] Kathleen Dankanyin



## News from the Reno County Museum

Every cloud has a silver lining, and the Reno County Museum (RCM) has certainly experienced the highs and lows of this old adage in the past six months. Hi, my name is Jamin Landavazo, and I came on staff at RCM as the Chief Curator in March of this year. Little did any of us know, at that point, the challenges that this museum would soon encounter. The museum has met several of those challenges during the past six months, all of which leave us excited about the months and years to come, and about collaborating with vibrant organizations like the Reno County Genealogical Society.

The Reno County Historical Society, which governs the Reno County Museum and its sister museum, the Kansas Underground Salt Museum (KUSM), started a strategic planning process in January of 2009 to create a five year plan for each museum. Part of that plan for RCM included an evaluation of our aging buildings. RCM's two main buildings – the former Kline Insurance Company building and the former Rosemont boarding house – were constructed in the early part of the 20<sup>th</sup> Century, and were joined to create a space for the museum when it opened its doors in 1986. A quick walk through of the buildings in May of 2009 by an architect revealed two issues that needed to be addressed. The air conditioner in the Kline building, which houses all of the public areas of the museum, including the exhibit galleries, the research room, the conference room and the Oodleplex kids play area, was out and would need a significant repair in order to work again. Additionally, it was discovered that the area where the archives and museum collections are stored was overloaded with weight, which was causing the floors to sag and the walls to crack.

These discoveries led the staff and board to make the difficult decision to close the museum for the summer. This gave us the opportunity to address those issues, as well as look to the future and dream big about the types of things we would like to accomplish, the services we would like to provide for the community, and the steps we need to take to make our dreams come true.

On September 29<sup>th</sup>, we reopened as a revitalized organization. We are pleased to say that we have spoken with several organizations about fixing our air conditioning to make sure that we are fixing it in the most responsible and long-lasting way possible. Though the actual work is pending examination and a report, we feel confident that by the time we need it next spring, it will be up and running again. We also feel that closing the museum was a good idea; with temperatures upwards of 80-90 degrees in our galleries during the summer, it was not a good environment for our guests or our artifacts. The issue with our air conditioning has not affected our heat, so the winter months should be quite cozy here at the museum.



We also took this opportunity to relieve some of the pressure off of the floors in our collections storage space by moving 100-125 of our heaviest artifacts to an offsite storage location. This took about 2 tons worth of weight off of our floors, allowing us all to breathe easier. We have consulted with structural engineers and evaluated other storage options, and we are confident that we have the situation under control for now, and we are making plans to move forward towards a more permanent storage solution that will help us continue to grow.

Once we had addressed our building concerns, we

turned our attention towards making RCM a bigger, better, more integral part of the community. We knew that new plans like this would require money. With a shortfall anticipated this year and our county funding cut for 2010, we partnered with the Downtown Hutchinson Revitalization Partnership to benefit both of our organizations. They held an antique appraisal fair, and on the same day we held an auction to benefit RCM. We solicited donations of antiques and collectibles from the community, and took additional duplicate items out of the museum's collection to place in the silent and live auctions. We hope to make this an annual event, and thanks to the generosity of community members, we feel



we will be able to bring a fun, unique event to Reno County and at the same time provide for the museum so that we can continue to bring outstanding programs and services to the people of Reno County.

We also hope to develop new ways to reach out to people and improve our services. We have many ideas, but one of particular interest to us – and to members of the Reno County Genealogical Society, we imagine – would be the expansion of our research services. We currently have thousands of archive and research materials that have not been properly indexed because of limited staff time and volunteer availability. We would love to set up a project to address those items and add to the usability and accessibility of the items we have. At this time, we have two people (myself and the Curatorial Assistant, Lynn Ledeboer) who answer research requests and process those items, but we are also in charge of bringing new artifacts and archival materials into the museum's collection, updating information and caring for the collection, helping with exhibits, developing and presenting education programs... the list goes on! We hope to be able to concentrate on the archival resources and on developing projects and opportunities for volunteers to help us process these resources in the near future.

Additionally, we are in the process of looking at records from other city and county entities, such as the school census records held by the county, to see if we might be able to add them to our holdings or access their information for our research room. This will be an involved process of contacting various agencies, seeing if they are interested or will allow us to archive their records, making sure we have space to store them, and processing them so they are useful and user-friendly for our patrons. Though this won't happen overnight, we are excited about the possibilities it presents and about the potential benefits for the public, the agencies, and the museum.

If this plan is supported by our Board of Directors and comes to fruition, it may mean an expansion of our current research facilities, including more space for resources and researchers, and perhaps computers and software to allow researchers to make the most of their time and the materials we have.

This summer has been a time of change and redefinition for the Reno County Museum, and we fully intend to spend the next few years making good on the ideas we have formulated during these months. We thank the community and organizations like the RCGS for their continued support, and we look forward to the day when RCM is a stronger collaborative partner and an even bigger positive force for preserving history in Reno County.

## Photos & Postcards



**Arlington High School**

**Sophomore Class - May 1932.** 1st row: Virginia Eliot, Imogene Edwards, Frances Brooks, Georgia Tennant, Esther Koestel, Hattie Burling, Mildred Heller, E. S. Brychta. 2nd row: Clyde Ewing, Audrey Hemphill, Frances Fuller, Evelyn Ousley, Eleanor Spence, Ernestine Stull. 3rd row: Leo Krob, Milford Goering, Harold Krob, Scoville Bisket, Harvey Graber. 4th row: Fred Stull, Arlin Foss, Robert Richardson.



**Arlington High School**

**Class of 1937 - taken 1934.** Back: Cliff Bainum, Glen Higgins, Eugene Ewing, Burl Baker, Mark Rathburn, Robert Shackelford, Maxey Crabbs, Merle Rathburn. Middle: Maxine Ousley, Marqeurite Goering, Lorena Warner, Marallee Richardson, Floriene Hendricks, Ernestine Coleman, Marjorie Crane, Nola Potter, Elizabeth Bodwell. Front: Ed Brychta, Marcalee Edwards, Evelyn Cole, Elaine Kirkby, Clarence Bainum, Winton Brown, Pearl Krob, Edith Thrasher.

### Arlington Rural High School

Faculty 1934 & 1935

Picture taken in the gym on 12/20/1934

Back: Ed Brychta, A. L. Guyer, custodian.

Middle: Layton, Young, Chapman

Front: Prather, Bratnober

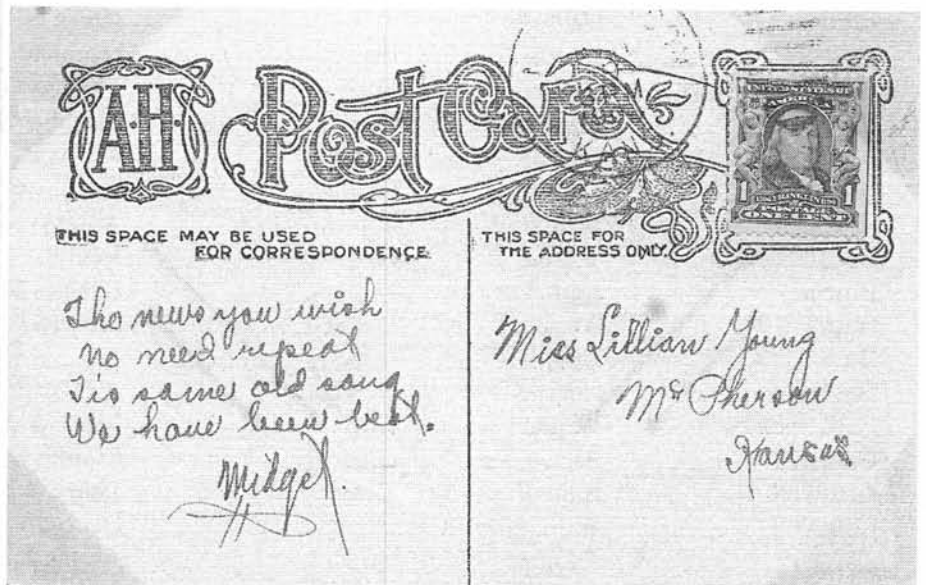
The three Arlington High School pictures were mailed to RCGS from the Marshall County Historical Society. They were removed from the scrapbook of Ed Brychta.



RCGS would also like to thank Harald Reksten of Hockessin, DE for sending photos to us. We will use some in future issues of the quarterly and our web site.



Postcard for Nickerson High School. Purchased on eBay



## Eminent Men of the State of Kansas

Compiled by Hill P. Wilson, 1901

This book is located in the Kansas Room at the Hutchinson Public Library - Typed by Melody Morgan

<u>Last Name</u>	<u>First Name</u>				
Abbott	James B.	Carruth	William H.	Goodlander	Charles W.
Adair	Samuel L.	Case	George H.	Gordon	James
Adams	Franklin G.	Case	Nelson	Goss	Nathaniel S.
Ady	Joseph W.	Clark	George A.	Grass	Harry W.
Alden	Henry L.	Clogston	Jeffrey B.	Green	Nehemiah
Anderson	Cyrus	Coburn	Foster D.	Griffin	Albert
Anderson	John A.	Cole	George E.	Grimes	Frank E.
Anderson	John B.	Coleman	Albert L.	Grovenor	Gurdon
Anthony	Daniel R.	Cook	Jeremiah B.	Guthrie	John
Anthony	George T.	Cordley	Richard	Hagan	Eugene
Atherton	Otis L.	Coulter	Orel H.	Halderman	John A.
Baker	Clifford C.	Craig	George R.	Hanna	David J.
Baker	Floyd P.	Crane	George W.	Hanna	George W.
Baker	Lucien	Crawford	Samuel J.	Harris	John P.
Baker	William	Crowell	Frank G.	Harris	William A.
Beaver	William M.	Curtis	Charles	Harrison	Thomas W.
Benedict	Samuel S.	Daniels	Percy	Hart	Daniel
Benton	Otis L.	Daughters	Curtis B.	Harvey	Alexander M.
Berry	Edward A.	Davis	John P.	Harvey	James M.
Betton	Frank H.	Day	John W.	Haskell	Dudley C.
Biddle	Charles F.	Dennison	Arthur W.	Haskell	John G.
Bishop	William	Dillard	William P.	Haskell	William H.
Blackmar	Frank W.	Dodsworth	Samuel	Hayden	Francis M.
Blair	Charles W.	Doster	Frank	Hays	Robert R.
Blue	Richard W.	Dyche	Lewis L.	Heaton	Charles M.
Bonebrake	Parkison I.	Eastman	David W.	Heizer	David N.
Booth	Henry	Edwards	William C.	Higgins	William
Botkin	Jeremiah D.	Elder	Peter P.	Hill	Charles A.
Bowersock	Justin D.	Elliston	Henry	Hoch	Edward W.
Bracken	Benjamin F.	Emery	James S.	Hogueland	W.E.
Breidenthal	John W.	Ewing	William N.	Hoisington	Andrew J.
Brewer	David J.	Ferguson	Levi	Holliday	Cyrus K.
Bristow	Joseph L.	Fike	James N.	Hood	Calvin
Broderick	Case	Finney	David W.	Horton	Albert H.
Brooke	Charles M.	Fitch	Thomas G.	Howe	Edgar W.
Brown	John H.	Forney	Josephus W.	Howe	Samuel T.
Brown	Milton	Forsyth	Albert P.	Hubbard	Thomas A.
Buchan	William J.	Foster	Cassius G.	Hudson	Joseph K.
Burlingame	Ward	Frakes	Abram	Humphrey	Lyman U.
Burriss	John T.	Frost	John E.	Hutchison	Perry
Burtis	Arthur H.	Funston	Edward H.	Ingalls	John J.
Burton	Joseph R.	Funston	Frederick	Inge	George B.
Buschow	Charles	Garver	T.F.	Inman	Henry
Calderhead	William A.	Geiger	A.C.T.	Johnson	A.S.
Caldwell	Alexander	Gilpin	Edward P.	Johnson	W.A.
Caldwell	Eldie F.	Gleed	Charles S.	Johnston	William A.
Caldwell	William W.	Gleed	James W.	Junkin	John E.
Carney	Thomas	Glick	George W.	Kimball	Charles H.
		Godard	Aretas A.	Kimble	Sam



King	Dennis W.	Nelson	Frank	St. John	John P.
King	Lewis P.	Norton	William S.	Stormont	David W.
Kingman	Samuel A.	Orr	James W.	Sutton	William B.
Klaine	Nicholas B.	Osborn	Thomas A.	Taylor	Albert R.
Kuehne	Otto	Oshant	Henry W.	Taylor	Edwin
Lamb	Giles H.	Overmyer	David	Thompson	Lafayette H.
Lantry	Bernard	Parks	J.S.	Thomson	William
Learnard	Oscar E.	Peck	George R.	Tomlinson	Joseph B.
Leedy	John W.	Peffer	William A.	Troutman	James A.
Leland	Cyrus, Jr.	Perry	William C.	Tucker	Edwin
Lewelling	Lorenzo D.	Peters	Alexander B.	Turner	Charles H.
Little	Edward C.	Peters	Samuel R.	Turner	Erastus J.
Little	John T.	Pilla	Charles	Turner	Robert W.
Lockard	Francis M.	Player	John	Vail	Thomas H.
Logan	James R.	Plumb	Preston B.	Valentine	Daniel M.
Long	Chester I.	Poindexter	Early W.	Veale	George W.
Long	D.B.	Postlethwaite	J.C.	Vincent	John H.
Lowe	Percival G.	Prentis	Noble L.	Vincent	William D.
Madden	John	Price	John M.	Waggener	Balie P.
Madison	Edmond H.	Pritchard	Levi	Walker	Claudius D.
Martin	George W.	Purcell	Isaac T.	Ware	Eugene F.
Martin	John	Redden	Alfred L.	Warner	Harvey A.
Martin	John A.	Reeder	James H.	Wellhouse	Frederick
Martin	William W.	Reeves	Albert B.	White	Hays B.
McAfee	Josiah B.	Reynolds	Simpson S.	White	William A.
McCabe	Francis S.	Rice	John H.	Wilder	Daniel W.
McCarthy	Timothy	Riddle	Alexander P.	Wilder	Edward
McCleverty	Joseph D.	Ridgely	E.R.	Wilder	Ledru H.
McCormick	N.B.	Robinson	Charles	Will	Thomas E.
McCrum	Charles	Rockwell	Bertrand	Williams	Archibald L.
McDonald	Benjamin P.	Ross	Edmund G.	Wilson	Hiero T.
McDonald	Benjamin P.	Rossington	William H.	Winans	George W.
McGonigal	James B.	Ryan	Thomas	Woodward	Brinton W.
McNall	Webb	Ryan	William H.	Woodward	Orpheus S.
McTaggart	Daniel	Sabine	Andrew	Wright	John K.
McVicar	Peter	Saunders	Laurence A.	Wright	Robert M.
Mead	William B.	Schlyer	John	York	Edgar D.
Metcalf	Wilder S.	Scott	Charles F.	Yost	Isaac M.
Milliken	John D.	Scott	Ernest J.		
Mills	Theodore B.	Seaton	John		
Millspaugh	Frank R.	Sheldon	Silas E.		
Mims	David A.	Simpson	Benjamin F.		
Moody	Charles H.	Simpson	Jeremiah		
Moon	John E.	Skidmore	Andrew H.		
Moonlight	Thomas	Smith	Charles W.		
Moore	Horace L.	Smith	Horace J.		
Moore	John W.	Snow	Francis H.		
Morrill	Edmund N.	Sparr	Ripley W.		
Morse	J.F.	Speer	John		
Mulvane	Joab	Sponable	John W.		
Mulvane	John R.	Spriggs	William		
Murdock	Marshall M.	Stanley	Edmund		
Murdock	Thomas B.	Stanley	William E.		
Murlin	Lemuel H.	Sterne	William E.		
Nellis	De Witt C.	Stine	Louis C.		

Cont'd on next page.

## **Eminent Men, Cont'd - Supplement**

John Seaton – Again elected to the Legislature November 6, 1900.

Milton Brown – Removed to Topeka in 1839.

James S. Emery – Died at Lawrence, Kansas June 8, 1899.

Joseph W. Ady – Died at Colorado Springs September 23, 1901.

Charles F. Biddle – Reelected to the Legislature from Comanche County November 6, 1900. Chairman Committee on Insurance; member of Joint Committee for revising the laws relating to taxation.

David A. Mims – Died at Garden City, Kansas August 29, 1901.

Charles F. Scott – Elected Congressman-at-Large November 6, 1900.

William W. Martin – Appointed Treasurer of the Western Branch of the National Soldiers' Home at Leavenworth, Kansas in 1901.

Brinton W. Woodward – Died at West Chester, Pennsylvania October 19, 1900.

Edward H. Madison – Elected Judge of the Thirty-first Judicial District November 6, 1900. Term expired by operation of law in 1901. Appointed Judge to fill vacancy by Governor Stanley.

David W. Finney – Elected Judge of the State Board of Railroad Commissioners in 1901.

Albert R. Taylor – Resigned the Presidency of the State Normal School in June 1901 to accept the Presidency of Milligan University, Decatur, Illinois.

William Bishop – Died at Salina, Kansas in 1900.

George W. Martin – Married October 10, 1901 to Mrs. Josephine Blakely, formerly of Junction City.

Sam Kimble – Appointed Judge of the Twenty-first Judicial District by Governor Stanley in 1901.

George R. Craig – Established the Bank of Natoma, Kansas in 1900. Elected President of the bank.

Abram Frakes – Nominated for Secretary of State by the State Conventions of the Democratic and People's parties at Fort Scott, Kansas in June 1900.

John Schlyer – Elected Representative from Ellis County November 6, 1900; member of Ways and Means Committee; author of Joint Resolution accepting from the United States the Fort Hays Military Reservation; author of bill creating on the Military Reservation a branch of the State Normal School; an Experimental Station of the State Agricultural College; making appropriations therefor, and apportioning lands of the Reservation between those institutions.

Frederick Funston – Appointed Brigadier-General United States Army in 1901, for distinguished services in organizing and leading a secret expedition into the interior of the Island of Luzon, that resulted in the surprise and capture of the Filipino Commander-in-Chief, Guinaldo, which practically ended the war in the Philippines.

James W. Orr – A second time elected Mayor of Atchison in April 1901.

William A. Calderhead – Reelected to Congress from the Fifth Congressional District, November 6, 1900.

George E. Cole – Reelected State Auditor November 6, 1900.

Francis H. Snow – Resigned as Chancellor of the Kansas State University because of ill health in 1901. Elected Professor of Natural History, Emeritus.

Frank W. Blackmar – Elected President of the Kansas Association of Charities and Corrections in 1901. Married to Miss Kate Nicholson in 1900.

## Beginning Genealogy Workshop - Fall 2009

The society offered a second beginning genealogy workshop on October 24, 2009 presented by Karen Burgess, Ruth Filbert and Gale Wall. Here is the outline of the material covered.

### 1. HOW TO BEGIN

Start at home

Forms

### 2. HOW TO RECORD WHAT YOU FIND

Complete Information

Document / Cite Your Sources

Types of Documentation

Analyzing the Information

Select an ancestor and check available records

### 3. BASIC RECORDS

### 4. WHERE TO LOOK

### 5. INTERNET GENEALOGY

Online:

Records Online - Free sites

Records Online - \$ Fee Sites

### 6. OTHER HELPFUL RESEARCH TIPS, TOOLS & RESOURCES

Organize

Other Forms [available at [familytreemagazine.com/freeforms](http://familytreemagazine.com/freeforms)]

Genealogy Software

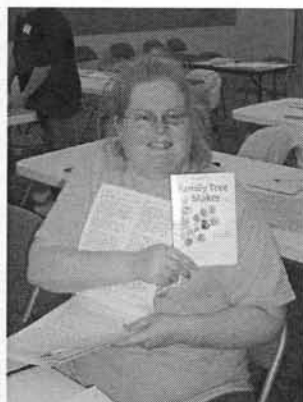
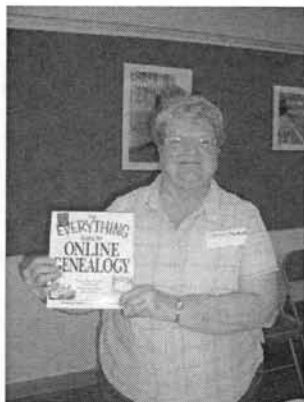
As you are doing your research, remember to do the following:

- Take notes on full size sheets.
- Realize the spelling of a surname may vary.
- Realize there may be discrepancies in records.
- Learn about the area [county/state] where your ancestors lived.
- Learn about epidemics and other events that affected the lives of your ancestors.
- Review brick walls often.

Other helpful "how-to" resources

Door prize winners were:

Sharon Soukup, Katrina Wiard-Stussy & Keith & Ruth Neuway



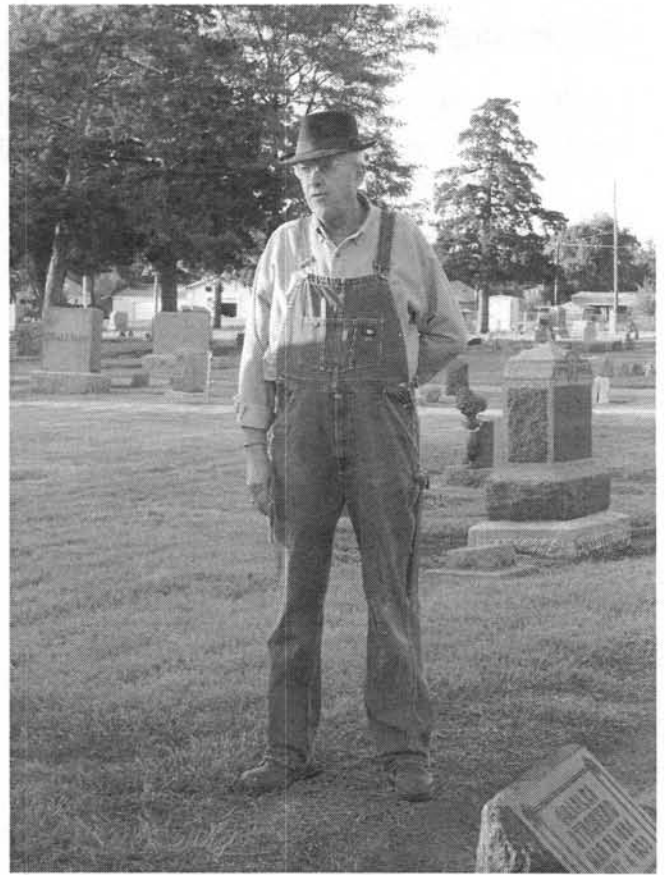
## Talking Tombstones

The third annual Talking Tombstones fundraiser of the Hutchinson Theatre Guild was held at Eastside Cemetery on October 17, 2009. They did a great job! I was happy that three people I suggested were portrayed during the event. A special thanks to RCGS member, Nancy Moore, for the information on Samuel Hirst that I submitted to the guild. If you have not attended this event you are missing an enjoyable walk through our local history of the lives that helped shape our community.

Right: RCGS member, Bill Rexroad, portrays family member Ben Rexroad, a local carpenter.

Bottom left: Jade Blakey portrays Laura Fife, a young black woman that died from falling off the roller coaster at Riverside Park. Laura is in an unmarked grave at the cemetery. I came across her story on the microfilmed newspapers.

Bottom right: Bob Colladay portrays Samuel L. Hirst, local photographer and great grandfather of RCGS member, Nancy Moore.





Shannon Knipp portrays a Bisonte Harvey Girl and brings a legend of westward expansion to life.



Cody Martin portrays Sherman Monroe, a police officer killed in the line of duty. He was featured in our August quarterly.



Arthur "Sparky" Colladay portrays Asa W. McKinney, an early Hutchinson physician and Union soldier.

## Alumni of Hutchinson High School

From the 1920 issue of the Allagaroo

Typed by Sally Eubanks

### Class of 1882

Hale, Jessie, Seattle, Wash. – Mrs. W. L. Woodnut

Meyer, Lucy, Hutchinson – Mrs. S. F. Hutton

### Class of 1883

Jacobs, Joseph, Seattle, Wash.

Pierce, Walter, Darlow, Kansas

### Class of 1884

Harsha, Lizzie. Deceased

Evans, May, Glendale, Calif. – Mrs. Myton

Ballinger, Harry, Seattle, Wash.

Blair, Marie E., Tacoma, Wash. – Mrs. F. W. A. Michols

Northcutt, Lizzie, Phoenix, Ariz. – Mrs. Sicus Ely

Mulky, Daisy, Detroit, Mich. – Mrs. Grant Easley

Ploughe, Sheridan, Hutchinson

### Class of 1885

May, Idy, Peoria, Ill. – J. E. McKeen

Hill, Allie T., Boston, Mass. – Mrs. Allie Flash

Burlingame, Jennie, San Francisco, Calif.

Jones, Minnie, Wichita, Kans. – Mrs. O. W. Joney

McFarland, Ella, Hutchinson. – Mrs. Ed Locke

Oswald, C. W., Hutchinson

Putterbaugh, Anna May, Hutchinson, - Mrs. Emerson Carey. Deceased

### Class of 1886

Beem, Eva, Hutchinson

Breazeale, Grace, Rogers, Ark.

Simpson, Myrtle, Hutchinson – Mrs. F. W. Cooter

Woodson, Lettie, Hutchinson – Mrs. J. B. Taylor

Woodson, John, Jennings, La.

Hill, Kate, Hutchinson, - Mrs. H. Broadus

Boyles, Anna B., Larned – Mrs. C. H. Rogers

Ploughe, Sherman, Hutchinson

### Class of 1887

Rea, Ella, Chicago, Ill.

Russell, Ella

Grady, Mary, Chicago, Ill.

Mintie, Annie. Deceased

Decker, Harry, San Francisco, Calif. Deceased

### Class of 1888

McCurdy, B. U., Kansas City, Mo.

Greenlee, J. Arthur, Los Angeles, Calif.

Hoagland, Olive C., Los Angeles, Calif. – Mrs. H. A. Lloyd

Hill, Cassius, Little Rock, Ark.

Boyd, Lizzie L. Deceased

Meredith, Edith, Washington, D. C.

Leaman, Richard M., - Reno Co., Kansas

Chamberlain, Grant, Hutchinson

Woodell, Fred L., Kansas City, Mo.

Smith, Emma. Deceased

Richards, D. E., Hutchinson

Jacobs, Dora, New York City

Putterbaugh, W. D., Russellville, Ark.

Holoday, Melvin, Anthony, Kansas

Robinson, Fred E., Chicago, Ill.

Jacobs, Bennie, New York

Rhoades, Eugene. Deceased

### Class of 1889

Little, Arthur. Deceased

Miller, Mayme, B.

Woodson, Wesley, Hutchinson

Marshall, Ona B., Kerman, Calif. – Mrs. Joel Hall

Gullatt, Thomas B. Deceased

Hicky, May, Castleton

Dunagan, Ida M.

Barclay, Maude E., Odessa, Russia – Mrs. Carl Mayer

Harsha, Bert M., Pittsburg, Pa. – Mrs. A. J. Rogers

**Class of 1890**

Woodson, Malcolm

Carpenter, Reed, Woodcliffe on the Hudson, N. Y.

McKee, Mamie B., Kansas City, Mo. – Mrs. Herbert Wood

Beem, Jessie, Chicago, Ill. – Mrs. Fred Robinson

Rawson, Berta, Hutchinson - Mrs. T. L. Melton

**Class of 1891**

Brehm, Louette, Hutchinson. Deceased

Campbell, T. Roy, Hutchinson

Kline, Nancy J., Hutchinson

Glascock, Laura, Hutchinson – Mrs. O. L. Davis. Deceased

Johnson, Ida, Hutchinson

Shore, Butler, Lawrence, Kansas

Smith, Eva, Hutchinson – Mrs. Eva Chapman

Wilkinson, William, British Columbia

Wimpleberg, Anna, Hutchinson – Mrs. Anna Smith

**Class of 1892**

Barthold, Willie, New York

Boyle, Edna, Chicago, Ill.

Corey, Samuel, Jetmore

Dade, Arthur, Hutchinson

Goldberg, Mamie, Kansas City

Jordan, Lena, Macksville – Mrs. Lou Hammer

Jordan, Will, Beatrice, Nebraska

Meyers, Olive, Hutchinson, R.F.D. – Mrs. Arthur Epperson

Price, Richard R., Minneapolis, Minn.

Strandberg, Alvah, Kansas City, Mo.

Willett, Gertrude, San Francisco

**Class of 1893**

Aldrich, Genevive. Deceased

Bicknell, Bertha C.

Body, Clyde, Kansas City, Mo.

Cowdin, Consuela

Cowdin, Earl

Cremer, Mary V., Hutchinson – Mrs. O. Howe

Carey, Bertha, Stafford – Mrs. H. Crawford

Burns, Robert L., Los Angeles, Calif.

Elliott, Myra Gertrude, Hutchinson – Mrs. J. E. Geyer

Goldberg, Birdie, Kansas City

Hardy, Fariny, Kansas City – Mrs. Joseph P. Fontron

Holiday, Frank M.

Holmes, William D.

McCurdy, Anna V., Okmulgee, Okla – Mrs. G. V. Cassidy

Pate, Alice

Palmer, Edith M.

Stallman, Ada Z., Salina – Mrs. Chas. Peck

Putterbaugh, Jay G., McAlester, Okla.

Rea, W. A., Kansas City, Mo.

McKnight, Carl

Seaman, Joseph M. Deceased

Watson, Malcolm

Mincer, Jennie. Deceased

To be continued in the February 2010 issue

**Mrs. Robert Baggs**

Mrs. Robert Baggs, died at her home north of town, October 18, after seven months illness. She was born in Shelby County, Ohio, in 1847. She was converted at seventeen years of age, and lived a faithful Christian, and died trusting in Jesus. She leaves a husband, three sons, two daughters, and many friends to mourn her death. Rev. Perry conducted the funeral services, after which the remains were laid to rest in the Partridge Cemetery.

*The Kansan October 23, 1896*

**Arthur Davis**

Davis---September 27, of heart failure, Arthur, son of Mr. and Mrs. O. Davis of 13 West Fifth Street, aged 9 years. The little boy was preparing for Sabbath school when he fell dead. His funeral was conducted Monday afternoon from the home. (Buried Eastside Cemetery )

**A. K. Burrell**

Burrell---in the afternoon of September 26, of Brights Disease, Hon. A. K. Burrell, of this city. The deceased was one of our most respected citizens, having been a resident of this city for nearly twenty years. For a number of years after his arrival here, he conducted the Reno House. He was elected mayor in 1880 or 1881 and served the city with integrity and honesty that won him many friends. For many years a sufferer with Bright disease, he finally succumbed to the inevitable, and was laid to rest Monday from the Presbyterian church. He leaves a widow and three daughters, Mrs. T. J. Talbott, Mrs. J. M. Brehm and Mrs. Wm. Devier.

**Will Ardery**

Ardery-----September 28, of consumption, Will Ardery, of 117 East Fifth aged 21 years. The funeral took place from the Presbyterian church, Wednesday afternoon, under the auspices of the V. C. T. Society.

**Katie Towne**

Mrs. Katie Towne, wife of Wm. Towne and daughter of M. V. Wampler and wife of East B Avenue, this city, died on Tuesday morning at Kansas city, where the family has been living for some time. The remains were brought to this city for internment, arriving on here on Thursday morning. Mr. Towne, the bereaved husband, was in Denver, Colorado, at the time of the death of his wife, but was notified by telegraph and arrived from the west on Thursday morning. The funeral took place from the residence of Mr. and Mrs. Wampler, on Thursday afternoon. Mrs. Towne leaves a daughter aged about a year and a half.

*Interior Herald April 12, 1890*

**Cox**---December 11, of inflammation of the bowels, Earl, son of Mr. and Mrs. Nathaniel Cox, of Haven

**Holland**---December, 15, infant son of Mr. and Mrs. James Holland, of Langdon.

**Labuhn**---December, 24, of diphtheria, the 13 year old son of Fred Labuhn of Arlington.

**Craig**---December 20, of typhoid fever, Mrs. Samuel Craig of Langdon.

*The Kansan December 25, 1896*



## LINKS

- Free forms from Family Tree magazine: <http://www.familytreemagazine.com/freeforms>
- The Library of Congress has maps, documents, photos, videos and much more: <http://www.loc.gov/index.html>

**Do you have a suggestion for a web site that we can share with our members?**

**Send it to: [RenoCoGenSoc@gmail.com](mailto:RenoCoGenSoc@gmail.com)**

### Forgotten Settlers of Kansas Certificate Program



Descendents of early Kansans are encouraged to submit applications for the following type of certificates:

- **Territorial** - ancestor lived in Kansas prior to 1/29/1861
- **Pioneer** - ancestor lived in Kansas between 1/29/1861 - 12/31/1880
- **Early Settler** - ancestor lived in Kansas between 1/1/1881 - 12/31/1900

Following certification, with permission granted, the application and pedigree chart will be printed in a Forgotten Settlers of Kansas publication. Applications and proof materials are contributed to the manuscript section of the Kansas State Historical Society's Center for Historical Research.

The Kansas Council of Genealogical Societies, Inc. is an umbrella organization for Kansas genealogical and historical societies, as well as interested individuals.

KCGS: <http://skyways.lib.ks.us/genweb/kcgs/>

## PUBLICATIONS ORDER FORM

Births - Recorded Early Births of Reno Co. 1890-1911 & Index	\$17.00
Cemetery Book of Reno County, 1865-1978	SOLD OUT
Cemetery Records of North Inman, Superior Township, McPherson County, KS	\$7.00
Deaths - Recorded Deaths of Reno County 4 volumes, 1890-1911 & Index	\$17.00
Homestead Records of Reno County Name, location & file date 1875-1945	\$21.50
Marriages of Reno County, 1872 - 1913	\$23.00
Naturalization Records of Reno County Index 1875-1955 filed at courthouse	\$12.50
Teachers of Reno County, 1884-1966	\$21.00
<i>The Sunflower</i> Back Issues - CD ONLY CD 1: 1979 to 1993   CD 2: 1994 to 2008	\$ 5.00 ea
Harper's Weekly 1888 - City of Hutchinson - featured supplement - PDF on CD	\$5.00
Plat Book of Reno Co. 1902 - PDF on CD	\$10.00
Postage & Handling included in price Kansas residents add 7.05% sales tax <b>Member discount—\$1 each item</b>	

### To order a publication - cut and return to:

RCGS - P. O. Box 5

Hutchinson, KS 67504-0005

Name: \_\_\_\_\_

Address: \_\_\_\_\_

City: \_\_\_\_\_

State: \_\_\_\_\_ Zip: \_\_\_\_\_

Email: \_\_\_\_\_

Circle or highlight the items you are ordering

Total amount enclosed: \$ \_\_\_\_\_

Make checks payable to Reno Co. Gen. Soc.

*Members receive \$1 discount on publications*



**RCGS MEMBERSHIP**

**RESEARCH CENTERS**

**Member Benefits**

- Four [4] issues of our quarterly “*The Sunflower*”- Published in Feb., May, Aug., & Nov.
- Free Queries in *The Sunflower* [limit 50 words]
- Monthly eNews – communicating meeting review & reminders, time sensitive data and other informative news.
- 11 monthly programs - both educational and fun
- 1 free hour of research
- Vote in annual election
- Surnames for Reno County ancestors posted on RCGS website
- Surname research profile [outside of Reno County] posted on RCGS website
- Discount on publications [\$1.00 per publication]
- List and link on RCGS website to member website [genealogy related]

**Level 1 - \$12 Basic**

**Level 2 - \$15 Community Connection**

Level 2 memberships support our community connection projects, such as, but not limited to: free genealogy workshops, books or microfilm placed in the library, marking an unmarked grave and working with other organizations to promote genealogy.

Membership requests received after August are applied to the following year and a complimentary November quarterly is mailed.

**Complete for New, Renewal or Gift Memberships**

Name: \_\_\_\_\_

Address: \_\_\_\_\_

City: \_\_\_\_\_

State: \_\_\_\_\_ Zip: \_\_\_\_\_

Email: \_\_\_\_\_

Reno County Surnames: \_\_\_\_\_

\_\_\_\_\_

**Thank you for supporting RCGS!**

**RCGS Research Services**

RCGS offers 4 Options - see our website for details

- 1) One record search for 5 names
- 2) *The Sunflower* article copies
- 3) Basic one-hour research service
- 4) Cemetery Photos

**Hutchinson Public Library**

901 N. Main  
Hutchinson, KS 67501  
620-663-5441  
Mon - Fri 9:00 am to 9:00 pm  
Sat 9:00 am to 6:00 pm  
Sun 1:00 pm to 5:00 pm  
[www.hutchpl.org](http://www.hutchpl.org)

**Hutchinson Family History Center**

518 E 43rd Street  
Hutchinson, KS 67502  
620-665-1187  
Tues 1:00 pm to 8:30 pm  
Wed 9:30 am to 5:00 pm  
Thur 9:30 am to 5:00 pm

**Kansas State Historical Society**

6425 SW 6th Street  
Topeka, KS 66615-1099  
785-272-8681  
[www.kshs.org](http://www.kshs.org)

**Reno Co. Historical Society & Reno Co. Museum**

100 S. Walnut  
Hutchinson, KS 67501  
620-662-1184  
Tues to Sat 9:00 am to 5:00 pm  
Sun 1:00 pm to 5:00 pm  
[http://www.renocountymuseum.org/Home\\_Page.php](http://www.renocountymuseum.org/Home_Page.php)



## SURNAME INDEX

## Not Indexed:

Inside Front Cover,  
TOC, Alphabetical  
list on pages 100-  
101.

Ady, 102  
Aldrich, 107  
Alford, 93  
Ardery, 108  
Baggs, 108  
Bainum, 98  
Baker, 98  
Ballinger, 106  
Balzer, 88, 93  
Barclay, 107  
Barthold, 107  
Beem, 106, 107  
Bicknell, 107  
Biddle, 102  
Bishop, 102  
Bisket, 98  
Blackmar, 102  
Blair, 106  
Blakely, 102  
Blakey, 104  
Bodwell, 98  
Body, 107  
Boyd, 106  
Boyle, 107  
Boyles, 106  
Bratnober, 99  
Breazeale, 106  
Bredfeldt  
Brehm, 107, 108  
Broadus, 106  
Brooks, 98  
Brown, 98, 102  
Brychta, 98, 99  
Burgess, 88, 93, 103  
Burling, 98  
Burlingame, 106  
Burns, 107  
Burrell, 108  
Calderhead, 102  
Campbell, 107  
Carey, 106, 107  
Carpenter, 107  
Chamberlain, 106

Chapman, 99  
Childs, 88, 93  
Cole, 98, 102  
Coleman, 98  
Colladay, 105, 105  
Conard, 93  
Cooter, 106  
Corey, 107  
Cowdin, 107  
Cox, 108  
Crabbs, 98  
Craig, 102, 108  
Crane, 98  
Cremer, 107  
Dade, 107  
Dankanyin, 93, 95  
Davis, 108  
Decker, 106  
Devier, 108  
Dunagan, 107  
Easley, 106  
Edwards, 98  
Eliot, 98  
Elliott, 107  
Ely, 106  
Emery, 102  
Eubanks, 93, 94  
Evans, 106  
Ewing, 98  
Fife, 104  
Filber, 103  
Finney, 102  
Flash, 106  
Foss, 98  
Frakes, 102  
Fuller, 98  
Funston, 102  
Glascock, 107  
Glass, 88, 93  
Goering, 98  
Goldberg, 107  
Gonzalex, 90  
Graber, 98  
Grady, 106  
Greathouse, 88, 95  
Greenlee, 106  
Griggs, 93  
Gullatt, 107  
Guyer, 99  
Hale, 106  
Hardy, 107

Harsha, 106, 107  
Head, 93, 95  
Heller, 98  
Hemphill, 98  
Hendricks, 98  
Hicky, 107  
Higgins, 98  
Hill, 106  
Hirst, 104  
Hoagland, 106  
Holiday, 107  
Holland, 108  
Holmes, 107  
Holoday, 106  
Hutton, 106  
Jacobs, 106  
Johnson, 107  
Jones, 106  
Joney, 106  
Jordan, 107  
Kimble, 102  
Kirkby, 98  
Kline, 107  
Knipp, 105  
Koestel, 98  
Krob, 98  
LaBuhn, 108  
Landavazo, 96  
Layton, 99  
Leaman, 106  
Ledeboer, 97  
Lewis, 93  
Lingg, 88  
Little, 106  
Locke, 106  
Long, 93  
Longhofer, 95  
Madison, 102  
Marshall, 107  
Martin, 102, 105  
May, 106  
Mayer, 107  
McCurdy, 106, 107  
McFarland, 106  
McKee, 107  
McKeen, 106  
McKinney, 105  
McKnight, 107  
Meredith, 106  
Meyer, 106  
Meyers, 107  
Michols, 106  
Miller, 106  
Mims, 102  
Mincer, 107  
Mintie, 106  
Monroe, 105  
Moore, 93, 104  
Morgan, 100  
Mulky, 106  
Myton, 106  
Nance, 93  
Neuway, 103  
Northcutt, 106  
Orr, 102  
Oswald, 106  
Ousley, 98  
Palmer, 107  
Pate, 107  
Pendleton, 93  
Perry, 108  
Pierce, 106  
Ploughe, 106  
Potter, 98  
Prather, 99  
Price, 107  
Putterbaugh, 106, 107  
Raddon, 90  
Rathburn, 98  
Rawson, 107  
Rea, 106, 107  
Reksten, 99  
Rexroad, 88, 94, 104  
Rhoades, 106  
Richards, 106  
Richardson, 98  
Robinson, 106  
Rogers, 106  
Russell, 106  
Schlyer, 102  
Scott, 102  
Seaman, 107  
Seaton, 102  
Shackleford, 98  
Shore, 107  
Simpson, 106  
Smith, 106, 107  
Snow, 102  
Soukup, 103  
Spence, 98  
Stallman, 107  
Standberg, 107

Stanley, 102  
Stoecklein, 95  
Stull, 98  
Talbot, 108  
Taylor, 102, 106  
Tennant, 98  
Thrasher, 98  
Towne, 108  
Wall, 89, 90, 93, 103  
Wampler, 108  
Warner, 98  
Watson, 107  
Wiard-Stussy, 103  
Wilkinson, 107  
Willett, 107  
Wimpleberg, 107  
Winslow, 94  
Woodell, 106  
Woodnut, 106  
Woodson, 106, 107  
Woodward, 102  
Young, 99

**Moving? Please notify us of your new mailing address. *The Sunflower* is NOT forwarded.**

RENO COUNTY GENEALOGICAL SOCIETY  
P. O. BOX 5  
HUTCHINSON, KS 67504-0005

RETURN SERVICE REQUESTED



AUTO PRESORTED FIRST-CLASS  
670 671 67117 KS-47

PRST FIRST-CLASS MAIL  
US POSTAGE PAID  
Wichita, KS  
PERMITH 431

4069091208-160825  
71  
67117

TEMP-RETURN SERVICE REQUESTED

M-53 Dec-09  
McMannis, Darren J.  
P O Box 387  
North Newton, KS 67117-0387

\*\*\*\*\*  
★ It's time to pay your 2010 dues. Please mail your dues before December 31st. ★  
\*\*\*\*\*

Laurel Cemetery - Yoder Township

