

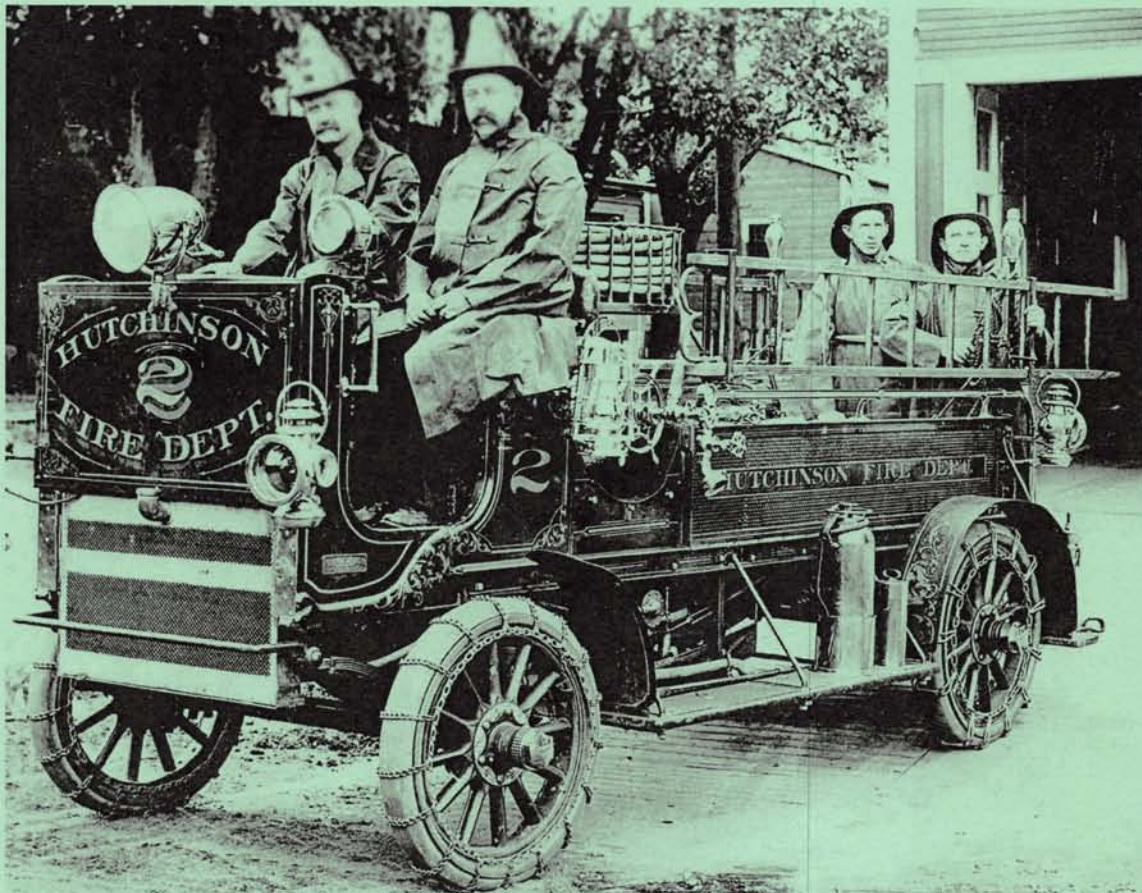


# THE SUNFLOWER

---

**Reno County Genealogical Society  
P. O. Box 5  
Hutchinson, Kansas 67504-0005**

ISSN 1048 - 048X



**Volume 31, No. 3**

**August 2009**

The Reno County Genealogical Society of Hutchinson, Kansas was founded in 1978 for the purpose of fostering genealogical research, promoting the exchange of information and encouraging the deposit of genealogical and historical materials in established libraries and archives. Membership in the Reno County Genealogical Society is open to anyone interested in genealogy or local history. Dues are Level 1: \$12.00 or Level 2: \$15.00 per year, per couple from January 1 to December 31 each year. Meetings are held the third Monday of each month in the Auditorium of the Hutchinson Public Library, 9th and Main, 7:00 – 8:45 P. M.

### RCGS 2009 Officers

President	Ruth Filbert
Vice President *	Karen Burgess
Treasurer	Kendall Griggs
Recording Secretary	Sally Eubanks
Corresponding Secretary	Sheila Sage

[\* Includes Program & Membership Chair]

### RCGS Email:

RenoCoGenSoc@gmail.com

### RCGS Web Site:

<http://rootsweb.com/~ksrcgs>

NOTE: Rootsweb.com is now on the Ancestry.com platform but this url still works. It will take you to this location: <http://www.rootsweb.ancestry.com/~ksrcgs/>

### RCGS 2009 Committees

Historian	Rita Lingg
Kansas Room Visitor Book	Sally Eubanks
Obituary Coordinator	Kathleen Dankanyin
Publication Sales	Sandy Wedman
Quarterly & eNews Editor	Gale Wall
Research Chairman	Rita Lingg
Web Coordinator	Gale Wall

**The Sunflower** is published quarterly by the  
Reno County Genealogical Society  
P. O. Box 5 - Hutchinson, KS 67504-0005  
ISSN 1048 - 048X

Editor: Gale Stafford Wall, Hutchinson, KS

The Sunflower is indexed in the Periodical Source Index [PERSI] of the Allen County Public Library Foundation

**The Sunflower** welcomes your articles and photographs on your Reno County ancestors.

- Email to: RenoCoGenSoc@gmail.com
- Mail to: RCGS - P. O. Box 5 - Hutchinson, KS 67504-0005
- Assistance is available in formatting your submissions
- Submissions are subject to editing and space availability

The Reno County Genealogical Society is a member of the Federation of Genealogical Societies and the Kansas Council of Genealogical Societies.

## In This Issue

Volume 31, Number 3

President's Message   2009 Raffle	60
News & Notes   RCGS 2009 Programs	61
Editor's Note   New Members   On The Cover	62
Time Capsules in Reno County	63
100 Year-Old Dog	64
Salt Discovery Well	65
Confederate Soldier Gets Headstone	66-67
Sanborn Fire Insurance Maps - 1892 & 1899 Business Indexes	68-69
Photos & Postcards	70-71
Officer Down	72-73
Criminal Court Docket	74 - 75
Lost in Plain Sight	76
Cemetery Signs - RCGS Community Connections Project	77
Mausoleum: A Look Inside at Eastside Cemetery	78-79
Obituaries: Dr. David B. McKee	80
Links   Forgotten Settlers of Kansas   Publications Order Form	81
RCGS Membership   Research Centers	82
Surname Index	83

We've used two services to shorten the URL of our web address

<http://tinyurl.com/RenoCoGenSoc>

<http://bit.ly/RenoCoGenSoc>

[www.rootsweb.com/~ksrcgs](http://www.rootsweb.com/~ksrcgs)

[RenoCoGenSoc@gmail.com](mailto:RenoCoGenSoc@gmail.com)



## President's Message

If you didn't attend the Kansas Council of Genealogical Societies annual meeting and genealogical conference, you missed the great programs presented by Megan Smolenyak Smolenyak. I found all of the presentations so interesting that it would be hard to pick one that overshadowed the rest.

As part of Megan's DNA program she told how she is working with the United States Military to trace relatives of the MIA's still being discovered in Vietnam. She is also working with county coroners in the United States to trace relatives of deceased persons whose identity is known, but no one has claimed the body. Megan told us that each Tuesday a new video is shown on Roots Television. Use your search engine to find "Roots Television" and enjoy the videos.

"Reverse Genealogy: Finding Your Lost Loved Ones" suggested ways to find missing kin or friends, find family history playmates, attract reunion attendees, locate family photos, bible, etc.

"Find That Obituary! Online Newspaper Research" included many websites for newspaper obituaries. She suggested that everyone bookmark [www.deathindexes.com](http://www.deathindexes.com)

There were about 91 in attendance at the conference. Braving the rainy trip to the Spiritual Life Center in Bel Aire from Hutchinson in my car were: Sandy Wedman, Sally Eubanks, Karen Burgess, Rita Lingg, and me. We had a great time going and coming. Other members from the Reno County Genealogical Society were Dwayne and Vivian Gobin from Hutchinson and Vivian's Aunt, Lillie Whiteman, from Lyons, Kansas.

I would like to ask you to take part in the coming activities of the RCGS. The Kansas State Fair Beginner's Genealogy lessons in September and in October, which is Family History Month, there will be a display in the Hutchinson Public Library of persons and places of Reno County, the pot luck supper at the Delos Smith Center with the drawing for the raffle tote bag and its contents and the winner of the Favorite Ancestor Contest.

Ruth Filbert

## 2009 Raffle Deadline Approaching

Our goal is to sell a minimum of 250 tickets at \$1 each by October 19, 2009. This Genealogy Kit is valued at \$200.00. The kit includes the 25 items below. Thank you for your support!

Red canvas tote bag	Cite your sources - 3 pads	
RootsMagic 4	Post it's - 2 pack	
Finding...in U. S. Census book	Flag markers	
Google Your Family Tree book	Pack of [12] colored pencils	
Genealogical Proof Standard book	Pack of [8] colored pens	
8 GB flash drive	Pack [12] of black pens	
2 - 1.5" notebooks	Pack of 6 mini highlighters	
Genealogy page dividers - 2 packs	Pack of 4 highlighters	
Clipboard	3 pack of scotch tape	
	Stapler desk set	
	Memo box	
	1 box of large paper clips	
	Magnifying glass	
	2 packs of Index cards	
	Photo album	
	Genealogy coffee cup	

## News & Notes

- Our November elections are just around the corner. Please consider serving. All offices and committees need volunteers. Please consider helping in this capacity if not a leadership role.
- Please support our raffle. Details on page 60.
- Our June meeting was cut short due to bad weather. We made it through the business portion but did not have our program on Maps. We will offer this program at a later date.
- Stop by our YouTube channel and see the new layout. Now all of our videos, not just the featured video, can be viewed without leaving our channel. You can find a link on our home page.
- NARA has added Immigration Indexes online: The U. S. National Archives and Records Administration has placed the following immigration indexes online: a] Germans to America 1850-1897; Italians to America 1855-1900; Russians to America 1834-1897. These records were previously available only in CD and book form. Visit the web site and scroll down to the section titled "Specific Immigration Topics" where you will find these indexes and other lists. <http://archives.gov/genealogy/immigration/>

Please keep us informed of your address and email changes.

## RCGS 2009 Programs

### 1/19 - 101 Best Genealogy Research Tips

[book provided] An in-depth look at six of the 101 tips.

### 2/16 – Census: The Basics

Learn about the different types of census, the information they provide and where you can locate them.

### 3/16 - Research and Learning Lab

Using Rootsweb.com. Conduct your personal researching Rootsweb.com and other databases.

### 4/20 – Family History Center

Film – Update on Familysearch.org.  
Resources and rentals.

### 5/18 - Cemeteries Galore: Continuity & Change in Kansas Graveyards [Kansas Humanities program]

Despite the familiar sameness of most Kansas cemeteries, there are many unique differences in the form of "regimented" church cemeteries, prison and Poor Farm cemeteries, and cemeteries created for various ethnic groups, children, and pets. Discover the many surprising and little known ways that Kansans have chosen to care for their dead. Slides.

### 6/15 - Maps, Maps, & More Maps

Learn how to locate and use them in your research.

### 7/20 - Reno County Research Resources

An overview of the records found in Reno County.

### 8/17 - PERSI and Other Resources

Learn about PERSI and other resources to help in your research.

### 9/21 - Research and Learning Lab

Using Ancestry.com.  
Conduct your personal research using Ancestry.com and other databases.

### 10/19 - Annual Potluck

Bring a dish and join us at Delos V. Smith center at 6:00 p.m. for our annual potluck. 101 W. 1st.

### 11/16 – WorldCat & Interlibrary Loan

Learn about WorldCat & interlibrary loan and how it can assist in your research.

December - no meeting.

## Editor's Note

Wow! We have a lot going on this year. Our community connection projects have received positive responses. You can read the updates on our web site on the events & news page. I will highlight a few items here.

**Cemetery Signs** - RCGS will purchase cemetery name signs for our cemeteries in the county without one. This will be a long-term project. Each sign will cost approximately \$65.00 and will be purchased from the Reno County Public Works department. This is part of our community connections effort to give back to our community. If you would like to sponsor a cemetery sign or contribute to the purchase of one we would appreciate your support. We kick off this project with funds donated by RCGS member Robert Martin for our cemetery projects. You can view the list of cemeteries on our web site.

**Photo Exhibit** - To celebrate Family History Month [October] RCGS will sponsor a photo exhibit entitled "Faces & Places of Reno County" at the Hutchinson Public Library. Members are given first option to submit two family photos for exhibit. Our goal for this project is to bring awareness to our society.

And now for some business...I enjoy working on our quarterly and web site - but I need help! I would like for a few local members to take ownership of a column and provide content for each issue. I can help develop the content into article format. Example columns could feature pioneers, doctors, secret societies, veterans, history of townships, schools or any other topic of interest to you. I have some great volunteers that help with typing and see this as the next step to continue a quality publication and growing and valuable web site.

## New Members

Mary Conklin - Hutchinson, KS

Richard Waterhouse - Atlanta, GA

Keith & Ruth Neuway - Mt. Hope, KS

Bob & June Winslow - Hutchinson, KS

# WELCOME!

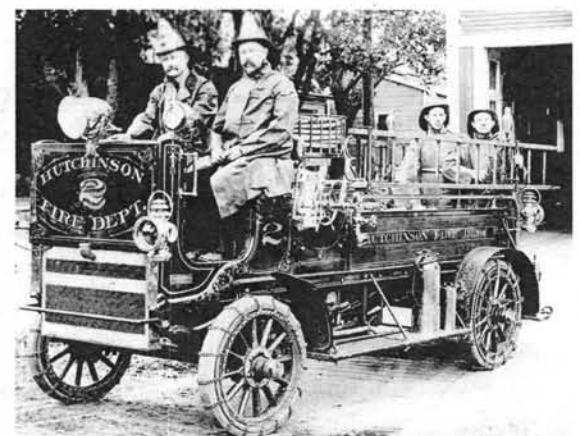
New members - Do we have your email?

Don't miss our monthly eNews!

## On The Cover

Hutchinson's first fire truck, photographed in 1906.

Left to right are fireman Bulger, Fretz, Rickard and Brewer



Shared by Kathleen Dankanyin

## Time Capsules in Reno County

I've been a resident of Reno County four years this month. Over this four year period I have come across several time capsules.



1961: Courthouse Lawn. This time capsule was my cover photo for the February 2007 issue. Centennial capsule scheduled to be opened in 2061.



1979: Wildmead Cemetery, Nickerson. I have not been able to find anything on this time capsule. Section 5, lot 45, space 3



1972: City Hall. Centennial capsule scheduled to be opened August 15, 2022 for the 150th anniversary of the founding of Hutchinson.

Not all capsules are marked or widely publicized. Often cornerstones for churches and public buildings are laid with time capsules. Such was the case of the Opera House of Lerado in November 1886. "A copy of the Lerado Ledger together with some trinkets and small change were placed in the stone." [Lerado Weekly Leader 11/4/1886 P1].

Some capsules are buried with no designated marker. During construction at Avenue A Elementary this past June a capsule in the form of a mason jar was discovered. It had been buried by the class of 1947. [The Hutchinson News 6/13/2009 P A5].

## How many others are out there?



2000: Buhler Grade School. Scheduled to be opened in 2050.



1987: Sylvia. To be opened in 25 years.



1986: City Hall, South Hutchinson. To be opened every 25 years.

### 100 Year-Old Dog

Keeping watch at Wagner Memorial is this 100 year-old dog carved from stone in 1909 by Lerlowe Howard, son of William and Mary Howard. Although it has withstood the years, the elements and time have affected the detail of the carving. It is estimated that it weighs close to 1,600 pounds.

Lerlowe was the second Reno County serviceman to be killed in World War I. He had planned to go into business with his father at Howard & Son Monument Company. In 1960 Mr. Wagner purchased the business from Mrs. Howard with the understanding the dog would be taken care of.

Lerlowe served with Co. A, Second Engineers, Second Division. He enlisted May 2, 1917 and went overseas with the Second. Her served in Verdun sector, March to May 1918; on the Marne, June; capture of Belleau wood, June 4; Bouresches, June 6; Vaux, July1; Chateau Thierry front, July; Marne counter-offensive launched July 18 against heights of Soissons. He was wounded in the first day's assault on July 18, 1918, near Tigny and died from his wounds the next day. He is interred in lot 510 at the Eastside Cemetery with his parents.



April 4, 1899 - July 19, 1918

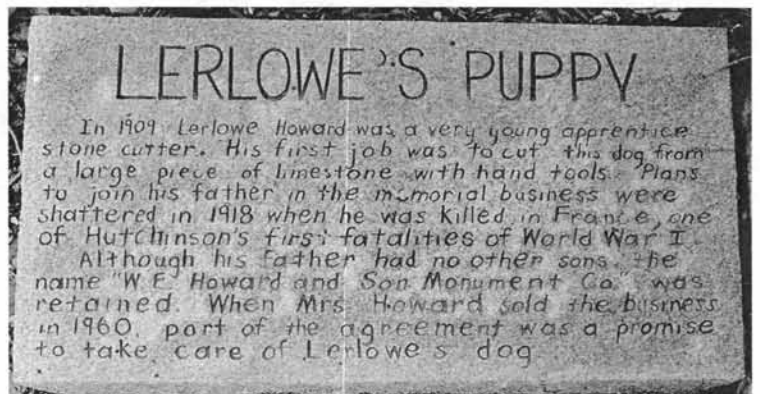
He was one of 11 honored with a bridge memorial in 1920. His is the 2nd avenue bridge over the canal. [bottom left]. More on these memorials in a future issue of The Sunflower.

Engraved stone that sits with the dog at Wagner. [bottom right].



1900 Reno Co., KS Federal Census

Howard	William	Head
	Mary M	Wife
	Lerlowe E	Son





## Pass The Salt

In September 1887, while drilling for oil, Ben Blanchard discovered salt in South Hutchinson. Stop by and see the new salt marker that includes the original well used by Blanchard. It's 1/4 mile west of Main Street on DesMoines St. West, which is the road across from McDonalds.

On site you will also find a picnic table, DAR marker and several displays with salt history. Be sure to push the light button and see the original well encased in the large box.



### SALT

Sodium Chloride, better known as salt, is an essential element of human life. It is found throughout the world in various natural environments including salt lakes, and in underground deposits.

The salt deposit under the cities of South Hutchinson and Hutchinson was formed thousands of years ago when an ocean covered this part of the earth. Great reservoirs of salt were left behind to harden when the water receded and evaporated. The salt deposit exists at shallow depths of just over 400 feet and as far as 800 feet below ground. Experts believe that there is enough salt in the deposit below to satisfy human consumption for several thousand years.

## Confederate Soldier Gets Headstone

John A. Beasley has rested at the Eastside Cemetery for 97 years, without a headstone, until July 20th.

A distant cousin, James Converse, with the help of Heath Roland, ordered, delivered and installed the confederate headstone in lot 1068.

Kathleen Dankanyin and I were in attendance with a few other people representing the family, cemetery staff and newspaper reporter. The Hutchinson News carried the story on Page A1 and A3 of the July 21st issue.

John enlisted on June 13, 1861 in Danville, KY and served in Co I, 3 & 7 KY CAV.

He was a prisoner of war, captured on July 20, 1863 in Cheshire, Ohio and transferred to Pt. Lookout, MD for exchange on March 2, 1865. On March 11, 1865 he appeared on a the register of Chimborazo Hospital No. 2 in Richmond, VA, admitted with the disease debilitas.

Thanks to James Converse and Heath Roland for sharing the photos and documents with the Reno County Genealogical Society.



John A. Beasley

(Confederate)		
13	7 Cav.	Ky.
John A. Beasley Private (New) Co. I, 2 Mounted Regiment (Gravois)*		
Appears on Company Muster Roll of the organization named above,		
for	Sept. Oct., 1862. Sept. Dec. 20, 1862.	
Enlisted:	When June 13, 1861.	
Where	By whom Capt. M. H. M. M.	
Period	3 years	
Last paid:	By whom Maj. Jackson	
To what time	May 31, 1862	
Present or absent	Present.	
Remarks:		
*This company subsequently became Company I, 10th Regiment Kentucky Cavalry.		
Book mark:		
(642)	C. W. Remick Capt.	

(Confederate)		
B	3 Cav.	Ky.
John A. Beasley Private, Co. 2, 3 Regt. Kentucky Cavalry.		
Appears on a record of Prisoners of War at Camp Douglas, Chicago, Ill.		
Where captured	Cheshire, Ohio	
When captured	July 20, 1863	
When received	Sept. 22, 1863	
When transferred	March 2, 1865	
Remarks:	Pt. Lookout, Md.	
Camp Douglas, Ill., Register No. 1, page 14		
(643)	R. Thomson Capt.	

(Confederate)		
13	5 Cav.	Ky.
John A. Beasley Private, Co. 2, 3 Regt. Kentucky Cavalry		
Name appears as signature to an Oath of Allegiance to the United States, subscribed and sworn to before Wm. H. Bracken, 1st Lieut. & Asst. Pro. Mar. Genl., Dept. Cumb., at Nashville, Tenn., Mar 19, 1865.		
Place of residence	Guard Lee, Ky.	
Complexion	Dark; hair dark	
Eyes	Hazel; height 5 ft. 10 in.	
Where surrendered	Sweet Water, Tenn.	
When surrendered	May 11, 1865	
Subscribed to oath	May 19, 1865	
Remarks:		
Investment shows - Roll of Prisoners of war, who voluntarily surrendered themselves, took the Oath of Allegiance, and were allowed to return to their homes.		
Hd. Qrs. Prov. Mar. Genl., Dept. of the Cumberland, Nashville, Tenn.; Roll No 588, sheet 32		
(644)	D. B. Brown Capt.	

Beasley Family

**Hiram Beasley**

Birth: 1799 in Garrard County, KY

Death: 01 Oct 1845 in Garrard County, KY

Burial: Garrard County, KY

**Elizabeth Bettie Harris**

Birth: Abt. 1803 in Garrard County, KY

Death: 1824 in Garrard County, KY

Burial: Garrard County, KY

**Children:**

- Ann Beasley
- Royal Beasley
- Mary Beasley
- James Shackelford Beasley
- **John A. Beasley**

Birth: 22 Apr 1832 in Garrard County, KY

Death: 16 Mar 1912 in Hutchinson, Reno, Kansas USA

Burial: Eastside Cemetery, Hutchinson, Reno, Kansas USA

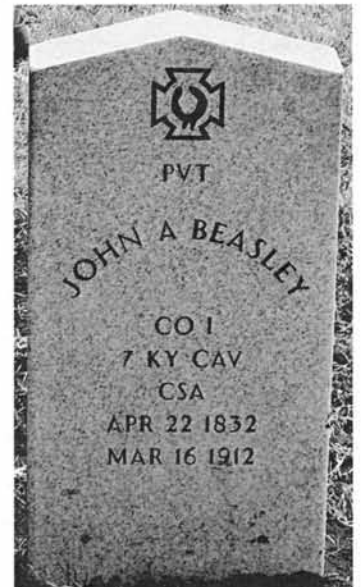
- Robert Beasley
- George Beasley
- Alexander Beasley
- Clara Beasley



**John A. Beasley**

Left: James Converse

Right: Heath Roland



## Sanborn Fire Insurance Maps - 1892 & 1899 Business Indexes

### 1892 Business Index

Advance Iron Works, 14  
 American Steam Laundry, 7  
 A. T. & S. F. R. R. Depot & Round House, 3  
 Avenue A Public School, 18  
 Avenue D Public School, 17  
 Baptist Church, 17  
 Bartlett, G. H., Salt Works, 18  
 Barton Salt Co., 16  
 Bennett & Blake, Bottling Works, 7  
 Catholic Church, 18  
 Central Block,  
 Central Public School, 17  
 C. K. & N.R.R. Passenger Depot, 9  
 C. K. & N. R. R. Freight Depot, 10  
 Christian Church, 2  
 City Green-houses, 8  
 Congregational Tabernacle, 2  
 County Court House, 7  
 Crystal Salt Works, 14  
 Daily News Printing, 8  
 Diamond Salt Works, 14  
 Fair, D. J., Lumber Yard, 3  
 First Water Mills, 9  
 Fourth Ave. Public School, 15  
 Gouin Lock & Humphrey Plant, Salt Works, 16  
 Grand Central Hotel, 5  
 Greenfield's & Co., Bottling Works, 10  
 Hotel Brunswick, 6  
 Hotel Clarandon, 5  
 Hotel Midland, 3  
 Hutchinson Bottling Works, 10  
 Hutchinson Carriage Shop, 11  
 Hutchinson Cornice Works, 4  
 Hutchinson Feed & Grain Co., 9  
 Hutchinson Gas Light Co. & Fuel Co., 3

Hutchinson Grocer Co., 4  
 Hutchinson M'f'g Co.'s Planing Mill, 7  
 Hutchinson Mill Co., 10  
 Hutchinson Model Works, 9  
 Hutchinson Packing Co., 17  
 Hutchinson Produce Co., 5  
 Hutchinson Salt & M'f'g Co., 18  
 Hutchinson Straw & Felt Works, 2  
 Hutchinson Street R'y Co., 8  
 Hutchinson Water, Light & Power Co., 5  
 Kansas Grain Co.'s Elevator, 3  
 Kansas Lumber Co., 4  
 Kansas Salt Co., 15 & 16  
 Kansas Sugar Refinery Co. (vacant), 16  
 Lutheran Church, 16  
 McFarland's Salt Works, 15  
 Maple Street Public School, 16  
 Masonic Temple, 6  
 Methodist Episcopal Church, 6  
 Methodist Episcopal Church at South Hutchinson, 14  
 Missouri Pac. R. R. Depot, 12  
 New York Salt Works, 15  
 News Printing, 8  
 North Side Public School, 16  
 Opera House, 6  
 Pacific Hotel, 12  
 Parker & Updegraff, Creamery, 11  
 Passmore Block, 8  
 Pennsylvania Salt Co., 14  
 Pickham, T. F., Boiler & Iron Works, 12  
 Pond, W. M., & Co., Lumber Yard, 12  
 Presbyterian Church, 8  
 Puterbaugh Block, 7  
 Queen City Creamery, 11  
 Queen City Hotel, 11  
 Queen City Salt & Mining Co., 15  
 Reno Hotel, 5

Riverside Salt Works, 15  
 Rock Island Lumber Co., 9  
 Santa Fe Hotel, 3  
 Sherman Street Public School, 17  
 Sidlinger Block, 5  
 Stallman Block, 5  
 Star Salt Works, 15  
 Tenth Ave. Public School, 16  
 Union Block, 6  
 Union Hotel, 7  
 Union Ice & Salt Co., 10  
 Universalist Church, 6  
 Water Power Co. & First Water Mill, 9  
 Western Salt Co., 18  
 Wilcox Block, 8  
 Windsor Hotel, 4  
 Zane Hotel, 11

Prepared by Debby Brown

### 1899 Business Index

American Steam Laundry, 7  
 A. T. & S. F. R. R. Freight Depot, 3  
 A. T. & S. F. R. R. Pass. Station, 4  
 Avenue A Public School, 18  
 Avenue D Public School, 17  
 Baker & Baxter, Foundry, 7  
 Baptist Church, 18  
 Bartlett, G. H., Salt Works, 18  
 Barton Salt Co., 16  
 Bennet & Son, Bottling Works, 7  
 Carey - Winchester Packing Co., 9  
 Catholic Church, 15  
 Central Block, 8  
 Central Public School, 15  
 C. K. & N. R. R. Passenger Depot, 9  
 C. K. & N. R. R. Freight Depot, 10  
 Christian Church, 2

City Greenhouses, 8  
 City Hall, 7  
 County Court House, 7  
 County Jail, 9  
 Crystal Salt Works, 13  
 Daily News Printing, 8  
 Delmonico Hotel, 3  
 English Lutheran Church, 2  
 Evangelical Church, 15  
 Fair, D. J., Lumber Yard, 3  
 First Water Mills, 9  
 Fourth Ave. Public School, 17  
 Gouin Lock & Humphrey Plant, Salt Works, 16  
 Greenfield's & Co., Bottling Works, 10  
 Hadley Chapel, 15  
 Holloway Breeding Stables, 14  
 Hotel Brunswick, 6  
 Hotel Midland, 3  
 Hotel Streeter, 5  
 Hutchinson & Southern R. R. Depot, 9  
 Hutchinson Bottling Works, 10  
 Hutchinson Carriage Shop, 11  
 Hutchinson Feed and Grain Co., 9  
 Hutchinson Gaslight Co. and Fuel Co., 3  
 Hutchinson Ice Co., 9  
 Hutchinson Kansas Salt Co., 13, 16 & 18

Hutchinson Lumber and Planing Mill Co., 7  
 Hutchinson Mill Co., 10  
 Hutchinson Packing Co., 17  
 Hutchinson Street Railway Co., 8  
 Hutchinson Water, Light and Power Co., 5  
 Hutchinson Wholesale Grocer Co., 4  
 Kansas Grain Co's Elevator, 3  
 Kansas Lumber Co., 4  
 Maple Street Public School, 10  
 Masonic Temple, 6  
 Methodist Episcopal Church, 6  
 Methodist Episcopal Church at South Hutchinson, 14  
 Missouri Pac. R. R. Depot, 12  
 Model Stream Laundry, 3  
 Monarch Mills, 9  
 Morton Salt Co., 14  
 New York Salt Works, 13  
 News Printing, 8  
 Noble, F. P., & Co., Elevator, &n, 9  
 North Side Public School, 16  
 Opera House, 6  
 Pacific Hotel, 12  
 Passmore Block, 8  
 Pennsylvania Salt Co., 13  
 Presbyterian Church, 15

Public School, No. 136, 14  
 Queen City Hotel, 11  
 Queen City Salt and Mining Co., 17  
 Reno Hotel, 5  
 Riverside Salt Works, 13  
 Rock Island Lumber Co., 9  
 Santa Fe Hotel, 3  
 Shady Grove Creamery, 11  
 Sherman Street Public School, 15  
 Sidlinger Block, 5  
 Stallman Block, 5  
 Star Salt Works, 17  
 Swedish Lutheran Church, 15  
 Tenth Ave. Public School, 16  
 Third Ave. Hotel, 4  
 Truendell Boiler Works, 10  
 Union Block, 6  
 Union Hotel, 7  
 Union Ice and Salt Co., 10  
 Universalist Church, 6  
 Water Power Co.'n First Water Mill, 9  
 Western Salt Works, 18  
 White, L. J., Lumber Co., 7  
 Wilcox Block, 8

Prepared by Kendall Griggs

More years coming online soon



Copyright 1899, by the Sanborn-Perris Map Co. Limited.

141

## 1908 Sunday School

Submitted by Brenda Baker.

Details provided: Dated April 16, 1908 from Marguerite Moorman to her cousin, Ruth Taylor in Illinois. Marguerite lived near Nickerson so it is likely the church too was in the Nickerson area.

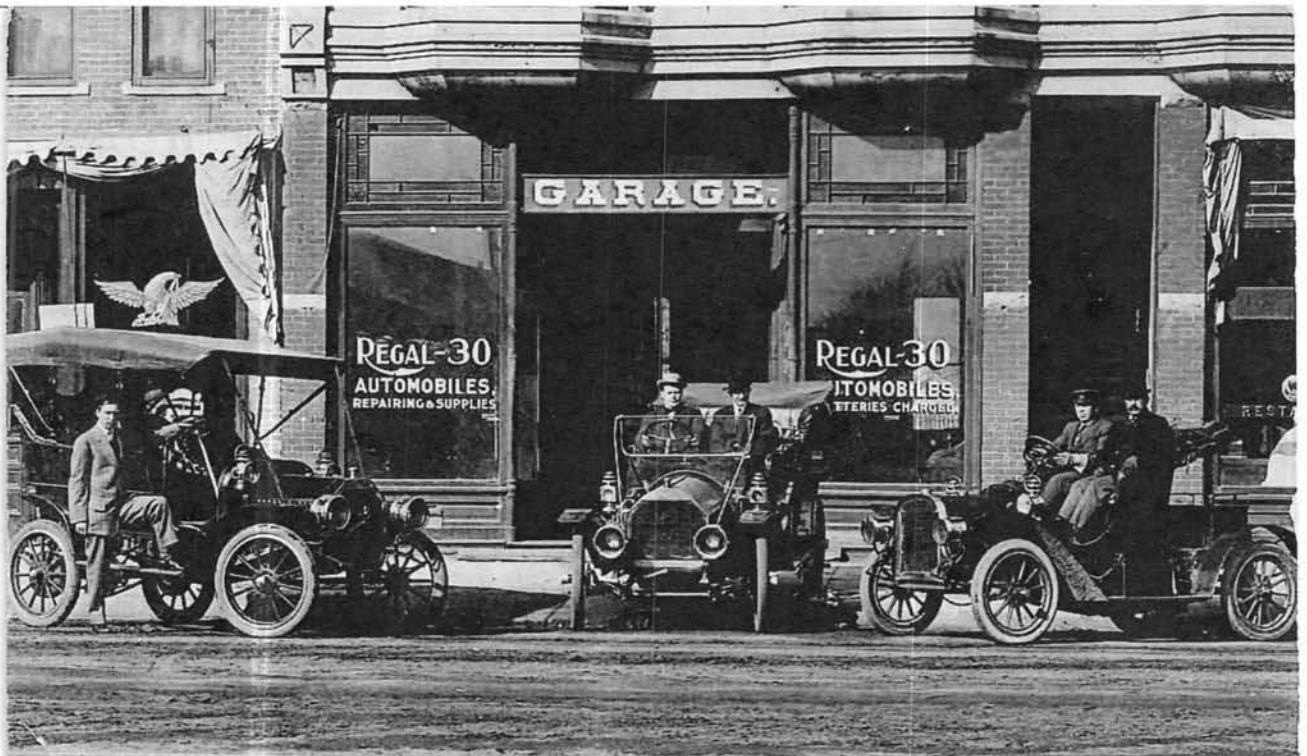
Those named are: Gladys Drake, Christene Donough, Bertha Justice, Vere Osborne, Mrs. Porter, Anna Yaggy, Maude Fossey, Mabel Tucker, Letha Richheart, Alma Richheart.



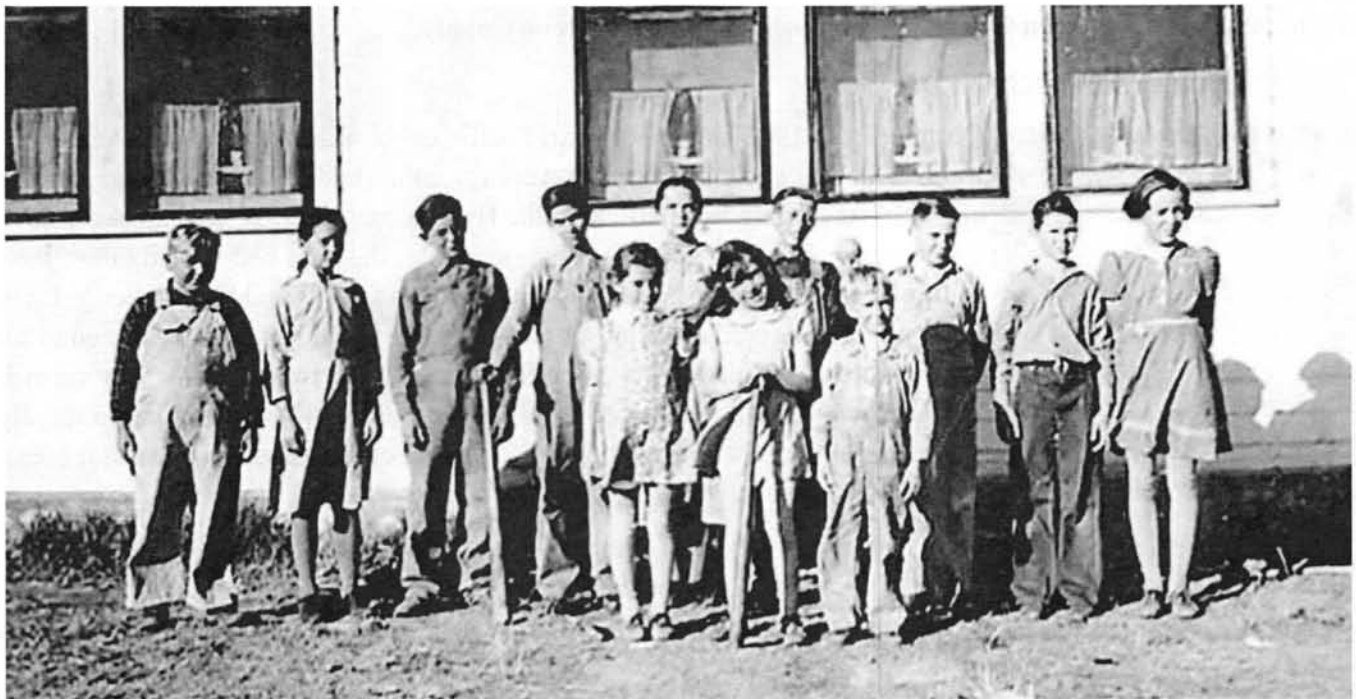
## Regal Automobiles

Submitted by Phillip Pitzer

Phillip received this picture from his wife's cousin, Glen Love. In the middle car is Robert Harvey Love [1887 - 1967], although it is uncertain which gentleman is him. Harvey worked at Regal and was also a farmer later in life Does anyone know where Regal Automobiles was located?



**Fairmount Grade School 1940 - 1941**



Left-to-Right: Allen Hirst, Ruth Kuhns, Stanley Kuhns, Melvin Yoder, Marilyn Pierce, Orpha Wagler, Joan Schardein, Paul Yutzy, Billy O'Hara, Bud Schardein, Bob Waller, Marcey O'Hara.

Photos submitted by Phillip Pitzer



Pleasant View School - District 69 - Family Swellhead  
Southeast corner of Greenfield Road and High Point Road

## Officer Down

Four men have given their lives while serving and protecting Reno County.

### Edmund M. Metz - Under Sheriff



On January 7, 1901, at the Missouri Pacific depot, Ed Metz was run over by a train. Both legs and a hand were severed from his body. He died within an hour and half. According to an article in the Hutchinson Daily News there were no eyewitnesses and his body was discovered after the train had started out of the station. He was taken to Stewart Hospital by his friends and Sheriff Long. It was reported he recovered consciousness and asked if both of his legs were gone and if they were he didn't want to live. He was also concerned with the welfare of his wife and that she was not better provided for. His condition deteriorated rapidly and he died soon after. During his brief time of consciousness he was not questioned about the accident.

Metz was on his way to Wellington to testify against a horse thief that he had captured in Abbyville. Metz had been subpoenaed as a witness in the case and was to take the train. It was speculated that perhaps he was running late and lost his footing while boarding the train. On January 9, 1901 his funeral was held from his home on seventh east with the Masons in charge of arrangements. It was well attended by members of the order, comrades from the Grand Army, many friends and neighbors. Ed was laid to rest at Eastside Cemetery. Out of respect for Metz the district court adjourned early and the county offices were closed. Ed Metz was born October 31, 1839 in Columbus, Ohio and served in the Civil War in several companies of the 38 Inf Rgt. He moved through the ranks from PVT in 1861 to 2nd LT on 2/25/1864. He was a member of the Joe Hooker post. He was survived by his wife Florance and sons Edmund Jr. and Joseph. His son, Edmund Jr., was City Clerk in Hutchinson. [Note: he is reported in later newspapers and online databases for downed officers as Edward].

### Thomas Stinson Fowler - Deputy

Financial Secretary of the Anti Horse Thief Association.

On the night of December 11, 1910 deputy Tom Fowler was shot shortly before 7 o'clock on Washington Street between West First Avenue and Sherman Street. The assassin fired several shots. Tom was armed with his Colt pistol and it was found lying near his body. It has not been fired. Members of the police were keeping watch near the area where it was believed a burglar had hidden his tools, and they were waiting on his return. Fowler placed a suspect under arrest and was headed toward the police station. They had reached the middle of the block of Washington Street between First Avenue and Sherman when the shots were fired hitting Tom. A \$500 reward was offered by the Anti Horse Thief Association and also by the County Commissioners.





For several days there were many conflicting stories and theories about the murder and whether it was the suspect arrested, friends of his or another party that had threatened Fowler in July. The inquest was held on December 13th by Coroner W. F. Schoor. The findings were Fowler died from a gun shot that entered the back below the right shoulder blade and pierced the body passing through the pulmonary vessel but not striking his heart. Several months after the shooting it was reported that Henry Bowers, also know by alias James Collins and Hiney, confessed to the murder of Fowler. This was the suspect taken into custody by Fowler the night he was shot. He had been released but taken into custody again later.

Tom was a member of several organizations, including: IOOF, Yeoman and AOUW. His funeral, attended by hundreds of people, was conducted by the Rev. Lyle at the First Methodist Church and he was interred at the Fairview Cemetery in Elmer. He was born April 17, 1860 in Illinois coming to Kansas in 1882. He was survived by his wife, Mary and four sons, Dwight, Esta, Homer and William.

#### Reason Sherman Monroe - Police Officer

On July 1, 1924 Sherman was shot three times as he attempted to arrest Maynor Cheek near the Brubaker grocery on Adams Street between Ave. A and Ave. B. He had answered a call to the Cheek home where it was reported Cheek and his wife were arguing. Cheek had left with his two year old son and gone to the grocery store. As Monroe approached Cheek he was shot. He did not return fire for fear of hitting the child. Cheek was arrested a few hours later. Sherman died of his wounds on July 2, conscious throughout his fight to live. His funeral was held from the Presbyterian Church with the Rev. John Barker presiding. He was laid to rest at Eastside Cemetery.



On July 3rd Cheek was arraigned on charges of first degree murder. He was sentenced to life in prison, to be served at the state penitentiary at Lansing. On July 5th, in the custody of Under Sheriff Fay Brown, he was taken to Lansing.

#### Kenneth M. Kennedy - Patrol Officer

On September 15, 1972 Kenneth and Reserve Sgt. Michael J. Coldren were shot while working undercover, attempting to buy alcohol from Robert E. Lee's Fried Chicken on South Plum, reported as a trouble spot for some time. After the buy was made and Kennedy showed his badge shots were fired. Kennedy was pronounced dead on arrival. Coldren survived his injuries.

Arrested in the shooting was 59 year-old Helen Fletcher Jobe. In February 1973 she was convicted of second degree murder and sentenced in March to 15 years to life, to be served at the Kansas Correctional Institution for Women at Lansing.

Kenneth was survived by his wife, Anita, whom he had married in June 1971. His funeral was held in Plainville where I assume he was laid to rest. K61 is named in honor of him.

## Criminal Court Docket is Heavy

More than 100 cases scheduled to be tried at September term.

The largest criminal docket for the past two years has been put on the schedule of the September term of district court which opens on September 11, with Judge W. G. Fairchild presiding. The jury has been called for September 21.

The docket includes 109 criminal cases. It consists of 49 state cases, 40 city police court appeal cases and 20 paroles. The docket as it has been arranged by Dale Shearman, acting clerk of the court is as follows:

- State vs. C. R. Orcutt, embezzlement
- State vs. L. W. Rentschler, grand larceny
- State vs. Roy Shiva, liquor
- State vs. Jesse Payne, grand larceny
- State vs. Sam Klugman, false pretense
- State vs. Jesse Payne, et al, grand larceny
- State vs. Geo. W. Rogers, et al, grand larceny
- State vs. S. L. Walker, desertion
- State vs. Paul James, statutory offense
- State vs. Wm. Lentz, statutory offense
- City of Arlington vs. Edd Perdow, jay driving
- State vs. Bethel Jones, assault
- State vs. Elmer Moore, assault
- State vs. D. Poteet, liquor
- State vs. Emma Waggoner, et al, liquor, 2 counts
- State vs. Ben Elrod, grand larceny
- State vs. Ollie Williams, forgery
- City vs. Rose Bratton, assault and speeding and carrying concealed weapons
- City vs. Mrs. Pete Chumos, carrying concealed weapons, disturbing peace
- City vs. Marie Mitchell, disturbing peace, assault
- City vs. Bill McAtee, liquor
- City vs. L. J. Chapman, grand larceny
- City vs. Cecil Crapo, grand larceny
- State vs. Clyde Waggoner, liquor
- State vs. Mrs. Bucklin, et al, confiscation of car
- State vs. Ray McAdams, et al, confiscation of car
- State vs. Mae M. Gilchrist, bigamy
- State vs. Wesley C. Davis, liquor
- State vs. Ray McAdams, liquor
- State vs. Clint Brown, assault
- State vs. Albert C. Boyd, desertion
- State vs. Elmer Brown, grand larceny
- State vs. A. A. Sword, grand larceny
- State vs. Gal Clark, liquor
- City vs. Zelia Ferguson, inmate of immoral house
- City vs. George Shannon, loitering
- City vs. C. Diggs, disturbing peace
- City vs. Ray McAdams, liquor
- City vs. J. L. Bobo, liquor
- City vs. Mary Holtkamp, immorality
- City vs. Will Little, drunk, liquor in possession
- City vs. E. Noonan, violation of pool hall ordinance
- City vs. Pearlie Beardon, liquor
- City vs. Bob Beardon, liquor
- City vs. Jack Carter, liquor
- City vs. Roy Shives, drunk
- City vs. R. S. Allphin, drunk
- City vs. Herbert Gardner, liquor
- State vs. Watson Dickey, embezzlement
- State vs. Laura Rogers, possession of stolen property

- State vs. D. Poteet, liquor
- State vs. Albert C. Boyd, desertion
- State vs. Phil Eales, et al, confiscation of car
- State vs. T. R. Cantwell, et al, violation of Sunday labor law
- State vs. John Pick, et al, confiscation of car
- State vs. Buck Rogers, possession of burglary tools
- State vs. Indian Geo. Vandervilt, violation Mann act
- State vs. Harry McClain, forgery
- State vs. Clarence Divens, liquor, nuisance
- State vs. J. P. Spaniol, desertion
- State vs. Waldo Hanselman, confiscation of car
- State vs. Milton King, statutory offense
- State vs. Walter Reynolds, burglary
- State vs. Harry E. Kennedy, robbery
- State vs. Vertis Brooks, disposing mortgaged property
- City vs. Harry Eisminger, liquor, 2 counts
- City vs. Jeff Lawrence, liquor
- City vs. Jeff Crafford, liquor
- City vs. George Dixon, destroying property
- City vs. G. A. Genignus, disturbing peace
- City vs. Lucile Dixon, immoral conduct
- City vs. Wesley Davis, liquor
- City vs. Mrs. Mary Holtkamp, immoral rooming house
- City vs. Bob Stafford, liquor
- City vs. J. Tucker, liquor
- City vs. Ella La Fawn, immoral conduct
- City vs. Virgil Fulling, speeding
- City vs. Park Wise, vagrancy
- City vs. A. Walden, immoral conduct

- City vs. Frances Jones, immoral conduct

*The Hutchinson News, 8/27/1925*

---

#### Other court news:

Court in session - 155 cases on the civil docket

*Hutchinson News, 9/5/1899*

Small criminal docket - about 10 cases

*Hutchinson News, 1/2/1902*

Seventy cases on criminal docket

*Hutchinson News Weekly, 12/9/1926*

---

#### Courthouse site announced today:

County commissioners said to have selected land on First Ave. West.

*Hutchinson Herald, 4/19/1929*

#### Effective July 20 Courthouse to Close Saturday's

For the first time in it's history the Reno County courthouse will be closed Saturday's starting July 20.

*Hutchinson News, 7/12/1963*



## Lost in Plain Sight



These boys are lost in plain sight! Has anyone been looking for them?

Frankie & Robert McKee are buried in Eastside Cemetery. When I saw their grave I wanted to know more about them. What I found is they are not listed on the interment master and the lot card does not reflect the burials. With no dates on the tombstone a check for individual interment sheets was not realistic with the number of burials in this cemetery. Records for the first 4 to 5 years were lost so perhaps they died during the early years of this cemetery.

Our society worked on a newspaper indexing project and created a card file for the deaths reported in the newspapers around the county. It was dropped as an active project in 2006. I checked it and was excited to find Robert and another that may be Frankie.

### Hutchinson News Weekly 7/8/1880 p7

An infant son of Dr. and Mrs. D. B. McKee of this city, died on Monday night after a short illness. It was buried Tuesday.

Died

McKee - On Monday night, after a short illness, the infant son of Dr. and Mrs. D. B. McKee, aged about seven weeks.

### Hutchinson News Weekly 9/2/1886 p7

Died

McKee - At 11 o'clock A. M. to-day, August 28, 1886, Robert H., son of Mr. and Mrs. D. B. McKee, aged ten months and fifteen days. Funeral services at the house at 10 o'clock A. M. Sunday.

There are interment records for 1886 but not one for Robert, unless, it is one that isn't legible. One son was unnamed in the 1880 obituary. My assumption is this is Frankie, although it could be another child since in the 1900 & 1910 census Cora had 4 of 7 children living. Further research revealed the same names I have which is 6 children: Frankie, Robert, Mary, Vida, Logan & Marshall. Frankie and Robert are buried in the same lot with their parents.

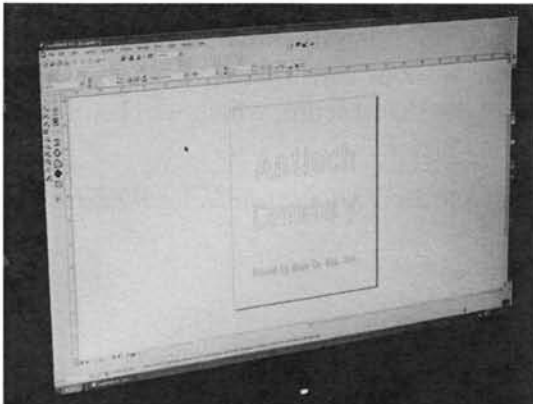
David died in 1901 [see page 80 for his obituary] and Cora in 1927. Cora's death notice dated 4/28/1927 from The Hutchinson News states that her body was brought back to Hutchinson from Kansas City, MO where she died. It only gives the names of her living children; Logan and Marshall McKee of Monett, MO and Mrs. Wood and Miss Vida McKee of Kansas City, MO.

Action will be taken to record these burials properly at RCGS and Eastside Cemetery.



### Community Connections Update

A few months back the RCGS board voted to purchase cemetery name signs for our county cemeteries without one, as part of our community connections effort to give back to our community. We have purchased the first two signs for Antioch and Hazen cemeteries. I was able to be present while our signs were being made by the Reno County Public Works Department. It was an interesting experience. My thanks to David McComb, Director, for working with us on this project.



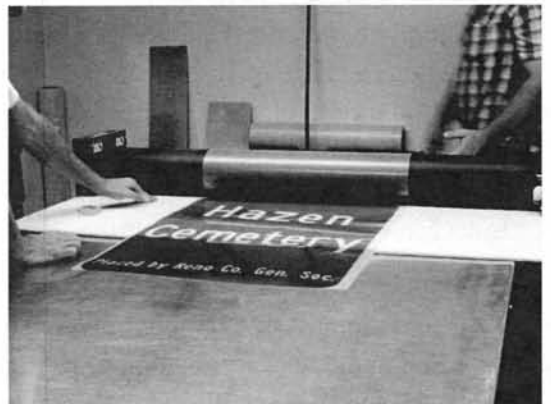
Left: Antioch Cemetery sign created on software.



Right: David Serviss preparing to print sign.

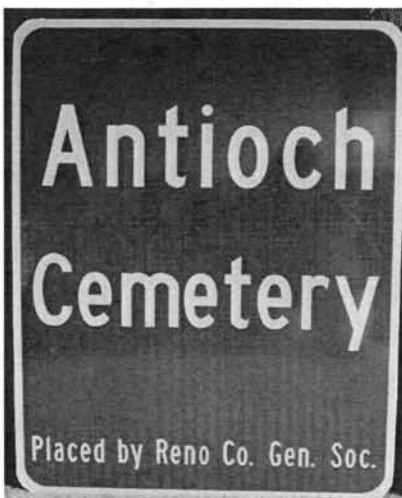


Left: Rick Little preparing sign lettering for Antioch Cemetery.

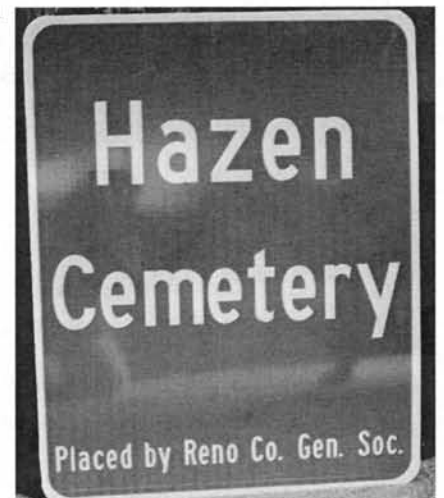


Right: Hazen Cemetery sign lettering preparation.

Each 25 x 30 sign will cost \$65. This cost includes the u-channel post and hardware. Installation arrangements will be made with each location. Below is a list of cemeteries without a sign. Contact will be made with responsible parties to obtain permission for sign placement, as funds become available for this project. If you would like to sponsor a sign or contribute toward this project please mail your tax deductible contributions to our post office box. The Antioch and Hazen signs will be installed very soon.



- |                   |                       |
|-------------------|-----------------------|
| Amish             | Maple Hill Langdon    |
| Bainum            | Pleasant Hill - Loda  |
| Baker             | Pleasant Hill - Ninn. |
| Buhler Mun. East  | Reformatory           |
| Fairview [Albion] | Thiessen              |
| Haven Priest      | Westminster           |
| Langdon Old       | Yoder Amish           |
| Lutheran          |                       |



## Mausoleum: A Look Inside at Eastside Cemetery - Part 1

- Cemetery is Filling...The mausoleum, which is to be built in the cemetery, ...was to have been put in this year but will now probably not be erected before next spring. *Hutchinson News Weekly*, 8/11/1910, P7
- Will Build Mausoleum. Local Company Organized and State Charter Applied For. *Hutchinson News Weekly*, 3/21/1912, P3
- The First In The State. John Boehm Threw the First dirt for First Mausoleum in Kansas. Construction work has started at Eastside Cemetery for the big mausoleum, the first to be erected in the state of Kansas. Excavation was commenced yesterday, the first shovel of dirt being thrown by John Boehm of the directors of the Mausoleum association. Material is now rapidly arriving and the work of construction will be pushed as rapidly as possible. It will take several months, however, to erect the mausoleum, which will be of reinforced concrete with marble interior. *Hutchinson News Weekly*, 6/6/1912, P1
- Dedicate This Fall. Mausoleum Will be Completed Some Time in October. *Hutchinson News Weekly*, 8/15/1912, P3

Of Marble and Steel and Concrete

Is the New Hutchinson Mausoleum

Slowly arising, in the south part of the East-side cemetery, is a massive structure of concrete, steel and marble, with the graceful lines of a Grecian temple. It is the new mausoleum, the first public mausoleum to be erected in the state of Kansas. Although it is not a large building, as structures go, it requires something like forty cars of gravel, sand, cement, steel and marble to construct the building. Construction is slow, for it is tedious and painstaking work to build this type of structure, and it is doubtful if it will be completed before November. The mausoleum will cost when completed, \$30,000. Although the mausoleum is being erected by the Iowa Mausoleum Co., of Waterloo, Iowa, it will, when the crypts are all sold, belong to the crypt owners.

Bert German, superintendent of the company, stated last evening that fully two-thirds of the crypts have been sold already, and by the time the building is completed all will have been taken. They crypt owners then will hold a meeting, form an organization, and choose a name for the mausoleum. Usually they are called "abbeys" and the Hutchinson mausoleum will be some name such as Hope Abbey. The mausoleum is a structure 66 feet long by 34 feet wide, and 25 feet high. In front of the structure will be a portico, including which the building will be 80 feet long. Down the center of the structure is a corridor 66 feet long and 14 feet wide, on either side of which are the crypts. This corridor is large enough to be used as a chapel if desired at a funeral service. It will have a floor of ceramic tile on a solid concrete base. On either side of this corridor are the crypts, the hermitically sealed oblong concrete and marble cavities in which are placed the caskets for the long, last rest. There are four sections of these crypts on each side, eight sections in all. Each section consists of five rows of five crypts to a row, making a total of two hundred crypts.

In the modern funeral service, instead of the body being lowered into a grave and covered with earth, it will be placed in a dry air and moisture proof, sealed cavity, where it will remain in perfect condition for ages to come, without decomposition. The modern funeral party will drive to the portico of the mausoleum. The casket will be carried into the corridor, followed by mourners. After the service the casket will be placed in the crypt, which then will be sealed first with a slab of concrete and steel, and that by an outer slab of marble, which will bear the inscription desired.

A good many Hutchinson families have purchased crypts enough to provide last resting places for all the members of the family. One wealthy Reno county family has purchased almost an entire section of the mausoleum.



Many will have the remains of loved ones removed from the graves in the cemetery and placed in crypts so as to have the families united in the new mausoleum. In one of the undertaking establishments the ashes of a man are being kept until the mausoleum is completed, to be placed in a crypt.

Science is joining with skill in the construction of the mausoleum. Every crypt is so constructed that it is impossible for there to be any cracking or cleaving. But the most interesting scientific process is that by which the gases from the bodies in the crypts are deodorized and purified. Between the outer wall and the inner wall of each crypt is an air chamber. This makes it impossible for the crypt to

get any moisture. A valve, so adjusted that the slightest gas pressure from within will open it, connects with a pipe which goes from each crypt to the upper part of the mausoleum. Gases from the bodies are carried off first through carbolic acid, then through medicated antiseptic cotton and finally through formaldehyde. When the gases are then carried off into the air they are germless and odorless. Similar arrangement is made through a vent pipe in the bottom of each crypt which carries off any liquids there might be, into quick lime which converts them into gases which are carried through the gas valve before mentioned.

Each crypt is seven feet two inches long, twenty-eight inches wide and thirty-two inches high. The front of each crypt is of Vermont marble, and the pilasters between the sections, and the ledges along the crypt rows are of enameled concrete. The building is absolutely fire-proof, weather-proof, and the crypts are air-proof. The building will stand as long as the world stands, for it seems that nothing could destroy such a massive structure. However, there is provided a permanent endowment fund, the interest from which will apply to any repairs, improvements and maintenance, so that even should all the crypt owners pass away, and be forgotten, the mausoleum, and its 200 silent sleepers will never be neglected.

“This is the first mausoleum to be built in Kansas”, explained Bert German, superintendent of the company, for Kansas. “We decided to build this here, as Hutchinson is a central point. We will bring in here, after its completion, committees from other towns and cities in the state, to see it. Already one committee has been here, from Arkansas City”.

“We are glad to have visitors inspect the mausoleum and see the manner of construction. It is very probable within a year or two another structure will have been erected here. The time will come when there will be numerous mausoleums in the cemetery here, and this modern method of interment will gradually supersede earth-burial entirely”.

*Hutchinson News Weekly, 9/5/1912, P7*

Note: no other mausoleums were ever built at the Eastside Cemetery. In the next issue we will look at the interment list of those resting here. The mausoleum does show signs of its age.



## Dr. McKee is Dead - Oldest Resident Physician of Hutchinson Passes Away

The death of Dr. David B. McKee occurred at 3 o'clock Sunday afternoon at his late home at no. 125 First avenue east, which ended the life of the oldest resident physician of Hutchinson. Dr. McKee came to Hutchinson in 1872, two years before Dr. S. H. Sidlinger who is, since the death of Dr. McKee, Hutchinson's oldest resident doctor. Before coming here Dr. McKee was a practicing physician in Iowa. Earlier in life he was somewhat of a traveler. He made an early day trip across the plains to California, and at different times made other long trips. His early life in Reno county was one of untiring labor, of long rides by day and night. The field of his labors extended south to Medicine Lodge and even into the Indian Territory. The distance of the trip or the poverty of the patient was not considered by Dr. McKee in his early day practice. Rides of ten, twenty or a hundred miles were bravely faced in all kinds of weather to reach points where medical aid was needed. His early life here was a hard one and his work was done nobly. During his long life Dr. McKee accumulated considerable wealth but he had financial losses several years ago through no fault of his own which left him in very moderate circumstances.

The past three years of his life, as the result of his overtaxing his physical strength through the long years of active practice, found him an invalid. Through the long waiting for the end to come, his friends have manifested the greatest sympathy and solicitude.

Dr. McKee was 62 years of age and leaves a wife, two sons and two daughters. One of the daughters is married, the other is Miss Vida, who is at the home. The sons are Marshal, who is here, and Logan, who has been in Europe for the past year. A cablegram has been sent to Logan announcing the death of his father.

### Second Article

The funeral of the late Dr. David B. McKee was held Tuesday morning at 10 o'clock from the Presbyterian church, in charge of his fellow physicians of this city. The services was conducted by Rev. Dr. Irwin. A song was sung by a male quartet consisting of Messrs. D. L. Wall, J. B. Hettinger, F. P. Hettinger and Clare Mallory. Before the church funeral a short service had been held at the doctor's late residence. The physicians of the city held a meeting at Dr. Sidlinger's office yesterday evening. The following memorial prepared by one of the physicians was read and adopted:

One by one the land marks of the medical fraternity of this city are passing away, Climer, Robertson, McKinney, Brehm, Wilson, Brown, and now McKee is added to the list. It almost causes us to ask, who next? In our acquaintance with Dr. David McKee there has never been an act or deed on the part of the doctor to cause us to regret the friendship formed. He was a hard working physician, always ready to answer professional calls, far or near. He was of the eclectic school, but he was a true eclectic, not hesitating to use a remedial agent whether in conformity to the views of that school or not. He was a successful physician with a large practice, one who endeared himself to the families who employed him. So much so was this true that it was very hard to answer emergency calls in the doctor's practice satisfactorily. The doctor was a man of strong prejudices. He was either your friend or he was not. You knew where to find him on the questions of the hour. He had been an old soldier, serving over four years in the civil war in a California regiment.

He was a member of the city council during one of the stormy periods of this city's history. He was one of the first physicians to locate here. He saw the little village grow to its present proportions. While mentally acute he saw fit to prepare for the hereafter by uniting with the Presbyterian church of this city. We that know the active, snappy physician, and also have known of his condition for the last year or two, while we extend the utmost sympathy to his wife and family, can but feel that it was a kindly deed of the great Creator in letting him pass away from this world which to him no longer existed.

*Hutchinson News Weekly*

*June 13, 1901, Page 5*



## LINKS

- Do you blog? Even if you don't you may enjoy reading blogs of other genealogists. Here is my favorite place to discover blogs of interest to me:

<http://www.geneabloggers.com/>

**Do you have a suggestion for a web site that we can share with our members?**

**Send it to: [RenoCoGenSoc@gmail.com](mailto:RenoCoGenSoc@gmail.com)**

### Forgotten Settlers of Kansas Certificate Program



Descendents of early Kansans are encouraged to submit applications for the following type of certificates:

- Territorial** - ancestor lived in Kansas prior to 1/29/1861
- Pioneer** - ancestor lived in Kansas between 1/29/1861 - 12/31/1880
- Early Settler** - ancestor lived in Kansas between 1/1/1881 - 12/31/1900

Following certification, with permission granted, the application and pedigree chart will be printed in a Forgotten Settlers of Kansas publication. Applications and proof materials are contributed to the manuscript section of the Kansas State Historical Society's Center for Historical Research.

The Kansas Council of Genealogical Societies, Inc. is an umbrella organization for Kansas genealogical and historical societies, as well as interested individuals.

KCGS: <http://skyways.lib.ks.us/genweb/kcgs/>

## PUBLICATIONS ORDER FORM

1880 Census of Reno County	\$18.00
Births - Recorded Early Births of Reno Co. 1890-1911 & Index	\$17.00
Cemetery Book of Reno County, 1865-1978	SOLD OUT
Cemetery Records of North Inman, Superior Township, McPherson County, KS	\$7.00
Deaths - Recorded Deaths of Reno County 4 volumes, 1890-1911 & Index	\$17.00
Homestead Records of Reno County Name, location & file date 1875-1945	\$21.50
Marriages of Reno County, 1872 - 1913	\$23.00
Naturalization Records of Reno County Index 1875-1955 filed at courthouse	\$12.50
Teachers of Reno County, 1884-1966	\$21.00
<i>The Sunflower</i> Back Issues - CD ONLY CD 1: 1979 to 1993   CD 2: 1994 to 2007	\$ 5.00 ea
Harper's Weekly 1888 - City of Hutchinson - featured supplement - PDF on CD	\$5.00
Plat Book of Reno Co. 1902 - PDF on CD	\$10.00
Postage & Handling included in price Kansas residents add 7.05% sales tax <b>Member discount—\$1 each item</b>	

### To order a publication - clip and return to:

RCGS - P. O. Box 5  
Hutchinson, KS 67504-0005

Name: \_\_\_\_\_

Address: \_\_\_\_\_

City: \_\_\_\_\_

State: \_\_\_\_\_ Zip: \_\_\_\_\_

Email: \_\_\_\_\_

Circle or highlight the items you are ordering

Total amount enclosed: \$ \_\_\_\_\_

Make checks payable to Reno Co. Gen. Soc.

*Members receive \$1 discount on publications*



**RCGS MEMBERSHIP****Member Benefits**

- Four [4] issues of our quarterly "*The Sunflower*" - Published in Feb., May, Aug., & Nov.
- Free Queries in The Sunflower [limit 50 words]
- Monthly eNews – communicating meeting review & reminders, time sensitive data and other informative news.
- 11 monthly programs - both educational and fun
- 1 free hour of research
- Vote in annual election
- Surnames for Reno County ancestors posted on RCGS website
- Surname research profile [outside of Reno County] posted on RCGS website
- Discount on publications [\$1.00 per publication]
- List and link on RCGS website to member website [genealogy related]

**Level 1 - \$12 Basic****Level 2 - \$15 Community Connection**

Level 2 memberships support our community connection projects, such as, but not limited to: free genealogy workshops, books or microfilm placed in the library, marking an unmarked grave and working with other organizations to promote genealogy.

Membership requests received after August are applied to the following year and a complimentary November quarterly is mailed.

**Complete for New, Renewal or Gift Memberships**

Name: \_\_\_\_\_

Address: \_\_\_\_\_

City: \_\_\_\_\_

State: \_\_\_\_\_ Zip: \_\_\_\_\_

Email: \_\_\_\_\_

Reno County Surnames: \_\_\_\_\_

\_\_\_\_\_

**Thank you for supporting RCGS!****RESEARCH CENTERS****RCGS Research Services**

RCGS offers 4 Options - see our website for details

- 1) One record search for 5 names
- 2) *The Sunflower* article copies
- 3) Basic one-hour research service
- 4) Cemetery Photos

**Hutchinson Public Library**

901 N. Main

Hutchinson, KS 67501

620-663-5441

Mon - Fri 9:00 am to 9:00 pm

Sat 9:00 am to 6:00 pm

Sun 1:00 pm to 5:00 pm

[www.hutchpl.org](http://www.hutchpl.org)

**Hutchinson Family History Center**

518 E 43rd Street

Hutchinson, KS 67502

620-665-1187

Tues 1:00 pm to 8:30 pm

Wed 9:30 am to 5:00 pm

Thur 9:30 am to 5:00 pm

**Kansas State Historical Society**

6425 SW 6th Street

Topeka, KS 66615-1099

785-272-8681

[www.kshs.org](http://www.kshs.org)

**Reno Co. Historical Society & Reno Co. Museum**

100 S. Walnut

Hutchinson, KS 67501

620-662-1184

Tues to Sat 9:00 am to 5:00 pm

Sun 1:00 pm to 5:00 pm

[http://www.renocountymuseum.org/Home\\_Page.php](http://www.renocountymuseum.org/Home_Page.php)

## SURNAME INDEX

Allphin	74	Crapo	74	Hooker	72	Moorman	70	Stafford	58, 75
Baker	70	Dankanyin	58, 62, 66	Howard	64	Neuway	62	Sword	74
Barker	73	Davis	74, 75	Irwin	80	Noonan	74	Taylor	70
Beardon	74	Dickey	74	James	74	O'Hara	71	Tucker	70, 75
Beasley	66, 67	Diggs	74	Jobe	73	Orcutt	74	Tucker	75
Blanchard	65	Divens	75	Jones	74, 75	Osborne	70	Vandervilt	75
Bobo	74	Dixon	75	Justice	70	Payne	74	Waggoner	74
Boehm	78	Donough	70	Kennedy	73, 75	Perdow	74	Wagler	71
Bowers	73	Drake	70	King	75	Pick	75	Wagner	64
Boyd	74, 75	Eales	75	Klugman	74	Pierce	71	Walden	75
Bratton	74	Eisminger	75	Kuhns	71	Pitzer	70, 71	Walker	74
Brehm	80	Elrod	74	La Fawn	75	Porter	70	Wall	58, 80
Brewer	62	Eubanks	58, 60	Lawrence	75	Poteet	74, 75	Waller	71
Brooks	75	Ferguson	74	Lentz	74	Rentschler	74	Waterhouse	62
Brown	68, 73, 74, 80	Filbert	58, 60	Lingg	58, 60	Reynolds	75	Wedman	58, 60
Brubaker	73	Fletcher	73	Little	74, 77	Richheart	70	Whiteman	60
Bucklin	74	Fossey	70	Long	72	Rickard	62	Williams	74
Bulger	62	Fowler	72, 73	Love	70	Robertston	80	Wilson	80
Burgess	58, 60	Fretz	62	Lyle	73	Rogers	74, 75	Winslow	62
Cantwell	75	Fulling	75	Mallory	80	Roland	66, 67	Wise	75
Carter	74	Gardner	74	Martin	62	Sage	58	Wood	76
Chapman	74	Genignus	75	McAdams	74	Schardein	71	Yaggy	70
Cheek	73	German	78, 79	McAtee	74	Schoor	73	Yoder	71
Chumos	74	Gilchrist	74	McClain	75	Serviss	77	Yutzy	71
Clark	74	Gobin	60	McComb	77	Shannon	74		
Climer	80	Griggs	58, 69	McKee	76, 80	Shiva	74	Not Indexed:	
Coldren	73	Hanselman	75	McKinney	80	Shives	74	TOC, P 68-69,	
Collins	73	Harris	67	Metz	72	Sidlinger	80		
Conklin	62	Hettinger	80	Mitchell	74	Smith	60, 61		
Converse	66, 67	Hirst	71	Monroe	73	Smolenyak	60		
Crafford	75	Holtkamp	74, 75	Moore	74	Spaniol	75		

**Moving? Please notify us of your new mailing address. *The Sunflower* is NOT forwarded.**

RENO COUNTY GENEALOGICAL SOCIETY  
P. O. BOX 5  
HUTCHINSON, KS 67504-0005

RETURN SERVICE REQUESTED



Come see us at the Kansas State Fair

Join us as we present beginning genealogy workshops at the Fair. Check our web site and blog for more details.

<http://tinyurl.com/RenoCoGenSoc>

<http://bit.ly/RenoCoGenSoc>

Saturday, September 12th - 1:00 P. M.

Sunday, September 13th - 1:00 P. M.

Wednesday, September 16th - 1:00 P. M.

Saturday, September 19th - 1:00 P. M.

