



THE SUNFLOWER

Reno County Genealogical Society

P. O. Box 5

Hutchinson, Kansas 67504-0005

ISSN 1048 - 048X



Volume 31, No. 1

February 2009

The Reno County Genealogical Society of Hutchinson, Kansas was founded in 1978 for the purpose of fostering genealogical research, promoting the exchange of information and encouraging the deposit of genealogical and historical materials in established libraries and archives. Membership in the Reno County Genealogical Society is open to anyone interested in genealogy or local history. Dues are Level 1: \$12.00 or Level 2: \$15.00 per year, per couple from January 1 to December 31 each year. Meetings are held the third Monday of each month in the Auditorium of the Hutchinson Public Library, 9th and Main, 7:00 – 8:45 P. M.

RCGS 2009 Officers

President	Ruth Filbert
Vice President *	Karen Burgess
Treasurer	Kendall Griggs
Recording Secretary	Sally Eubanks
Corresponding Secretary	Sheila Sage

[* Includes Program & Membership Chair]

RCGS Email:

RenoCoGenSoc@gmail.com

RCGS Web Site:

<http://rootsweb.com/~ksrcgs>

NOTE: Rootsweb is now on the Ancestry.com platform but this url still works. It will take you to this location:
<http://www.rootsweb.ancestry.com/~ksrcgs/>

RCGS 2009 Committees

Historian	Rita Lingg
Kansas Room Visitor Book	Sally Eubanks
Obituary Coordinator	Kathleen Dankanyin
Publication Sales	Sandy Wedman
Quarterly & eNews Editor	Gale Wall
Research Chairman	Rita Lingg
Web Coordinator	Gale Wall

The Sunflower is published quarterly by the

Reno County Genealogical Society

P. O. Box 5 - Hutchinson, KS 67504-0005

ISSN 1048 - 048X

Editor: Gale Stafford Wall, Hutchinson, KS

The Sunflower is indexed in the Periodical Source Index [PERSI] of the Allen County Public Library Foundation

The Sunflower welcomes your articles and photographs on your Reno County ancestors.

- Email to: RenoCoGenSoc@gmail.com
- Mail to: RCGS - P. O. Box 5 - Hutchinson, KS 67504-0005
- Assistance is available in formatting your submissions
- Submissions are subject to editing and space availability

The Reno County Genealogical Society is a member of the Federation of Genealogical Societies and the Kansas Council of Genealogical Societies.

In This Issue

Volume 31, Number 1

President's Message	4
News & Notes ~ RCGS 2009 Programs	5
Editor's Note ~ New Members ~ On The Cover	6
Member Spotlight: Brenda Baker & Barbara Kollhoff	7
2009 Budget	8
DNA Testing	9
CivilWarDocs.com	10
A. O. U. W. Anniversary	11
March 31, 1916 - Teachers report attendance in rural schools	12-13
Maps by Kenneth Lyon - Obituaries Betty Riley and Jayne Purcell	14-15
Pioneer Reunion in Turon	16
The Childs Family	17
Heritage Recipe - Sallie Hickman Humiston	18
Henry S. Thompson	19
1916 Hutchinson Gazette Items - Births and Deaths	20
Old Grave No Worry ~ Funeral Bill of Charles W. Peckham	21
Translation Tool	22-23
Obituaries	24
Links ~ Forgotten Settlers of Kansas ~ Publications Order Form	25
RCGS Membership ~ Research Centers	26
Surname Index	27



President's Message

2009! Will I remember to put this on all of my correspondence? It will take awhile.

I would like to welcome the new members to the Reno County Genealogical Society. Do not hesitate to ask for help. We are planning to set a date each month for a member to be available in the Kansas Room of the Hutchinson Public Library to assist researchers.

It's been cold and windy this past week and it is snowing as I write this message. Isn't this what we expect in January and February? What better time than now to:

1. Take a look at each of your family group sheets. Are you missing information? Do you have more than one source to support each piece of information.
2. Make a research log for that family. List the information that you need to find and where you think it can be found.
3. Do you have copies of important documents? Are the original documents - birth, marriage, death certificates and other legal documents in a safety deposit box?
4. Check <Cyndislist.com>. Did you know that websites are constantly being added, so what you didn't find yesterday, may be there today.
5. Have you scanned all of your pictures into your computer.
6. Do you use FamilySearch? <familysearch.org>? Try <pilot.familysearch.org>
7. REMEMBER A computer may crash, so make a backup of your family history research and pictures.

Karen Burgess gave the program at the January meeting of the Reno County Genealogical Society. She picked 3 tips out of the booklet "101 Best Genealogy Research Tips" published by Moorshead Magazines. In Tip #26 'Don't Trust Family Lore', she showed how her mother's story and the story as told to her cousins was part truth and part conjecture. In Tip #40 'Keep "To Do" folders', a quick trip to the library can be successful, if you have a research plan, Using Tip #47 'Think Like Soundex' Karen showed the many ways she had found her ancestors names spelled.

Gale Wall and Karen Burgess have compiled a notebook that outlines the sequence for anyone giving a Beginner's Workshop. When I was in danger of losing my voice during the State Fair workshops last summer, it was necessary for Karen to step in and give me a moment to rest. Thankfully, we had given enough beginner's workshops together that she was able to continue. But what if she hadn't been there? That was the incentive needed to compile the notebook. Thank you, Gale and Karen.

Ed and I have put in a lot of hours this winter watching ball games. Our youngest grandson is on the Macksville junior and senior varsity basketball teams and our granddaughter is on a traveling volleyball team and the Macksville recreation basketball team. That's at least a one hour trip to and from a game. It's seems like the High School basketball team plays in a lot of tournaments.

Gale Wall's sister died the 26th of November. Gale has lost two sisters and now her mother is seriously ill. Gale is in Georgia taking care of her mother. Please keep Gale and her family in your thoughts and prayers.

I am finishing this quarterly, although Gale had over 90 percent completed. Please help Gale publish the next quarterly. If you have an article you would like include in the next quarterly, please give it to me. **If**, it is a reprint of an article in another publication, would you get that person's permission to include it in the quarterly. Do you have a picture of a school group, family picnic or other grouping that could be printed include the names of the subjects. This could also be a way of finding the names of missing people in a picture.

Ruth Filbert

News & Notes

- Our new email: **RenoCoGenSoc@gmail.com**. Please change in your address books!
- Meeting location change - For our regular program meetings we now meet in the auditorium on the 2nd floor - down the hall from the reference desk area.
- RCGS will use the [locked] glass case in the Kansas Room to display family items. If you have a small item you would like to display please contact Gale Wall. We will rotate items every few months.
- Beginning Genealogy Workshop: March 28, 2009. Get more details on our web site and blog.
- Kansas Council of Genealogical Societies 35th Annual Conference: June 20, 2009 Wichita, KS. Featured speaker is Megan Smolenyak. Sessions include: *Trace Your Roots with DNA*, *Welcome to Roots Television!*, *Reverse Genealogy*, *Find That Obituary: Online Newspaper Research*. Early registration \$45. Registration received after May 30th is \$50. <http://skyways.lib.ks.us/genweb/kcgs>
- **Volunteers are needed** to type material for the quarterly and web site. Please volunteer for this team. Material will be emailed to you. Sign up for this team by sending an email to RenoCoGenSoc@gmail.com.

RCGS 2009 Programs

1/19 - 101 Best Genealogy Research Tips

[book provided] An in-depth look at six of the 101 tips.

2/16 - Census: The Basics

Learn about the different types of census, the information they provide and where you can locate them.

3/16 - Research and Learning Lab

Using Rootsweb.com. Conduct your personal researching Rootsweb.com and other databases.

4/20 - Family History Center

Film - Update on Familysearch.org.
Resources and rentals.

5/18 - Cemeteries Galore: Continuity & Change in Kansas Graveyards [Kansas Humanities program]

Despite the familiar sameness of most Kansas cemeteries, there are many unique differences in the form of "regimented" church cemeteries, prison and Poor Farm cemeteries, and cemeteries created for various ethnic groups, children, and pets. Discover the many surprising and little known ways that Kansans have chosen to care for their dead. Slides.

6/15 - Maps, Maps, & More Maps

Learn how to locate and use them in your research.

7/20 - Reno County Research Resources

An overview of the records found in Reno County.

8/17 - PERSI and Other Resources

Learn about PERSI and other resources to help in your research.

9/21 - Research and Learning Lab

Using Ancestry.com.
Conduct your personal research using Ancestry.com and other databases.

10/19 - Annual Potluck

11/16 - WorldCat & Interlibrary Loan

Learn about WorldCat & interlibrary loan and how it can assist in your research.

December - no meeting.

Editor's Note

Welcome to 2009! Ready or not a new year is here. 2008 was a busy time for me and so I have decided to slow down a bit this year. I will continue to work on the quarterly and web site and put some other things on hold, while withdrawing my involvement in others. Volunteers are needed to type material for the quarterly and web site. If you can help please volunteer for this team. Your ideas for stories or web content are welcomed!

We have two new board members this year. Kendall Griggs will serve as our Treasurer and Sheila Sage as our Corresponding Secretary. Thank you both for your service.

In 2008 I said goodbye to my older sister, Denise Duggan. She was so brave in her battle with cancer and quietly left us on November 26th. The void she leaves can never be filled.

May 2009 bring you new ancestors and long lost cousins,
hopefully with the missing piece of the puzzle.

Please keep us informed of your address and email changes.

New Members

Albright, Donna - Hutchinson, KS

Greathouse, June - Hutchinson, KS

Lager, Fred - Hutchinson, KS

WELCOME!

New members - Do we have your email?

Don't miss our monthly eNews!

On The Cover

Buhler dedicated this monument on December 1, 1957. The top inscription reads: "On this knoll stood our Mennonite forefathers who left Russia in search of religious freedom, viewed the land and settled in these parts in 1874 to 1880, their faith and courage have made it possible for us to enjoy the present. In gratitude to God and in remembrance of our forefathers, we, their descendents do dedicate this memorial in the year of our Lord 1957."

The monument, on the north end of town, is eight feet high and 19 feet long. The 3 bottoms panels are inscribed with vision, faith and labor. The thrashing stone sitting beside it was used by the Mennonites for their grains.



Member Spotlight



Name: Brenda Elaine Baker

Location: Woodland Park, CO

Reno County surnames: Anthony, Hinman, Moorman, Cavanaugh, Goering, Graber.

Other surnames: Wright, Matson, Whitlock, Jones, Insley, Tidler, Baker.

of years researching: Less than 1

Top 5 states: Kansas, Illinois, Indiana, Virginia, Oklahoma

Biggest or most frustrating brick wall: Finding out more about my great-great grandmother, Julia Ann Wright, Matson, Whitlock, Cavanaugh, who married four times, was widowed three, and whose families have not stayed in contact.

Ancestor farthest back: I can trace my Hinman roots back to the 1600s, as well as the Moorman family. Also, my Goering ancestors arrived with the migration of Mennonites to America, to South Dakota and then to Pretty Prairie. They have an amazing story. *[Editor's note: We hope you will share this story with us]*

Genealogy Serendipity: A woman from one of my great-great grandma's previous marriages sent a letter to "any Cavanaugh" in Hutchinson, KS and it made its way to my great Uncle, linking these two families and giving many answers. Also, while researching my grandma's teaching career, the Register of Deeds in Kingman County opened the annual report and there was a commencement program for the school with my grandma's name on it. She was not even aware they had it.



Name: Barbara Koontz Kollhoff

Location: Salina, Saline, Kansas

Reno County surnames: Koontz, Morgan, Kollhoff, Shultz, Strickler, Harden

Other surnames: Stoever, Birdsall, Kibler, Kiblinger, Price, Printz, Keyser, Moore, Brown, James, McAllister, Sours, Diehl, Rohleder, Eyler

of years researching: 30 - 35

Top 5 states: Virginia, New Jersey, New York, Pennsylvania, Ohio

Biggest or most frustrating brick wall: Not finding [for sure] the father of one of my 4th great grandmothers, Hannah Burdsall. From evidence I have found I am almost sure her father was Stephen Burdsall.

Ancestor farthest back: Assuming Hannah Burdsall is my ancestor, John Birdsall is the first Birdsall of whom we have a record. John was born 1490 in England. He married Isabel Auckland.

Genealogy Serendipity: When I found the first Koontz ancestor to arrive in America. It was about 10:00 p.m. and in my excitement I forgot there is a time change from Kansas to Virginia, and I called a cousin to report my find! To my surprise, he already knew about it and I think he wasn't very happy to be called at 11:00 p.m.!

You could be next! Send your answers to RenoCoGenSoc@gmail.com

2008 Prev Bal Forward [budgeted] \$ 800.00

INCOME

Membership - Basic \$ 1,200.00
 Membership - Comm Connection \$ 75.00
 Donations [tax deductible] \$ 75.00
 Can Money @ Mtgs \$ 25.00
 Research \$ 175.00
 Interest on CD \$ 200.00
 Surplus xfer from pub acct \$ 150.00
 Raffle \$ 250.00
 Grants \$ 100.00
 Other Income [Q sales, etc.] \$ -

EXPENSES

President \$ -

VP

Monthly door prizes \$ 50.00
 Membership \$ 50.00
 Programs \$ 250.00
\$ 350.00

Treasurer

KS Retailers Sales Tax \$ 50.00
 Postmaster Box Fee \$ 40.00
 Non Profit Fee \$ 40.00
 KCGS Dues \$ 15.00
 FGS Dues \$ 45.00

The Sunflower Quarterly

Printing \$ 650.00
 Postage \$ 700.00
 Postage Return Acct \$ 25.00
 Other [mat. copies/Ink] \$ 10.00
\$ 1,385.00

Web Site

Online album \$ 20.00
 Web hosting \$ -
 Domain registration \$ -
 Material/copy/other \$ 10.00
\$ 30.00

Research

Envelopes \$ 5.00
 Copy reimbursements \$ 20.00
 Refunds \$ -
\$ 25.00

Other [Comm & Events]

Community Connection Project[s] \$ 250.00
 Historian \$ -
 Recording Secretary \$ -
 Correspondence Secretary \$ -
 Obit Coordinator \$ 50.00
 Kansas State Fair [inc KCGS grant] - H/O \$ 200.00
 Kansas State Fair - Best of Show Sponsorship \$ 25.00
 Family History Month - Vol. Awards / Prizes \$ 100.00
 Publicity Brochures [700] \$ 125.00
 Publicity Posters [abt \$.25 ea] \$ 25.00
 Publicity Bookmarks [200] \$ 20.00
 Cemetery Project - record updating \$ 25.00
 Other - Special Projects / Misc needs \$ 50.00
 General Postage Acct - All except M'ship & Q \$ 100.00
\$ 970.00

TOTAL EXPENSES \$ 2,950.00

Balance \$ 100.00

ANCESTRY.COM Offers \$79 DNA Testing

The following announcement was written by the Generations Network, parent company of Ancestry.com:

Provo, Utah, January 27, 2009 -- Ancestry.com, the world's largest online resource for family history, has reduced the prices of its genetic genealogy DNA tests, allowing consumers more affordable access to the family history information provided by these tests.

Effectively immediately, the 33-marker paternal lineage test is now only \$79 (down from \$149). The paternal lineage test analyzes DNA in the Y chromosome, which is passed virtually unchanged from father to son. Advanced paternal lineage tests, maternal lineage tests (which looks at mitochondrial DNA passed from a mother to her children), and combination paternal maternal lineage testing options are also part of the product suite.

With similar DNA tests typically costing more than \$150, the new \$79 price offers individuals the best available value for genetic genealogy DNA testing. Test options priced in the \$79 range usually test fewer markers and are less genealogically useful.

"Ancestry.com has built a reputation synonymous with family history, and we think that DNA testing is a great complement to membership in our core service," said Tim Sullivan, CEO of Generations Network, Inc., parent company of Ancestry.com. "Our very clear goal is to build the world's largest database of genetic genealogy results. Substantially reducing the price of our 33-marker paternal lineage test will allow more people than ever before to unlock the mystery of their ancient origins and to find living relatives from around the world."

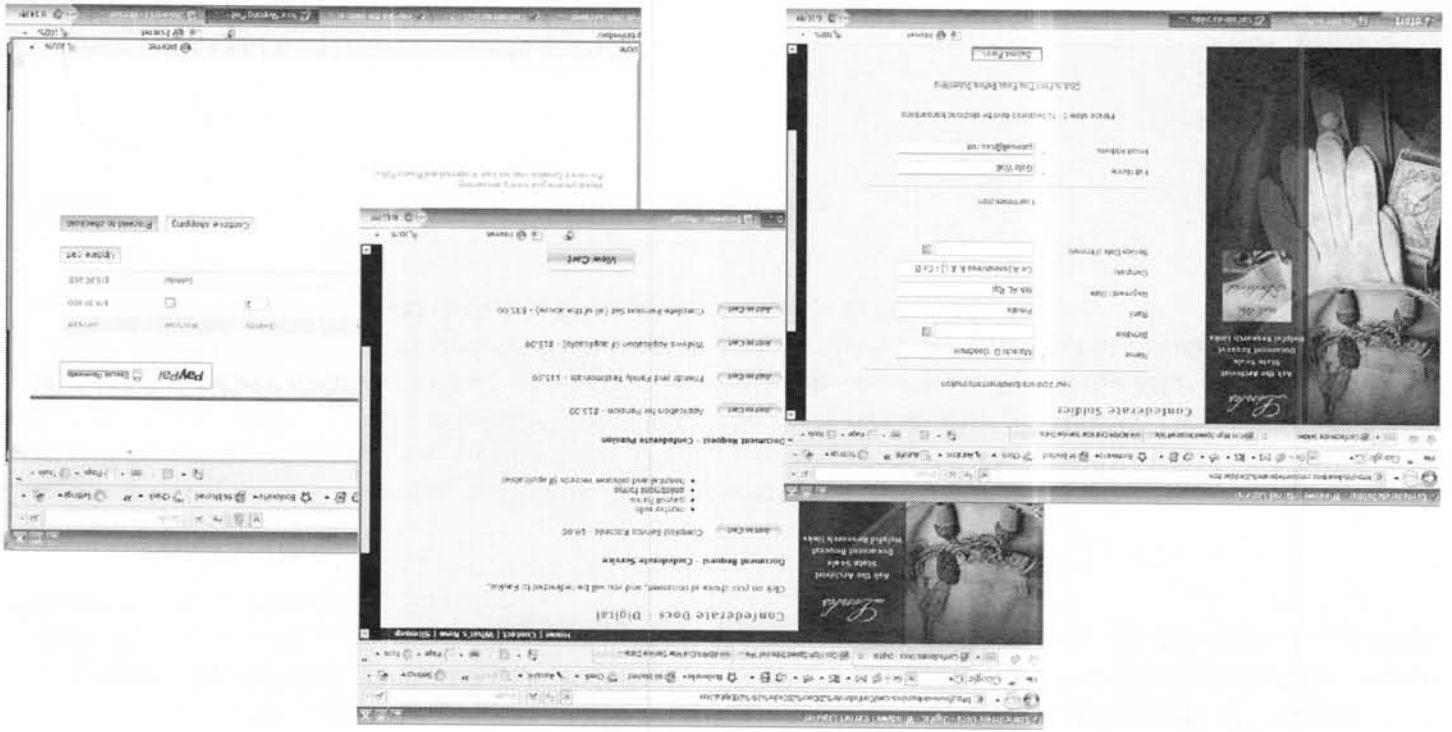
Ancestry.com has one of the fastest-growing genetic genealogy databases in the world -- helping more and more of its members to extend the branches of their family trees, discover living relatives they never knew existed and find new leads where traditional paper trails dead end. "The acquisition of more DNA participants will benefit family historians, genetic genealogists and researchers seeking colorful facts about their family histories," Sullivan added. In addition, users who were tested with other genetic genealogy testing services can enter their test results and compare with others in the Ancestry.com DNA database, the only online DNA database that offers this functionality.

As part of their test results, participants receive:

- Ancient Haplogroup determination with information about that group and a map of their migrations
- Online results that can help to potentially identify genetic cousins
- Access to the rapidly expanding, searchable Ancestry.com DNA database With the launch of the expanded DNA testing options, Ancestry.com has also introduced tools that allow users to add their DNA results to their online family trees. DNA results are inferred to all relevant members in the family tree, multiplying users' chances to find and make connections with genetic cousins who might not otherwise see their results. Since July 2006, more than 8.3 million family trees have been created online at Ancestry.com.

About Genetic Genealogy:

Genetic genealogy uses DNA testing to determine the genetic relationship between individuals. The two most common types of genetic genealogy tests are Y chromosome DNA (paternal line) and mitochondrial DNA (maternal line). Genetic genealogy provides a means to validate or supplement historical records with genetic data. There are many benefits including the ability to confirm or refute existing or suspected family connections. It may also help to determine the ancestral continent of origin or homeland and find living relatives. Genetic genealogy DNA tests do not provide conclusions regarding propensity toward disease or disclose information about inherited traits.



CivilWarDocs.com

Home | Contact | What's New | Sitemap

The Civil War, The War Between the States, The American War, whatever you may call it, was the greatest war in American history. 3 million fought and 600,000 paid the ultimate price for freedom. The civil war was the first time ethnic backgrounds of all types collaborated to fight for one common goal. That goal was freedom.

CivilWarDocs.com was created to allow researchers of all types the opportunity to purchase civil war documents at a reasonable price. These are the identical documents you would receive from the National Archives in Washington D.C.

These documents are testaments to the lives of soldiers that lived and breathed this devastating time in American history. They will give you a greater insight into the daily routines of these brave soldiers.

We are adding new documents to our files daily, continue to return to see what we have added next or join our mailing list to get the updates by email, as we add them.

www.civilwarDocs.com

Confederate Soldier

- Special Offer -

Compiled Service
Records delivered
to your desktop!
- \$9.00 -

Civil War Documents
- slide here -

A. O. U. W. Anniversary

My name is Judy Crawford, and I'm trying to transcribe a box of family letters & documents, as well as notices & brochures. These family members lived in Hutchinson for decades. I thought you might find the following of interest:

Hall of Hutchinson Lodge No. 77, A.O.U.W.

Hutchinson, Kansas, October 19, 1904

Dear Brother:

October 27 is the thirty-sixth birthday of the A.O.U.W. It is fitting that we should celebrate this day as the anniversary of the oldest and best fraternal insurance order in this country.

Our society has paid for the benefit of the widows and orphans of the deceased members One Hundred and Forty Million Dollars; over ten thousand dollars for every day since organization this order has distributed for the relief of widows and orphans. This grand work must continue. There are nearly four hundred thousand homes now being protected by the A.O.U.W. Your home is protected, and your neighbors and friends should have their homes under this same protection.

The thirty-sixth anniversary of the A.O.U.W. will be properly celebrated at the A.O.U.W. hall on Wednesday night, October 26. No. 77 has nearly 500 members, and we are going to endeavor to have 600 by January 1st, 1905. There are but three lodges in Kansas larger than No. 77. We want to be the largest. Your help can make it so. We need your help. Don't forget the date, October 26. We are going to have a great time. Bring your friends and make this occasion the grandest in the history of No. 77.

Yours in C. H. and P.,

H.N. JOHNSON,

H.C. TOTTEN,

DENNIS MOORE,

W.O. SHANK,

F.E. FEARL.

My great-grandfather is the above mentioned H.N. Johnson, Hugh Nelson Johnson.

Regards,

Judy J. Crawford (nee Johnson) [kahuna65226@mypacks.net]

Submitted via email by Judy Johnson Crawford

A. O. U. W. = Ancient Order of United Workmen

HUTCHINSON GAZETTE

Friday Morning, March 31, 1916

Attendance Good for Sixth Month

One District Had Perfect Percentage

Following are the attendance records made by various districts that have reported:

One Teacher Schools

33 -- East Eureka -- F. Marion Jones	100%	23 -- Obee -- Adaline Baer	93
72 -- Reno -- Mrs. Carrie Learned	96 3/5	120 -- So. Reno -- Preston Edwards	98 3/5
36 -- Salt Creek -- Louise Stevenson	100	37 -- Antioch, Ella Etrong	97
3 -- North Reno -- Emma Goddard	93	31 -- Lone Star -- Lillian Tolliver	95
133 -- Lily Dale -- A. A. Gaeddert	93	104 -- Blaine -- Vera Lynn	97 7/10
56 -- Fair Prairie -- Frede Leonard	96 2/5	97 -- Prairie Hall -- C. L. Huxman	99 3/5
148 -- Elmer -- Helen Lawson	99 2/3	90 -- Eagle -- Pearle Avery	96
112 -- Center -- Myrtle Christman	95	111 -- Central -- Mabel Griffin	94
13 -- Lawson -- Clarice Wilson	95	110 -- Jarvis -- Winfield W. Wells	96
156 -- Crescent -- Ona Dullman	97	138 -- West Eureka -- Imo Hamilton	97
61 -- Riverton -- Millie Seyb	96	44 -- Zion -- Leona Clark	97 1/2
144 -- Harmony -- Pearl Hill	94 1/2	68 -- New Home -- Jay W. Glass	94 3/4
107 -- Fountain Green -- Maude Frisch	93	158 -- Maple Grove -- Etta Harper	94
98 -- Balm Plains -- Edna Anderson	98	122 -- Enterprise -- Pauline Hildinger	96
21 -- Reno -- Iva Bishop	98 3/4	40 -- Independence -- Mabel Siler	96
14 -- Olmstead -- Alvah Lynn	99	92 -- Rising Sun -- Steva P. James	95
46 -- Red Rock -- Effie Bonham	98 3/4	119 -- White -- Martha Green	94 7/10
91 -- Antioch -- Mrs. Orva Boes	97	103 -- Kddie? -- E. J. Linscheid	95
28 -- Lincoln -- Nellie Forrester	98	132 -- Glendale -- Birdie Dean	96 2/3
64 -- Lakeside -- J. H. Friesen	94 1/2	66 -- Old Pretty Prairie -- Lizzie Bramwell	95
30 -- Ijams -- Maude Barr	93	151 -- Hill -- P. T. Neufeld	95
96 -- Friendship -- Elizabeth Hall	94 2/3	74 -- Sumner -- Hazel Shane	96 3/4
95 -- Belmont -- Della Plush	93	38 -- Franklin -- Zella D. Holaday	97
127 -- Thomas Grove -- Elsie Benscheidt	97 4/5	98 -- Loda -- Enola Bruch	95
159 -- Woods -- Ethel Switzer	93	113 -- Mennonite -- Mont Ballard	98
27 -- Westminster -- Helen Hill	93 1/2	11 -- Dodge -- Ralph Shamhart	96
49 -- Centennial -- Grace Karr	96	18 -- Maguire -- Grace Burris	94
29 -- Hunt -- W. H. Geiss	93	157 -- Clark -- Juanita Applegate	94 3/5
58 -- Eden Prairie -- Pearle Joslin	97 1/10		
97 -- Fruit Valley -- W. H. Neighbors	95 4/5		
		Graded Schools	
		126 -- Huntsville -- W. E. Lincoln	95
		126 -- Huntsville -- Lola Bradley	96
		62 -- Langdon -- Blanche Yoder	95 4/5
		62 -- Langdon -- A. J. Taber	93
		73 -- Turon -- Lester Smith	96
		73 -- Turon -- Carmel Brown	94
		136 -- So. Hutchinson -- F. J. Marble	92
		136 -- So. Hutchinson -- Mrs. F. J. Marble	94

136 -- So. Hutchinson -- Erma Chinn	95	High Schools	
5 -- Union -- Wirt Davidson	98 1/2	150 -- Buhler -- P. F. Quiring	98 1/2
5 -- Union -- Anna Yaggy	98	137 -- Abblyville -- E. W. Simes	9?
5 -- Union -- Gladys Drake	97 3/5	139 -- Haven -- H. M. Hollingsworth	93
45 -- Medora -- Maude Kinder	94	149 -- Pretty Prairie -- P. H. Huxman	95 1/2
45 -- Medora -- Ruth Gardner	98	42 -- Partridge -- Everett Gunn	99
150 -- Buhler -- Edgar Faler	95	84 -- Plevna -- R. E. Koons	96
150 -- Buhler -- Emil Dester	97		
150 -- Buhler -- Mignonette Yerkes	93		
150 -- Buhler -- Beulah Yerkes	94		
12 -- Castleton -- Iva Doles	94		
12 -- Castleton -- Mildren Friend	94		
12 -- Castleton -- Nora Eales	94		
137 -- Abbyville -- W. E. Sharp	95		
137 -- Abbyville -- Mrs. Ella Davolt	99		
137 -- Abbyville -- Emma Deck	92		
102 -- Sylvia -- Sadie Gardner	94		
102 -- Sylvia -- Alice Buskirk	96		
102 -- Sylvia -- Dorothy Pearson	97		
149 -- Pretty Prairie -- Sara Holloway	95		
149 -- Pretty Prairie -- Dan Schmitt	97		
149 -- Pretty Prairie -- Elda Patton	93		
139 -- Haven -- Laberta Owen	97		
139 -- Haven -- Maude Whipple	96?		
139 -- Haven -- Marie Kerns	94		
84 -- Plevna -- Cora Coleman	94		
84 -- Plevna -- Nettie Maltby	9?		
84 -- Plevna -- Bertha Lightner	9?		
42 -- Partridge -- Carrie Hamilton	9?		
42 -- Partridge -- Eleanor Lyon	9?		
42 -- Partridge -- Maude Puckett	95		

**CASSEETTE TAPES OWNED BY THE RENO
COUNTY GENEALOGICAL SOCIETY**

Some of the following tapes are definitely out-of-date. I will have them at the next meeting if anyone would like to look at them. Ruth

1. Cattle trails and railroads: Migration patterns, with emphasis on Kansas, Nebraska and Missouri.
2. The State and Federal Census.
3. Making sense with cents: Buying for the genealogy collections at the library.
4. The southern claims commission: Family records of the confederate states of America.
- 5 (a) Confederate military and veterans military records.
6. The national archives: Revising research opportunities with facts For the future.
7. A new partnership: The historians and the genealogist.
8. Determine what sources exist elsewhere when you cannot travel yourself: How and Why.
- 9 The challenge: Assisting genealogist in libraries -- References and referral.
9. Computers and Genealogy.
- 10 The computer: Purchasing considerations for the individual and the genealogical society. (2)

The following article, written by Kenneth Lyon, President of the Old Fort Genealogical Society of Southeastern Kansas, Inc. Fort Scott, Kansas. It was published in the *Old Fort Log*, Summer 2008.

FROM THE PRESIDENT OF OLD FORT GENEALOGICAL SOCIETY

When recently manning the OFGS library one afternoon with no visitors and a bit bored I began browsing some of the publications on the shelves. I picked up and leafed through the January/February issue of *Everton's Genealogical Helper*. In mid-magazine, an article by Bill Dollarhide concerning the **United States Geological Survey** caught my attention. Having been an aviator and having studied maps for many years the subject, "USGS Map Tools Online:", was certainly of interest.

While flying for the Air Force, I always wanted to know exactly where I was at any given moment in the event I had to "eject" from my airplane. This was especially important when flying combat missions in Southeast Asia since it would be nice to tell the air rescue guys where to find and pick me up! In my genealogy research over the years I have also always wanted to "place" my ancestors.

I've learned that maps are indispensable not only in finding your way on the ground and in the air, but extremely useful in finding where people lived. I have used USGS, State and County maps extensively always finding them helpful ... and interesting. Today's satellites and the computer now add a new dimension in that one can now go to Google maps and see high resolution aerial photos of many places on this earth.

After retiring from the Air Force, I became the business manager of the Fort Scott Tribune and was a USGS dealer where anyone could purchase or order maps. Knowing the value of the USGS 7.5 series topographic maps, I maintained all those that covered Bourbon County and selected maps of adjoining counties. The Tribune still has a file of maps, but no longer serves as a dealer.

In his article Dollarhide reinforces the importance of the 7.5-topo charts in that they provide the most terrain detail and many structures. These maps show the scale of 1:24,000 which equates to one inch on the map equaling 24,000 inches on the ground. Or, one inch equals 2,000 feet and 2.64 inches equals one mile on the map. Along with terrain features, this is useful information when studying deeds and trying to determine exact location of property.

State county maps are also extremely useful in that roads, buildings cemeteries and other features can be found. Although the county maps do not show the terrain elevation details that are shown on the USGS topo maps. Comparing the two with the land deeds can certainly help pinpoint the land of your ancestors.

There is a wealth of information that can be found and ordered from the USGS on their website <http://www.usgs.gov/> You need only go to their home page, select "Maps, Imagery, and Publications", to find the map dealers closest to you and order through them.

Thanks, Kenneth Lyon, for me giving permission to reprint your article. Ruth Filbert

IN MEMORY OF

Two members of the Reno County Genealogical Society have recently died. Their obituaries are printed below.

ELIZABETH L. RILEY

Elizabeth L. "Betty" Riley, 80, died Dec. 7, 2008, at Promise Regional Medical Center, Hutchinson.

She was born July 19, 1928, in Dodge City, the daughter of Earl C. and Mussetta Ford Smith. She graduated in 1946 from Dodge City High School, attended Adela Hale Business College, Hutchinson, and Hutchinson Community College. A resident of South Hutchinson since 1964, she had been a clerical worker at Republic Paperboard for 28 years.

She belonged to South Hutchinson Christian Church, Hutchinson Gem and Mineral Society, was a Girl Scout Leader in Dodge City, a 50 year member of Phi Beta Psi Sorority, and the Reno County Genealogical Society.

On April 18, 1948, she married Morris M. "Bud" Riley in Dodge City. He died July 4, 2005.

Survivors include: three sons, Kenneth and wife Kenna, Bob and wife Trudy, all of Hutchinson, and Phillip, South Hutchinson; a daughter Peggy Riley, South Hutchinson; a brother, Earl C. "Bud" Smith, Prairie Village; four granddaughters, Jenny Burns and husband Matt, Jessi Riley, Katie Riley, and Robyn Riley; and a great-granddaughter, Miley Burns.

She was preceded in death by a brother, Bill Smith, and a sister, Patricia Anderson.

Graveside service will be at 2 p.m. Friday Dec. 12, 2008 in Maple Grove Cemetery, Dodge City, with Keith Shrum presiding. Visitation will be from 9 a.m. to 9 p.m. Wednesday and Thursday at Elliott Mortuary, Hutchinson. Memorials may be sent to Phi Beta Psi Sorority, in care of the mortuary. Visit www.elliottmortuary.com to leave personal condolences for the family.

JAYNE M. PURCELL

Jayne Marie Purcell, 82, died Jan. 10, 2009, at Northwest Community Hospital, Inverness, Ill. She was born Oct. 13, 1926 in Grand Rapids, Mich., the daughter of Ben and Prudence Dykman Koepke. Jayne lived most of her adult life in the Hutchinson area. While at Mennonite Manor, South Hutchinson, Jayne became an expert quilter and won numerous ribbons at the Kansas State Fair. She made several quilts that were donated to the annual Mennonite Manor quilt auction. As her children and grandchildren married she would make a unique "marriage quilt" for them. Following the death of her husband, Joe, she moved to the Chicago area to be near her daughter.

She belonged to the First Christian Church, Hutchinson.

On Sept. 24, 1949, she married Joe C. Purcell in Hutchinson. He died March 12, 2004. Survivors include: a son, Toy, McKinney, Texas; a daughter, Marji Purcell Gates, Wheaton, Ill.; grandchildren, Todd Purcell, Winfield, Kris Purcell, Wichita, Wil Purcell, Winfield, Sarah Gates, Wheaton, Ill., and Dawn Warner, McKinney, Texas; great-grandchildren, Victoria, Marilyn, and Cannyon; many nieces and nephews; and a sister, Elizabeth Schnurr, Caladonia, Mich.

She was preceded in death by her siblings, Ken Stevens, Ben Koepke, and Crystal Streelman.

Cremation has taken place. Celebration of her life will be held this spring in Burrton. In lieu of flowers, memorials may be sent to the donor's choice, in care of Elliott Mortuary, Hutchinson.

Visit www.elliottmortuary.com to leave condolences for the family.

Ruth Filbert adds: Jayne Purcell was the first editor of "The Sunflower". I can remember going to her house and sitting on the floor with other members as we put the pages of the quarterly together. Jayne set a high standard for the editors that followed.

Pioneer Reunion

Turon Holds Big Reunion

Two Steers Barbecued; Whiskers Paraded

Turon - Two steers were butchered for the free barbecue held this noon at the Turon pioneer reunion. Main street was the picnic grounds and midway, the entire street through the business district being taken up with the rides and midway attractions.

Boxing contests, sports and stunts this afternoon will be followed tonight by a drill by the Hutchinson American Legion drum and bugle corps, old fiddlers contest and pioneer days dance.

Mrs. Boles Queen

Mrs. Mort Boles was chosen queen of the pioneer picnic, as the oldest woman resident of the community. She has lived here since November 1873, when the family located in Miami township. She was the former Lydia Bellew. Mrs. E. A. Wright, (Emma Terry), who has lived here since 1876 won the second prize in this contest.

Mrs. J. J. Lamont, who has resided here since 18979 won first prize for best costume. She wore a dress more than 40 years old. Mr. And Mrs. Phillip Simon were the finest old couple in costume, wearing the wedding garments which they wore 43 years ago when they married at Natrona, Pratt county.

On Claim 65 Years

First prize as oldest Reno county homesteader registering was Eldon R. Watkins, who settled on a claim in Loda township in 1874, and has lived there ever since. Oldest native Kansan registering was B. E. Peiper, born in Kansas in 1869. Mrs. Frances McHone was the oldest native Kansas woman, born in Kansas in 1864.

In the float parade yesterday afternoon the covered wagon entered by the Turon Sales Co. took first prize. The Boy Scouts won the first prize in the junior group, for their first aid display, in the parade.

The Whiskers club paraded the Main street today. This club is composed of men of the community wearing whiskers and dressed up in pioneer outfits. Mayor George Forney, President Vernon Foulk, of the Chamber of Commerce, Editor L. P. Millspaugh, Town Marshall W. W. Zink and E. A. Dautrich, secretary of the Chamber of Commerce, all with be-whiskered faces and attired in pioneer garb led the parade.

The Sylvia, Preston and Turon bands were making music for the pioneer festival last night and today.

Pictured on front page: Mrs. Mort Boles, pioneer queen and W. B. Bonnicksen, of the Whiskers club. Mr. Bonnicksen is pictured with a powder horn passed down through the Bonnicksen family from frontier days.

Hutchinson News, October 10, 1939

The Childs Family

Submitted by Margaret Childs



Eleanor Ratcliff (1826-1889) came from a long line of Quakers, migrating from North Carolina to Ohio to Indiana. She married James Mitchell Childs, who died in 1875. Their oldest daughter, Margaret, married Jacob Cox while in Indiana. After Eleanor's husband died she joined a migration of the Cox family to Kansas settling in Kingman County, Kansas. The Cox family was among the first settlers in Rochester Township, living in a dugout cave the first winter. Along with her oldest son, Abner Vincent Childs, Eleanor lived in western Reno County, at one time living in the Indian lands which were situated close to Laredo Community. When she died in October of 1889, Eleanor was living in the Peace Creek area and is buried in the Peace Creek Cemetery on the county line of Stafford and Reno County.

Her son, Abner Vincent Childs, married Rose Hartman, March 14, 1886. At one time Abner was the foreman for the Avery Ranch, south of Sterling. Rose was postmaster of the Avery Post Office. They had four children. Their youngest son was William D. Childs who married Gladys Smith of Sterling. W.D. Childs was a milk hauler for many years and at the time of his death in 1973, he had recently retired as manager of Memorial Park Cemetery. "Bill" and Gladys had 7 children.



Top: Eleanor Ratcliff Childs

Left: Abner Vincent Childs

Right: Rose Hartman Childs



Left: W. D. & Jessie Childs

Right: W. D. & Gladys Childs



Heritage Recipe

Shared by Sally Eubanks



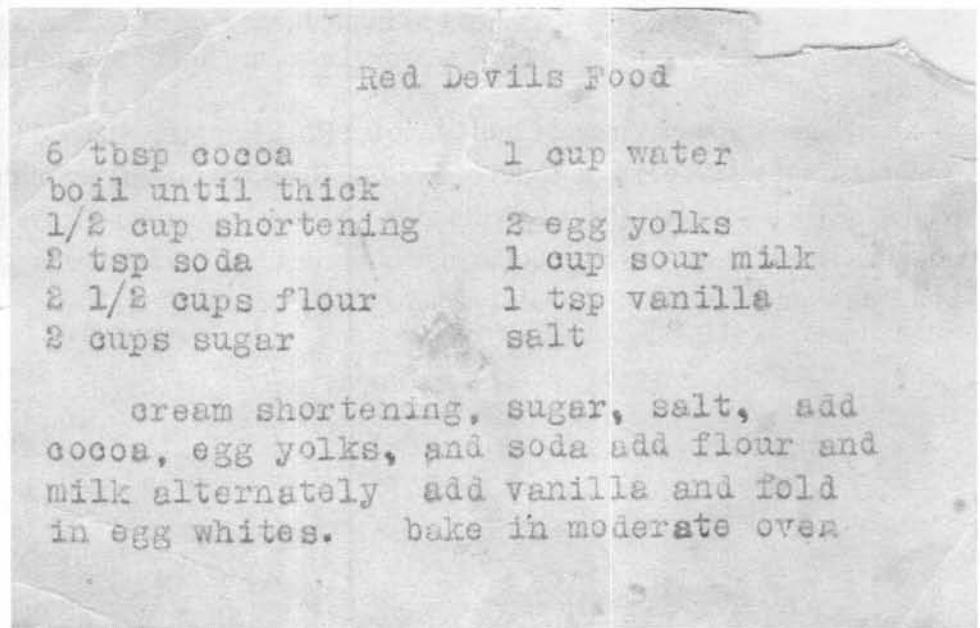
Sallie Hickman Humiston

B: 8/30/1876

D: 10/31/1949

Buried: Eastside Cemetery

This is my paternal grandmother's chocolate cake recipe which is still used today. My mother, Pauline Griggs Humiston, got this recipe from her mother-in-law, Sallie Hickman Humiston. The recipe card shown here was my mom's copy. The instructions for this recipe today would read like this: Boil the water and cocoa until thick. Cream shortening and sugar, add egg yolks. Mix until blended. Add cocoa mixture and milk. Add flour, soda, salt alternately with milk [add a bit of vinegar to milk to sour]. Add vanilla and fold in the egg whites beaten stiff. Grease 9 x 12 pan and bake at 350 until toothpick comes out clean. I start checking at 25 minutes.



Sally and Phyllis Long with their grandmother Thanksgiving 1946.



Sally and cousin Phyllis Long, RCGS members, 2008.

Henry S. Thompson

Henry S. Thompson, president of the Kansas State Fair, one of the most prominent ranchmen of Reno county, the man who fostered the pleasant village of Sylvia from the time it was nothing but a bare plan on a sheet of paper to its present prosperous proportions, and who also has taken a prominent part in most of the forward-looking movements which have added to the general welfare of this region any time during the past thirty years, is a Kentuckian by birth, but has lived in Reno county since 1882, and is very properly looked upon as one of the pioneers in the wonderful work of developing this favored section of the state. He was born in the city of Louisville, Kentucky, on January 13, 1851, son of Alfred and Emily (Hall) Thompson, the former of whom was a well-to-do market gardener, as well as a greenhouse and nursery man, who owned the first nursery in the state of Kentucky, this nursery being located on the ground on which the present city of Louisville is built. Mr. Thompson's father and mother were both of English origin, natives of the Isle of Wight.

Henry S. Thompson received his education in the public schools of Louisville, and in 1882 came to Reno county, Kansas. In company with some other men from Kentucky, he purchased about eighteen thousand acres of land from the railroad company for a cattle ranch, and served as manager of the great ranch known as the "Anderson Ranch." In 1891 this ranch was sold and the land subdivided, and at that time Mr. Thompson purchased his present ranch containing seventeen hundred acres, on which he now lives.

From the very beginning of his residence in Reno county, Mr. Thompson has taken a very active interest in the development of the western part of the county and about 1885, no long after coming here, formed the town company which was organized to build the town of Sylvia. When the townsite was located he succeeded in having the line of the Kinsley branch of the Atchinson, Topeka & Santa Fe Railroad surveyed through Sylvia and the future of the town was thus assured. From the beginning of the days of the old county fair here, Mr. Thompson was one of the leaders in that movement, and when the old fair ground was converted to the uses of the Kansas State Fair, he was one of the most active promoters of the latter enterprise and has been so for years. He now is president of the Kansas state fair, located at Hutchinson, and is very properly looked upon as one of the leading agricultural experts in the Southwest. He is also a member of the state board of agriculture.

On June 13, 1885, Mr. Thompson was married in the house where he now lives to Mary Shepherd, a native of Ohio, the daughter of Nathan and Lucinda (Mardis) Shepherd. Mrs. Thompson's father was an early settler of Reno county, largely interested in cattle while living in Ohio, and served as manager of the "Thompson Ranch" after coming to Kansas. Mr. and Mrs. Thompson have no children of their own, but have reared to womanhood their niece, Miss Grace Shepherd, a young lady of rare artistic talent. Mr. Thompson has always taken an active interest in politics, and served his district in the Legislature in 1905, 1907 and 1911. He is a member of the Benevolent and Protective Order of Elks at Hutchinson, and both he and his wife are earnest members of the Methodist Episcopal church at Sylvia.

Source:

The History of Reno County, Kansas

By Sheridan Ploughe, 1917

Typed by Melody Morgan



1916 HUTCHINSON GAZETTE ITEMS

Sunday Morning, March 19, 1916 -- Yoder

Mr. and Mrs. **Art Bays** are the proud parents of a little girl born last Thursday, to whom has been given the name Alitha Eliza.

Mr. and Mrs. **Herman Brower** are the proud parents of a little boy born last Wednesday, to whom the name Milton has been given.

Dec. 14, 1916

Miss Pearl Lawrence, aged 24, died at the home of her mother, Mrs. Elizabeth Lawrence, 705 Fourteenth west, late Tuesday evening, after a short illness. Miss Lawrence was a stenographer, and worked until a few weeks before her death. Her family did not know she was very ill, until taken to her bed.

Besides her father, William S. Lawrence she leaves four brothers and three sisters. William E., Fred, Earl and Flarey Lawrence and Mrs. Lillian E. Heap, Mrs. Myrtle Deverick and Miss Violet Lawrence. Pending the arrival of relatives the funeral arrangements have no be completed.

Mrs. E. P Husted, aged 47, died at her home, 427 Sherman west, yesterday evening, after a long illness. Mrs. Husted was taken sick January 7th, 1916, and has been at the hospital a number of times, but medical skill could not restore her health and strength.

Mrs. Husted was born in Decatur, Illinois, and her mother, Mr. A. A. Conover, still resides there. Besides her husband and mother, she leaves one brother, J. A. Conover of Joliet, Ill., and four sisters, Mrs. M. G. Nusser, of California; Mrs. Mattie Brown, of Oklahoma; Mrs. Lillian Eymann, of Joliet, and Mrs. Anna Bowling, of Decatur.

No funeral services will be held in Hutchinson, as the body will be shipped to Decatur Friday morning. The body will be at the Johnson & Sons funeral parlors after 3 o'clock today, so that those who care to may view the remains.

Mr. and Mrs. Husted have been married about fifteen years, and came here from Wichita about two years ago.

Mrs. Sarah Cromwell, aged 90, died at the home of her daughter, Mrs. Lodiema McLane, at Fowler, Kansas. G. L. McLane of Hutchinson is a grandson. Mrs. Cromwell was born in Belmont county, Ohio, but has resided in Kansas for many years. The body arrived here from Fowler yesterday noon over the Rock Island, and was transferred to the Santa Fe, to be taken to Peabody, her former home, for burial.

Mrs. Mary Frances Danforth, aged 74, died at the home of her sons, 1007 North Jefferson, yesterday morning at 9:30 o'clock after a long illness from typhoid fever. Mrs. Danforth was born in Hamilton, Ohio, in 1832, and came to Kansas many years ago. She has not been a resident of Hutchinson, very long, having come here several months ago to make her home with her sons, who opened a wall paper store on North Main street this fall. The body was shipped to Clarksville, Missouri, last night, for burial.

Dec. 16, 1916

Andrew J. Lentz, aged 85, a retired farmer, died yesterday morning at 9:10 o'clock at the home of his daughter, Mrs. W. J. Rutledge, 407 B west. Mr. Lentz was born in Ohio, April 24, 1831. In 1852, he married Miss Catherine H. Hyte, who died three years ago. He moved to Iowa just before the Civil war, and served in Company H, 28th Iowa Infantry.

The family came to Kansas in 1878 and settled in Reno county. He left the farm and moved to Hutchinson after the death of his wife. Mr. Lentz suffered a stroke of paralysis several years ago, but has been sick for past eight weeks with bladder trouble. He did in a chair while waiting for his daughter to come from Abbyville to see him.

Four daughters and three sons survive, Mrs. W. J. Rutledge of 407 B west; Mrs. Eli Davidson, of Stafford; Mrs. H. A. Fenn, of 417 B west; Mrs. Jennie McIven, of Abbyville; Charles Lentz, of Cimarron; F. H. Lentz, of Arlington and William Lentz, of 529 B west. The funeral services will be held Sunday afternoon at 2 o'clock from the Methodist church at Abbyville.

The funeral services over the remains of **D. S. Lusk** will be held this afternoon at 2:30 from the Congregational church at Partridge. Burial will be made in the Partridge cemetery

Dec. 17, 1916 - Arlington

Mrs. Will Long died at her home in this city Wednesday. A short funeral service was held at the house Wednesday evening and the body was shipped to Arkansas for burial, Thursday. Mrs. Long leave to mourn her loss a large circle of friends here, a husband, and four children and many relatives in Arkansas.

Old Grave No Worry To Him

"Not Superstitious," Declares M. J. Reynolds

When a moldering grave, estimated by police to be a half century or more old, was uncovered late yesterday in the 600 block West Ninth Street, Melvin J. Reynolds, 620 West 11th St. who will live in the approximate location of the long buried box, was undaunted.

His son Ferguson Reynolds, city fireman is building a home on the site, and basement apartment will be fitted for the father.

"But I am not superstitious," the elder Reynolds declared. "I'll live right in his cemetery," he exclaimed, pointing at rust - crusted square nails, scraps of decayed cloth and white sediment that once was bone. "There's no more left there than a badger hole, anyway," he said.

Reynolds was right. When he peered over the edge of the excavation, it was at a body and coffin returned to dust. Nearly all of the former grave had vanished, and was mixed with dirt. The wood box was crumbled fibers. Police who were called to the scene poked with a stick and found a square of almost disintegrated wood that was the end of the box. Police saw no need to call the coroner, and the workman were allowed to continue their excavation.

Hutchinson News, Tuesday, May 18, 1937, Page 6

Submitted by Kathleen Dankanyin

Funeral Bill of Charles W. Peckham

Statement		
Haven, Kansas, 6-21-1928		
M. Guy W. Astle		
Hutchinson, Kans.		
IN ACCOUNT WITH		
The Graham Furniture Company		
6-21-28	Casket	178 ⁰⁰
	Springfield Vault	100 ⁰⁰
	Embalming	25 ⁰⁰
	Shaving and	5 ⁰⁰
	Washing and Dressing	
	Funeral Coach	25 ⁰⁰
	Flowers (Pillow)	15 ⁰⁰
Cash item	Opening and	
	Closing Grave	12 ⁰⁰
	Graving Grave	5 ⁰⁰
	use of Grass	8 ⁰⁰
	Personal Services	15 ⁰⁰
Cash Items paid at request of family	Congregat'l Ch.	10 ⁰⁰
	Rev. Ledyard	10 ⁰⁰
	" Herbert	5 ⁰⁰
	" Davidson	5 ⁰⁰
		<u>418⁰⁰</u>

The family of Charles W. Peckham was featured in the November 2008 issue of The Sunflower. I did not have room to include a copy of his funeral bill that was sent to his son-in-law, Guy W. Astle.

This was of interest to me because this type of documentation isn't always saved through the years and it identifies a furniture company as handling the services listed. This was common for the time period given. Many furniture companies also held the records for the local cemetery.

Translation Tools

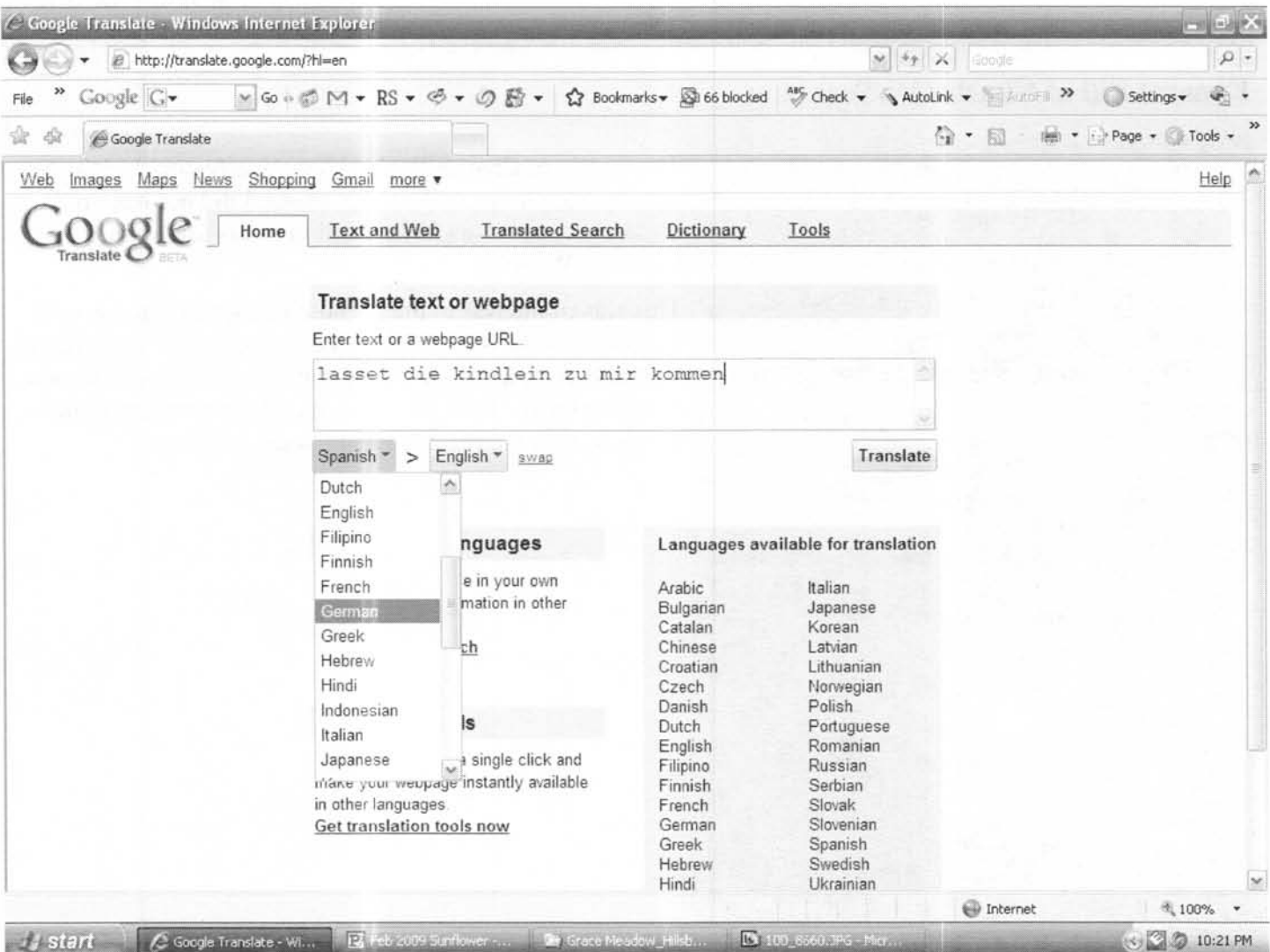
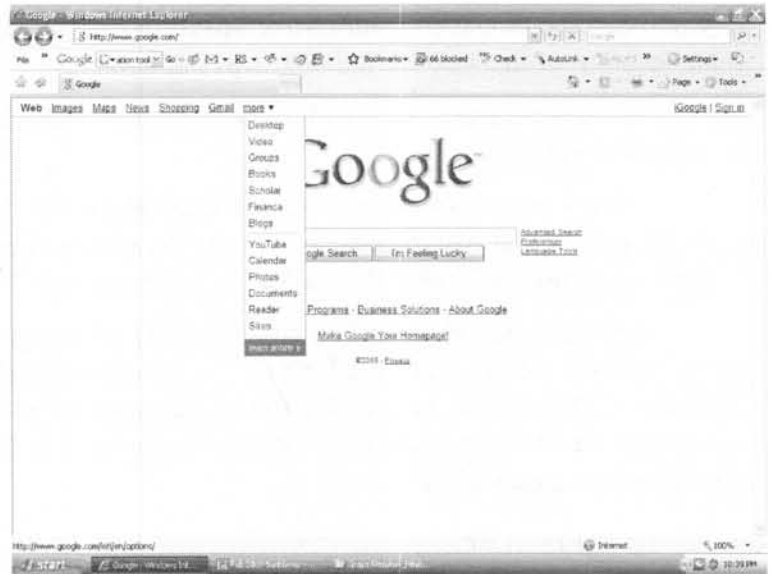
I often find text or an inscription written in a language other than English. One tool you can use to translate the text is the translation service at Google [www.translate.google.com]. See the larger screen shots where I translated the inscription on the tombstone of an infant.

Google also offers *language tools*. Here you can translate text or enter the URL of a web site and have it translated. [www.google.com/language_tools].

I did find that some words did not translate well. Perhaps this will improve in the future.

If you use a different translation tool please share that information with your fellow members. You can send us an email at:

RenoCoGenSoc@gmail.com



Grave of **Elisabet Schmidt**

Born: 8/9/1900

Died: 8/19/1900

Buried: Grace Meadow Cemetery, Marion County, KS

Inscription: Lasset die kindlein zu mir kommoen =

Let the little children come to me.

Psalm 24:3



Google Translate - Windows Internet Explorer

http://translate.google.com/translate_t?hl=en#de|en|lasset%20die%20kindlein%20zu%20mir%20kommen

File » Google G Go M RS Bookmarks 66 blocked Check AutoLink AutoFill Settings

Google Translate

Web Images Maps News Shopping Gmail more Help

Google Translate **Home** Text and Web Translated Search Dictionary Tools

Translate text or webpage

Enter text or a webpage URL

lasset die kindlein zu mir kommen

Translation: German » English

Let the little children come to me

German > English swap Translate

[Suggest a better translation](#)

[Google Home](#) - [About Google Translate](#)

©2008 Google

Internet 100%

start Google Translate - Wi... Feb. 2009 Sunflower ... Grace Meadow_Hilb... 100_B660.JPG - Micr... 10:22 PM

Wm. J. Olmstead Dead

The old soldiers of the Civil War will soon be only memory and a part of history; death at whom they laughed on the field of battle is silently and without the shouting and the tumult gathering them to their rest. Since coming here about a month ago we have chronicled the death of half a dozen veterans, and this week we announce the death of another, Wm. J. Olmstead.

William J. Olmstead was born in White Lake, Michigan, Feb. 24, 1845 and died in Nickerson, Kansas April 18, 1913, aged 68 yrs 1 mo. and 24 days. He served as a private in the Civil War, enlisting in 1864. On Feb. 24, 1869, he was married to Elizabeth Urch, to which union were born five children: David D. and Elmer A. of New Mexico; Guy J. of Hutchinson; and Edith M. Showalter and George R. deceased. He also leaves two brothers, Oscar and Herman; and two sisters, Mrs. VanBlackum and Mrs. Ida Dickerson.

After marriage he and his wife lived in Four Towns, Mich., for three years, came to Kansas in 1878, where they have since lived. Soon after coming to Kansas, he united with Fairview Christian Church, from which place he never removed his membership.

Nickerson Argosy Thursday April 24, 1913

Obituary

Earl D. Baird was born in Alleyganey County, New York, May 15, 1826; moved to Mercer County, Pennsylvania when 16 years old. Married Catharine Gillam April 5, 1849. From this union was born three children, John Baird, now of Baton Rouge, LA. Amanda Imas of Montpelier, Ohio, and Florence E. Berry, of this place. All the children present today.

Earl D. Baird enlisted in the U. S. Army in Company K, 145 Pennsylvania Infantry, on September 15, 1862; was wounded on battlefield Fredericksburg after which he served as Provo Guard, Washington, D.C. and was discharged at close of war. Came to Kansas May 12, 1887; was a member of Perryville post G. A. R. 242 Arlington; also a member of Cable Lodge A. F. & A. M., and a member of Cable Chapter O. E. S.

Funeral services from the home of C. Lee Berry. Brief sermon by Rev. Hills of the Congregational Church and Masonic rites by Nickerson Lodge A. F. & A. M. Remains buried in G. A. R. lot in Wildmead Cemetery.

Nickerson Argosy July 25, 1901

Death of Mrs. Swanzy

Wife of J. Swanzy, Carpenter Died at Methodist Hospital.

Mrs. Minnie Swanzy, aged 35, wife of J. Swanzy, carpenter and architect, of No. 122 Fifth avenue east, died late Monday night.

Mrs. Swanzy was recently taken to the hospital to be operated on for cancer.

She was a native of England, from which country she and her husband came about two years ago and settled in Hutchinson.

She is survived by her husband and also by her mother, who is residing in England.

Funeral services will be held today at 2 o'clock p. m. from the Johnston funeral chapel. Rev W. B. Stevens will preach the funeral service. Burial will be at Eastside cemetery.

Hutchinson Gazette, January 26, 1916

LINKS

- www.deathindexes.com
- Old Occupations: <http://www.rootsweb.ancestry.com/~wiaslan/occupations.html>
- <http://www.ourtimelines.com/>

Do you have a suggestion for a web site that we can share with our members?

Send it to: RenoCoGenSoc@gmail.com

Forgotten Settlers of Kansas Certificate Program



Descendents of early Kansans are encouraged to submit applications for the following type of certificates:

- **Territorial** - ancestor lived in Kansas prior to 1/29/1861
- **Pioneer** - ancestor lived in Kansas between 1/29/1861 - 12/31/1880
- **Early Settler** - ancestor lived in Kansas between 1/1/1881 - 12/31/1900

Following certification, with permission granted, the application and pedigree chart will be printed in a Forgotten Settlers of Kansas publication. Applications and proof materials are contributed to the manuscript section of the Kansas State Historical Society's Center for Historical Research.

The Kansas Council of Genealogical Societies, Inc. is an umbrella organization for Kansas genealogical and historical societies, as well as interested individuals.

KCGS: <http://skyways.lib.ks.us/genweb/kcgs/>

PUBLICATIONS ORDER FORM

1880 Census of Reno County	\$18.00
Births - Recorded Early Births of Reno Co. 1890-1911 & Index	\$17.00
Cemetery Book of Reno County, 1865-1978	SOLD OUT
Cemetery Records of North Inman, Superior Township, McPherson County, KS	\$7.00
Deaths - Recorded Deaths of Reno County 4 volumes, 1890-1911 & Index	\$17.00
Homestead Records of Reno County Name, location & file date 1875-1945	\$21.50
Marriages of Reno County, 1872 - 1913	\$23.00
Naturalization Records of Reno County Index 1875-1955 filed at courthouse	\$12.50
Teachers of Reno County, 1884-1966	\$21.00
<i>The Sunflower</i> Back Issues - CD ONLY CD 1: 1979 to 1993 CD 2: 1994 to 2007	\$ 5.00 ea
Harper's Weekly 1888 - City of Hutchinson - featured supplement - PDF on CD	\$5.00
Plat Book of Reno Co. 1902 - PDF on CD	\$10.00
Postage & Handling included in price Kansas residents add 7.05% sales tax	

To order a publication - clip and return to:

RCGS - P. O. Box 5
Hutchinson, KS 67504-0005

Name: _____

Address: _____

City: _____

State: _____ Zip: _____

Email: _____

Circle or highlight the items you are ordering

Total amount enclosed: \$ _____

Make checks payable to Reno Co. Gen. Soc.

Members receive \$1 discount on publications



RCGS MEMBERSHIP**Member Benefits**

- Four [4] issues of our quarterly "*The Sunflower*" - Published in Feb., May, Aug., & Nov.
- Free Queries in *The Sunflower* [limit 50 words]
- Monthly eNews – communicating meeting review & reminders, time sensitive data and other informative news.
- 11 monthly programs - both educational and fun
- 1 free hour of research
- Vote in annual election
- Surnames for Reno County ancestors posted on RCGS website
- Surname research profile [outside of Reno County] posted on RCGS website
- Discount on publications [\$1.00 per publication]
- List and link on RCGS website to member website [genealogy related]

Level 1 - \$12 Basic**Level 2 - \$15 Community Connection**

Level 2 memberships support our community connection projects, such as, but not limited to: free genealogy workshops, books or microfilm placed in the library, marking an unmarked grave and working with other organizations to promote genealogy.

Membership requests received after August are applied to the following year and a complimentary November quarterly is mailed.

Complete for New, Renewal or Gift Memberships

Name: _____

Address: _____

City: _____

State: _____ Zip: _____

Email: _____

Reno County Surnames: _____

RESEARCH CENTERS**RCGS Research Services**

RCGS offers 4 Options - see our website for details

- 1) One record search for 5 names
- 2) *The Sunflower* article copies
- 3) Basic one-hour research service
- 4) Cemetery Photos

Hutchinson Public Library

901 N. Main

Hutchinson, KS 67501

620-663-5441

Mon - Fri 9:00 am to 9:00 pm

Sat 9:00 am to 6:00 pm

Sun 1:00 pm to 5:00 pm

www.hutchpl.org**Hutchinson Family History Center**

518 E 43rd Street

Hutchinson, KS 67502

620-665-1187

Tues 1:00 pm to 8:30 pm

Wed 9:30 am to 5:00 pm

Thur 9:30 am to 5:00 pm

Kansas State Historical Society

6425 SW 6th Street

Topeka, KS 66615-1099

785-272-8681

www.kshs.org**Reno Co. Historical Society & Reno Co. Museum**

100 S. Walnut

Hutchinson, KS 67501

620-662-1184

Tues to Sat 9:00 am to 5:00 pm

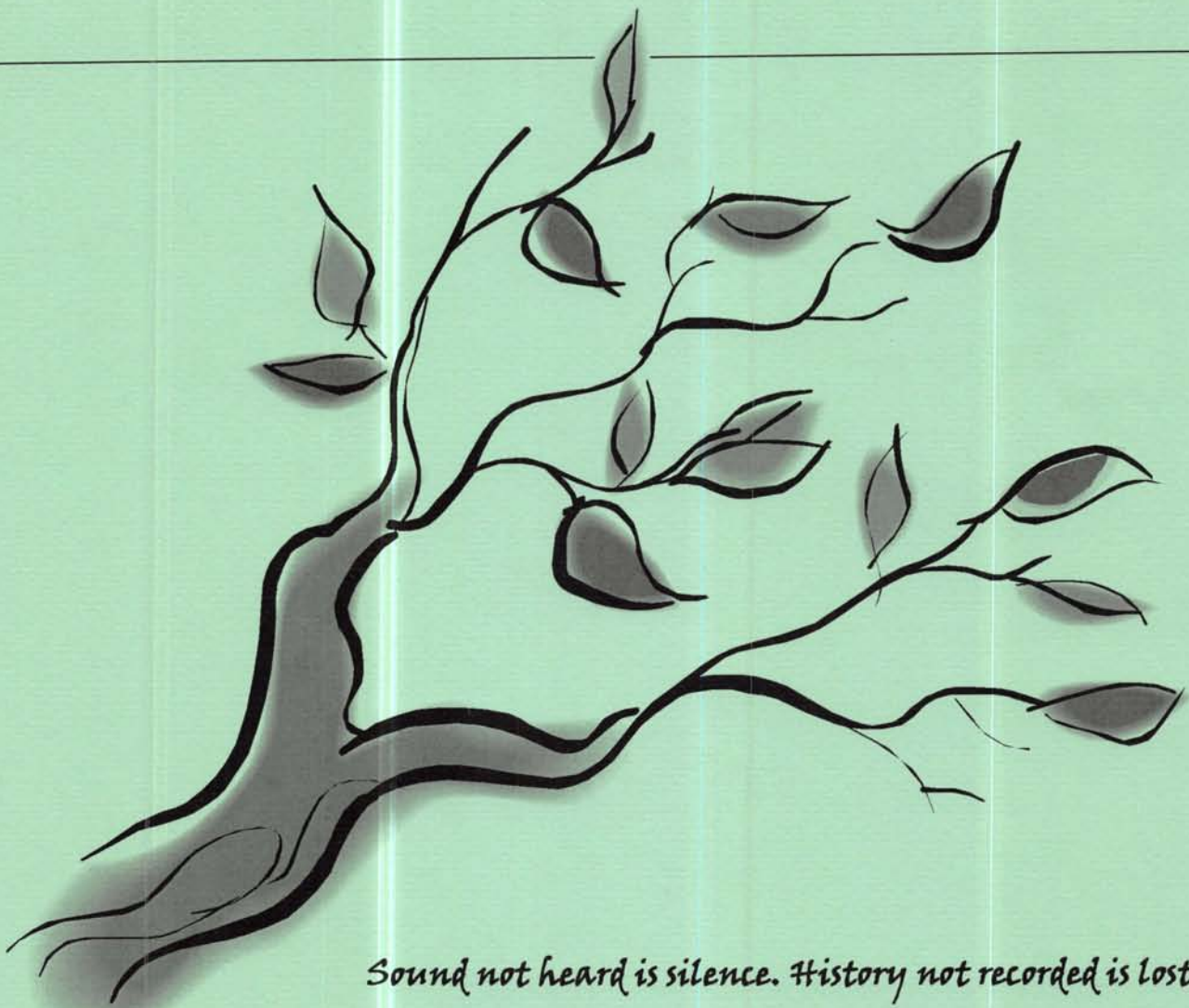
Sun 1:00 pm to 5:00 pm

http://www.renocountymuseum.org/Home_Page.php**Thank you for supporting RCGS!**

SURNAME INDEX

Albright	6	Coleman	13	Friend	13	Johnson	11	Morgan	7,19	Sours	7
Anderson	12,15	Conover	20	Friesen	12	Jones	12	Neighbors	12	Stevens	15,24
Anthony	7	Cox	17	Frisch	12	Joslin	12	Neufeld	12	Stevenson	12
Applegate	12	Crawford	11	Gaeddert	12	Karr	12	Nusser	20	Stoever	7
Astle	21	Cromwell	20	Gardner	13	Kerns	13	Olmstead	24	Streelman	15
Auckland	7	Danforth	20	Gates	15	Keyser	7	Owen	13	Strickler	7
Avery	12	Dankanyin		Geiss	12	Kiblinger	7	Patton	13	Sullivan	9
Baer	12	21,24		Gillam	24	Kinder	13	Pearson	13	Swanzy	24
Baird	24	Dautrich	16	Glass	12	Koepke	15	Peckham	21	Switzer	12
Baker	7	Davidson	13,20	Goddard	12	Kollhoff	7	Peiper	16	Taber	12
Ballard	12	Davolt	13	Goering	7	Koons	13	Ploughe	19	Terry	16
Barr	12	Dean	12	Graber	7	Koontz	7	Plush	12	Thompson	19
Bays	20	Deck	13	Graham	21	Lager	6	Price	7	Tidler	7
Bellew	16	Dester	13	Greathouse	6	Lamont	16	Printz	7	Tolliver	12
Benscheidt	12	Deverick	20	Green	12	Lawrence	20	Puckett	13	Totten	11
Berry	24	Dickerson	24	Griffin	12	Lawson	12	Purcell	15	Urch	24
Birdsall	7	Diehl	7	Griggs	6,18	Learned	12	Quiring	13	VanBlackum	24
Bishop	12	Doles	13	Gunn	13	Lentz	20	Ratcliff	17	Wall	4
Boes	12	Dollarhide	14	Hall	12,19	Leonard	12	Reynolds	21	Warner	15
Boles	16	Drake	13	Hamilton	12,13	Lightner	13	Riley	15	Watkins	16
Bonham	12	Duggan	6	Harden	7	Lincoln	12	Rohleder	7	Wells	12
Bonnicksen	16	Dullman	12	Harper	12	Linscheid	12	Rutledge	20	Whipple	13
Bowling	20	Dykman	15	Hartman	17	Long	18,20	Sage	6	Whitlock	7
Bradley	12	Eales	13	Heap	20	Lusk	20	Schmidt	13,23	Wilson	12
Bramwell	12	Edwards	12	Hildinger	12	Lynn	12	Schnurr	15	Wright	7,16
Brower	20	Etrong	12	Hill	12	Lyon	13	Seyb	12	Yaggy	13
Brown	7,12,20	Eubanks	18	Hinman	7	Lyon	14	Shamhart	12	Yerkes	13
Bruch	12	Eyler	7	Holaday	12	Maltby	13	Shane	12	Yoder	12
Burgess	4	Eyman	20	Hollingsworth	13	Marble	12	Shank	11	Zink	16
Burns	15	Faler	13	Holloway	13	Mardis	19	Sharp	13		
Burriss	12	Fearl	11	Humiston	18	Matson	7	Shepherd	19		
Buskirk	13	Fenn	20	Husted	20	McAllister	7	Showalter	24		
Cavanaugh	7	Filbert	4,24	Huxman	12,13	McIven	20	Shultz	7		
Childs	17	Ford	15	Hyte	20	McLane	20	Siler	12		
Chin	13	Forney	16	Imas	24	Millsbaugh	16	Simes	13		
Christman	12	Forrester	12	Insley	7	Moore	7,11	Simon	16		
Clark	12	Foulk	16	James	7,12	Moorman	7	Smith	12,15,17		

Moving? Please notify us of your new mailing address. *The Sunflower* is NOT forwarded.



Sound not heard is silence. History not recorded is lost!

**RENO COUNTY GENEALOGICAL SOCIETY
P. O. BOX 5
HUTCHINSON, KS 67504-0005**

RETURN SERVICE REQUESTED



NON PROFIT
ORGANIZATION



UNITED STATES POSTAGE



FINNEY BOWES

02 1A

0004306048

\$ 00.42⁰

FEB 2009

MAILED FROM ZIP CODE 67203

M-53 Dec-08
McMannis, Darren J.
P O Box 387
North Newton KS 67117-0387