



THE SUNFLOWER

Reno County Genealogical Society

P. O. Box 5

Hutchinson, Kansas 67504-0005

ISSN 1048 - 048X



Volume 29, No. 4

November 2007

The Reno County Genealogical Society of Hutchinson, Kansas was founded in 1978 for the purpose of fostering genealogical research, promoting the exchange of information and encouraging the deposit of genealogical and historical materials in established libraries and archives. Membership in the Reno County Genealogical Society is open to anyone interested in genealogy. Dues are \$12.00 per year, per family from January 1 to December 31 each year. Meetings are held the third Monday of each month [except December / noted otherwise] in the Children's Reading Room of the Hutchinson Public Library, 9th and Main, 7:00 – 9:00 P. M.

RCGS 2007 Officers

| | |
|-------------------------|----------------|
| President | Ruth Filbert |
| Vice President * | Karen Burgess |
| Treasurer | Jim Stoecklein |
| Recording Secretary | Sally Eubanks |
| Corresponding Secretary | Jo Heller |

[* Includes Program & Membership Chair]

RCGS 2007 Committees

| | |
|---------------------------|--------------------|
| Historian | Rita Lingg |
| Obit Coordinator | Kathleen Dankanyin |
| Publication Sales | Sandy Wedman |
| Quarterly & E-News Editor | Gale Wall |
| Research Chairman | Rita Lingg |
| Web Coordinator | Gale Wall |

Please volunteer for our Research Team

RCGS Email: RCGS@cox.net

RCGS Web Site:

<http://rootsweb.com/~ksrcgs>

KCGS Web Site:

<http://skyways.lib.ks.us/genweb/kcgs>

The Sunflower is published quarterly by the
Reno County Genealogical Society
P. O. Box 5 - Hutchinson, KS 67504-0005
ISSN 1048 - 048X

Editor: Gale Stafford Wall, Hutchinson, KS

Volume 29, No. 4, November 2007

The Sunflower is indexed in the PERiodical Source Index [PERSI] of the Allen County Public Library Foundation

The Sunflower welcomes your articles and photographs on your Reno County ancestors.

- Email to: RCGS@cox.net
- Mail to: RCGS - P. O. Box 5 - Hutchinson, KS 67504-0005
- Assistance is available in formatting your submissions
- Submissions are subject to editing and space availability

Deadlines

| <u>Issue</u> | <u>Due by</u> |
|--------------|---------------|
| Feb | 12/5 |
| May | 3/5 |
| Aug | 6/5 |
| Nov | 9/5 |

The Reno County Genealogical Society is a member of the Federation of Genealogical Societies and the Kansas Council of Genealogical Societies.

| IN THIS ISSUE | |
|---|---------|
| President's Message / Reno Records | 88 |
| News & Notes - Dates To Remember / RCGS 2008 Programs | 89 |
| Editor's Note / New Members / On The Cover | 90 |
| Membership News / News Cont'd | 91 |
| Pioneers & Settlers of Reno County | 92-93 |
| Veterans | 94-95 |
| Photos & Postcards | 96 |
| Creative Ideas to Display & Share Your Family History | 97 |
| October Potluck & Favorite Ancestor Story | 98 |
| Kansas State Fair | 99 |
| Land Records | 100 |
| In The News | 101 |
| Biographies & Family Records - Ora May Allen Glass | 102-103 |
| Cemetery Corner | 104-105 |
| School Days | 106 |
| Volunteers | 107 |
| Obituaries | 108 |
| Links & More /The Secret Door / Publications Order Form | 109 |
| RCGS Membership / Research Centers | 110 |
| Surname Index | 111 |
| Publication List [back cover] | 112 |

**Time to renew your membership.
See page 110.**

PRESIDENT'S MESSAGE



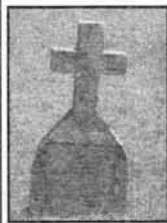
A special thanks to the volunteers who made the Kansas State Fair workshops a success. Karen Burgess gave two Internet sessions and they were very popular. Land Record Research by Harvey County Register of Deeds, Margaret Hermstein, drew many interesting questions that made us do some thinking. Rene Cole of the Hutchinson Family History Center gave the Census Research session. I was pleasantly surprised at the start of the Beginning Genealogy sessions so many people in the audience were just starting or wanted to know how to start their family history research.

Margaret Childs, Vivian Gobin, Rita Lingg, Jim Stoecklein, Gale Wall and Sandy Wedman helped from planning the workshops, passing out the registration sheets and handouts, setting up before the sessions and answering questions. Pam and Lynn Stansel loaned their microphone to us and it certainly helped Wednesday when Karen was giving her internet talk. If I've missed someone please accept my apologies. Classes were free and attended by over 125 people from 29 different counties in Kansas. There were 7 states represented, KS, TX, OR, NE, VA, CT, and CO. Isn't this an interesting way to reach future genealogists? Some had their motor homes parked on the fair grounds and attended several sessions. I know that some never registered, but stood and listened for most of the session.

RCGS officers met Saturday, Sep. 29th to plan the programs for 2008. I think that you will enjoy every one of them. The state fair workshops were discussed and hopefully next year at the state fair we will have an even larger attendance. Gale Wall's program in September gave me many ideas for displaying pictures, documents, dirt (ask Gale about this one), and other family antiques. You missed a great program, if you didn't attend. Have you thought of giving a gift membership to the Reno County Genealogical Society to a relative or friend who is interested in family history? We need new members.

Happy Holidays. Ruth Filbert

RENO RECORDS



Cemetery records - Project Update: Phase one [retype our 1980 publication] IS COMPLETE. This digital copy will assist in our updating process. Phase two will be to obtain access to cemetery records. Most do not have official records and we will walk each cemetery to obtain the information from the marked graves and photograph the headstones. This phase will be long-term and volunteers are needed. **Do you know of corrections needed to the current publication?**

Special Project Help Needed

- **Newspaper Indexing** - We are in receipt of some old Reno County newspapers and need volunteers to take an issue or two home and index for our website. This will be an easy project for the winter months. If you are interested in helping please send an email to RCGS@cox.net. Local members only.
- **Plat Map Indexing** - Volunteers needed to take a PDF image of a plat map and create in index. [emailed]

RCGS Website

- Don't forget to check out the "What's New?" page of the RCGS website. This is where you can find out what has been posted since your last visit. The "Obituary Index" is almost complete and we are working toward posting all of our cemetery data, old and new, along with cemetery photos.

**Can You
Help?**

NEWS & NOTES - DATES TO REMEMBER

- Kansas Council of Genealogical Societies announces a Kansas Genealogy Blog. Read the latest at: <http://kansascouncilofgenealogicalsocieties.blogspot.com/>
If you have news of interest to Kansas researchers please send it to KCGS3858@hotmail.com.
- Several of us from RCGS have made our hotel reservations for the NGS 2008 Conference to be held May 14 - 17 2008 in Kansas City. We hope others will join us. Registration brochures will be available for download December 2007. Conference lecture topics will include:
 - * Adoption Research
 - * African American Research
 - * BCG Skill Building Track
 - * Computer Topics
 - * DNA Lectures
 - * Genealogical Essentials
 - * German Research
 - * Homesteading Records
 - * Land Records
 - * Methodology
 - * Midwest Resources
 - * Migration
 - * Military Records
 - * National Archives Records
 - * Native American Lectures
 - * Research in the States
 - * Writing Lectures
 - * and more...

See more news on page 91

Details [and list of exhibitors] can be found here: <http://www.eshow2000.com/ngs/2008/>

RCGS 2008 PROGRAMS - SUBJECT TO CHANGE

- | | |
|--|---|
| <ul style="list-style-type: none"> • 1/21 - Research & Learning Lab* • 2/18 - Research Pathways - by Karen Burgess • 3/17 - TBD • 4/21 - Treasure Quest - By Darren McMannis • 5/19 - NGS Conference Highlights & Recap • 6/16 - Through The Eyes of Young Pioneers (1) • 7/21 - Preservation Methods • 8/18 - Land Record Research - by Margaret Hermstein • 9/15 - Research & Learning Lab* | <ul style="list-style-type: none"> • 10/20 - <u>Celebrating Family History Month</u> - Join us at the Delos V. Smith Center, 101 W. 1st, 6:00 p.m. Potluck - bring your favorite dish to share Bring a family item to share for "show & tell" • 11/1 - Citing Sources - by Ruth Filbert • December - No meeting <p>*Research & Learning Lab - research session for our members & guests that want to use the subscription to Ancestry.com and other online databases available at HPL. This is a good place to also ask those "How do I?" questions in a roundtable chat. We will also provide a beginning genealogy outline for anyone new to genealogy. RCGS will pay for research copies made in the lab.</p> |
|--|---|
- (1) Kansas Humanities Program - by Marilyn Holt

EDITOR'S NOTE



By the time you receive this issue we'll be headed into the holiday season. The board met in September to begin planning for 2008. With that in mind we are asking ourselves what goals we have for the new year. For this publication I invite you to consider writing a column. It can be a repeated topic that is of interest to you, such as townships, schools, etc. or something new each issue. Help fill these pages each quarter!

For the website there are several projects that need volunteers. Two of those are listed on page 88. Our goal for the website is to become a digital repository for Reno County history and to make it a resourceful site for researchers to visit. The [volume of] information posted depends on volunteers to type material, some of which could be provided via email and other that can be picked up at the meetings. Please consider volunteering for a project.

In 2007 we were able to secure a lower printing cost for this publication. Now, with the recent postage increase we are facing almost a double cost to mail each issue. We are working to combine our mailing with that of the Kansas Council of Genealogical Societies in order to secure a rate that will hopefully be lower than our previous cost. Items like this are kept in mind as we prepare the 2008 budget. Look for that information soon.

Also, as we prepare for 2008 we can't forget that our society will celebrate its 30th anniversary next year.

Happy Holidays! We'll see you in February! Gale Wall

NEW AND RENEWING MEMBERS

Warn, Denton & Marilyn Lake - Hutchinson, KS

Welcome

Now is the time to renew your membership and give a gift membership for the holidays.

See page 110 for renewal form.

ON THE COVER

Drill, **Demonstrating Red Cross Work**, given by the pupils and teacher of Hodge School, District 105, Walnut Township, March 6th. [probably 1918].

Left to right: Red Cross Nurses: Wanita Ontjes, Verna Murphy, Vera Mosier. Liberty: Miss Mary Chew, teacher. Uncle Sam: Arthur Murphy. Soldier Boys: Max Brown, Freddie Murphy, Max Onjtes.

On the same date that the Red Cross drill was given, the teacher and patrons of Hodge School gave a play. They also sold pies, served lunches, and held auction sales of various articles, and the pupils sold popcorn in Red Cross boxes, and in balls, bringing in all a total sum of \$89.50, which will be used for Red Cross work.

Source: The Old Trail and The New, 1918

Editor's Note: Do you have an interesting photo to share for publication in The Sunflower?

MEMBERSHIP NEWS

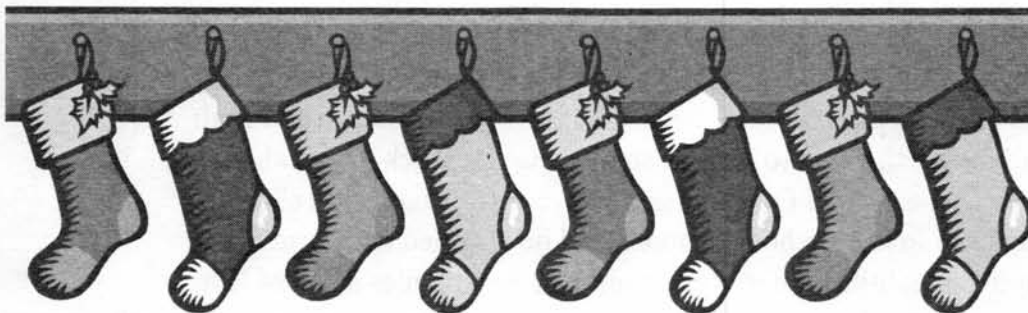
A Note from the Membership Chair



This year is almost over and it is time for membership renewals. Our society has advanced a lot this year. We now have an “up to date” and maintained website, a very excellent quarterly, *The Sunflower*, and have continued trying to give educational and entertaining programs at our monthly meetings. The membership has grown close to the one hundred mark, but we are striving to hit and maintain 125 members. As you renew your membership for 2008 think about giving a gift membership to a relative or friend. Enclosed in their new member welcome packet will be a note telling them who gave the membership. This is a great idea for a gift and a way to help your society grow. We hope you have enjoyed the benefits of being a RCGS member. Please take the time and renew your membership soon.

Karen Burgess, V.P. & Membership

Note: For gift membership orders received through the month of December a special full color gift note will be included with the member welcome packet.



NOTE: If you are not receiving the monthly E-News we do not have your email address on file!

News - continued from page 89

- In August we sent out an email indicating the need to “opt-in” to receive the board and program meeting minutes. If you would like to receive them via email send a note to RCGS@cox.net.
- We are assembling a “research team” to handle our research requests. Our Research Chairman will oversee the distribution of the requests and handle the written communication once the research is complete, as well as recruit volunteers as needed. If you are a local member please consider volunteering at least one month a year.
- Roots Television celebrated its 1st birthday in September. An online television site just for genealogy! www.rootstelevision.com. You can “select a channel” which is different categories like Irish Roots, Storytelling, Immigration, etc. The “program guide” will give you an overview of all of them.

PIONEERS & SETTLERS OF RENO COUNTY



Albert S. Fountain, M.D. Dr. Albert S. Fountain, of Castleton, this county, one of the best known physicians in Reno county and a resident of this section since pioneer days, is a native of Illinois, having been born on a farm in Sangamon county, that state, on October 21, 1869, son of J.

H. and Cassandra Maxwell Fountain, the former of whom was born in Madison county, Indiana, on August 16, 1831, and is now living retired at Arlington, this county, where he has made his home since retirement from farm life in 1900. His wife, who died on February 11, 1888, at her home in this county, was the daughter of Jeremiah Maxwell and his wife, who came to this county from Illinois in the early eighties, bought an eighty acre farm in Lincoln township and lived there until their retirement to Hutchinson, where their last days were spent. J. H. Fountain and wife were active members in the Methodist church, and he was prominent in the political life of Reno county in earlier days, having served as a member of the board of county commissioners, he having been elected on the populist ticket about 1890. They were the parents of eight children, of whom the subject of this sketch is the eldest, the others being Jessie, who married E. Adkins, of Laredo, this state; George, Carl, Homer, Lulu, Leo and Newell.

Albert S. Fountain was about six years of age when he came to Reno county from Illinois with his parents, arriving here on March 16, 1875, and he was reared on the home farm in this county, receiving his elementary education in the public schools. In early life he turned his attention to farming, and later he homesteaded a tract of land in Oklahoma, proving up his claim in January, 1901. While in Oklahoma, he took an active and interested part in the development of his community, and the town of Fountain, in that state, is named for him.

In 1902, A. S. Fountain decided to make the practice of medicine his profession, and in that year entered the medical college at Keokuk, Iowa, from which he graduated in 1906, with a degree of Doctor of Medicine, and immediately afterward opened an office in Castleton, where he has since been very successfully engaged in the active practice of his chosen profession. He has prospered in his practice, as well as in his real estate deals, and is the owner of a half section of valuable land in Dewey county, Oklahoma, besides property in his home town. Doctor Fountain gives a good citizen's attention to civic affairs, and takes an active interest in local politics.

On November 11, 1894, Albert S. Fountain was married to Maude Wolf, who is a native of Ohio, her birth having occurred in that state on February 26, 1871. She is a daughter of Roman and Ruth Hedrick Wolf, who came to Kansas in 1873, and settled on a farm about ten miles south of Hutchinson, thus being among the pioneers of the county. Mrs. Fountain's father is now living retired in Canton, Oklahoma. Besides Mrs. Fountain, Mr. and Mrs. Wolf were the parents of two children, William R. and Ralph H.



Doctor Fountain is a member of the Independent Order of Odd Fellows and of the Modern Woodmen of America, and takes a warm interest in the affairs of both these popular organizations. Both he and his wife are earnest members of the Methodist church.

Source: History of Reno County Kansas by Sheridan Ploughe, 1917



Fairview Cem. - Elmer

PIONEERS & SETTLERS OF RENO COUNTY

Herbert E. Ramsey

County Attorney Herbert E. Ramsey, an active and popular young lawyer, of Hutchinson, county seat of this county, is a native of Reno county, having been born on a farm in Reno township, December 26, 1885, the only son of Enoch M. and Nellie D. Belfour Ramsey, both natives of Illinois, and both of whom are still living in this county.

Enoch M. Ramsey owned a farm in Hancock county, Illinois, when he was married, but in 1882 he and his wife decided to come farther West and came to Kansas, locating near Larned, where they bought three quarter sections, but not being satisfied with that location shortly afterward disposed of their place and came to Reno county, buying three quarter sections in Reno township, which has been their home ever since and where they have prospered largely. Mr. Ramsey still gives close attention to the general management of his place, though practically retired from the active labors of the same. He and his wife have a pleasant home at 633 Sherman Street, east, in Hutchinson, where Mrs. Ramsey makes her home most of the time with her son, the subject of this sketch, and Mr. Ramsey alternates his time between his town house and his farm. Mr. and Mrs. Ramsey are active members of the Presbyterian church, in the various beneficences of which they take much interest, and Mr. Ramsey is a Democrat and a member of the Masonic Order.

Herbert E. Ramsey was reared on the home farm in Reno township, receiving his elementary education in the district school in that neighborhood, after which he entered the high school at Hutchinson, from which he was graduated with the class of 1906. He then entered the law office of Hettinger & Hettinger and after a course of reading there, entered the law department of the University of Michigan at Ann Arbor, from which he graduated in 1910. Upon receiving his diploma, Mr. Ramsey returned to Hutchinson, was admitted to the bar and began the practice of his profession. He was appointed assistant county attorney under E. T. Foote and for four years was thus engaged, acquitting himself so satisfactorily in that position that in 1914 he was elected county attorney and is now serving in

that important office, his administration of the affairs of which is giving general satisfaction to the public.

Mr. Ramsey is an active, energetic young lawyer, public spirited and enterprising and is very popular in his large circle of friends throughout the county generally. He is a member of the Presbyterian church and takes a warm interest in all good works hereabout.

Source: History of Reno County Kansas by Sheridan Plouge, 1917

| | | |
|-----|-------------------|------|
| 194 | Ramsey, Nellie D. | W. |
| | Herbert | Son |
| 195 | Beard, Nettie H. | Head |
| | Harold | Son |
| 196 | Comer, O. I. | Head |

| | | | |
|-----|-----------------|------|----|
| 197 | Ramsey, Herbert | Head | 10 |
| | Florence | Wife | |
| 198 | Howard, Jess | Head | 10 |
| | Dennis | Wife | |

| | | | |
|--------------------|------|---|-------|
| Ramsey, Herbert E. | Head | 0 | 10000 |
| - Florence | wife | | |
| - Herbert E. | son | | |
| Pierce, Frank L. | Head | R | 60 |
| - Valoise E. | wife | | |
| - Frank L. | son | | |
| Leach, William | Head | | |
| Beard, Charles D. | Head | 0 | 5000 |

1910, 1920 & 1930 Reno County, KS Federal Census

Herbert died 4/3/1953 and was buried at Memorial Park Cemetery.

Florence died 4/12/1965 and was buried at Memorial Park Cemetery

OUR VETERANS

We remember our veterans. Thank you to our RCGS members that submitted information on their *direct* ancestors.

Edwin Andrew Hair

Father

Private - 1st Company 164 D. B. Bn. Served in Co. F. 305 Infantry 77th Division

World War I. Served in France: Oise - Aisne Offensive 8/18 to 9/16/1918. Mense Argonne 9/26 to 11/11/1918. Baccarst Sec. 7/10 to 8/1/19. Ossle Aug 16-18/ 1918. Entitled to wear two gold service acorns.

He went from Ness City, Ness, Kansas to Camp Funston, Kansas February 26, 1918.

Submitted by: Ruth Hair Filbert

James Dawson, Hampshire Co., VA

Paternal GGG Grandfather - Revolutionary War

Fought Indians in battle at the town of Coshocton on the Muskingum River in Ohio. Fought the Indians at the mouth of the White Woman's Creek and on Big Beaver. He was in the 13th Virginia Regiment under Uriah Springer for three years and seven months. Discharged at Fort McIntosh. He fought many other skirmishes. Pension number S44116

Abijah Dawson, Hampshire Co., VA

Paternal GG Grandfather - War of 1812

Capt Kendall's troop of Horses, Ohio Military

Jasper Newton Hicks, private

Maternal Great Grandfather - Civil War

Company D, 17th Pennsylvania Cav

John Henry Dawson

Father - WW I

Private First Class Quartermaster Corps

Ft. Leavenworth, Kansas

Submitted by: Esther L.(Dawson) Goheen

Martin P. Stoecklein

Father

U.S. Army

Pvt or PFC

World War I: Germany & France

Submitted by: Jim Stoecklein

Alfred C. Ellis - father

U. S, Army - Pvt.

WW1

Hugh Wade, Sr. - gg gpa

War of 1812-14

Richard Wade, Sr. - ggg gpa

Tenth Battalion of Lancaster Co. Pa. Militia

Soldier, 2nd class in Revolutionary War

George Stroh, Sr. - gggg gpa

Tenth Battalion of Lancaster Co. Pa. Militia

Soldier, 2nd class in Revolutionary War

Rev. David Loofbourrow, Sr. - gggg gpa

Pvt. in Colonial Army

Revolutionary War

William Rittenhouse - ggggg gpa

William was a Fifer in the Revolutionary War

Submitted by: Hazel J. (Ellis) Ashens

Cleveland H. Snell - Grandfather

World War II

U. S. Army, PFC

Daniel Union Stafford - Grandfather

World War II

U. S. Army

Submitted by: Gale Stafford-Wall

VETERANS OF RENO COUNTY

Reno County Men Who Died in World War I

| | | | |
|-----------------------|------------------------|------------------------|-------------------------|
| Anderson, Edwin | Griebel, William | Newcomb, John G. | Weaver, Henry John |
| Balding, John W. | Grow, Leslie Enoc | Newton, Roy H. | Weaver, William T. |
| Ball, Earl Lloyd | Hansleman, David | Norris, Fred | Webster, Clayton |
| Bennett, William Earl | Harris, Charles | Oberg, Albert W. | Wheeler, Mont |
| Binker, Roger M. | Haston, Samuel C. | Parks, John Samuel | White, John Bernard |
| Blevins, Earl F. | Hipple, Eugene | Pickering, Henry W. | Williams, Earl |
| Brownlee, Paul | Hodgson, Carroll D. | Platner, Aaron A. | Williams, Earl R. |
| Casner, Earl P. | Holmes, William G. | Pool, Gilbert | Wood, Howard |
| Clark, Burnside | Howard, Lerlowe E. | Prior, Bert | Wright, G. I. |
| Cook, Claude | Hutscher, Bert | Raymond, Jesse Carl | Young, Harry L. |
| Craig, Oscar E. | Johnston, Carl | Rice, Otis W. | |
| Crisswell, Paul V. | Jones, William N. | Rishel, Lysle J. | Extracted from The Hut- |
| Crow, Harvey Isaac | Jones, Walter | Russell, Lloyd B. | chinson News 11/11/1969 |
| Davis, Aaron Ray | Kinchelo, Don A. | Sandhagen, George | |
| Dealy, Berard | Kingsbury, Larue S. | Saunders, George | |
| Dralle, Albert E. | Lake, Benjamin H. | Schrader, Henry | |
| Dunlap, Ernest | Lennon, Scott | Scott, Ernest | |
| Dunn, Amos Earl | Levens, Laurence | Selfridge, Benjamin H. | |
| Edwards, Hobart D. | Libbey, Frank | Sheehan, Daniel | |
| Elliott, Iliff L. | Lupton, Ellis A. | Shuart, B. L. | |
| Fenton, Neil D. | Lynn, Alvah S. | Sickels, Grover C. | |
| Ferguson, John J. | McClure, Edward Aretus | Smiley, Charles | |
| Fiori, Seraphin | McDonald, Charles A. | Smith, Otto | |
| Foster, Lester O. | McKenzie, Morrell | Sommerhause, Edward F. | |
| Fox, Chester | McGahan, Leslie L. | Straight, Floyd L. | |
| Garrison, Harland I. | McKee, Arden H. | Taylor, Howard E | |
| Gibbs, Jesse | McKee, Edward W. | Thiessen, John | |
| Gibbs, James | McLane, Willard Gray | Ungles, Benjamin H. | |
| Goodwin, James | Mairs, Ned J. | VanCampen, Howard | |
| Goetze, Arthur C. | Martin, Van M. | Vermillion, Ed | |
| | Mastellar, William G. | Walker, Glenn E. | |
| | Maynard, James E. | Warren, Laurence Ray | |

PHOTOS & POSTCARDS

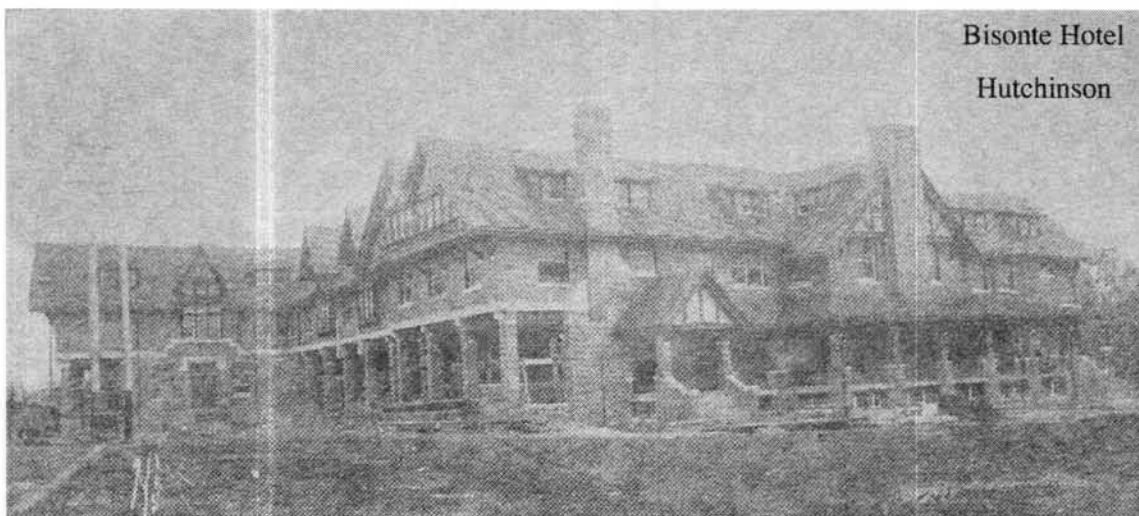


1901 Dawson Family Photo - Submitted by Cordelia Brown

Back row, left to right: Will Brown, Benoni Dawson, Fanny Dawson, Gilbert Marteney, LaMeta Dix, James Warren Dawson, Catherine Dawson.

Front row left to right: Rachel Dawson with Gilbert Marteney Jr., Lillie K Graves with Mildred Dawson, Minerva Parkins with Grace Dawson, Ethel Brown, Robert Harrison Dawson, Glenn Brown, Susan Dawson.

The Dawsons and Browns farmed in Reno County. The girl just to the right of the fold...in the first row (or fourth from the right, first row) is Ethel Louise Brown. Aunt Ethel was born in Castleton, Reno, Kansas on 8 Mar 1893. Her brother Glenn Dawson Brown (19 Feb 1895 - 30 Jun 1990) also flanks their grandfather, Robert Harrison Dawson, who was born in Fairview, West Virginia in 1838.



CREATIVE IDEAS TO DISPLAY & SHARE YOUR FAMILY HISTORY

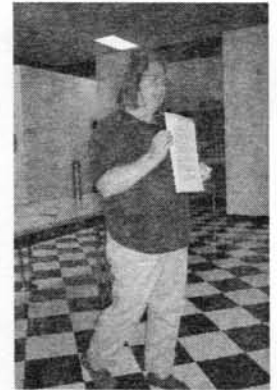
| <u>Category</u> | <u>Display Idea</u> |
|--------------------|---|
| Album/scrapbook | Heritage <u>Photo</u> Album [direct ancestors only] One place for those special pictures collected |
| Album/scrapbook | Heritage <u>Scrapbook</u> [Focus on one family / surname] |
| Album/scrapbook | Photo Album - " Theme " [weddings, siblings, "growing up" photos of one child, etc] |
| Album/scrapbook | Photos of family heirlooms - good idea for items that are divided among or belong to other family |
| Books/Binder | Direct Ancestor Binder - info and documents [divided maternal / paternal] |
| Books/Binder | Family Cookbooks...collect and put together family recipes |
| Books | Printed Family Histories - contribute for one or publish your own [family branch or surname] |
| Books | Blank Family History Books - fill in the blanks / give as gifts |
| Boxed | A pretty box for Baby things or special items |
| Boxed | Letters and cards you've kept from loved ones - pretty box for display or storing |
| Boxed/Framed | Hankie collection - in pretty box or framed with picture of the family member that owned them |
| Boxed/Framed | Jewelry - framed or boxed |
| Display Case/Frame | Small Family Items / keepsakes - could do themes / Many styles to choose from |
| Framed | Flags / Other military memorabilia - don't forget frame easels |
| Framed | Baby pictures of family unit [theme] |
| Framed | Collection of one person or couple [parent / grandparents] |
| Framed | Large collection of direct ancestor photos |
| Framed | Children's art |
| Framed | Article of historical account / Documents [i.e. baptism, marriage] |
| Framed | Landscape, property and homes of ancestors |
| Framed | Postcards from/belonging to ancestors |
| Framed | Recipes/cards/love letters |
| Dishes | Plate - on stand or hanger / Specific area in home to rotate and display family dishes, etc. |
| Jar | Buttons in a jar - belonging to family member |
| Jar | Jar of soil - from ancestors homestead |
| Other | Paper weight photo holder /photo coasters |
| Other | <u>Software</u> [Print Shop / Microsoft Plus Digital Media Edition / Power Point & many more] Templates for printing projects / Photo slide shows on CD/DVD [photo & printer software] Chart: free online - http://genealogy.about.com/library/free_charts/bl_family_tree.htm |
| Other | <u>Specialty Paper Projects</u> Military ancestors - on specialty papers [scroll] / Use for invitations, Surname lists, FGS, etc. |
| Other | Curio or other cabinet / display area - place to rotate collection of family items you have |
| Other | Information Cards - to describe/display with an item |

Think of a new way to display something that is special to YOU!

These are some of the examples from the September program

OCTOBER POTLUCK & FAVORITE ANCESTOR STORY

Another fun potluck meeting with great food & fellowship. Show & Tell items were shared by Denton Warn, Margaret Childs, Sally Eubanks, Karen Burgess & Gale Wall. Our favorite ancestor story contest winners were announced [see below] and our 2007 volunteers recognized [see page 107].



Favorite Ancestor Story

Congratulations to the winners of the 2007 Favorite Ancestor Story contest and thank you to our participants!

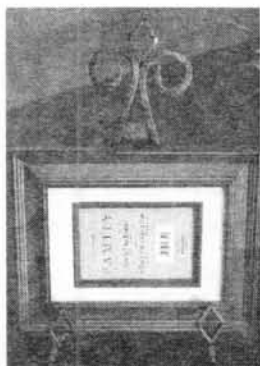
1st Place: "Louisa Stevens Baldwin" - submitted by Margaret Childs

2nd Place: "The Night The Stars Fell" - submitted by Martha Jo Longhofer

3rd Place: "Call for Phillip Morris! Call for Phillip Morris" - submitted by Karen Burgess

Thank you to Kathleen Dankanyin and Marilyn Johnston for your submissions.

Special thanks to our judge at the Hutchinson Public Library



1st Place: Large Easel & Frame



2nd Place: Small Easel & Frame



3rd Place: Photo Album

KANSAS STATE FAIR - 2007

Our second year giving genealogy workshops at the Kansas State Fair was a success. We had over 125 people attend. States represented by our attendees were Kansas, Virginia, Texas, Colorado, Connecticut, Oregon and Nebraska. Not everyone signed in but we know the turnout was good!



Winners of the Genealogy competition for 2007:

885 Genealogy; unpublished - Kathy Ritterhouse

886 Genealogy; published (bound book) - No entries

887 Genealogy; farthest back in time - 1st Place: Keith Burgess [RCGS Member]

2nd Place: Mike Hornbaker

888 Computer Generated Narrative - 1st Place: Keith Burgess

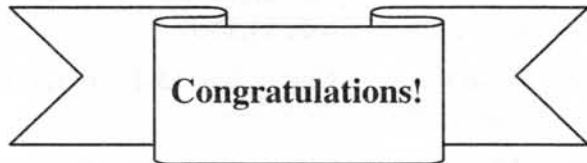
2nd Place: Barbara Wilson

3rd Place: Barbara Pendleton

889 Junior Division - 1st Place: Katy Hendricks

2nd Place: Catherine Pendleton

890 Best Documented - All entries - Keith Burgess



LAND RECORDS

Sales Reported of Reno County Farms

One South Hays Place sold for \$20,800 - Other farm deals

A number of large farm deals have lately occurred in Reno county aggregating in consideration close to \$94,000.

One of the biggest was the sale of a half section of land in South Hayes township by J. N. Hinshaw, of Sylvia, to George B. Kessling, consideration \$20,800. The land is a mile west of Huntsville.

Other deals in farm dirt, reported by the real estate men are as follows:

John Bontrager bought the farm of Enos Yoder, in Haven township, three miles southeast of Yoder, paying \$7,000.

Mrs. Mary Rexroad bought the Young farm, a quarter section located in Lincoln township, two miles southwest of Darlow, paying \$11,000.

C. L. Williams bought the farm of J. B. Anderson, in Ninnescah township, paying \$8,500.

The sale of the Cornelius farm in Grant township to L. Ardery, previously reported, is also recorded this week. The consideration was \$16,000.

B. F. Linder bought the farm of W. P. Kreie, in Sylvia township, consideration \$2,500.

Joel Raines bought the farm of George M. Egy, 120 acres, in Langdon township, paying \$4,800.

H. F. Futzmeyer bought the Rankin farm in Westminster township, a quarter section.

Bailey Cole bought a quarter section farm in Loda township, for \$4,000.

Mrs. Rosa Latham purchased a 100 acre tract of land in Miami township, paying \$3,000.

L. J. Lanham bought the quarter section of Oliver Dickhut in Miami township, consideration \$4,000.

Hutchinson News Weekly 10/19/1911, P 7

Real Estate Transfers

John A. Collingwood to Frank C Field, tract in southwest quarter, section 18, township 26, range 6, \$125

J. A. Whitehurst to A. J. VanSickle, tract in Sylvia, \$1

T. R. Colville to John Hannon, part lot 3, block 8, G. C. Millar's south addition, \$350

W. R. Crow to John Hannon, lots 1-2, block 9, Sunnower Town company's third addition, Hutchinson, \$1

G. M. Duckworth, sheriff, to G. H. Welch, west half of southwest quarter, section 24, township 24, range 4, \$4,650

J. N. Bailey to Lucy L. DeVoss, lots 41-42, block 2, Bunker's addition, Hutchinson, \$2,000

L. A. Beebe to J. A. Williamson, lots 11-12, block 1, Ridgeway's first addition, \$100

L. A. Bunker to P. A. Rarrick, lot 44, Bigger Street west, Constant's addition, Hutchinson, \$20

P. A. Martens to Jacob E. Schmidt, tract in section 16, township 22, range 4, \$1,675

F. C. Unruh to Henry D. Krehbiel, s. e. qr. n.w. or. and s. w. at. n. e. at. 27-26-5, \$4,150

J. G. Nelson to John Carter, lots 13-18, block 32, North Turon, \$75

Frank Mayo to Charles A. Jones, lots 106, 168, block 9, Puterbaughs addition to S. Hutchinson, \$600

Claud H. James to G. V. Bruce, lots 88, 89, Crestview addition, \$600

Henry Astle to A. J. Tyler, lots 20-22, block 5, Henry Astle's first addition, Haven, \$225

F. E. Porter to Frank Lafayette, lots 15-18, block 32, North Turon, \$1,200

M. R. McMurry to E. H. Cogswell, lot 23 and east 8 1/2 feet lot 22, block 3 and lot 26 and west 16 1/2 feet lot 25, block 2, Lee's first addition, Hutchinson, \$2,500

United States to Dare G. Shaffer, N. hf. N. E. or. And S. E. qr. N. E. qr. 8-22-7, Patent

Hutchinson News Weekly, 9/30/1909

IN THE NEWS

Salem Church Dedicated

There was a very large attendance at the dedication of the new Dunkard church in Salt Creek tp. last Sunday, among those present was quite a number from Nickerson. The services were conducted by Rev. Trostle, assisted by Rev. Umbarger both of Abilene. The church which is a plain substantial frame structure, is 35 x 50 and is furnished for use rather than for ornament and will comfortably seat between 200 and 300 people. A kitchen is petitioned off one end for culinary purposes during their feasts and upon other occasions.

At the close of the service an opportunity was given all who wished to donate something for the benefit of the church and over \$40 were donated. After the meeting an invitation was given all who lived at a distance to either go home with some one living near by, or to remain at the church for dinner, a quantity of eatables having been left over from the feast of the previous evening. No one was allowed to go away hungry. This society has no particular dedication service. There was preaching again at 3 p.m. This church has a large membership and no have ample accommodations. The church is a credit to Salt Creek tp.

The Argosy [Nickerson] Wed., 5/20/1885



Salem Community Church - 2007

Stolen Mare Is Found

Valuable Animal Stolen Two Years Ago is Located in Oklahoma

W. J. Morgan, living northwest of Hutchinson, left for Oklahoma City at noon today to bring back a fine driving mare which was stolen from him over two years ago.

Fair week, 1909, Mr. Morgan tied his mare, hitched to a buggy, to a post north of the Hitchcock dry goods store on First east. When he returned for her all that he found was the halter with which she was tied.

John Dealy lost a horse at about the same time and when the police received word from the sheriff at Oklahoma City that a horse stolen from Reno County had been found, Mr. Dealy went to Oklahoma after it, naturally thinking that it was his. It turned out that the horse was the one stolen from Mr. Morgan and he has gone to claim his property. Mr. Dealy returned from Oklahoma today and reports that the man who stole the Morgan mare had entered her in several running races and had won some good stakes with her.

Hutchinson News Weekly, Thurs. 10/19/1911, Page 7

BIOGRAPHIES & FAMILY RECORDS**Ora May - Who?**

By: Claudia Laird Glass

When I first began working on my husband's family tree sometime in 2001 (after our marriage in late 2000), one of the first things I did was to try and locate all the graves in Reno County, Kansas that marked members of his family. Principally, in the beginning, all I was trying to find were those directly related to the GLASS family and the GRAVES family. Later, I moved on to other branches of the family.

In Eastside Cemetery, I found a marker for someone named Ora GLASS. It was in amongst the markers for the family of John Wesley GLASS lined up right alongside some of his children. I diligently photographed all the stones and then made a surprising discovery. After a quick bit of research, it was determined that Ora M. GLASS was not one of the children of John Wesley GLASS and his wife - so the question was, who was she?

The interment records at the cemetery didn't help much... the burial card indicated she died of pneumonia and the name of the parent/s were listed as "Charlotte Martin". There was no one named "Charlotte Martin" in the 1900 census. I had other things to keep me occupied, so this question was put aside until a later date.

For several years, Ora languished in my book as a daughter of "Charlotte Martin", and she was set up in my file with a maiden name of Martin. Nothing else was done to research her because other matters kept my attention diverted elsewhere. But I kept thinking about her.

One day last year (in 2006), when my husband and son were in the library downtown in Hutchinson, I became tired of waiting around for one to find the book he was looking for while the other visited with friends. I slipped upstairs and went to peruse the obit files to see what was there. To my surprise, there was an obituary card for Ora M. GLASS in the old Reno County obit file with a reference to the newspaper it appeared in. I went to the microfilm area and set about looking up the film, and in about 5 minutes I found the death notice for her.

The newsprint was in fairly bad condition when it had been microfilmed. There were signs of ink bleed-through from the opposite side of the newsprint, so the obituary was a little hard to read. However, with some time and a good magnifier, I was able to decipher the details related in the article well enough to find her in the county death record book and discover her full name.

The girl's name at the time of her passing was Ora May GLASS. She was the daughter of Charlotte "Lottie" (nee CHITTENDEN) and Martin ALLEN. The Allen family were residents in Hutchinson at the time of the census in 1900, so they were relatively easy to find. They were also members of the Hadley (Avenue F East) Methodist Episcopal Church. Ora May ALLEN apparently married Charles Orlando GLASS during 1901 sometime, but the marriage record is not found in Reno County's marriage books. She died about a month before her eighteenth birthday.

I went to the Internet to see if anyone related to the Charlotte and Martin ALLEN family were working on finding ancestors and descendants, and found a woman living in California who was a descendant of Ora May's sister Frances. She was elated to hear from me, saying that the family never knew what happened to Ora May. She had just disappeared. It seems the family moved away from Reno County about the time Ora married, and when she died, nobody in her family was ever notified. Martin and Charlotte separated and later divorced due to marital problems, so they had their own issues to deal with, and we believe that Ora's husband was so distraught that it never occurred to him to send word to them. Perhaps he lost their address.

BIOGRAPHIES & FAMILY RECORDS

Because of the circumstances surrounding Ora May's situation, I made a little extra effort and called the funeral home that was operating in Hutchinson at the time and was still in existence - Johnson & Sons, now under new ownership. They had a funeral record for her, but it was misfiled under the name "Glars". I suppose that wasn't quite as bad an error as when I had her maiden name misstated in my own records as "Martin". They offered me a copy of the funeral record, and I immediately transmitted copies of the interment card, the funeral record, and a copy of the headstone photo to the descendants of Ora May's surviving family descendants.

I think of Ora May (ALLEN) GLASS as a member of the family, a lost child of the ALLEN family, that we adopted for our own and cared for in the absence of her parents after their move to other regions. The Eastside Cemetery is a well kept location, and the stone marking her final resting place matches those of the family members who chose to keep her close and look after her in death the way she would have been loved and cherished in life.

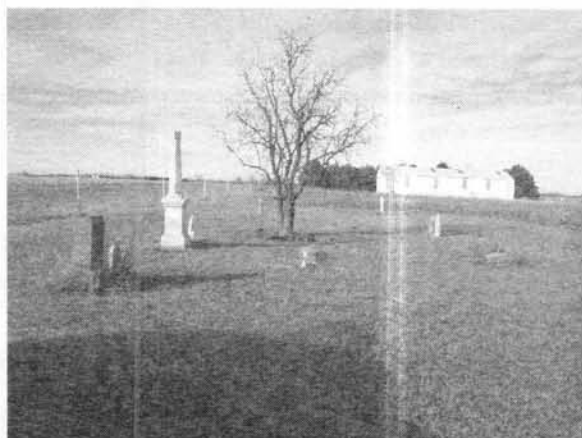
Names Mentioned

ALLEN, CHITTENDEN, GLASS, GRAVES



CEMETERY CORNER

Can A Cemetery Really Be Unnamed?



I suppose the answer to that question could be yes and no, depending on the person you ask. I would answer No. It had to be called something besides "the cemetery", right? Such is the case of a small cemetery in Sumner Township that our publication calls 26-2.

A small cemetery is located in the SW Corner of NW¼ Sec. 14-26-4. One can find it on the east side of the road, two and a half miles north of St. Joe in Sumner Township. This unused, unkept cemetery with four marked graves is overgrown with grass taller than some of the grave markers. No one in this area seems to know the name of the cemetery nor how long it has been there.

One resident told of a farmer who attempted to stack on the plot but the neighbors objected. As a result, the hay was removed and the fence replaced.

My first visit to this cemetery was in early 2006. What I found was a small well kept cemetery that included a flag pole. On that flag pole is a compartment with a book for visitors to sign. The book was placed in the cemetery May 1980 by Keith Neuway. He has been a caretaker of this site for a long time. He told me of how he hauled off many loads of trash that had been dumped there in his effort to clean up the burial site.

Mr. Neuway was able to locate deed 509 filed on February 18, 1885 in book 14 at the Reno County courthouse. Henry and Jane Nichols gave one acre [10 2/3 rods x 15 rods] to be used as a public burying ground. The county assessor's office lists it as the Wiese Cemetery. A man by the name of Wiese did own the land at one time but it was after the burials had taken place. Obituaries for a few of the people known to be buried there refer to it as the Antioch Cemetery in Woodbury. The Hutchinson Herald dated December 22, 1887 has an article on the front page about the Woodbury post office closing, so we know the area was once called Woodbury.

Instead of referring to the cemetery as 26-2 I have called it the Sumner Township Cemetery based on its location. I think we should perhaps officially refer to it as the Antioch Cemetery as it was called when families buried their loved ones here. As we continue to update our cemetery records of Reno County we will also record the A. K. A. [also known as] names, as many of them were often called something other than what we know the name to be.

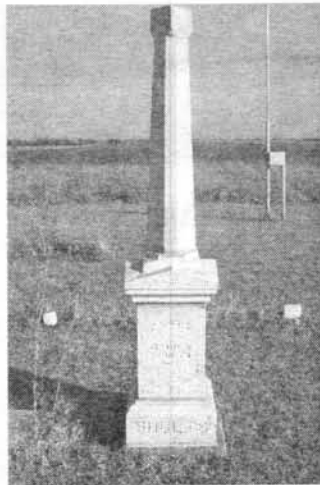


CEMETERY CORNER

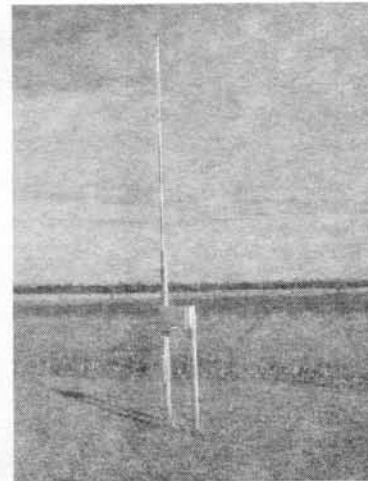
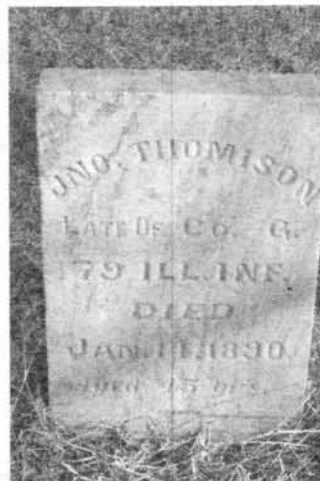
Interments with headstones in 2006

| | |
|--------------------------|---|
| Alexander, Earnest | d. 1/5/1882 |
| Betz, John A. | 4/30/1830 - 2/11/1890 |
| Gilchrist, Samuel | d. 10/4/1885 |
| Goddard, Samuel G. | d. 12/23/1887 |
| Jones, Lewis | 7/3/1838 - 6/19/1885 |
| Schults, Marion Elsworth | d. 6/17/1874 |
| Shults, Genetta | d. 3/24/1883 |
| Thomison, John | d. 1/14/1890 Late of Co. G 79 IL Infantry |

The Interior Herald 7/4/1885 Page 1: "Lewis Jones died at his home at Woodbury last Friday and was buried at the Antioch Cemetery on Saturday. He was an old soldier and contracted the disease of which he died in the army. He leaves a wife and eight children in rather poor circumstances..." [partial obituary]



Cemetery Register
 History - In the East
 Please sign, date, and leave your address and Telephone #.
 Thank You,
 Keith Newmyer
 24209 Antioch Rd.
 Mt. Hope, Ky.
 Tel. # 516 448-2485



SCHOOL DAYS

What school is this?

Postcard is dated 1908

Public School, Hutchinson, Kan.



POST CARD.
THIS SPACE FOR MESSAGE.

Sept. 16/08.

*Dear Bro: I think this is a nice building, don't you?
How are you now, are you getting strong again. What do you think I rec'd a letter postal from Brad Haven ^{from Red Bank} he said Mabel Collins is married ^{to} your agent wait you surprised at first I did not get to Wichita H. Co. was out he has been out a week & a half just rec'd a postal from other than him. there is an Opera Friday night the "Country Girl" with Love
The answer Music ^{from} ^{Co.} ^{is} ^{mine's}*



*Mr R. J. Cragan.
Argonia Kansas.
R.R. # 3. Box 18.*

September 20th

VOLUNTEERS

The RCGS Board would like to thank all of our volunteers of 2007 that:

- Helped with our monthly programs and meetings, whether presenting or helping set-up/clean-up
- Contributed data or helped type data for our new website or The Sunflower
- Helped with Special events [like the KS State Fair & Potluck]
- All that serve on the board, committees & special projects

Volunteers recognized at the 2007 potluck.

Local & out of town / state members that helped with the cemetery book typing project:

Sally Eubanks of Hutchinson, KS; Darren McMannis of Newton, KS; Debby Brown of Parkville, MO & Melody Morgan of Plano, TX [Sally, Debby & Melody became members after volunteering for the project].

Non-members that helped with the cemetery book typing project:

Freda Lea of Phoenix, AZ; Robert Richardson of Topeka, KS & Annetta Hoffman of Denver, CO.

They **ALL** answered a request for volunteers posted on the Reno County message board.

Two volunteers received special recognition this year:

Melody Morgan – RCGS member of Plano, TX.

Melody has contributed to our society this year by:

- Working on the cemetery book typing project - typing 231 of the 400 pages
- Indexed the surnames in The Sunflower for 1979 – 2007 [will be posted on our website]
- Currently scanning The Sunflower 1979 – 2006 for CD publication

Kathleen Dankanyin – RCGS member of Hutchinson, KS.

Kathleen has contributed to our society this year by:

- Typed the 12,500+ interments and contributed for the Eastside Cemetery special project on our website
- Working on the cemetery updating project
- Indexing the obituary file and old newspaper index card file for our website
- Volunteered to be our Obituary Coordinator and keep the card files current and indexed

Melody & Kathleen are being presented with a certificate of appreciation for their contributions to our society. Thank you for working so hard to serve others.

Thank you to member Darren McMannis for contributing the old yearbooks that will be indexed for the website and used in The Sunflower.

We'd also like to say a big thank you to the members that participate in the activities of our society.

Kathleen Dankanyin (L) receiving her certificate from Karen Burgess, VP.



OBITUARIES

Submitted by Kathleen Dankanyin - RCGS Obit Coordinator

Death of Another Reno County Pioneer Woman

Mrs. Annie Whinery, Who Died Today, Settled on Her Farm in 1878

Mrs. Anna Whinery, a pioneer resident of Reno County, the widow of Z. W. Whinery, died at her home three and a half miles west of Hutchinson this morning at 3 o'clock. A complication of diseases caused her death. She had been in poor health for nearly two years, and had been severely ill for two weeks before her death.

Annie Brann was born at Gurneyville, Clinton County, Ohio January 16, 1844. She was married May 21, 1863 to Z. W. Whinery. They moved to Kansas in 1878, settling on their farm where Mrs. Whinery died this morning. Mrs. Whinery is survived by the following children; L. V. Whinery who lives on a farm adjoining his mother's land; Mrs. J. P. Johnston, of Cleveland, Ohio; Clifton Whinery, and Miss Clara Whinery, who lives at home. Her husband Z. W. Whinery died nine years ago. A brother, Thomas Brann of Gurneyville, Ohio is here, and a sister, Mrs. O. M. Millan of Alamosa, Colorado will be here for the funeral. The funeral will be held tomorrow afternoon at 2 o'clock from the Poplar Church. The funeral services will be conducted by Rev. Coldsmith, assisted by Rev. W. B. Stevens.

Hutchinson News - Monday May 31, 1915

Death of Mrs. Sawyer

Mrs. Elizabeth Sawyer, residing near Haven, died Saturday night after a brief but painful illness. The remains were interred in the city cemetery at 2 o'clock Tuesday afternoon. Mrs. Sawyer has many friends in this city who will be pained to learn of her death.

Hutchinson News Weekly 1/23/1890

Mrs. Hannah Tracy, living near Haven, died Saturday night and will be buried in Hutchinson city cemetery Tuesday, The deceased had been a resident of Reno County for a number of years and possessed a large circle of friends and acquaintances who will deeply mourn her sudden taking away.

Hutchinson News Weekly 1/23/1890

Sutherland Worthington

Sutherland Worthington was born in Mercer Co. Pennsylvania, November 6, 1837. He died January 9, at the age of 82 years. He was one of the oldest settlers of Kansas, coming here in 1876 and for a time made his home with his niece, Mrs. Minnie Hale of this city. For the past eight years he was an inmate of the county farm. He is survived by a brother and sister who live in Oklahoma and one brother of this city, Elias, who lives on Carpenter Street.

Funeral services were conducted from the Johnson funeral parlors and the body was laid to rest in the Laurel Cemetery. Rev. A. C. Tunnell of the Nazarene officiated at the services.

Hutchinson News 1/13/1920

LINKS & MORE

Check out these links!

- Source documentation cheat sheet: <http://www.familytreemagazine.com/articles/nov07/sources.pdf>
- Online archive of scanned records & images: <http://www.distantcousin.com/>

**Time to renew
your membership!**



THE SECRET DOOR

Congratulations!

Debby Brown of Parkville, MO

Winner for August 2007

See the instructions on the RCGS website.

Tips-

- It will not be found in a PDF file
- It could be behind a picture
- It could be behind a word
- It looks like the picture below

We hope you enjoy this activity.

Good Luck!



PUBLICATIONS ORDER FORM

| | |
|---|---------|
| 1880 Census of Reno County | \$18.00 |
| Births - Recorded Early Births of Reno Co. 1890-1911 & Index | \$17.00 |
| Cemetery Book of Reno County, 1865-1978 SOLD OUT | \$23.00 |
| Cemetery Records of North Inman, Superior Township, McPherson County, KS | \$7.00 |
| Deaths - Recorded Deaths of Reno County 4 volumes, 1890-1911 & Index | \$17.00 |
| Homestead Records of Reno County Name, location & file date 1875-1945 | \$21.50 |
| Marriages - Marriages of Reno County 1872 - 1913 | \$23.00 |
| Naturalization Records of Reno County Index 1875-1955 filed at courthouse | \$12.50 |
| Teachers of Reno County / 1884-1966 New PRICE | \$21.00 |
| <i>The Sunflower</i> Back Issues - Per year only | \$ 5.00 |
| Harper's Weekly 1888 - The City of Hutchinson - featured supplement - PDF on CD | \$5.00 |
| Plat Book of Reno Co. 1902 - PDF on CD | \$10.00 |
| Postage & Handling included in price Kansas residents add 7.05% sales tax Member discount—\$1 each item | |

To order a publication - clip and return to:

RCGS - P. O. Box 5
Hutchinson, KS 67504-0005

Name: _____

Address: _____

City: _____

State: _____ Zip: _____

Email: _____

Circle or highlight the items you are ordering

Total amount enclosed: \$ _____

Make checks payable to Reno Co. Gen. Soc.



RCGS MEMBERSHIP—\$12.00***** Time To Renew Your Membership! *****

Please renew by 12/31 and help us keep administrative costs down.

Member Benefits

- Four [4] issues of our quarterly "*The Sunflower*"- Published in Feb., May, Aug., & Nov.
- Free Queries in The Sunflower [limit 50 words]
- Monthly E-News – communicating meeting review & reminders, time sensitive data and other informative news.
- 11 monthly programs - both educational and fun
- 1 free hour of research
- Vote in election of Officers [November]
- Surnames for Reno County ancestors posted on RCGS website
- Surname research profile [outside of Reno County] posted on RCGS website
- Discount on publications [\$1.00 per publication]
- List and link on RCGS website to member website [genealogy related]

Member # _____

Name: _____

Address: _____

City: _____

State: _____ Zip: _____

Email: _____

Send Gift Membership to: [recipients information]

Name: _____

Address: _____

City: _____

State: _____ Zip: _____

Email: _____

Thank you for supporting RCGS!

RESEARCH CENTERS**Hutchinson Public Library**

901 N. Main
Hutchinson, KS 67501
620-663-5441
Mon - Fri 9:00 am to 9:00 pm
Sat 9:00 am to 6:00 pm
Sun 1:00 pm to 5:00 pm
www.hutchpl.org

Hutchinson Family History Center

518 E 43rd Street
Hutchinson, KS 67502
620-665-1187
Tues 1:00 pm to 8:30 pm
Wed 9:30 am to 5:00 pm
Thur 9:30 am to 5:00 pm

Kansas State Historical Society

6425 SW 6th Street
Topeka, KS 66615-1099
785-272-8681
www.kshs.org

Reno Co. Historical Society & Reno Co. Museum

100 S. Walnut
Hutchinson, KS 67501
620-662-1184
Tues to Sat 9:00 am to 5:00 pm
Sun 1:00 pm to 5:00 pm
www.renocomuseum.org/about.html



SURNAME INDEX

| | | | |
|--------------------------------------|-------------------------|-------------------|--------------------------|
| Adkins: 92 | Ellis: 94 | Lake: 90 | Schults: 105 |
| Alexander: 105 | Eubanks: 86, 98, 107 | Lanham: 100 | Shaffer: 100 |
| Allen: 102, 103 | Field: 100 | Latham: 100 | Shults: 105 |
| Anderson: 100 | Filbert: 86, 88, 89, 94 | Lea: 107 | Snell: 94 |
| Ardery: 100 | Foote: 93 | Linder: 100 | Stafford: 86, 94 |
| Ashens: 94 | Fountain: 92 | Lingg: 86, 88 | Stansel: 88 |
| Astle: 100 | Futzmeyer: 100 | Longhofer: 98 | Stevens: 98, 108 |
| Bailey: 100 | Gilchrist: 105 | Loofbourrow: 94 | Stoecklein: 86, 88, 94 |
| Baldwin: 98 | Glars: 103 | Martenev: 96 | Stroh: 94 |
| Beebe: 100 | Glass: 102, 103 | Martens: 100 | Thomison: 105 |
| Belfour: 93 | Gobin: 88 | Martin: 102, 103 | Tracy: 108 |
| Betz: 105 | Goddard: 105 | Maxwell: 92 | Trostle: 101 |
| Bontrager: 100 | Goheen: 94 | Mayo: 100 | Tunnell: 108 |
| Brann: 108 | Gragan: 106 | McMannis: 89, 107 | Tyler: 100 |
| Brown: 90, 96, 107, 109 | Graves: 96, 102, 103 | McMurry: 100 | Umbarger: 101 |
| Bruce: 100 | Hair: 94 | Millan: 108 | Unruh: 100 |
| Bunker: 100 | Hale: 108 | Millar: 100 | VanSickle: 100 |
| Burgess: 86, 88, 89, 91, 98, 99, 107 | Hannon: 100 | Morgan: 101, 107 | Wade: 94 |
| Carter: 100 | Hedrick: 92 | Mosier: 90 | Wall: 86, 88, 90, 94, 98 |
| Chew: 90 | Heller: 86 | Murphy: 90 | Warn: 90, 98 |
| Childs: 88, 98 | Hendricks: 99 | Nelson: 100 | Wedman: 86, 88 |
| Chittenden: 102, 103 | Hermstein: 88, 89 | Neuway: 104, 105 | Welch: 100 |
| Cogswell: 100 | Hettinger: 93 | Nichols: 104 | Whinnery: 108 |
| Coldsmith: 108 | Hicks: 94 | Ontjes: 90 | Whitehurst: 100 |
| Cole: 88, 100 | Hinshaw: 100 | Parkins: 96 | Wiese: 104 |
| Collingwood: 100 | Hoffman: 107 | Pendleton: 99 | Williams: 100 |
| Colville: 100 | Hornbaker: 99 | Porter: 100 | Williamson: 100 |
| Cornelius: 100 | James: 100 | Raines: 100 | Wilson: 99 |
| Crow: 100 | Johnson: 103, 108 | Ramsey: 93 | Wolf: 92 |
| Dankanyin: 86, 98, 107, 108 | Johnston: 98, 108 | Rankin: 100 | Worthington: 108 |
| Dawson: 94, 96 | Jones: 100, 105 | Rarrick: 100 | Yoder: 100 |
| Dealy: 101 | Kendall: 94 | Rexroad: 100 | Young: 100 |
| DeVoss: 100 | Kessling: 100 | Richardson: 107 | ***** |
| Dickhut: 100 | Krehbiel: 100 | Rittenhouse: 94 | Not Indexed |
| Dix: 96 | Kreie: 100 | Ritterhouse: 99 | • Table of contents |
| Duckworth: 100 | Lafayette: 100 | Sawyer: 108 | • Veterans, Pg 95 |
| Egy: 100 | Laird: 102 | Schmidt: 100 | |

Moving? Please notify us of your new mailing address. THE SUNFLOWER is not forwarded.

PUBLICATIONS

| | |
|--|-----------------|
| 1880 Census of Reno County | \$18.00 |
| Births - Recorded Early Births of Reno County 1890-1911 & Index | \$17.00 |
| Cemetery Book of Reno County, / 1865-1978 | SOLD OUT |
| Cemetery Records of North Inman, Superior Township, McPherson County, KS | \$7.00 |
| Deaths - Recorded Deaths of Reno County 4 volumes, 1890-1911 & Index | \$17.00 |
| Homestead Records of Reno County Name, location & file date 1875-1945 | \$21.50 |
| Marriages - Marriages of Reno County 1872 - 1913 | \$23.00 |
| Naturalization Records of Reno County Index 1875-1955 filed at courthouse | \$12.50 |
| Teachers of Reno County / 1884-1966 Color map of school districts included | \$21.00 |
| The Sunflower Back Issues - Per Year Only | \$ 5.00 |
| Harper's Weekly 1888 - The City of Hutchinson - featured supplement - PDF on CD | \$5.00 |
| Plat Book of Reno County 1902 - PDF on CD | \$10.00 |
| Postage & Handling included in price / Kansas residents add 7.05% sales tax | |

*** ORDER FORM INSIDE ***

RENO COUNTY GENEALOGICAL SOCIETY
P. O. BOX 5
HUTCHINSON, KS 67504-0005

RETURN SERVICE REQUESTED



59
M-53 12/1/2007
MCMANNIS, DARREN J.
PO BOX 387
NORTH NEWTON KS 67117-0387

