

THE SUNFLOWER



RENO COUNTY GENEALOGICAL SOCIETY
P. O. BOX 5
HUTCHINSON, KANSAS 67504-0005

ISSN -1048-048X

VOLUME XXVIII, NO. 3

AUGUST 2006

The Reno County Genealogical Society

The Reno County Genealogical Society of Hutchinson, Kansas was founded in 1978 for the purpose of fostering genealogical research, promoting the exchange of information and encouraging the deposit of genealogical and historical materials in established libraries and archives.

Membership in the Reno County Genealogical Society is open to anyone interested in genealogy. Dues are \$12.00 per year per family, as of **1 January to 31 December of each year.**

Meetings are held on the third Monday of each month (except December) in the Children's Story Room of the Hutchinson Public Library, Ninth and Main, 7-9 p.m.

RENO COUNTY GENEALOGICAL SOCIETY OFFICERS FOR 2006

President	Karen Burgess
Vice President	Ann Lambert-
Treasurer	Jim Stoecklein
Recording Secretary	
Corresponding Secretary	Pam Stansel

COMMITTEES

Quarterly Editor	Ruth Hair Filbert
Membership Chairman	Pam McAllister
Historian	Rita Lingg
Librarian	Ann Lambert
Publication Sales	Sandy Wedman
Web coordinator	Ann Lambert
Book and CD Acquisitions	Doris Phillips
Obituary File	Alice Phillips
	Doris Phillips
Research	Gale Wall

Web site:

<http://rootsweb.com/~ksrcgs/renocokansas.html>

KCGS Web site: <http://skyways.lib.ks.us/genweb/kcgs/index.html>

THE SUNFLOWER

The Sunflower is published quarterly by the Reno County Genealogical Society, P. O. Box 5, Hutchinson, Kansas 67504-0005

ISSN-1048-048X

Editor: Ruth Hair Filbert, Hutchinson, KS

Volume XXVII, No. 3, AUGUST 2006

RESEARCH LIBRARIES

Hutchinson Public Library
 901 N Main, Hutchinson, Kansas 67501
 620-663-5441
 Mon.—Fri. 9:00 a. m. to 9:00 p.m.
 Sat. 9:00 a. m. to 6:00 p.m.
 Sun. 1 to 5 p.m.

**Reno County Historical Society and
 Reno County Museum**
 100 S Walnut
 620-662-1184
 Closed Monday
 Tues. to Sat. 9:00 a.m.—5:00 p.m.
 Sun. 1-5 p.m.

**HUTCHINSON FAMILY HISTORY
 CENTER**
 518 East 43rd Street, Hutchinson, KS
 620-665-1187
 Tuesday 1—5 ;.m.
 Wednesday 9:30 a.m. — 8:30 p.m.
 Thursday 9:30 a.m. —5 p.m.

**Kansas State Historical Society
 Center for Historical Research**
 6425 SW 6th Street
 Topeka, KS 66615-1099
 785-272-8681

TABLE OF CONTENTS, VOL. XXVIII, NO. 3

IN THIS ISSUE

	PAGE
Missouri Death Certificates and Genealogical Tidbits Message from the Federation of Genealogical Societies	60 — 62
Harry Morgan—Passenger Conductor	63
Alexander Shultz & Elenora Glotfelty Family	64
Reno County School District Personnel 1941-1942	65 — 69
KCGS 2006 Genealogical Conference Highlights	72-73
Clippings from the Hutchinson Daily Gazette	74-77
Membership list	78-79
Index to August 2006 issue	82

RCGS PROGRAMS

21 AUGUST—Bob & Betty Steele—An informational Discussion on Family History Library in Salt Lake City

18 SEPTEMBER – Ann Lambert — Ghost Towns of Kansas

16 OCTOBER—FAMILY HISTORY MONTH— POT LUCK DINNER 5:30 P.M. AT DELOS SMITH CENTER

20 NOVEMBER — Bill Rexroad - Unexpected Discoveries

DECEMBER — No General meeting

IMPORTANT DATES

15 Aug 2006 —Family History Entries due for Kansas State Fair—Fine Arts-Genealogy.

30 Aug—2 Sep 2006 — Federation of Genealogical Societies Conference in Boston, MA

12 Oct 2006 KGS 9:00 a.m. to 2:45 p.m. Village Square Mall, 2601 Central, Dodge City, KS.

Jeanette Daniels, Salt Lake City. Migration—Virginia, North and South Carolina and Church Records: How to find them.

The Reno County Genealogical Society is a member of the Federation of Genealogical Societies, the National Genealogical Society and The Kansas Council of Genealogical Societies.

MISSOURI DEATH CERTIFICATES

The Missouri State Archives now offers the Missouri Death Certificate Database. It's a new online index and images. Currently the index covers from 1910 to 1955 and the images date from 1910 to 1920. It is at:

<<http://www.sos.mo.gov/archives/resources/deathcertificates/>>

The above new site is great for those that have Missouri ancestors. They are also digitizing the actual certificates so that you can read them online. The cost of getting a copy is only \$1.00. However, because of the value of the new site they have been overwhelmed by requests. The following has been copied from their website.

Death Certificates, 1910-1955

Important death Certificate Announcement Optional Expedited Service

The Missouri Death Certificate Database has proven widely popular. Researchers conducted over half a million searches within the first days of the database's release. This amount equals nearly five months of searches on all the Missouri State Archives' other online databases combined. Within two weeks, we have received requests to copy 7,000 death certificates. At the same time, we have received 700 e-mail queries regarding the database. These numbers continue to grow. We are pleased that so many people are benefiting from this database. Unfortunately, this unprecedented response is overwhelming our staff, who must also complete their regular duties. As a result, staff response to copy requests is currently taking up to twelve weeks.

We are committed to reducing the wait for patrons. To help relieve demands on staff, we have accelerated the schedule for release of online images. Rather than releasing images by decade, we will release images as scanning for each year is completed. Already, we have added 1921-1923 and expect to add 1924 very soon. Images to 1925 will be released by the end of June 2006, and we anticipate having images up to 1930

available in September 2006. We have also hired temporary staff to help us meet the initial requests for copies.

Knowing the challenges we face in meeting this demand, the Friends of the Missouri State Archives has volunteered to provide expedited service for those patrons who need their copies sooner than we can provide them. The Friends of the Missouri State Archives—a no-for-profit 501 (c) (3) organization that supports the activities of the Missouri State Archives—has offered to hire and oversee additional workers to copy death certificates. *To cover the cost of this program, and additional fee will be charged for each copy.*

This expedited service is optional. Copies will still be available at the cost of \$1.00 for anyone that prefers to have their request completed by the Missouri State Archives staff. For those who would like faster service from the Friends of the Missouri State Archives, copies will be available for \$5.00 per name requested. There is also no limit to the number of requests that can be made through the Friends. Fees generated from this service will be dedicated exclusively to the death certificate project. As you search the database, you will find instructions on how to request copies from either the Missouri State Archives or the Friends.

We hope that these measures make an already successful project even better for our patrons. Our goal is to provide you with the fastest and most efficient service possible. We are grateful for your patience as we strive to meet that goal.

(under construction, Quarterly Newsletter of the Mendocino Coast Genealogical Society, May, 2006)

NEW GENEALOGICAL MAGAZINE

There is a new genealogy magazine on the newsstand called "Internet Genealogy" from the publishers of Family Chronicle. A free issue can be found on the Internet Genealogy's website <www.internet-genealogy.com> that you can download.

A few of the articles that I found in the July 2006 issue are:

- Creating a Family Website—Branching Out: Putting Your Family History on the ‘Net
- Genline—Swedish Sources for Swedish Roots
- Free Online Newsletters
- Podcasts—Now Play Genealogy Podcasts

The following two articles are from Eastman's Online Genealogy Newsletter and is copyright 2006 by Richard W. Eastman. It is re-published here with the permission of the author. Information about the newsletter is available at <http://www.eogn.com>.

Genealogy and Health

Genealogy has become an interest of mine and, in search of my long-gone ancestors I have found that there is more than family history as we know it here. In genealogy we find the clues to our own history of illness or lack thereof and so it is with interest that I saw the Surgeon General of the U.S. realized a software tool to help all of us with our health would be a good idea. My Family History Portrait is free software that you can download and use. The site describes it as: "a visual depiction of your family tree. It is constructed using circles and squares to see who is related to whom and how they are related. In terms of health and disease, a family health portrait can help show a health care provider how a particular trait or disease is passed on from generation to generation."

So, in addition to helping you pass this valuable information on to other family members, it's a way of seeing how health is a part of genealogy. For the free software that you can download go to:

<<http://www.hhs.gov/familyhistory/order.html>>

PROGENY SOFTWARE ANNOUNCES NEW WEB SITE

The following is an announcement from Progeny Software:

New Progeny Genealogy web site contains your genealogy software and charting needs. The new Progeny Genealogy web site, <<http://www.progenygenealogy.com>> is now home to all of Progeny's genealogy add-on products.

OLD DISEASE NAMES AND THEIR MODERN DEFINITIONS

Would you know what the following diseases were if you read about them in a family diary, death certificate or obituary?

- Ague
- Bad blood
- Canine fever
- Dry bellyache

If you don't, there is a website that will explain what old names referred to and what modern medical knowledge now calls them. The website is <<http://www.pricklytree.webhostingpal.com/tools/>>

KANSAS STATE FAIR

Members of the Reno County Genealogical Society will be giving short genealogical workshops at the Kansas State Fair.

Karen Burgess, Sandy Immosote Wedman, Gale Wall and Ruth Filbert met in our motel room in Emporia before the KCGS conference to design a folder to be used during the workshop.

Plans, as to time and subjects, are being made at this time, but they should be finalized soon. The workshops will be held in the Oz building at the fair, close to the place where family histories are displayed.

The first part of the program will be on "Beginning Genealogy" followed by a question and answer period. The second part will be on a specialized subject, such as, Research on the Internet.

If you are available to help with this project, please notify Karen Burgess or Ruth Filbert.

Do Not Assume

- 1) Just because a BMD is registered in a county, does not mean your Ancestor lived in that county.
- 2) Never presume an Ancestor has only been married once.
- 3) Never presume a Visitor is not related.
- 4) Never presume a Marriage Witness is related.
- 5) Never believe someone is not your Ancestor just because the name is not what you think it should be.
- 6) Remember that census takers used the name that they were given, such as nickname, middle name, etc.
- 7) Remember most of our Ancestors could not read or write, or knew exactly how old they were.
- 8) Never presume that an ancestor died in the county where he was known to live. He could have died while living or visiting in another county/state.

RESEARCH COSTS

NARA research costs \$10.00 per person and the www.grandmaupatree.com costs \$15.00 to research per person.

With either to do this research you must know where the person lived and the relative that lived nearest to them.

VIDEOS FROM NARA

Spotlight Historic videos now online thanks to Google by A. Hagedorn, Information Technology Assistance Center published Feb. 28, 2006

Search-engine company Google.com has joined efforts with the U.S. National Archives and Records Administration to put historic video footage online. Among the first videos to be digitized from the National Archives collection of 114,000 film reels and 37,000 videos are

- * U.S. government newsreels documenting World War II
- * motion picture films from the 1930s
- * space flight

The good news is that all of the videos are public domain, so educators, historians, and filmmakers can use these clips without fear of copyright infringement.

To view what Google has completed so far, visit <http://www.video.google.com/nara.html>.

MESSAGE FROM THE FGS BOARD

Delete Button – Friend or Foe?

Martha Henderson
FGS Secretary

Everyone would agree the delete key makes it easy to banish annoying spam from e-mail boxes. Additionally, the delete key cleans out mailboxes by getting rid of non-essential messages. Periodic 'house cleaning' is necessary; however, for those of us involved with the running and managing of a genealogy or historical society, are we losing the day-to-day record of society activities?

As more of your society's business is conducted online, is there a person or committee collecting online society business? For example, as chair of the fund-raising committee, your committee has just concluded an extensive online discussion on the merits of several fund-raising ideas, two of which will be presented at the next board meeting. Before you delete that thread of discussion, or file it way in an online committee file, is there someone in your society to whom you can forward the thread for possible inclusion in the society's archives?

As historian for several nonprofit organizations, I have processed the records of past society leaders whose files are full of real, honest to goodness letters and memos. Most contain handwritten notes indicating action taken about a particular society project or program. Are we keeping this type of online record? Will future generations understand the background behind society decisions? As members of organizations that work tirelessly to uncover all types of records concerning our ancestors, are we shortchanging the records of our own society?

I would love to hear from anyone who is saving online society records. Your efforts to keep the delete key at bay are most welcomed and could be featured in an upcoming article. Please e-mail me at hendermartha@sbcglobal.net

Harry Morgan - Passenger Conductor

As I research the cemeteries of Reno County I often come across a headstone that makes me pause and wonder about that person. Such is the case with Harry Morgan. At the Wildmead Cemetery in Nickerson, KS is the resting place of Harry. His fairly large headstone is enclosed with a fence. Other than the articles in the newspaper about him being shot and his death very little was found about him. Perhaps one of our readers will know more.



- The Hutchinson Herald 9/4/1880: Harry Morgan, of Nickerson, a conductor on the A. T. & S. F. railroad, was shot by a laboring man on the train, while near Ellinwood, last Tuesday. The train was going west, and a party of men were on board en-route to New Mexico, for the purpose of working on the road. They seemed to "feel their oats" considerably, and a squad of them were on top of one of the coaches conducting themselves in a noisy and beastly manner. At the command of the conductor they all came down and took their seats inside the coach except one Montgomery, who engaged in an altercation with Mr. Morgan, and being requested by the latter to put away a revolver which he had drawn, commenced cursing, and placing the muzzle of the weapon close to Mr. Morgan's person, pulled the trigger. The ball lodged in the upper abdomen, making a severe though not necessarily fatal wound. The would-be assassin was placed in jail at Great Bend. There was considerable talk of lynching.

- The Argosy 9/8/1880: Shooting of Conductor Harry Morgan

- The Argosy 9/22/1880: Death of Conductor Morgan

Sunday morning last a gloom was thrown over our city by the report of the death of Conductor Harry Morgan, whose death occurred at quarter of six on that morning. He had, apparently got along so well ever since he was shot that everyone supposed he would recover... Mr. Morgan was 37 years of age. He had been in the employ of the Santa Fe railroad for five years, a resident of Nickerson over a year and served his country four years during the war. He was a passenger conductor on the railroad and enjoyed the confidence and stood high in the estimation of the officers of the company, and was an honored and highly respected citizen. He was a loving and faithful husband and leaves an equally loving and faithful wife to mourn his loss.

- The Hutchinson Herald 9/25/1880: M. J. Ruddy's hearse was taken to Nickerson Tuesday afternoon, to take the remains of conductor Morgan to the cemetery.

-1880 Nickerson, Grant Township, Reno County,

Kansas Federal Census: Harry Morgan age 30.

Married. Conductor. Born in Maryland. Parents born in United States. Ella Morgan. Wife. Age 23. Married. Keeps house. Born in United States. Birth place of parents not listed.



Submitted by Gale Wall

Alexander Shultz & Elenora Glotfelty Family

Name: Alexander SHULTZ

Birth: 14 Nov 1829 Elk Lick, Somerset County, PA
 Death: 25 Nov 1906 Hutchinson, Reno County, KS
 Burial: 27 Nov 1906 Eastside Cem., Hutchinson, Reno County, KS
 Father: Adam SHULTZ (1789-1864)
 Mother: Nancy SHOCKEY (1802-1893)

Spouse: Elenora GLOTFELTY

Birth: 24 Jul 1835 Grantsville, MD
 Death: 1 Apr 1909 Varner, Kingman County, KS
 Burial: 3 Apr 1909 Eastside Cem., Hutchinson, Reno County, KS
 Father: Joseph GLOTFELTY Sr. (1802-1864)
 Mother: Sarah Ann COMPTON (1809-1864)
 Marriage: 31 Aug 1850 Allegany County, Maryland
 Children:
 Sarah A. (1852-1870)
 Joseph Adam (1854-1930)
 Lydia C. (1857-?)
 John C. (1860-1865)
 Robert Lee (1863-1895)
 Nancy L. (1865-1865)
 Andrew Bailey (1866-1947)
 Kitty May (1869-1953)
 Meshach Alexander (1871-1955)
Henry Edwin "Harry" (1875-1943)
 Rosella Belle (1877-1941)
 Elsie Viola (1879-1951)
 Chauncy F. (1881-1962)



Henry Edwin Shultz married Dolly Carena Baker. Henry was an overseer at the Yaggy Plantation. Their son Harry Merwin is my husband's grandfather.

Macoupin County [IL] Enquirer - Wed March 23, 1887

Aleck Shultz and family and John Brown and family started for Kansas last Friday [3/18/1887]



Alexander & Elenora Glotfelty Shultz



Home of Alex in 1906. E Park Street
 Photographed May 2006

Submitted by:
 Gale Wall

**RENO COUNTY SCHOOL
DISTRICT PERSONEL
1941-42**

Continued from May 2006

District 136 **So. Hutchinson**
(Teachers) A. B. Collins, Hutchinson R2
H. W. Utterback, Hutchinson
Darlene Williams, Hutchinson
Elizabeth Stoffer, Hutchinson
Twila Fishburn, Hutchinson
Virginia Lyman, Hutchinson
Iris Koontz, Hutchinson
Wilma Symns, Hutchinson
L. A. Goatley, Custodian
(Board Members) Frank W. Hart, Hutch
M. L. Stewart, Hutchinson
H. F. Kellerman, Hutch

137 **Abbyville**
Glenn O. Seaton, Abbyville
Agnes Knoefel, Abbyville
Erma Boyd, Plevna
D. R. Fesler, Abbyville
Clifford Birket, Abbyville
L. O. Bridgeman, “

138 **West Eureka**
Mary Louise Dellenbach, Abbyville
C. E. Thompson, Partridge
Mrs. Elizabeth Carpenter, “
Lewis Murray, Partridge

139 **Haven**
Orville Wilson, Haven
Vera Hiett, Haven
Gail Davis, Haven
Caroline Beltz, Haven
Wilma Hunter, Haven
Lewis Burford, Haven
A. B. Shull, Custodian
Dr. F. V. Curtis, Haven
C. E. Heidebrecht, Haven
Louis Guhl, Haven

140 **Riverton**
Mary E. Shelton, Cheney
N. W. Ayres, Cheney
Ed Lubbers, Cheney
W. E. Oliver, Cheney

141 **Sunflower**
Letha Yardley, Hutchinson
W. L. McFarland, Burrton
J. V. Regier, Burrton
Scott R. Hensley, Burrton

142 **Grand Valley - No School**
H. A. Dimmitt, Turon
Chas. Hansen, Turon
E. T. Martin, Turon

143 **Fairmount**
Freda Bachus, Abbyville
G. W. Hirst, Partridge
W. H. O'Hara, Partridge
Peter Wagler, Partridge

144 **Harmony**
Ruth Woolsey, Hutchinson
Mary Tucker, Hutchinson
W. D. Yoder, Haven
N. J. Miller, Yoder
Robert Showalter, Yoder

145 **Sargent**
Opal Davidson
O. P. Kreie, Sylvia
V. C. Algrim, Zenith
H. L. Brownlee, Sylvia

147 **Sam Hill - No School**
W. R. Givens, Pretty Prairie
D. J. Ratzlaff, Pretty Prairie
Herbert Krehbiel, Pretty Prairie

148 **Elmer**
Ferne Cox-Hadley, Hutchinson
E.E. Crupper, Hutchinson
T. D. Ball, Hutchinson
John McMurry, Hutch

149 **Pretty Prairie**
 Bryce Todd, Pretty Prairie
 M. D. Woods, Pretty Prairie
 Lois Newcom, Pretty Prairie
 Ellen Kautzer, Pretty Prairie
 Mr. Bush, Custodian
 Ed Krehbiel, Pretty Prairie
 Lonnie McCubbin, “ “
 J. R. Hosey, Pretty Prairie

150 **Buhler**
 Ervin H. Schmidt, Buhler
 Edward Boggs, Buhler
 Mrs. J. R. Wedel, Buhler
 Betty Long, Buhler
 Rosa Kim, Buhler
 Adeline Sweeney, Buhler
 F. F. Matthies, Custodian
 Ben Kim, Buhler
 C. N. Hiebert, Buhler
 Otto P. Schmidt, Buhler

151 **Hill** No School
 C. J. Schmidt, Buhler
 H. W. Buller, Buhler
 A. J. Pauls, Inman

152 **Daisy**
 Daniel Diener, Hutchinson, R2
 John M. Bontrager, Haven
 J. T. Schrock, Hutchinson
 Rufus J. Schrock, Hutch...

154 **Bethel**
 Lena Denton, Abbyville
 George Haas, Plevna
 Mrs. Earl R. Boyd, Plevna
 C. E. Witter, Abbyville

155 **Walnut** No School
 Mrs. Ruth Wyman, Penalosa
 Merle Bradshaw, Langdon
 J. E. Loeppke, Penalosa

156 **Crescent**
 No School

157 **Clark** No School
 Mrs. Helen Thayer, Arlington
 Guy Clark, Arlington
 Ernest Massow, Arlington

159 **Woods** No School
 Mrs. Bessie Smiley, Arlington
 Mrs. Cora Duvall, Arlington
 J. C. Fesler, Abbyville

160 **Sunrise**
 Edna Ruth Mueller, Buhler
 Henry Unruh, Buhler
 A. C. Thiessen, Inman
 I. C. Thiessen, Buhler

PAROCHIAL SCHOOL:

Haven Lutheran

Herbert Einspahr, Haven
 Christine Resner, Haven
 Albert Kinast, Haven
 A. E. Stecher, Haven
 J. H. Popp, Haven

SECOND CLASS CITY:

24 **Nickerson Grade**

S. E. Earl, Nickerson
 Dorothy Elmore, Nickerson
 Ala Russom, Nickerson
 Mary Jane McKissick, Nickerson
 Gladys Lauver, Nickerson
 Clayton Detter, Nickerson
 Jo Ellen Lawrence-Waits, Nickerson
 Doris Noel, Nickerson
 Iva McDill, Nickerson

George Pate, Chairman, Nickerson
 Ernest Bozeman, Vice Chr. “
 Paul Alexander, Clerk, Nickerson
 Bert Vinson, Nickerson
 Jess Arbuckle, Nickerson
 Dr. Robert Aelmore, Nickerson

RURAL MUSIC SUPERVISORS:

Mrs. Lucille Brown-Little, Hutchinson
 District No. 23, 30
 Armond Poulton, Hutchinson
 District No. 97

Fern Seelinger, Abbyville
 C. D. Watts, Abbyville
 Rena Richardson, Abbyville
 Sam Ehling, Custodian
 Lawrence Deck, Abbyville
 S. P. Schmucker, Abbyville
 F. M. Dunn, Abbyville

RURAL HIGH SCHOOLS

- | | | | |
|---|--|---|--|
| 1 | Arlington
J. W. Powers, Arlington
A. L. Miller, Arlington
J. A. Fernpotto, Arlington
Maxine Ferris, Arlington
Dorothy Gudgell, Arlington
Glenn C. Garten, Arlington
A. L. Guyer, Custodian
Claude S. Moore, Arlington
J. B. Smiley, Arlington
Emery M. Moore, Arlington | 5 | Langdon
Ralph Stutzman, Langdon
Alfred L. Barnes, Langdon
Fred H. Nace Jr., Langdon
Inez Lawellin, Langdon
Edith Rickers, Langdon
O. E. Holmes, Custodian |
| 2 | Partridge
C. C. Ross, Partridge
Eric Friesen, Partridge
A. F. Ayers, Partridge
Margaret Smith, Partridge
Ruth Cole, Partridge
Don Milliken, Partridge
Fritz Hirst, Custodian
Bernard Koestel, Partridge
Vernon Hornbaker, Hutchinson
Roy Terrill, Hutchinson | 6 | Pretty Prairie
Marvin Forker, Pretty Prairie
LaVerne Barton, Pretty Prairie
Margaret Breneman, Pretty Prairie
Gilbert Galle, Pretty Prairie
Frances Graber, Pretty Prairie
Robert Crow, Pretty Prairie
Kenneth Hunter, Pretty Prairie
Lon Spaulding, Custodian
W. W. Graber, Pretty Prairie
Wayne Newcom, Pretty Prairie
R. O. Notestine, Pretty Prairie |
| 3 | Plevna
M. P. Haymond, Plevna
Gwenn Reimer, Plevna
Dohn Miller, Plevna
Albert Gantz, Plevna
Albert J. Holthoefler, Plevna
Everett Feese, Custodian
L. C. Goodrich, Plevna
L. G. Hill, Plevna
George Haas, Plevna | 7 | Sylvia
Edgar Reed, Sylvia
Elmer Linscheid, Sylvia
Louise Weniger, Sylvia
Alice Norris, Sylvia
W. D. Knorp, Sylvia
Lloyd H. Shoop, Sylvia
Clarence Witte, Custodian
H. L. Brownlee, Sylvia
Anton Mothes, Sylvia
J. F. Green, Sylvia |
| 4 | Abbyville
Edgar F. McRill, Abbyville
Mary Lee, Abbyville | 8 | Turon
Kenneth S. Hill, Turon
Kathryn Millard, Turon
W. A. Best, Turon
Lotta M. Stroud, Turon |

RENO COUNTY OFFICIALS 1941

County commissioners:

First District Chas, Hitchcock, Chr.
 Second District Dan Forker
 Third District Stanley Hill

Judge of District Court

Franklin Hettinger

Clerk of District Court

Glenn Williams

County Attorney

Arthur Symns

Sheriff

Guy Ankerholz

Probate Judge

A. B. Leigh

County Superintendent

A. R. King

County Treasurer

Chester Hendershot

County Clerk

Tom Hogan

Register of Deeds

George Walters

County Coroner

H. M. Stewart

State Senator (Reno, Kingman, Pratt)

Walter F. Jones

State Representative, 75th District

Jack C. McCarroll

State Representative, 76th District

Frank Miller

APPOINTED OFFICERS

County Auditor

Clair Hyter

County Engineer

L. G. Dale

Farm Agent

Donald Ingle

Probation Officer

L. W. McMillin

County Doctor

J. N. Hill

Welfare Director

Violet Fischer

Microsoft Live Local

Microsoft have now brought out a product (free to use so far) in Beta, that in some respects is better than Google Earth. The whole of England (not looked at Wales as yet) is covered by "Microsoft Live Local" in high resolution aerial imagery, that's a failing of Google. The only drawback, as with Google, is that the areas covered by high res images are not up to date (at least 5-7 years old).

The URL is :- <http://local.live.com/>

PHOTO DATING

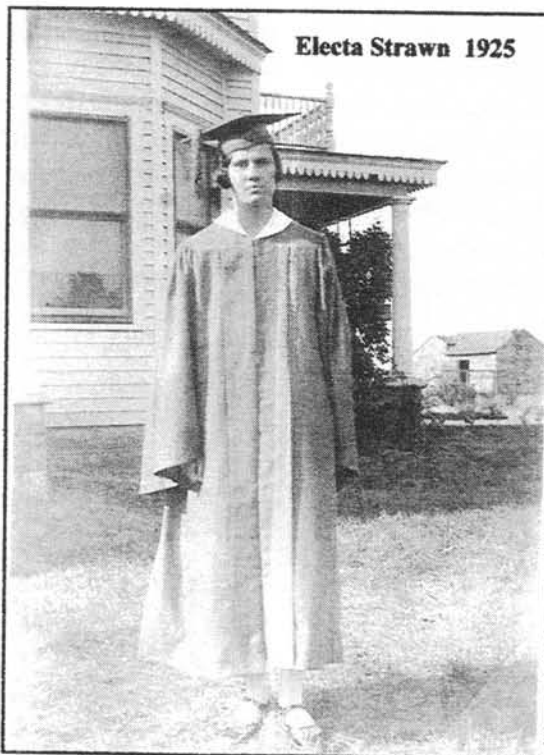
Try these sites if you are trying to date a photo.
<http://www.familychronicle.com/phototip.htm>

<http://www.cartes.fsnet.co.uk/index.htm>

KANSAS STATE FAIR

The Reno County Genealogical Society will have 4 sessions of beginner genealogy lessons followed by 4 sessions of varied subjects at the Kansas State Fair. They will be from 1-3 p.m. on both Saturdays and from 10-12 a.m. on both Sundays. Marge Hermstein from the Register of Deeds Office in Newton will talk on Using Land Records in the Register of Deeds office and Naturalization.

Reno County High School - Circa 1925



Electa Strawn 1925

Back row: Ralph Duncan, Orville Bookless, Dean Earl, Harry Wainner, Irwin Justice, Thelma Stange, Pauline Frisch, Helen Koontz, Dorothy Ashrman, Stacey Kittle,

Middle row: Dorothy Delter, Eloise Howard, Frances Layman, Electa Strawn [married Harry Merwin Shultz], Edwin Kroker, Bobbie Dawson, Presley Cowan, Merlin Mundell, Clifford Rayl, Frances Hemphill - teacher,

Front row: Mable Shardein, Lela Henson, Irene Jimmerman, Olive Layman, Mildred Buxton, Alma Cooper, Geneive Kepner, Doris Fair, Tacy Lyson, Elva Snodgrass.

Electa Strawn graduated from Reno County High School in 1925. This is probably her class picture for that year. Electa is my husband, Barry's, grandmother.

Submitted by Gale Wall

ORPHANED PHOTOS

By Gale Wall

How many times have you browsed through an antique or second hand store and found old family photos for sale? My reaction is the same every time - I shake my head and wonder how this can happen. I then vow to prevent the same from happening to my family photos. From time to time I will purchase a photo if it has a name on the back, with the hope of sending it home to a descendant. I (try to) limit my purchase to less than \$2.00, since I don't ask for reimbursement. My latest purchase was from an antique store on Main Street in Hutchinson. The back is labeled **Maxine Ellis 1914**.



I estimate her birth around 1911 or 1912. Checking the 1920 Federal census in or close to Kansas I find a 9 year-old Maxine, daughter of John and Etta Ellis, living in Benedict City, Wilson County, KS. This same Maxine is in her parents household in the 1930 Clifton Township, Wilson County, KS Federal census, as Maxine J. Polson, age 19. Married at age 18, with a 3 year and 1 month old son, Donald L. Polson.

The 1930 Sedgwick County, KS Federal census lists an 18 year-old Maxine, daughter of Maud Ellis. I located Maud and Maxine in the 1920 Oklahoma County, OK Federal census, with Leroy Ellis as head of household.

Will one of these Maxine's be the one I am looking for? I'm not sure, so the hunt continues. Perhaps one of our readers will know. What do each of us have planned for our precious photos when our time has passed? Will they be treasured by the next generation? Or possibly find themselves for sale on a dusty shelf, waiting to go home again?



To date, I only have one that I haven't sent home [not including Maxine Ellis]. She's been with me since February 2005. I have information on her short life, but haven't traced her 2 children to find a descendent. Until such time, she sits in my genealogy room and keeps me company. It is labeled: Miss May Kiblinger, Jackson, LA.

May Ruth Kiblinger Thompson

9/6/1858 - 6/1/1890

Buried: Oak Knoll Cemetery, Bellville, Austin Co., Texas

- Husband: James E. Thompson 6/30/1846 - 3/9/1909

- Daughter: May born about 1882

- Son: Ned born about 1886

2006 Kansas Council of Genealogical Societies Conference

Featured speaker - Sharon DeBartolo Carmack - www.sharoncarmack.com - was accompanied by Jim Warren, who took care of the sound system and book sales.



Pictured: Jim Warren, Sandy Wedman, Sharon DeBartolo Carmack, Carolyn Miller, Ruth Filbert, William Rexroad, Becky Hatton, Jim Stoecklein, Karen Burgess, Rita Lingg and Gale Wall.

There were 86 people registered for the Kansas Council of Genealogical Societies Conference in Emporia June 10th. Reno County was represented by Karen Burgess, President of RCGS and Recording Secretary of KCGS; Jim Stoecklein, RCGS Treasurer; Ruth Filbert, KCGS Vice President and RCGS Editor; Sandy Wedman, RCGS Publications Chairman and members: Rita Lingg, Bill Rexroad, Becky Hatton, Gale Wall and former member, Carolyn Miller. The programs presented by Sharon DeBartolo Carmack were informative, especially the one on copyright.

For those of you who are not members of KCGS, Janeice Crosson, KCGS Newsletter Editor, sent out an excellent four page newsletter the 16th of June via e-mail. The newsletter gave a brief summary of the KCGS annual conference and included many pictures of the people in attendance. Membership is open to any individual. The dues are \$15.00 a year and include the Kansas Review, KCGS quarterly.

Comments from some of the attendees:

Karen Burgess:

For me the best part of going to any genealogical conference is that it gets my genealogical juices all fired up. I always get fresh ideas on how to do research, and it's just a lot of fun.

Ruth Filbert:

The "Flesh on the Bones" made me more aware of the social history that can be found in magazine articles and "books of that time period". It was an excellent conference and many thanks go to the Flint Hills Genealogical Society for their arrangements. A new first for Karen and I, stopping on the way home from Emporia to give Gale a chance to photograph a little cemetery along the road side near Strong City.

Rita Lingg:

The KCGS Conference was informative and entertaining with Sharon DeBartolo Carmack giving new ideas and direction in her well presented lectures. The "Flesh on the Bones" presentation pointed out the value of adding personal and social history to our ancestor's stories making them interesting reading for our relatives and friends. These details make our family come to life and hopefully will encourage interest for our younger members.

Bill Rexroad:

The speaker was quite good from beginning to end. The part I liked best was the session on copyright.

Jim Stoecklein: I really enjoyed the presentation about "Flesh on the Bones". The regrettable part is that I have no social history to relate to, other than my growing up years, with my grandparents because they were either gone before I was born or died when I was quite young. I didn't take the time to visit with my parents about their growing up years because I never thought about genealogy. Now I have so many questions that I dream about it. I also enjoyed the "Copyright" presentation but was somewhat shocked by all the restrictions. I have many pictures, mostly family, in my Family Tree maker album that would be in violation if I were to publish. I also enjoy visiting cemeteries but was a little bit disappointed in her presentation. How to identify the time period by the Headstone material was interesting.

Gale Wall:

This was my first conference and I really enjoyed it. It was very informative and I came away with new ideas. I like Sharon's book "Your Guide to Cemetery Research". You will find me rambling around Reno County [and other places] photographing cemeteries.

Mark your calendars for the 2007 conference!

June 16, 2007

Salina, KS

Co-hosted by the Smoky Valley Genealogical Society

As time nears, check out the KCGS website:

<http://skyways.lib.ks.us/genweb/kcgs/index.html>

Compiled and submitted by Gale Wall

**CLIPPINGS FROM
THE HUTCHINSON DAILY GAZETTE**

January 6, 1917

SOCIETY

Mr. and Mrs. Fidell Schmidt of B avenue west are the parents of a boy born Wednesday, January 13.

Mrs. W. H. Miller has returned from Salina, where she was called sometime ago by the serious illness of her father.

Miss Helen Tyler has returned from a ten days' visit in Kansas City with Dr. and Mrs. Harry Holaday.

Miss Blanche Mullen leaves today for Burlington, where she is teaching in high school this winter.

Miss Vera Gano has gone to Kansas City for a week end visit on her way to Washington, D. C., where she is attending school.

Mrs. Margaret Farrell left yesterday for New York, where she will spend the winter with her daughter and son-in-law, Mrs. and Mrs. Harry Sinclair.

Mr. and Mrs. A. G. Glendall left last night for a two weeks' visit in Des Moines, Iowa.

Mr. Norval Sifers left last night for Culver, Ind., where he is a student at Culver Military academy.

January 7, 1917

Deaths of a Day

SAMUEL DAVID CALDWELL

**Well Known Plevna Man Laid to Rest
Friday Afternoon**

Samuel David Caldwell was born December 19, 1851, in Montgomery county, Ohio, and died January 4, 1917, at Plevna, at the age of sixty-five years and fourteen days. His early life was spent at his birthplace. He was married August 17, 1872, to Miss Hannah Landis, who survives him. They came to Kansas March 25, 1887, lo-

cating in Plevna. Mr. Caldwell was a kind companion, a loving father, and a respected citizen. He was mayor of Plevna for several years. When his time came to depart this life, he passed away peacefully. He had been in poor health for a year and a half. Rev. O. H. Feller of this city conducted the funeral services Friday afternoon at one o'clock. Sister Caldwell keenly feels the loss of a loving husband, the children that of a kind father, and the city that of a good neighbor. The surviving relatives are Mrs. Allie Davis, Warrensburg, Mo.; Fess Caldwell, San Francisco; Mrs. Anna Sharp, Clay Center; Daniel Caldwell, Wenatche, Wash.; John Caldwell, Plevna; Mrs. Bertha Seachris, Bellaire, Kan.; Mrs. Dora Brock, Cando, N. D.; Mrs. Susie Reed, Hutchinson, and Mrs. Mary Gaughman, Warrensburg, Mo., the latter his only sister.

HERBERT NORRIS DEAD

**Boy of Eight Years Succumbs to
Attack of Diphtheria.**

Herbert Norris, son of Mr. and Mrs. G. W. Norris, of 301 Twelfth avenue east, died at 5¹⁰ o'clock last evening, from the effects of an attack of diphtheria. Herbert leaves to mourn his loss, his father and mother, a brother, Fred Norris of Topeka, and a sister, Georgiana Norris of Hutchinson. He was eight years, three months and three days old at the time of his death.

January 11, 1917

Deaths of a Day

H. J. ENGLE FOUND DEAD

**Aged Man Succumbs to Illness
of Several Years**

When Mrs. Allen Hall of Fourth avenue east, went next door to take supper to her neighbor, H. J. Engle, she found his lifeless body on the floor beneath the telephone. Dr. H. M. Stewart was immediately notified and an examination made.

Mr. Engle had suffered for years from asthma, and also had some heart trouble, and the supposition is that his death resulted from these ailments.

Mr. Engle had been unable to work much for the past two or three years, and Rev. and Mrs. Hall had been taking his meals to him and looking after him more or less. He lived alone at 614 Fourth east. His only known relatives live at Racine, Wis. And no arrangements will be made before they are communicated with.

February 3, 1917

SOCIETY

by Miss Helen M. Hayes, Phone 1601
Evening Party.

Mrs. Bruce King entertained informally last night for four visiting ladies from Wichita who formerly lived here, and are spending a few days with Mrs. Allen Winchester, Mrs. George Glazier, and Miss Jennie Colladay. They are Mrs. John Moore, Mrs. George Lowrie, Mrs. William Sage and Miss Nettie Kinney. Guests were limited to former schoolmates of the hostess and the out of town guests.

Mrs. C. D. Woodford has returned from Topeka, where she spent ten days' visiting friends and taking in the Kansas Day celebrations.

Mr. and Mrs. James Lochridge, who have been guests of Mr. and Mrs. C. H. Scott, returned yesterday to their home in Fayette, Mo.

Mr. and Mrs. O. F. Wright gave the second of a series of small dinners last evening at their home on Avenue A east.

The Mothers' club will hold a meeting Monday afternoon at 2:30 o'clock with Mrs. J. S. Sifers, 1015 North Main. Mrs. Emmett Hutton will be in charge of the meeting.

Mrs. E. Langille is seriously ill at her home, 406 Sherman street east.

Miss Blanche and Miss May Galloway leave tomorrow for a visit in Chicago, after which Miss May will enroll at Indiana University in Bloomington.

Miss Frances Hudson came yesterday from Winfield to visit her cousin, Miss Pearl Burge. Miss Burge has just come home from a four-weeks visit in Winfield with her grandmother.

**Pig Bristles Will Adorn Milady's Hat.
 Milliners Announce Successful Substitute for Aigrettes,
 Now Barred by United States**

Goose feathers and pig bristles have replaced the dainty aigrettes (An ornamental tuft of upright plumes, especially the tail feathers of a snow egret). The federal law prohibiting the sale of aigrettes went into effect today but milliners declare they have found a substitute in the goose feather and pig bristles which will deceive the most exacting connoisseur. The substitutes are put through various processes of burning and refining.

February 1, 1917

SOCIETY

S Chapter

Mrs. H. L. Scales and Mrs. O. R. Welch were hostesses to S chapter, PEO yesterday, at the home of Mrs. Scales. Quite a number braved the cold, and were rewarded with an interesting program. Roll call was answered with current events, after which the day's subject, "Etchings and Etchers," was ably discussed by Mrs. E. E. Ellsworth and Mrs. E. C. Aspey.

H. G. I. Club

Mrs. G. C. Tipton entertained the H. G. I. bridge club yesterday at her home. There were no guests. High score was made by Mrs. W. A. Montgomery. The next meeting will be with Mrs. George Faris.

Golden Grain Dance

The Board of Trade rooms were swept and garnished yesterday, and also waxed and decorated, for a party given by the younger men of the grain offices and board of trade for their friends.

Continued on page 76

The commercial cub rooms were also requisitioned for the card games that were part of the evening's entertainment. The party was designated as a Golden Grain dance, and will probably be followed by others of the same nature, as the grain folks discovered last night that they were pretty nice people and could have a fine time together. Even some of the older crowd, who weren't in on the party — but that's another story. In line with the name of the affair, the dances and extras were appropriately named, and the one-step, fox trot and waltz walk were supplanted by "primary shipments," "export demand," "peace rumor," and other familiar terms. Mr. and Mrs. W. H. Hastings acted as chaperons for the following crowd: Mr. and Mrs. N. P. Fair, Mr. and Mrs. Herman Graves, Misses Marie Nelson, Margaret Baer, Edith Brown, Celina LaGree, Florence Knox, Hazel Waggoner, Phoebe Boone, Julia Borgelt, Olga Boes, Sadie Webb, Anna Rosser, Ollie Wright, Tuley Sheperd, Mullen (sic), Gilberta Sweet, Leona Guth, Ethel Petersen, Vera Clark, Helen Haines, Josephine Caldwell, Lillian Reed, Alys McFarland, Stella Caskey, Elsie Shaw, Hazel Pettit, Hazel Hitchcock, Idel Pettit, Hazel Sluder, May Rishel, Rose Guth, Marie Guth; Messrs. John Mead, Marion Hitchcock, Don Martindell, Irwin Romer, J. B. Carr, Ed Reig, Gene Hipple, F. E. Smith, Ed Harper, Pete Sweetser, Lawrence Gabrielson, Eugene Cool, Leo Estey, Joyce Crick, Albert Smith, Jack Haggerman, Jimmy McKinstry, Petty Welch, Harold McKinney, Jesse Lankford, Ed Huckstep, Harry Robb, Claude McKinney, Frank Rospaw, Harold Slutter, Ben Canning, Cecil McKinney, Ray Bates, Frank Galloway, John Muns and Ed T. Marion.

W. C. T. U. Meeting

The W. C. T. U. held a social meeting yesterday with Mrs. A. Bradbridge on North Main. Devotionals were led by Mrs. W. Y. Armstrong. Mrs. C. W. Hill had charge of the lesson. Mrs. Myrtle VanEman resigned her position in connection with the Union Signal, the publication of

the order and Mrs. Hill was named to fill the vacancy. Mrs. J. A. West is superintendent of the Soldiers' and Sailors' department. Refreshments were served by Mrs. F. M. Ray.

C. C. Club Party

The ladies of the C. C. club decided to let their husbands in on the good times last night, and gave them a party at the home of Mrs. John Stallman on Eleventh avenue west. The evening was spent informally, with no set program beyond a few amusing contests and games. Mrs. Stallman served delicious refreshments at the close of the evening. Mr. and Mrs. Charles Stallman were special guests. The club will have a regular meeting this afternoon with Mrs. Ravencroft.

Mrs. Frank Cost spent yesterday in Wichita.

Mrs. J. Sloan and Miss Elizabeth Sloan, of Halstead, visited friends here yesterday.

Miss Hazel Hitchcock has issued invitations for a seven o'clock dinner to be given Wednesday, February 14, at her home.

Mr. H. O. Hayes is expected tomorrow from a visit at his home in Ness City.

Mr. and Mrs. E. E. Yaggy went to Kansas City yesterday for a few days, after which Mrs. Yaggy will go to New York to visit her sister, Mrs. A. W. Stone and Mr. Stone.

February 2, 1917

LITTLE GRAINS OF SALT AND SAND

Reuben Biound of Larned, was in the city yesterday on business. "This weather is hard on the young wheat," said Mr. Biound, "and if it continues will do considerable damage to the tender wheat roots. They need a big fall of snow to protect them right now."

L. B. Naylor, car account of the El Reno division, was here yesterday at the Rock Island.

H. E. McMullen, trainmaster on the local division of the Rock Island, was a business visitor here yesterday.

E. Kelly, local foreman of equipment at the Rock Island yards, went to Dalhart, Texas, yesterday on business connected with the road equipment.

R. J. Hamilton of the Hulse Architect company, returned yesterday from Garfield where he was supervising the construction of the new high school building, now in course of construction there.

The Hulse Architect company has received a commission for the building of a new \$30,000 high school at Clayton, New Mexico. This information was received yesterday by W. E. Hulse after he had arrived here from Fort Madison, Iowa, where he was on business for his firm.

E. W. Engler, of 615 First Avenue east, left yesterday for Billings, Okla., where he has some oil interests. Mr. Engler is on the best known oil men in Reno county and has shares in several Kansas oil wells.

Ward Hunter, formerly car record clerk with the Anthony & Northern line is now in a similar position with the K. C. S. R. R.

E. J. Kreibel has been promoted to the position formerly occupied by W. Hunter, and has assumed the duties of car record clerk for the A. & N. road.

J. E. Allison, claim adjuster for the Santa Fe local division, with offices at Dodge City, was in the city yesterday on official business.

William L. Holly, who was formerly a member of the U. S. army recruiting party at the Hutchinson station, has been ordered to return here from Dodge City and take permanent station at this place.

Corporal John J. Dunlap, U. S. army recruiting service, returned to his proper station here yesterday.

E. A. Griffith of 317 Eleventh avenue east, who has been residing in the city since he made his home with his daughter, Mrs. E. D. Wilson, went to Galva yesterday to visit his old home there, on business.

W. C. Wilson, of 726 Sixth avenue east, who had been visiting with friends and relatives in various parts of Texas, returned home yesterday.

Fred W. Houston of Spearville, en-recruiting office and was sent to Fort Logan, Colo., from which point he will be sent to an infantry regiment. (copied as printed. rf)

Captain E. A. Sirmyer, U. S. army, in command of the Wichita recruiting district, inspected the local office yesterday. Captain Sirmyer also inspected the office at Dodge City.

Mrs. Sarah Coots of Avenue E east, who had been operated on at a local hospital several days ago, and whose condition at that time was considered serious, is now entirely recovered and has returned home.

George Hoskinson, Jr., son of George Hoskinson of Valley township, was operated on yesterday at the Methodist hospital and was reported as being improved, later in the day. The operation was successful.

The several departments of the Gazette having sampled a box of apples furnished by the Planters company unhesitatingly pronounce the Reno product the finest they have ever tasted and ___ well they are gone.

Ninety per cent of the householders of this city own or rent enough ground to make a kitchen garden. The recent experience due to the scarcity and high cost should be an incentive to every such owner or renter to plant every foot of ground available with vegetables. Seed may be purchased at small cost. The result is worth the trouble.

Stafford Couple Married

The parlors of the Chalmers hotel were the scene of a wedding last evening when Dr. J. G. Tretbar of Stafford was married to Miss Valeda Edith Downing of the same place.

2006 MEMBERSHIP LIST

ALLEN CO PUBLIC LIBRARY	P O BOX 2270	FT. WAYNE IN 46801-2270
ASHENS, MRS. FRANK	100 W 18th AVE	HUTCHINSON KS 67502-4130
BACH, CYNTHIA	P O BOX 54	JETMORE KS 67854-0054
BAIRD, ELEANOR	1412-B N Washington	HUTCHINSON KS 67501-4067
BASGALL, ROBERT & SHIRLEY	1509 MARLAND	HUTCHINSON KS 67501-5630
BROWN, CLINT & MARILYN	2707 N MADISON	HUTCHINSON KS 67502-3445
BURGESS, DUDLEY & KAREN	1314 E 20th, #B	HUTCHINSON KS 67502-5062
BURGESS, KEITH & MARTHA	3915 E 95TH ST	HUTCHINSON KS 67502-9023
CANFIELD, CHERYL	901 N MAIN	HUTCHINSON KS 67501-4401
CHESKY, EDWARD	3176 UPLAND TERR NW	WASHINGTON D C 20015-2320
CHILDS, MARGARET	3713-B ASBURY CT	HUTCHINSON KS 67502-2261
COLDWATER, ELIZABETH	P O BOX 39	CHASE KS 67524-0036
COLE, MEREDITH & DONNA	600 16th TERR	HUTCHINSON KS 67501-5843
COOK, WELDON & JOLENE	17 TRUMAN DR	SO HUTCHINSON KS 67505-1701
DALE, DORIS	829 E 1ST APT A	HUTCHINSON KS 67501-
DANKANYIN, JOHN & KATHLEEN	103 W 14TH	HUTCHINSON KS 67502-9023
DAR LIBRARY-MEM. CONT.	1776 D ST NW	WASHINGTON DC 20006-5353
DREWS, WILLIAM	3111 FARMINGTON RD	HUTCHINSON KS 67502-2439
EILERTS, ARLESS	1436 SCARBOROUGH LN	PLANO TX 75075-
FILBERT, ED & RUTH	1519 WILLOW RD	HUTCHINSON KS 67502-2613
GEN SOC OF UTAH	50 E N TEMPLE ST RM 599	SALT LAKE CITY UT 84150-3400
GOBIN, DWAYNE & VIVIAN	826 GRANT ST	HUTCHINSON KS 67501-3228
GOHEEN, ESTHER	305B HEMLOCK	HUTCHINSON KS 67502-
GRIGGS, KENDALL	3912 MISSION DR	HUTCHINSON KS 67502-8760
HATTON, REBECCA SUE	731 E 6TH AVE	HUTCHINSON KS 67501-2215
HAYES, HAZEL	2806 INDEPENDENCE RD	HUTCHINSON KS 67502-8453
HEAD, REBECCA	P O BOX 338	NICKERSON KS 67561-0338
HENDERSHOT, WINNIE	806 MEADOW LN	SO HUTCHINSON KS 67505-1725
HENDRIXSON, VERNE L	825 N WEST ST	BUHLER KS 67522-0028
HERMSTEIN, MARGARET	P O BOX 263	HESSTON KS 67062-
HORTON, VICKI	P O BOX 126	NICKERSON KS 67561-0126
JOHNSTON, BILL & MARILYN	1120 S POPLAR	HUTCHINSON KS 67501-
KLEIBER, MRS. IRENE	410 E 13TH AVE	HUTCHINSON KS 67502-5559
LAMBERT, ANN	2132 PHEASANT LN	SALINA KS 67401-
LEWIS, DIANE	13624 SE HARRISON CT	PORTLAND OR 97233-2022
LINGG, RITA	2514 E 43RD	HUTCHINSON KS 67502-1606
LONGHOFFER, GARLAND & JO	305 CRESCENT BLVD	HUTCHINSON KS 67502-5511
MARTIN, ROBERT & MARY	P O BOX 2244	YAKIMA WA 98907-2244
MARTIN, WAYLAND & DARLENE	4858 RHONDA LN	LIVERMORE CA 94550-8519
McALLISTER, PAM	10 N KENT ST	NICKERSON KS 67561-9046
McGONIGLE, ZOLA	904 WYOMING AVE	HUTCHINSON KS 67502-5108
McLAUGHLIN, RUTH	1611 CAREY BLVD	HUTCHINSON KS 67501-3932
McMANNIS, DARREN J	P O BOX 387	NORTH NEWTON KS 67117
MEADOWS, MYREL & MARGARET	2504 NEVADA ST	HUTCHINSON KS 67502-4347
MEYER, PATRICIA J	4065 FIVE MILE DR	STOCKTON CA 95219-3204

MID CONTINENT PUBLIC LIB.	15616 E 24 HWY	INDEPENDENCE MO 64050-2098
MOORE, CLAUDE & DELORES	1902 WESBROOK DR	HUTCHINSON KS 67502-2620
MOORE, ED & LOIS	303 CURTIS	HUTCHINSON KS 67502-2423
MOORMAN, EDITH	PO BOX 123	NICKERSON KS 67561-0123
NEWTON, MS. BERT	3320 NORMANDY RD	HUTCHINSON KS 67502-2954
NICHOLS, LEWIS & JOYCE	648 KIMBRO DR	BATON ROUGE LA 70808-6040
NICHOLS, NORMA	3 WARREN DR	SO HUTCHINSON KS 67505-2001
O'BRIEN, BRIAN & SHERRY	421 WILLIAMS	HUTCHINSON KS 67502-3913
PETERS, KEITH	714 E 56th AVE	HUTCHINSON KS 67502-8719
PHILLIPS, DON & DORIS	1508 W 17TH AVE	HUTCHINSON KS 67502-2607
PHILLIPS, DUANE & ALICE	10404 N WILSON RD	HUTCHINSON KS 67502-9544
PIPER, MRS. BARBARA	3710 ASBURY DR #A	HUTCHINSON KS 67502-2260
PRIGMORE, ERMA J	419 S BELL	LYONS KS 67554-3334
REES, COLLEEN G	9341 HUNTERS CREE DR	DALLAS TX 75243-6106
REITER, LESTER & KAY	2703 WESTMINISTER DR	HUTCHINSON KS 67502-2555
REXROAD, WM D	300 CRESCENT BLVD	HUTCHINSON KS 67502-5512
RITCHA, BILL & JANET	P O BOX 285	GENESEO KS 67444-0285
RILEY, ELIZABETH	229 E FOREST	SO HUTCHINSON KS 67505-2027
RUSSELL, MARGARET	P O BOX 276	NICKERSON KS 67561-0276
SCHUESSLER, CONNIE	214 SW HILLSIDE DR	TOPEKA KS 66611-1135
SIMMONS, VIVIAN L	1209-A W 24TH	HUTCHINSON KS 67502-3319
SNYDER, MARGERY	1403 W 4TH	HUTCHINSON KS 67501-1254
SOLIDA, BETTY J	811-B OLD FARM ESTATES DR	HUTCHINSON KS 67502-3347
STANSEL, LYNN & PAMALA	429 W 13th	HUTCHINSON KS 67501-4540
STEELE BOB & BETTY	1202-A W 24TH AVE	HUTCHINSON KS 67502-3342
STEVENS, MARIE	304 E 6th	HUTCHINSON KS 67501-1408
STOECKLEIN, JIM	610 CATALINA DR	HUTCHINSON KS 67502-8456
STOFER, LLOYD & EVELYN	15—29th CT	HUTCHINSON KS 67502-2417
STREETER, LYDIA	814 E 30TH AVE APT 114	HUTCHINSON KS 67502-4347
TAGGART, BILL & DONA	417 E 17TH AVE	HUTCHINSON KS 67502-5574
TETER, BARBARA	1606 HILLROSE PL	FAIRBORN OH 45324-4017
TUCKER, ROBERT	2550 EGRET FLIGHT CT	PARK CITY KS 67219-1733
WALCEK, EMIL & JANICE	760 GABLE RIDGE RD	ROSWELL GA 30076-1110
WALL, BARRY & GALE	1510 W 22ND AVE	HUTCHINSON KS 67502-2621
WEDMAN, SANDRA M.	15 S REFORMATORY	HUTCHINSON KS 67501-3075
WHITEMAN, LILLIE	P O BOX 126	LYONS KS 67554-0126
WILKE, MARGARET	13736 CHEROKEE TRAIL	MIDDLEBURG HTS OH 44130-6840
WISCONSIN HIST. SOC. LIB. 816 STATE ST		MADISON WI 53706-6840

NOTE: PLEASE LET THE MEMBERSHIP CHAIRMAN AND/OR QUARTERLY EDITOR OF ANY ADDRESS OR NAME CHANGES.

**News from the
Kansas State Historical Society
by Sara Keckeisen**

Spring 2006

After a very healthy hiatus, the editor of the *Kansas Review* has graciously invited the Kansas State Historical Society to return with a quarterly news update, to let you know about fresh additions to our collections, pass on news and ideas from the world of genealogical research, and just let you know in general what is happening at YOUR state historical society!

This month will be devoted to introductions. For those of you who have been readers of the *Kansas Review* previous to 2002, you will remember that this column was written by Jane Kelsey, long-time Family History/Genealogy librarian at the Kansas State Historical Society. That year, seeking fresh professional challenges, Jane accepted the job of Government Documents librarian here at the Society. I was hired to take her place in the spring of 2002. I have an undergraduate degree in history from the University of Wisconsin—Eau Claire and a Masters in Library Science from the University of Denver. I had previously worked for the Kansas State Historical Society for eleven years—as Government Documents librarian! I was gone from our fold for thirteen years while I got my children raised enough to be able to take care of themselves (meanwhile keeping my hand in the book business by working part-time at Waldenbooks then as trade books manager at the Washburn University bookstore, both in Topeka). The Family History librarian position became available just as I was ready to go back to work full-time, I applied for the job, and was fortunate enough to be hired. So Jane and I essentially traded jobs! For the last four years, I have been enjoying myself immensely and learning so much. My schedule is such that three mornings a week, I help staff the Reference Desk helping to answer genealogical and historical research questions from our patrons, whether in person or by phone, mail, or email. Although we are not staffed to do in-depth research for anyone, if you have *specific* questions to ask, don't hesitate to write to us at reference@kshs.org or by mail to Reference, Kansas State Historical Society, 6425 SW 6th Ave., Topeka, KS 66615. Bear in mind that any research we do, other than checking indexes or the library catalogs, requires the prepayment of a \$15.00 research fee. For more information check www.kshs.org, write to us at the address above, or call us at 785-272-8681, ext. 117.

As I said, I intend this column to be a means of highlighting new books or collections we acquire, to pass on any research tips I can, and hopefully to answer any questions

or concerns you may have about our facilities or procedures. To that end, I would invite your comments, questions or suggestions for discussion topics. Please feel free to contact me at skeckeisen@kshs.org if there are topics you are particularly interested in. Chances are, if you are interested in something or have a question about something, there are many other folks out there who feel the same.

This month, I'll take time for just a couple announcements. We have recently borrowed for microfilming, from the Topeka Genealogical Society, the original copies of the Shawnee County Marriage License Applications that they had rescued several years ago (literally, as I understand it) from the dumpster at the Shawnee County Courthouse! This is not a complete set of the marriage license applications (many names are missing and the time period covered is the mid-1880s to 1911) and the information contained in the license applications is essentially the same as that contained on the licenses themselves—*except*, if either of the applicants was underage, the application was accompanied by a written letter of permission from a parent or guardian. This information can be *very* interesting for the genealogist. The applications have not been filmed yet—the collection is still being processed to get it ready for filming—but the records have been arranged in alphabetical order. If you are interested in seeing if a copy of a Shawnee County marriage license application exists for your ancestor, contact us and we can check.

County plat books can be very interesting for determining where in a county your ancestors may have owned land. The KSHS has a good collection of such plat books. These sources are all microfilmed, so they are available to look at not only at the Research Center, but the films are available on Interlibrary Loan, so you can look at them at your home library. A list of the plat books we have, by county and date, is available for you to look at, at: <http://www.kshs.org/research/collections/documents/maps/countyatlases.htm> If you don't have internet access, let me know and we can send you a paper copy of the list.

If you are hooked up to the internet, you may also subscribe to the Kansas State Historical Society's e-newsletter, which will regularly update you to events going on here in Topeka and at our several historic sites. In addition, coupons and special offers are frequently included! You can sign up for FREE at: http://www.kshs.org/kshs_news/email_form.htm

That's all for this quarter. Let me know what you would like to hear about in this column.

Sara J. Keckeisen
Family History Librarian

Aelmore	66	Clark	66, 76	Fesler	65, 66
Alexander	66	Clopton	68	Filbert	61, 80
Algrim	65	Cole	67	Fischer	69
Allison	77	Colladay	75	Fishburn	65
Anderson	68	Collins	65	Forker	67, 69
Ankerholz	69	Compton	64	Friesen	67
Arbuckle	66	Cook	68	Frisch	70
Aspey	75	Cool	76	Gabrielson	76
Asrhman	70	Cooper	70	Galle	67
Ausherman	68	Coots	77	Galloway	75, 76
Ayers	65, 67	Cost	76	Gano	74
Bachus	65	Cowan	70	Gantz	67
Baer	76	Cox	65	Garten	67
Baker	64	Crick	76	Gaughman	74
Ball	65	Crosson	69	Givens	65
Ballard	68	Crow	67	Glazier	75
Barnes	67	Crupper	65	Glendall	74
Barton	67	Curtis	65	Glotfelty	64
Bates	76	Dale	69	Goatley	65
Bauman	68	Dannenfeiser	68	Goodrich	67
Bechtel	68	Davidson	65	Graber	67
Beltz	65	Davis	65, 74	Graves	76
Bereman	68	Dawson	70	Green	67
Best	67	DeBartello	80	Griffin	68, 77
Binford	68	Deck	67	Gudgell	67
Biound	76	Dellenbach	65	Guhl	65, 76
Birket	65	Delter	70	Guyer	67
Boes	76	Denton	66	Haas	66, 67
Boggs	66	Detter	66, 68	Hadley	65
Bontrager	66	Diener	66	Hagedorn	62
Bookless	70	Dimmitt	65	Haggerman	76
Boone	76	Downing	77	Haines	76
Borgelt	76	Drolte	66	Hall	68, 75
Boyd	65, 66	Dukelow	68	Hamilton	77
Bozeman	66	Duncan	70	Hanes	66
Bradbridge	76	Dunlap	77	Hansen	65
Bradshaw	66	Dunn	67	Harper	76
Breneman	67	Duvall	66	Harris	68
Bridgeman	65	Earl	66, 70	Hart	65
Brock	74	Eastman	61	Hastings	76
Brown	64, 67, 76	Ehling	67	Hattan	80
Brownlee	65, 67	Einspahr	66	Hayes	75, 76
Buller	66	Ellis	71	Haymond	67
Burford	65	Ellsworth	75	Heidebrecht	65
Burge	75	Elmore	66	Hemphill	70
Burgess	61, 80	Engle	74	Hendershot	69
Bush	66	Engler	77	Henderson	62
Butler	68	Estey	76	Hermstein	69
Buxton	70	Fair	70, 76	Hensley	65
Caldwell	74, 76	Faris	75	Henson	70
Canning	76	Farrell	74	Hess	68
Carmack	80	Feese	67	Hettinger	69
Carpenter	65	Feller	74	Hiebert	66
Carr	76	Fernpotto	67	Hiett	65
Caskey	76	Ferris	67	Hill	67, 68, 69, 76

Hipp	68	Lankford	76	Nelson	76
Hipple	76	Laughlin	68	Newcom	66, 67, 68
Hirst	65, 67	Lauver	66	Noel	66
Hitchcock	69, 76	Lawellin	67	Norris	67, 74
Hogan	69	Lawrence	66	Notestine	67
Holaday	74	Layman	70	O'Halloran	66
Holly	77	Laymon	68	O'Hara	65
Holmes	67	Lee	67	Oliver	65
Holthoefer	67	Leigh	69	Pankratz	68
Hornbaker	67	Leikeman	68	Parker	68
Hosey	66	Lingg	80	Pate	66
Hoskinson	77	Linscheid	67	Pauls	66
Houston	77	Little	67	Petersen	76
Howard	70	Lochridge	75	Pettit	76
Huckstep	76	Loeppke	66	Polson	71
Hudson	75	Long	66	Popp	66
Hulse	77	Lowrie	75	Poulton	67
Hunter	65, 67, 77	Lubbers	65	Powers	67
Hyter	69	Lyman	65	Ratzlaff	65, 68
Ingle	69	Lyson	70	Ravencroft	76
Irvine	68	Marion	76	Ray	76
Jenkins	68	Martin	65	Rayl	70
Jimmerman	70	Martindell	76	Reamer	67
Johnson	68	Massow	66	Reed	67, 74, 76
Johnston	68	Matthies	66	Regier	65, 68
Jones	68, 68	McCarroll	69	Reig	76
Joslin	68	McClelland	68	Resner	66
Justice	70	McCubbin	66	Rexroad	80
Kaufman	68	McDill	66	Richardson	67
Kautzer	66	McFarland	65	Richhart	68
Keckenstein		McFarland	76	Rickers	67
Keeler	68	McIver	68	Rishel	76
Kellerman	65	McKinney	76	Robb	76
Kelly	77	McKinstry	76	Romer	76
Kepner	70	McKissick	66	Rospaw	76
Kiblinger	71	McMillin	69	Ross	67
Kiebert	68	McMullen	77	Rosser	76
Kim	66	McMurry	65	Ruddy	63
Kinast	66	McRill	67	Russom	66
King	68, 69, 75	Mead	76	Sage	75
Kinney	75	Millard	67	Sallee	68
Kittle	70	Miller	65, 67, 68, 80, 74	Scales	75
Knoefel	65	Milliken	67	Schmidt	66, 68, 74
Knorp	67	Montgomery	63, 75	Schmucker	67
Knox	76	Moore	67, 75	Schrock	66
Koestel	67	Moorman	68	Scott	75
Koontz	65, 70	Morgan	63	Seachris	74
Kranz	68	Mothes	67	Seaton	65
Krehbiel	65, 66	Mueller	66	Seelinger	67
Kreibel	77	Mullen	74, 76	Seideman	68
Kreie	65	Mundell	68, 70	Shardein	70
Kroker	70	Muns	76	Sharp	68, 74
LaGree	76	Murray	65	Shaw	76
Landis	74	Nace	67	Shelton	65
Langille	75	Naylor	76	Sheperd	76

Shive	68	Webb	76
Shoop	67	Wedel	66
Showalter	65	Wedman	61, 80
Shuff	68	Welch	75, 76
Shull	65	Weniger	67
Shultz	64, 70	West	76
Shumway	68	Wiley	68
Sifers	74, 75	Williams	65, 69
Sinclair	74	Wilson	65, 77
Sipes	68	Winchester	75
Sirmyer	77	Witte	67
Sloan	76	Witter	66
Sluder	76	Woodford	75
Slutter	76	Woods	66
Smiley	66, 67	Woolsey	65
Smith	67, 76	Wright	75, 76
Snodgrass	70	Wyman	66
Spaulding	67	Yaggy	76
Stallman	76	Yardley	65
Stange	70	Yoder	65
Stecher	66	Zimmerman	68
Stewart	65, 69, 75	Zwiebel	68
Stoecklein	80		
Stoffer	65		
Stone	76		
Strawn	70		
Stroud	67		
Stutzman	67		
Sweeney	66		
Sweet	76		
Sweetser	76		
Symns	65, 69		
Terrill	67		
Thayer	66		
Thiessen	66		
Thompson	65, 71		
Tipton	75		
Todd	66		
Tretbar	77		
Tucker	65		
Tyler	74		
Unruh	66, 68		
Utterback	65		
VanEman	76		
Vinson	66		
Voran	68		
Waggoner	76		
Wagler	65		
Wainner	70		
Waits	66		
Wall	61, 63, 64, 70, 71, 80		
Walters	69		
Warren	80		
Washburn	68		
Watts	67		

RENO COUNTY GENEALOGICAL SOCIETY PUBLICATIONS FOR SALE

CEMETERY RECORDS OF RENO COUNTY Burials from 1860's through 1978.	\$23.00
EARLY MARRIAGE RECORDS OF RENO COUNTY 1872-1913	\$23.00
1880 CENSUS RENO COUNTY, KANSAS	\$17.00
GRAVES IN NORTH INMAN CEMETERY Superior Township, McPherson County, Kansas.	\$ 7.00
RECORDED DEATHS OF RENO COUNTY 1890-1911 + INDEX, 4 Volumes	\$17.00
RECORDED EARLY BIRTHS OF RENO COUNTY, KANSAS 1890-1911 + INDEX	\$17.00
INDEX TO NATURALIZATION RECORDS OF RENO COUNTY, KS Name index of citizens who filed at the Reno County Courthouse, 1875-1955.	\$12.50
RECORDED HOMESTEAD RECORDS OF RENO COUNTY, KS 1875-1945 Name, location and file date, 1875-1945.	\$21.50
TEACHERS OF RENO COUNTY 1884-1966 Early teachers of Reno County. Color map of school districts included.	\$27.50

**All Prices include postage and handling. Kansas residents add 7.05% sales tax.
Mail orders to: RCGS, P. O. Box 5, Hutchinson, Kansas 67504-0005**

**RENO COUNTY GENEALOGICAL SOCIETY
P O BOX 5
HUTCHINSON KS 67504-0005**

RETURN SERVICE REQUESTED



MCMANNIS, DARREN J
P O BOX 387
NORTH NEWTON KS 67117