



THE SUNFLOWER

VOLUME XI, NUMBER 1 & 2

A Quarterly Publication

MAY-AUGUST 1989

. . . IN THIS ISSUE

- 4 Map of Lerado, KS
- 5 Southwest Corner of Reno County, KS
- 5,8-10 Forgotten Towns of Southwest Reno County
- 6 Map of Olcott, KS
- 7 Map of Bell Township
- 11 Clippings from The Lerado Ledger
- 12 Map of Grove Township
- 13 Map of Loda Township
- 14-17 Medora & Medora Junction, KS
- 18 Railroad Map of Reno County
- 20 Hutchinson Facts

OFFICERS FOR 1989-90

<u>President</u>	
Karen (POULTON) BURGESS	662-6106
<u>Vice-President</u>	
Ruth (HAIR) FILBERT	663-2804
<u>Recording Secretary</u>	
Pam (THOMPSON) STANSEL	663-8678
Barbara (HAMBY) MURPHY	662-8549
<u>Corresponding Secretary</u>	
Edgar GROVER	669-9485
<u>Treasurer</u>	
Roy GARDNER	662-8192
<u>Immediate Past President</u>	
Lawrence J. COX	662-8192

STANDING COMMITTEE CHAIRPERSONS

<u>Consultant</u>	
Malinda (CROTTS) PETERSON	663-3453
<u>Education and Speakers Bureau</u>	
Ruth (HAIR) FILBERT	663-2804
<u>Historian</u>	
Harriet (HELMICK) CUSHING	662-0738
<u>Librarian</u>	
Lydia (HEWITT) STREETER	662-1103
<u>Membership</u>	
Winnie (BROCK) HENDERSHOT	662-6509
<u>Obituary File</u>	
Alta (ENGLER) PROCTOR	665-5966
Delores (EHLI) MOORE	662-9455
<u>Program</u>	
Ruth (HAIR) FILBERT	663-2804
<u>Publicity</u>	
Barbara (HAMBY) MURPHY	662-8549
<u>Quarterly Editors</u>	
Pam (THOMPSON) STANSEL	663-8678
Ruth (HAIR) FILBERT	663-2804
<u>Research</u>	
Arlene VINCENT	662-8693
<u>Sales (forms) & Ways and Means</u>	
Lynn and Pam STANSEL	663-8678
<u>Special Account Treasurer</u>	
Roy GARDNER	662-8192
<u>Surname File</u>	
Carrolyn (BURDETTE) MILLER	669-9757
<u>Who's New</u>	
Opal (MATLACK) CULVER	665-6204
Bea (GROSS) STANSEL	662-5737

 Meeting Place:
 Hutchinson Public Library
 901 N. Main Street
 Hutchinson, KS 67501 663-5441

PRESIDENT'S MESSAGE

I would like to introduce myself for those who haven't been able to make the meeting since last April. I'm Karen Burgess, I've been a member since 1984. For the last few months I had the privilege of serving as President. It's really been a learning experience, but one that I've enjoyed. I was born and have lived most of my life in the Medora-Hutchinson area. My husband, Dudley and I have one son, Darin. I really enjoy doing genealogy and know that it will be a lifetime hobby for me. I've recently purchased a computer so this coming year I plan on being very busy. I also help at the local LDS Family History Center on Wednesday mornings. Come by and see me and take a look at what the Center has to offer.

At this time I want to thank all the people that have helped me and have served on committees. A special thanks to our vice-president, Ruth Filbert, without her I would have been completely lost. And, I really appreciate the effort the new editors are doing in getting THE SUNFLOWER up to date. Also, I wish to thank all the members for staying with us during this last year. We need you all! KPB Feb 1990

RENO COUNTY GENEALOGICAL SOCIETY

The Reno County Genealogical Society of Hutchinson, Kansas, was founded in 1978 for the purpose of fostering genealogical research, promoting the exchange of information and encouraging the deposit of genealogical and historical materials in established libraries and archives.

Membership in the Reno County Genealogical Society is open to anyone interested in genealogy. Dues are \$10 per year per family, as of 1 April 1989. All dues are paid at once for the period of 1 April 1989 to 31 March 1990.

Donations and gifts to the society are tax deductible. Meetings are held on the third Monday of each month (except December) in the auditorium of the Hutchinson Public Library, Ninth and Main, 7-9 p.m.

NEW U.S. RESEARCH MATERIALS

Periodical Source Index (PERSI)

The Periodical Source Index is a subject index to thousands of articles in genealogical periodicals. Using PERSI can save you many hours of searching through unindexed periodicals. The index is published by the Allen County (IN) Public Library Foundation as a joint effort with the Genealogical Department of the Allen County Public Library. The microfiche is available at the Hutchinson Family History Center.

PERSI has these features:

- *Indexes 1,700 English and French language genealogical periodicals.

- *Provides subject access to about 500,000 articles.

- *Includes separate indexes to articles on families, localities and research methodology.

THE INDEX DOES NOT:

- *Index every name in an article.

- *Include queries, book reviews, ancestor charts, or family charts.

- *Include family surname magazines or newsletters.

- *Include the actual article.

- *include page numbers for the articles.

The PERIODICAL SOURCE INDEX has a retrospective index (covering articles in journals dated from 1847 - 1985) and annual indexes (for periodicals dated 1986 and later). The retrospective index is not yet complete, but it presently indexes about 200 of the most popular genealogical periodicals.

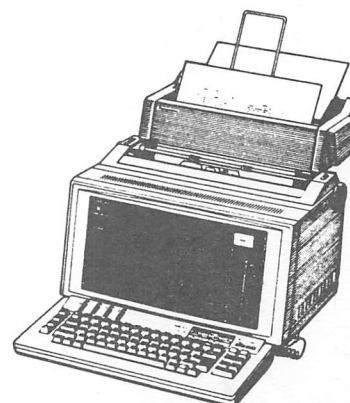
Both indexes have been received by the Hutchinson Family History Center. Ask for microfiche set #6016863 for the retrospective index and #6016864 for the annual section (1986 and later).

To obtain copies of articles listed in the PERSI INDEX, patrons may contact the Allen Public Library. All of the periodicals indexed in PERSI are available at that library, and patrons may order photocopies. Patrons should send a letter describing the articles they want copied, providing the full entry from PERSI and the name of articles in each letter, generally not more than five to eight articles. They will be billed a \$3.00 fee for each letter plus \$.20 per page copied. They should not make requests by telephone or fax machine. The address of the library is: Allen County Public Library, P.O. Box 2270, Ft. Wayne, IN 46801.

GENEALOGICAL WORD LIST

The Family History Library has begun publishing a new series of genealogical word lists. First off the press is the Dutch list, which gives Dutch words with English translations.

It lists approximately 900 words that you are likely to find in Dutch genealogical sources, including general words, numbers, dates and times. It also describes the characteristics of the language and suggests sources for further help. Danish, German, Norwegian, and Swedish word lists will be available later in 1990. All lists will be available in family history centers.



As one of the editors of **THE SUNFLOWER**, I would like to thank the society for purchasing a word processor. I have really enjoyed learning how to use this machine. I work on the word processor every chance I get. It gets a little discouraging when I erase something I wanted to save, but I think I am getting the hang of it now.

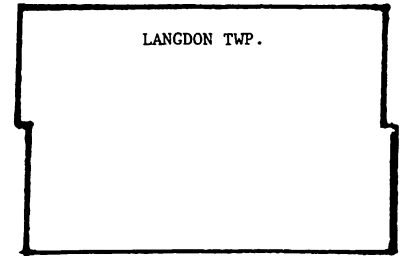
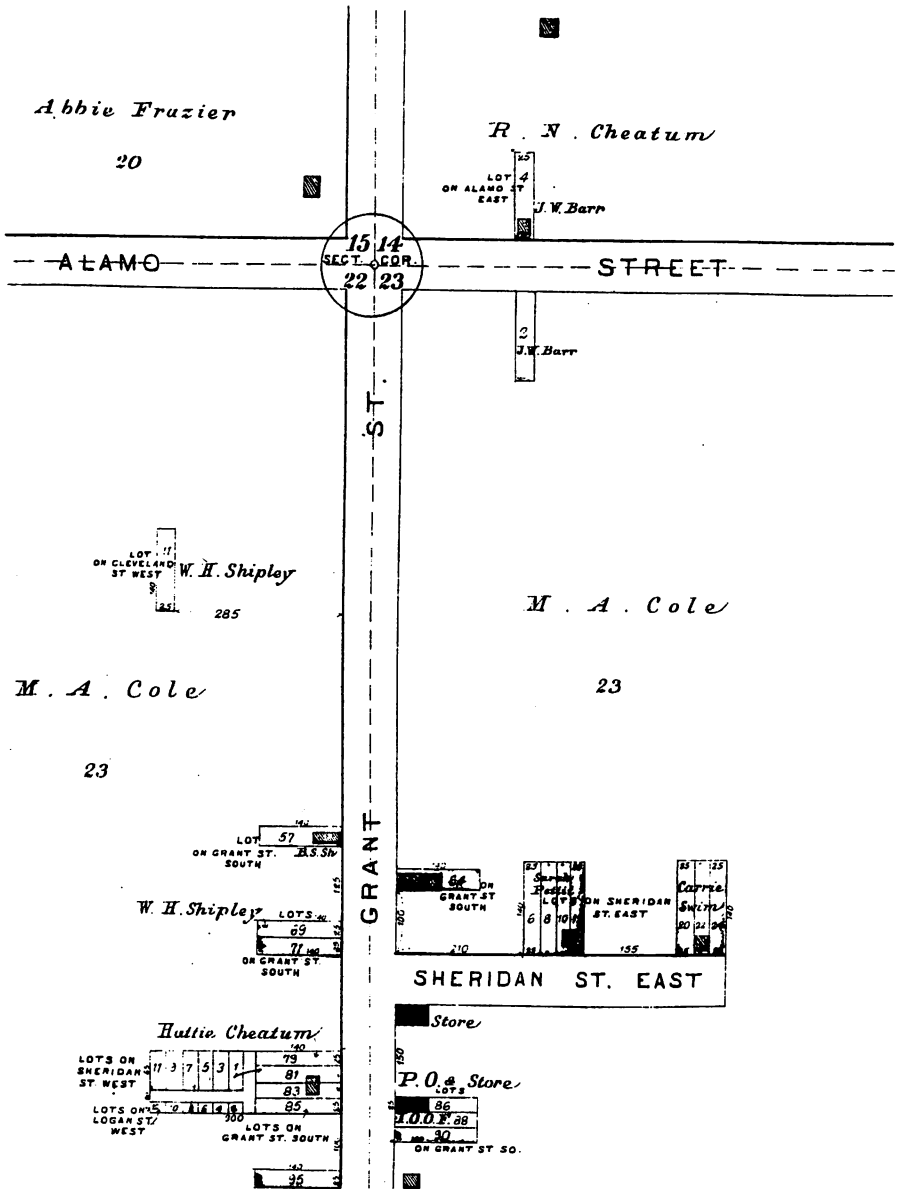
This machine will make my job so much easier and faster. I will no longer have to type everything twice to get the right margins even. We will be able to do articles in advance and save them on discs, then print them out as we need them. Ruth FILBERT and I hope to be caught up with all the back issues of the quarterly by the end of May. Please bear with us while we catch up.

If anyone has suggestions or comments about **THE SUNFLOWER** please contact Ruth or me. Pam STANSEL

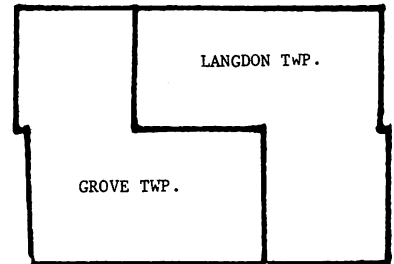
LERADO

LOCATED IN BELL TWP.

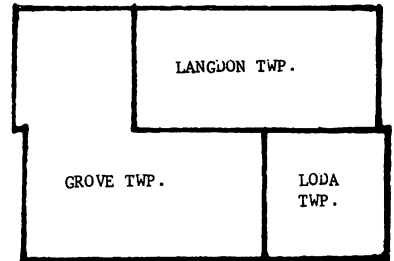
Scale 200 feet to 1 inch



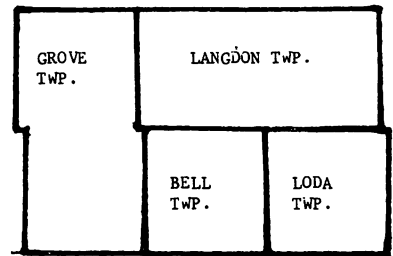
1874



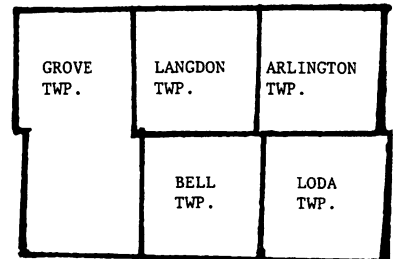
1876



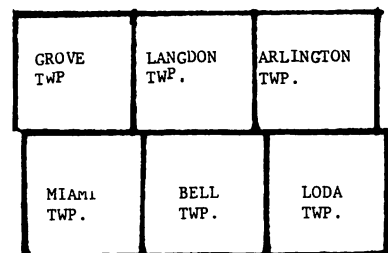
1877



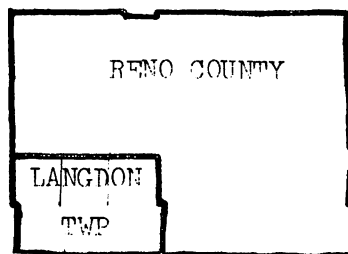
1878



1881



1894



The articles pertaining to Langdon Township and it's growth were compiled and written by Ruth (HAIR) FILBERT.

**The Southwest Corner
of Reno County, KS**

LANGDON

Langdon township was organized March 24, 1874. It covered the southwest corner of Reno County, KS and contained the present townships of Langdon, Grove, Miami, Bell, Loda and Arlington. See: **THE SUNFLOWER** VOLUME VII No. 1 Feb. 1985 for the Plat map of Langdon 1902.

The first Trustee of Langdon was J. J. Ulner; Clerk, G. W. Brown; Treasurer, J. Elliot; Justice of Peace, W. H. Collins; Constable, Isaac Jordan.

GROVE TOWNSHIP

In 1876, Grove township was formed out of the section of Langdon township which now consists of Grove, Miami and Bell townships. See: VOLUME IX No. 4 Grove Twp. Directory. The 1st Trustee was W. J. Van Eman; Clerk, E. H. Meyers; Treasurer, J. H. Hickman; Constables, R. O. Van Eman and C. L. Ely; Justice of Peace, Noah Bellew.

LODA TOWNSHIP

The 3rd of July in 1877 a petition was filed to form Loda township by cutting Township 26 Range 8 from Langdon township.

First election results were Trustee, W. H. Warner; Clerk, J. C. Laymon; Treasurer, W. A. Watkins; Justice of Peace, Wm. Potter; Constable, J. M. Jones.

BELL TOWNSHIP

Bell township was founded October 7, 1878. It was formed from the southeast corner of Grove township. Bell township was named after Mrs. W. J. (Isabelle) Van Eman. Mr. Van Eman filed a homestead claim on the S E $\frac{1}{4}$ of Section 6 and the timber claim on the N E $\frac{1}{4}$ of Section 7.

The first Trustee was Barnabas De Weese; Clerk, J. R. Brown; Treasurer, Joe Barnett; Constables, J. B. Eaton and C. E. Doty.

ARLINGTON TOWNSHIP

Arlington township was organized January 4, 1881, by Robert Burling. See: VOLUME IX, No. 3 of **THE SUNFLOWER** for a township map of Arlington and a story of the town of Arlington.

MAIMI TOWNSHIP

Miami township was one of the last townships to be organized. It was formed from the south half of Grove township October 1, 1894. See: VOLUME VII No. 3 for a map of Miami township and the "Early History of Turon, KS".

OSAGE INDIAN TRUST LAND

The Osage Indian Trust Land was a strip of land twenty miles wide extending from Fort Dodge in Ford County on the west to a point south of Fredonia on the east. This was land ceded to the Osage Indians for moving into Indian Territory.

Sections 25 through 36 inclusive or the southern two rows of sections in Bell township were in the Osage Reservation. This land could be purchased for \$1.25 per acre.

By January 1, 1876, all homestead and timber claims in Bell township were claimed. All that was left was the Osage Indian Trust Land.

FORGOTTEN TOWNS OF SOUTHWEST RENO CO.

OLCOTT

Olcott, a hamlet in Miami township, Reno County, is the terminal station on the Olcott & Iuka branch of the Missouri Pacific and also, on the main line of the same railroad in 1917. It is located 30 miles southwest of Hutchinson, the county seat, and 5 miles southeast of Turon. Olcott has telegraph and express offices. The Post Office was established the 6th of April 1887, when the Post Office in Dresden, Kingman Co., was moved to Olcott. It continued operating until 31 Dec. 1907 except for an interruption in service between 15 Jan. 1903 to 11 Mar. 1904. Mail was distributed by rural delivery from Turon after 1904. The population according to the U.S. 1910 Census was 53 residents. See: Olcott town plat map this issue and the Miami Twp. plat map VOLUME VII No. 3 page 30 **THE SUNFLOWER** for the location of Olcott.

OLCOTT

MIAMI TWP.

Scale - 200 Ft. to 1 inch.

School District No. 100

John E. Ferguson

W. H. Hillbrant

40

40

John Wilson

Hotel

Baptist Church

LOGAN

AVE.

Quarter Section 26-25 Corner

POST OFFICE & STORE

Anna E. Thornburg

Etta Cranor

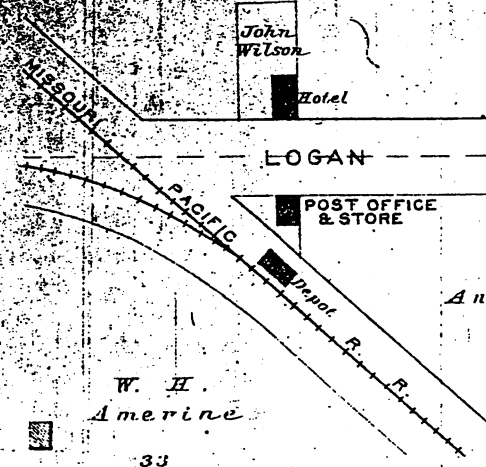
160

W. H. Amerine

33

7

MAIN ST.

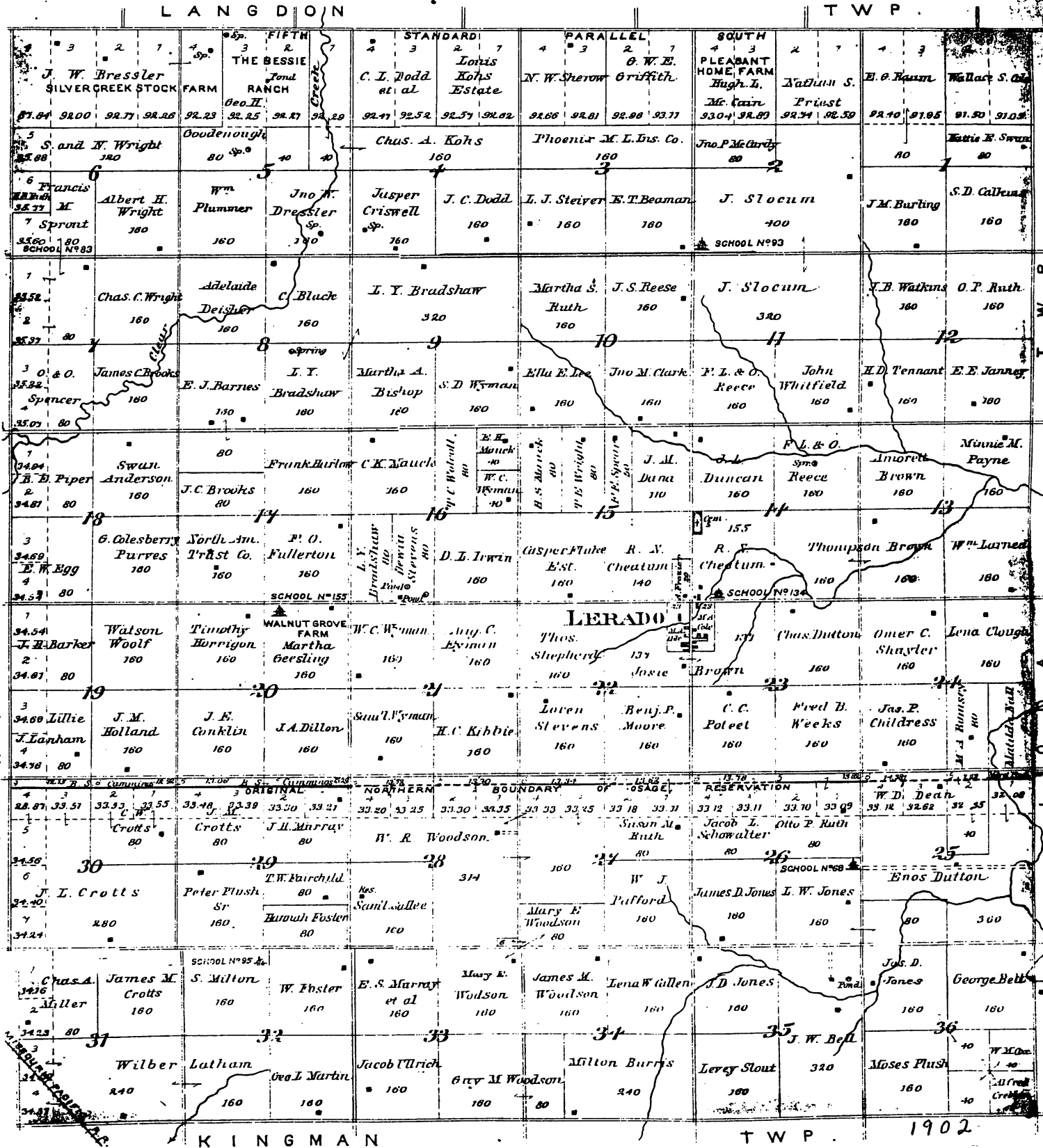


PLAT OF BELL

Scale 2 Inches to the Mile.

Township 26 South. Range 9 West.

of the 6th Principal Meridian.



SEGO

Sego, an inlet hamlet of Reno County in 1917 was located 18 miles southwest of Hutchinson, the county seat, and 7 miles from Arlington on the Missouri Pacific, the nearest railroad and shipping point. The Post Office was established 12 Oct. 1874, and discontinued 14 Jan. 1905. The 1910 U.S. Census listed 16 residents.

OCOEE

Ocoee - As near as I can locate Ocoee, it was in Section 29 of Township 26 Range 8 West. See: Map of Reno County, KS, 1880 in VOLUME X No. 2 page 16 **THE SUNFLOWER**.

BONE SPRINGS

Bone Springs, a rural hamlet of Reno County in 1917, is located on a tributary of the Ninnescah river, about 25 miles southwest of Hutchinson, the county seat. A Post Office was established October 12, 1874, and continued until November 29, 1902. The first postmaster was A. Kilmer. Later mail was supplied to the inhabitants by rural free delivery from Arlington.

JORDAN SPRINGS

Jordan Springs was located approximately two miles west and ½ mile south of Langdon in Langdon Township. Jordan Springs school would have been on the border of Grove Township. There was a Post Office listed for Jordan Springs between 18 Jan. 1875 and 19 Oct. 1887.

DESIRE

Desire - The Post Office was established 24 Jan. 1877 and continued until 23 Aug. 1878. (Could have been located close to the border of Section 25 & 26 in Arlington Township.

GEM

Gem - No Post Office listed. Gem was shown on the 1880, 1882 & 1884 maps of Reno County (VOLUME X No. 2 page 16 of **THE SUNFLOWER**). Possibly located in Section 2 Township 25 South Range 9 West of Langdon Township.

EDITORS NOTE: Do you have personal/family knowledge about the Forgotten Towns in the original Langdon Township? Any additions or corrections to this article are welcome.
Ruth

BELL TOWNSHIP

In 1873, settlers from Tennessee and Iowa began to file for homesteads in Township 26 Range 9 West of the 6th Principal Meridian. This township was later named Bell Township. Two settlements developed within a mile of each other: Neatherland and Buffalo.

NEATHERLAND

Sam Poteet's homestead on the southeast quarter of Section 22 (S E ¼ Section 22) served as a distribution point for mail brought by settlers from Hutchinson. The Post Office was named Neatherland after a small town in Tennessee, when it was established August 12, 1874. The first postmaster was J. F. "Frank" Martin. A. M. Webb became postmaster in April 1876. The post office was moved to Buffalo in 1878, but retained the name Neatherland.

BUFFALO

Joshua Jones homesteaded the N W ¼ Section 14 in 1873 and started a small store in his home. Other stores were started on the four corners. The small trading post was called Buffalo.

Early businessmen were: Dr. Wylie Brown, who was the first doctor and had a small drug store in his home. Dr. Brown had the Neatherland Post Office in his home after 29 April 1878 and was the third postmaster. Cal Ely and Andrew Gardenhire from Tennessee had a general store selling almost everything. Sam Mateer had a blacksmith shop. O. S. Jenks, from Wisconsin was a druggist. Frank and Will Jenks built a flour and grist mill powered by the wind. Wanda Oneal and her sister were dressmakers.

LERADO

Lerado was located in Bell township, thirty miles southwest of Hutchinson, KS. It was located on the town site of Neatherland. Neatherland Post Office was renamed Lerado May 2, 1884, and continued until February 13, 1904. Lerado was supposed to be spelled Laredo after Laredo, Texas, but when the papers to establish the post office were received the name was Lerado and it couldn't be changed.

Dr. John A. Brady, of Louisville, KY, bought 640 acres of land for the town site. One hundred and twenty acres were platted for the town site, street signs erected, and 20,000 catalpa trees were planted. Dr. Brady bought the N E $\frac{1}{4}$ of Section 22, which was the homestead of M. S. Ely, the N W $\frac{1}{4}$ Section 23 from Ab Webb, and the S W $\frac{1}{4}$ Section 14 and S E $\frac{1}{4}$ Section 15 from Frank Martin in Township 26 South, Range 9 West of the 6th Principal Meridian.

As early as 1884, it was thought that up to eight railroad companies would build railroads through Bell Township. The Chicago, Kansas and Nebraska (C.K.&N.), a part of the Rock Island, was to build southwest from Hutchinson and the Missouri Pacific northwest from Kingman. Other railroads interested in Bell Township were the Wichita and Rocky Mountain, Kansas Southwestern, the Wichita, Dodge City and Trinidad, the Denver, Memphis and Atlantic, and a branch of the Santa Fe. The Rock Island and the Missouri Pacific planned to cross at Lerado and it was sure to prosper.

Dr. Brady built a plant to make concrete blocks. The two-story bank, two-story Opera House and a shop for the Lerado Ledger were built by Dr. Brady of concrete blocks.

Lerado was the only city to advertise that it had a complete Water Works System. The standpipe for the windmill was on the southwest corner of the N E $\frac{1}{4}$ Section 23. A huge 40 foot windmill was to pump water into a holding tank. Six inch cast iron water mains would distribute the water.

This is a list of the different lines of business that could be found in Lerado.

Bank of Lerado - Dr. John A. Brady, President; James R. Colean, Cashier

Lerado Ledger - Frank A. Niblack & Leslie Niblack

Lerado Benton Brick Co. - Dr. John A. Brady

Restaurant - T. C. Howard

Drugs - Orlo S. Jenks

Groceries - W. I. King

Groceries - W. P. & L. W. Jones

Dry Goods & Clothing - Ely & Sons

Flour & Grist Mill - E. E. Jenks, Wm.

Jenks, Engineer

Contractor & Builder - George Krackenberger

Lumber Yard - Brown and Co. (T. A. Brown)

Hammel House (Hotel) - Henry Hammel

Harness & Saddles - Henry Pechin

Hardware - N. G. Robertson

Laundry - Martin & Douglas

Shoemaker - J. Brown

Bakery - Wm. Jones

Physicians - W. Brown, P. F. Janes, W. T. Wilkins

Meat Market - W. H. Cheatum

Barber - Richard Slack

Livery Barn - Thomas Yeo

Lawyer - L. M. Hall

Veterinary Surgeon - A. Voarhees

Real Estate - J. M. May, J. W. Kennedy

Painter - N. P. Pechin

Brick Masons - Manck & Sons (Eli & Elmer)

Carpenters - Geo. Krockenberger, Dave Fulk, W. L. Montgomery, Geo. Sleepy, Jack Shipley, Henry Geesling & Ed Nicols

City Dray - No. 1 Frank Brady

No. 2 John Martin

Mayor - Dr. John Brady

Clerk - R. A. Murray

Justice of Peace - J. B. May

THE LITERARY SOCIETY

The Lerado Literary Society held its first meeting January 21, 1887 with temporary officers in charge. W. P. Jones, Chairman and W. H. Burkholder, Secretary. Officers elected were: N. G. Robertson, President; Ira Bullard, Vice President; W. H. Burkholder, Secretary; W. P. Jones, Treasurer; G. W. Ely, Sergeant of Arms. Miss Edna Brown, Editress.

The End of a Vision

Dr. Brady's dream never came true because he refused to give in to the demands made by the railroads for free land and a part of the town companies holdings. The Rock Island was built, but instead of going straight southwest from Hutchinson a sharp turn at Arlington put the railroad through Turon instead of Lerado. The Wichita and Rocky Mountain was not built. The Denver, Memphis and Atlantic crossed the Rock Island at Turon.

Most of the businesses moved to Turon and some to Olcott. Seventeen buildings moved at one time. Dr. Brady returned to Tennessee.

Schools

The first school in Bell Township was a subscription school taught by Cal Ely.

The first school district was New Home District 68 organized in 1875 on the N E ¼ of Section 22.

Pleasant View District No. 83 was organized in 1878. Half of it was in Bell Township and half in Grove Township. A sod school house was built in the southwest corner of the S W ¼ Section 6 in Bell Township. Later a frame house was built across the road in Miami Township on the southwest corner of the S E ¼ of Section 1.

Bell District No. 93 was organized in 1879. The school was located in the southwest corner of the S E ¼ of Section 2. The first teacher was Lizzie (Van Nay) Watkins and the second teacher was Nettie Mateer.

Belmont District #95 was established in 1879/80 on Section 32.

Laredo District #134 was established in 1886 in the southwest corner of the S W ¼ of Section 14.

Walnut Grove District No. 155 was organized in 1890 on Section 20.

PATRON'S DIRECTORY OF RENO COUNTY 1902

NAME	BUSINESS	P.O.	SEC.#
Barr, J. W.	Physician	Lerado	14
Bradshaw, L.Y.	Farmer & Breeder of High Grade Galloway Cattle	Lerado	9
Bressler, J.W.	Proprietor Silver Creek Stock Farm; Short Horn Cattle	Langdon	6
Cresswell, Jas.	Farmer/Stockman	Langdon	4
Crotts, C.W.	Farmer/Stockman	Olcott	30
Crotts, J.L.	Farmer/Breeder of Regist. Shorthorn Cattle & Shropshire Sheep	Olcott	30
Dana, J.M.	Farmer/Stockman	Lerado	15
Geesling, Robt.	" "	Lerado	20
Holland, J.M.	" "	Olcott	19
Horrigon, Tim	" "	Lerado	20
Lanham, B.	" "	Olcott	19
Martin, Geo. L.	" "	Penalosa	32
Mauck, C.K.	" "	Lerado	16
Miller, C.A.	" "	Olcott	31
Murray, E.S.	" "	Penalosa	33
Sallee, Samuel	Farmer/Wheat Grower	Penalosa	28
Stevens, Dewitt	Farmer/Stockman	Lerado	16
Woodson, W.R.	Farmer/Breeder of Fine Stock	Lerado	28
Wright, T.E.	Farmer/Stock Raiser	Lerado	15

LODA TOWNSHIP

NAME	BUSINESS	P.O.	SEC.#
Ball, H.R.	Farmer/Stockraiser, Breeder of Herford Cattle, Mammouth Jacks, Percheorn Horses, Poland China Swine	Bone Springs	5
Calkins, S.D.	Farmer/Stockman	Lerado	7
Cole, W.S.	" "	Sego	9
Kelman, S.C.	(Postmaster) Farmer/Stockman	Bone Springs	4
Long, C.S.	Farmer/Stockman	Sego	15
Long, Frank	" "	Sego	38
Shipley, J.W.	Farmer/Stockman/Blacksmith	Sego	8
Sickmon, D.H.	Farmer/Stockman	Sego	3
Vest, Robert	Proprietor, Creamery & Dealer Real Estate	Sego	14
Watkins, E.R.	Farmer/Stockman, Dealer in Gen. Mdse., State Rep.	Sego	14
Yaple, W.N.	Farmer/Stockman	Sego	21

GROVE TOWNSHIP

Name	Business	Address	Section
Bray, G.W.	Farmer/Stockman	Turon	18
Davis, O.H.	Farmer/Stockman	Sylvia	4
McClury, L.B.	" "	Turon	19
Porter, F.E.	" "	Sylvia	4
Rosehery, D.E.	" "	Sylvia	9
Shadduck, R.B.	" "	Turon	32
Sooter, A.L.	" "	Turon	19

 Sources for articles pertaining to the articles about the original township of Langdon are:
 "Kansas Post Offices" compiled by Robert W. Daughman, Pub. by Kansas State Historical Society, 1961.
 "History of Reno County, Kansas", Volumes I & II, by Sheridan Ploughe, Indianapolis, Ind. B.F. Bowen & Co. Inc. 1917.
 "When The Prairies Were New", by Alfred B. Bradshaw. Printed by Turon Printing Press, Truon, KS 1953.
 1902 Atlas of Reno County
 "Vanishing Towns of Kansas", by Forrest Hintz. Publisher: Wichita Eagle Beacon, 1981.
 "Ghost Towns of Kansas", Volumes I,II & III by Daniel Fitzgerald. Pub. by Bell Graphics, Holton, KS.
 "Lerado Ledger" Newspaper published by Frank A. and Leslie Niblack. Vol. 1 Lerado, KS. 1887-1888 Microfilm.

Lerado-Ledger

LERADO, RENO COUNTY, KANSAS.

Entered in the Post-Office at Lerado, Kansas as second class matter.

NIBLACK BROS. Proprietors.

THURSDAY, JAN'Y 6, 1886.

Report of Bell School.

ROLL OF HONOR.

Minnie Bradshaw,	Louis Wagoner,
Alfred Bradshaw,	A. Wagoner,
Lizzie Bradshaw,	Clara Wagoner,
Walter Pratt,	Jno. Showalter,
Ollie Pratt,	Annie Wagoner,
Jessie Hickey,	George Hasty,
Ella Roland,	Daisy Graves,
Bertha Showalter,	J. Showalter,
Mattie Hickey,	Samuel Roland,

TARDY.

Omer Stiffler, Vony Stiffler,

ABSENT.

Rosa Roland, Rosa Pratt.

MISBEHAVIOR.

Chas. Roland, Emrie Hasty.

Russel Showalter.

Miss MOLLIE AYRES, Teacher.

Dec 6, 1886 Pg. 3 Col. 5

Report of Bell School.

ROLL OF HONOR.

Minnie Bradshaw,	Louis Wagoner,
Alfred Bradshaw,	A. Wagoner,
Lizzie Bradshaw,	Clara Wagoner,
Walter Pratt,	Annie Wagoner,
Ollie Pratt,	Ella Roland,
Rosa Pratt,	Rosa Roland,
Jessie Hickey,	Daisy Graves,
Bertha Showalter,	Jno. Showalter,
	Russel Showalter.

TARDY.

Vony Stiffler, Omer Stiffler.

MISBEHAVIOR.

Samuel Roland, Charlie Roland,

Mattie Hickey, George Hasty,

Emrie Hasty.

Miss MOLLIE AYRES, Teacher.

23 Dec Page 2 Col 2

Report of Bell School.

ROLL OF HONOR.

Minnie Bradshaw,	Louis Wagoner,
Alfred Bradshaw,	A. Wagoner,
Lizzie Bradshaw,	Clara Wagoner,
Ollie Pratt,	Annie Wagoner,
Rosa Pratt,	Russel Showalter,
Jessie Hickey,	Daisy Graves,
Bertha Showalter,	Jno. Showalter,
Samuel Roland,	Charlie Roland,
Mattie Hickey,	George Hasty,
	Emrie Hasty.

There was only one pupil tardy, viz: Walter Pratt. The following are the names of those erased on account of absence:

Vony Stiffler,	Omer Stiffler.
Ella Roland,	Rosa Roland.

All pupils were perfect in deportment this week; we can truly feel encouraged. Miss MOLLIE AYRES, Teacher.

THURSDAY, JAN'Y 20, 1887

Report of Bell School.

The following report was intended for publication last week.

ROLL OF HONOR.

Minnie Bradshaw, Alfred Bradshaw, Lizzie Bradshaw, Daisy Graves, Jessie Hickey, Louis Wagoner, A. Wagoner, Clara Wagoner, Annie Wagoner, Mattie Hickey, George Hasty,

ABSENT.

Ollie Pratt, Rosa Pratt, Emrie Hasty, Vony Stiffler, Omer Stiffler, George Bertram, Ella Roland, Rosa Roland, Chas. Roland, Bertha Showalter, John Showalter, Russel Showalter, George O'Neil, Jas. O'Neil.

TARDY.

Walter Pratt, Samuel Roland, David Bertram.

Miss MOLLIE AYRES, Teacher.

THURSDAY, DEC. 9, 1886.

Report of Bell School.

ROLL OF HONOR.

Minnie Bradshaw,	Ollie Pratt,
Lizzie Bradshaw,	Walter Pratt,
Alfred Bradshaw,	Ella Roland,
Amelia Wagoner,	Samuel Roland,
Clara Wagoner,	Rosa Roland,
Annie Wagoner,	Chas. Roland,
Jessie Hickey,	Geo. Hasty,
Bertha Showalter,	Emrie Hasty,
John Showalter,	Rus. Showalter.

The following names do not appear on the "roll of honor" on account of absence:

Daisy Brown,	Minnie Brown,
Daisy Graves,	Louis Wagoner.

And lastly, the names of those who were erased on account of misbehavior; Omer Stiffler, Rosa Pratt, V. Stiffler, Mattie Hickey.

Parents, please aid us in our efforts to impress upon the minds of young America that "a good name is rather to be chosen than great riches."

MOLLIE AYRES, Teacher.

These clippings were taken from the LERADO LEDGER on microfilm at the Hutchinson Public Library, by Pam (THOMPSON) STANSEL.

Ella, Samuel, Rosa and Charlie ROLAND are the children of Jacob and Nancy (CLAY) ROLAND. Rosa is the great grandmother of Pam Stansel.

Jacob ROLAND later moved his family to Nickerson, KS.

GROVE

Scale 2 Inches to the Mile.

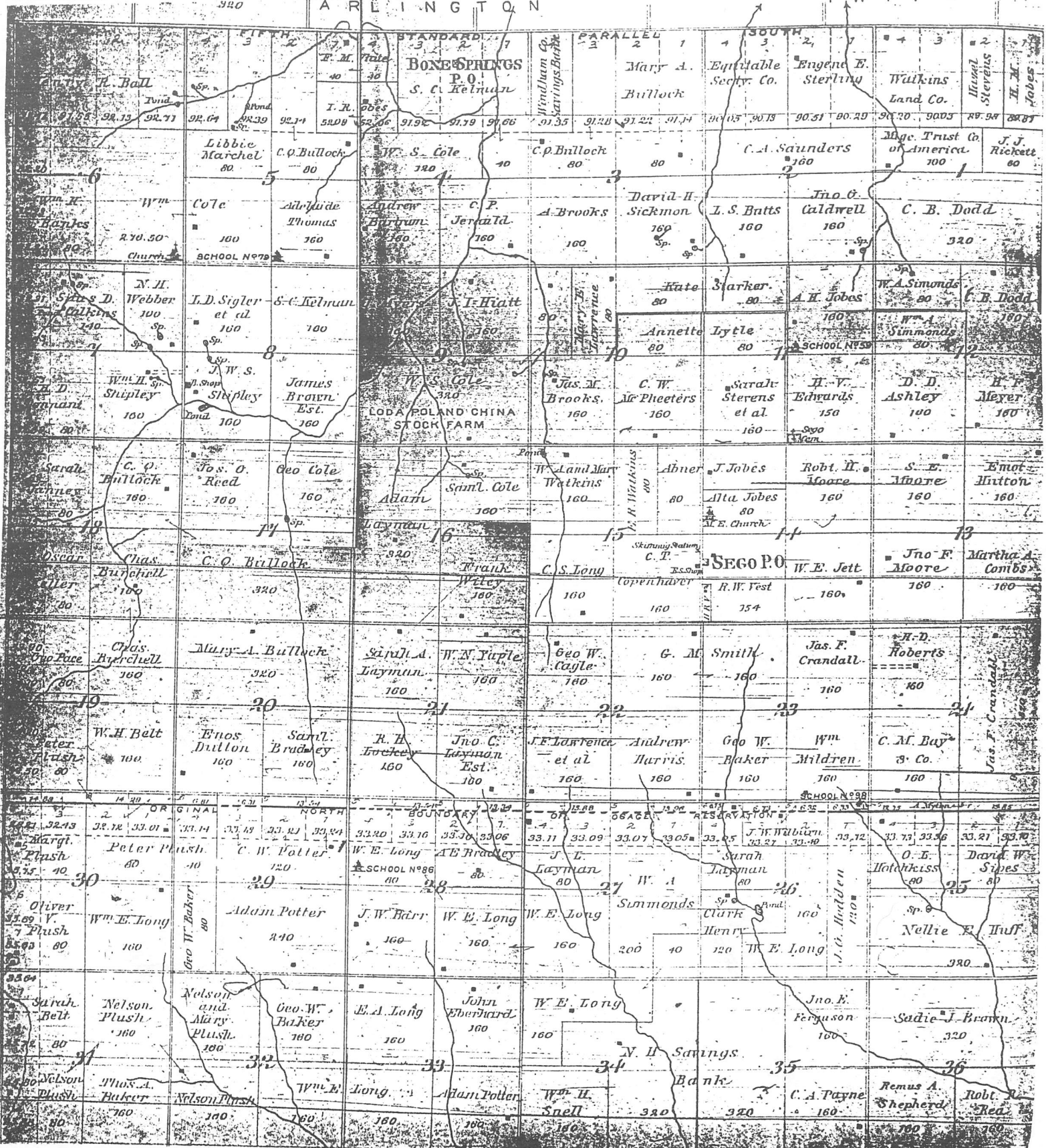
Township 25 South, Range 10 West. of the 6th Principal Meridian.

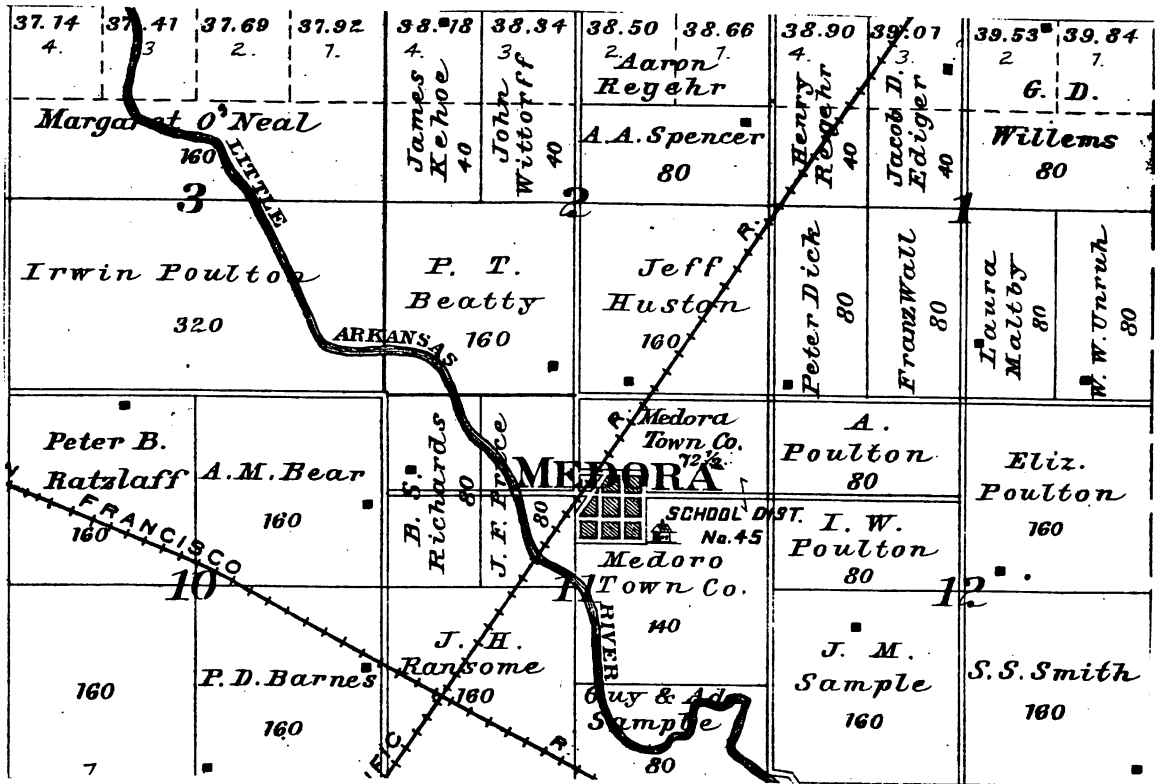
S Y L V I A								T W P.								
39.85 3 H. S. Thompson 80 6 Wm Hook 280	39.80 4 J. B. Whitaker 80	39.75 5 T. C. Maughlin 80	40.00 2 John Cole 160	40.25 7 LOCUST GROVE FARM F.F. Porter 160	40.42 4 O.H. Davis 160	40.45 3 W. Hays 160	40.52 2 M. Coons 160	40.58 7 Geo. Nelson 80	40.37 2 Geo. Lemon 80	40.23 7 A. Wagoner Jr. 80	40.07 4 D. J. Fair & Co. 80	40.7 7 Henry White 120	40.26 7 W. D. Hall 40	40.19 3 W. F. Harrison 320	40.11 7 E. R. Thompson 160	40.04 7 G. W. Mitchell 160
Geo. W. Davis 100 D. F. Weishaar 100	D. F. Weishaar 320	G. W. Markle 160 E. S. Ellsworth 160	G. W. Markle 80 SCHOOL DIST. No. 118 David Seward 80	A. J. Green 160 H. G. Ball 160	A. J. Green 160 G. M. Hoskinson 80	A. A. Spear 160 A. E. Edwards 160	A. J. Green 160 J. C. Wolcott 80 Martha Carter 80	M. Coons 160 A. W. Grubbs 320	A. J. Green 160 J. C. Wolcott 80 Martha Carter 80	M. Coons 160 A. W. Grubbs 320	A. J. Green 160 J. C. Wolcott 80 Martha Carter 80	A. W. Grubbs 320 H. E. Ducey 160	H. E. Ducey 160 Peter Hartsel et al. 160	E. R. Thompson 160 G. W. Mitchell 160 Peter Hartsel et al. 160	E. R. Thompson 160 G. W. Mitchell 160 Peter Hartsel et al. 160	E. R. Thompson 160 G. W. Mitchell 160 Peter Hartsel et al. 160
D. F. Weishaar 160 18 Chas. Austin 160	Robert Myers 160 17 H. F. Linder 320	Elijah Seward 160 16 R. F. Avery 80 D. Schneebenger 80	W. G. Pierson 80 Wm Farris 80 R. F. Avery 80 D. Schneebenger 80	A. Wright 160 16 C. E. Rinaca 160	Louisa Edwards 160 15 H. T. Hathaway 160	A. D. Holmes 320 15 A. D. Holmes 320	T. B. Steel 160 14 T. B. Steel 160 Wm Felts 80	Asa Carter 160 14 Asa Carter 160	H. E. Ducey 160 13 H. E. Ducey 160	J. I. Mantall 80 John Garmey 80	Wm Lock 40 T. G. Powell 120 E. M. Hopper 40	Wm Lock 40 T. G. Powell 120 E. M. Hopper 40	Wm Lock 40 T. G. Powell 120 E. M. Hopper 40	Wm Lock 40 T. G. Powell 120 E. M. Hopper 40	Wm Lock 40 T. G. Powell 120 E. M. Hopper 40	Wm Lock 40 T. G. Powell 120 E. M. Hopper 40
EVERGREEN STOCK FARM L. 19 W. A. Hendrix 160 J. S. Marriott 160	W. A. Hendrix 160 20 J. S. Marriott 160	W. A. Hendrix 160 20 J. S. Marriott 160	W. A. Hendrix 160 20 J. S. Marriott 160	W. A. Hendrix 160 20 J. S. Marriott 160	W. A. Hendrix 160 20 J. S. Marriott 160	W. A. Hendrix 160 20 J. S. Marriott 160	W. A. Hendrix 160 20 J. S. Marriott 160	W. A. Hendrix 160 20 J. S. Marriott 160	W. A. Hendrix 160 20 J. S. Marriott 160	W. A. Hendrix 160 20 J. S. Marriott 160	W. A. Hendrix 160 20 J. S. Marriott 160	W. A. Hendrix 160 20 J. S. Marriott 160	W. A. Hendrix 160 20 J. S. Marriott 160	W. A. Hendrix 160 20 J. S. Marriott 160	W. A. Hendrix 160 20 J. S. Marriott 160	W. A. Hendrix 160 20 J. S. Marriott 160
C. G. Galt 80 30 J. H. McClurg 160	J. H. McClurg 160 29 J. H. McClurg 160	J. S. Wilkinson 160 28 J. S. Wilkinson 160	J. S. Wilkinson 160 28 J. S. Wilkinson 160	J. S. Wilkinson 160 28 J. S. Wilkinson 160	J. S. Wilkinson 160 28 J. S. Wilkinson 160	J. S. Wilkinson 160 28 J. S. Wilkinson 160	J. S. Wilkinson 160 28 J. S. Wilkinson 160	J. S. Wilkinson 160 28 J. S. Wilkinson 160	J. S. Wilkinson 160 28 J. S. Wilkinson 160	J. S. Wilkinson 160 28 J. S. Wilkinson 160	J. S. Wilkinson 160 28 J. S. Wilkinson 160	J. S. Wilkinson 160 28 J. S. Wilkinson 160	J. S. Wilkinson 160 28 J. S. Wilkinson 160	J. S. Wilkinson 160 28 J. S. Wilkinson 160	J. S. Wilkinson 160 28 J. S. Wilkinson 160	J. S. Wilkinson 160 28 J. S. Wilkinson 160
A. Compton 240 31 J. F. Feltz 160	R. R. May 66 32 R. R. May 66	Sofia Shadduck 160 33 Sofia Shadduck 160	S. W. McClurg 160 33 S. W. McClurg 160	Mary Soper 160 33 Mary Soper 160	Mary Soper 160 33 Mary Soper 160	Mary Soper 160 33 Mary Soper 160	Mary Soper 160 33 Mary Soper 160	Mary Soper 160 33 Mary Soper 160	Mary Soper 160 33 Mary Soper 160	Mary Soper 160 33 Mary Soper 160	Mary Soper 160 33 Mary Soper 160	Mary Soper 160 33 Mary Soper 160	Mary Soper 160 33 Mary Soper 160	Mary Soper 160 33 Mary Soper 160	Mary Soper 160 33 Mary Soper 160	Mary Soper 160 33 Mary Soper 160
J. F. Feltz 160 34 J. F. Feltz 160	L. H. Rogers 160 35 L. H. Rogers 160	T. H. Stallings 160 36 T. H. Stallings 160	T. H. Stallings 160 36 T. H. Stallings 160	T. H. Stallings 160 36 T. H. Stallings 160	T. H. Stallings 160 36 T. H. Stallings 160	T. H. Stallings 160 36 T. H. Stallings 160	T. H. Stallings 160 36 T. H. Stallings 160	T. H. Stallings 160 36 T. H. Stallings 160	T. H. Stallings 160 36 T. H. Stallings 160	T. H. Stallings 160 36 T. H. Stallings 160	T. H. Stallings 160 36 T. H. Stallings 160	T. H. Stallings 160 36 T. H. Stallings 160	T. H. Stallings 160 36 T. H. Stallings 160	T. H. Stallings 160 36 T. H. Stallings 160	T. H. Stallings 160 36 T. H. Stallings 160	T. H. Stallings 160 36 T. H. Stallings 160

LODA

Scale 2 Inches to the Mile.

Township 26 South. Range 8 West. of the 6th Principal Meridian.

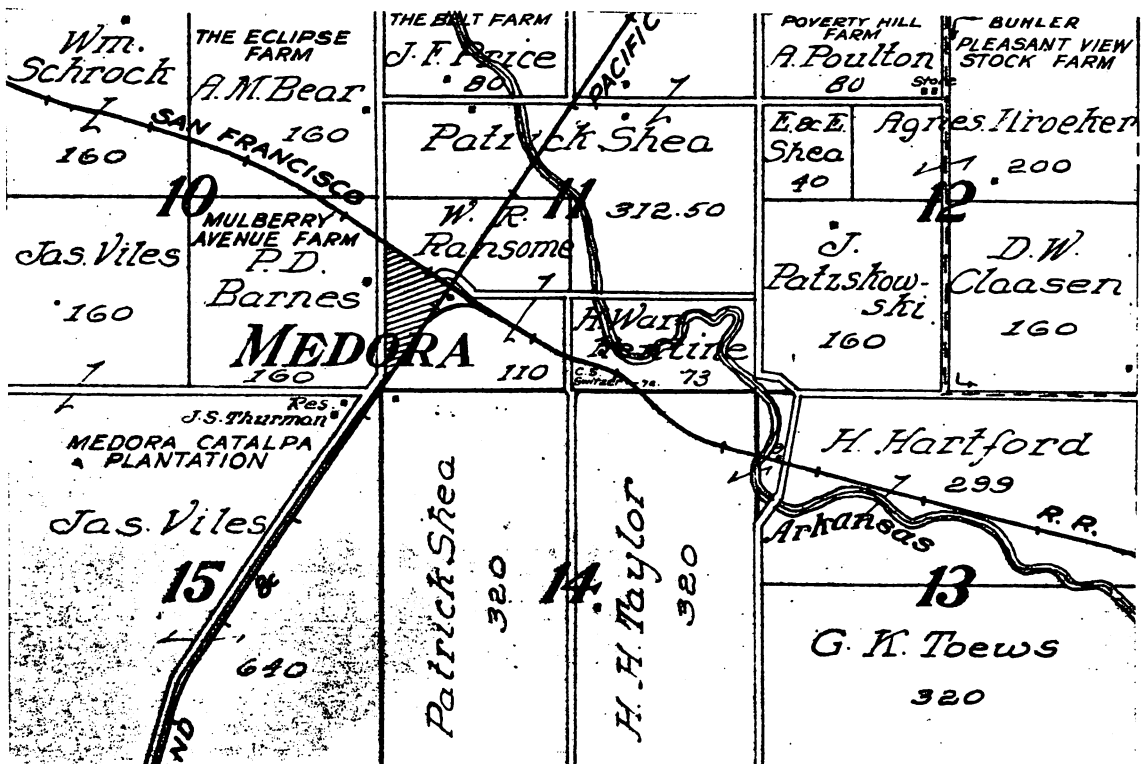




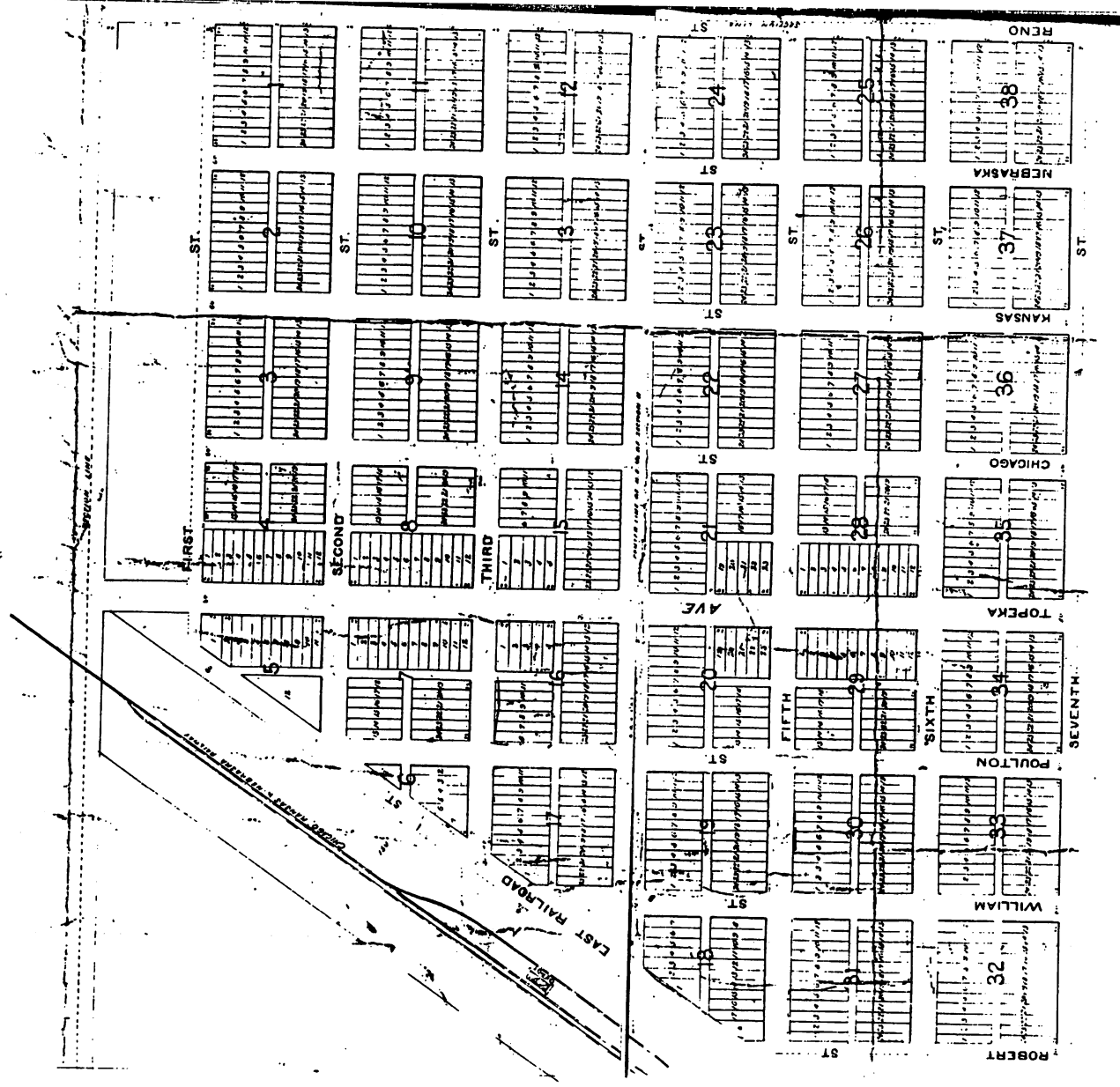
TOP: 1902 Plat Map of Medora Township showing the location of "Old Medora".

BOTTOM: 1918 Plat Map of Medora Township showing the location of "Medora Junction", present site of Medora Town.

The intersecting railroads are the St. Louis & San Francisco and the Rock Island & Pacific.



MEDORA
 IN N.E. SECTION II, T. 22 S. R. 5 W.
 RENO CO. KANSAS
 SCALE: ONE INCH = 100 FEET



**APPOINTMENTS OF POSTMASTERS TO MEDORA
 UP TO 1901**

John J. Dick	Aug. 16, 1887
H.C. Bear	Jan. 25, 1888
William Foulton	Feb. 12, 1890
Patrick W. Furlong	Mar. 6, 1894
Mary Richards	Jul. 27, 1896
Jesse D. Weaver	Dec. 23, 1900
Louisa A. Harrison	Feb. 23, 1900
Harvey J. Rickenbrode	Oct. 24, 1901

MEDORA and MEDORA JUNCTION

by Karen POULTON BURGESS

I've heard them all, like, "We were traveling north on 61 and I sneezed and missed Medora." Or "I blinked when I went by and missed Medora." Those were standard jokes about my home town as I was growing up. We locals would join in the fun, when asked about the size of our town, we would always reply, about 100 people, 12 dogs, 15 cats, etc. I imagine that most residents of small towns feel the same, knowing that our town wasn't really much of a town but at the same time having a deep sense of pride because it is our own. Anyway, that's the way I've always felt. Much of my pride was because I knew that my family's history was entwined with that of Medora's. For as long as there has been a Medora there have been Poulton's living in Medora. For that reason when the editors of **THE SUNFLOWER** asked me to write on the subject I didn't hesitate. It was something that I had wanted to do for a long time but could never get motivated. Having a deadline is a great motivator.

In November I gave a book review of "Ghost Towns of Kansas", for the general meeting. I commented on how sad it was about some of the towns dying just because a railroad missed going through the town. At the time I didn't realize that is what happened to the first Medora. As a child growing up I knew that there had been a previous Medora but I believed that the reason for the move was because of flooding of the Little Arkansas River. I'm sure that was part of the reason, however the San Francisco RR was what delivered the dying blow.

Medora, the first Medora, was platted and filed for record with the register of deeds on April 20, 1887. It was owned by the Reno Town Co., Mr. L.A. Bigger, President; Mr. C.F. Jolson, Secretary. Its location being about a mile and a half northeast of the present Medora.

Reno Town Co. originally bought the land from Mr. William Poulton. Interesting to note for me that one of the streets was named Poulton, another William and another Robert. William Poulton was my Great Grandfather and Robert was his child that died in infancy.

The 1895 state census list 61 households and 63 families that gave their address as Medora. It's my belief that only a hand full of these actually lived in town.

The Pacific railroad ran along the northwest edge of the town. About the turn of the century the San Francisco RR built its branch line northwesterly, only about 1½ miles to the south west of the town site. The Rock Island immediately had plans for relocating its station at the junction with the Frisco branch. Residents of Old Medora opposed the idea. Then one Sunday morning residents awoke to discover the station was being moved south to the new location. Objectors were unable to obtain a court injunction because it was Sunday.

The new town of Medora Junction was then platted and filed on October 27, 1905. Soon the hotel had moved down, then the rest of the residents, including my Poultons. Owners of the new town were Wm. and Mary Ranson.

**1895 STATE CENSUS HOUSEHOLDS
LISTING MEDORA AS POSTOFFICE**

James Kehoe	James Harrington
P.T. Bely	Peter Epp
G.M. Sample	George Martin
G.D. Hadsell	Jacob Williams
J.S. Harrison	Jacob Striekben
A.P. Maltby	J.W. Picket
Jeff Huston	Patterson W. Frulen
J.C. Croons	J.M. Flanagan
William Poulton	R.E. Calbert
John Croons	R.W. Avery
Charles Wakefield	Frank Nickel
Lisse Spencer	Isacc Nickel
Benjamin Richards	William Hartford
John Panshaw	John Nickel
J.M. Sample	Henry Goerzen
Mark Dunworth	William Vincent
Adrain Kinley	John Precious
W.H. Barnard	Henry Regher
Thomas Koop	R.A. Soper
S.S. Smith	E. Kenoyer
C.V. Kenoyer	I. A. Whitrow
J.W. Longshore	William Johns
Jacob Deaks	J.F. Harder
Henry Hartford	Albert Shortenkirk
Henry Strahmeyer	W.A. Nickels
Ira Sealy	David Simmons
A.J. Breaver	J.C. Fulk
Nelson Phillips	Jonathan Wright
William McIlliwane	W.H. Marshall
E.C. Fry	W.G. Taylor
William Unruh	Frank Unruh
Arthur Bear	

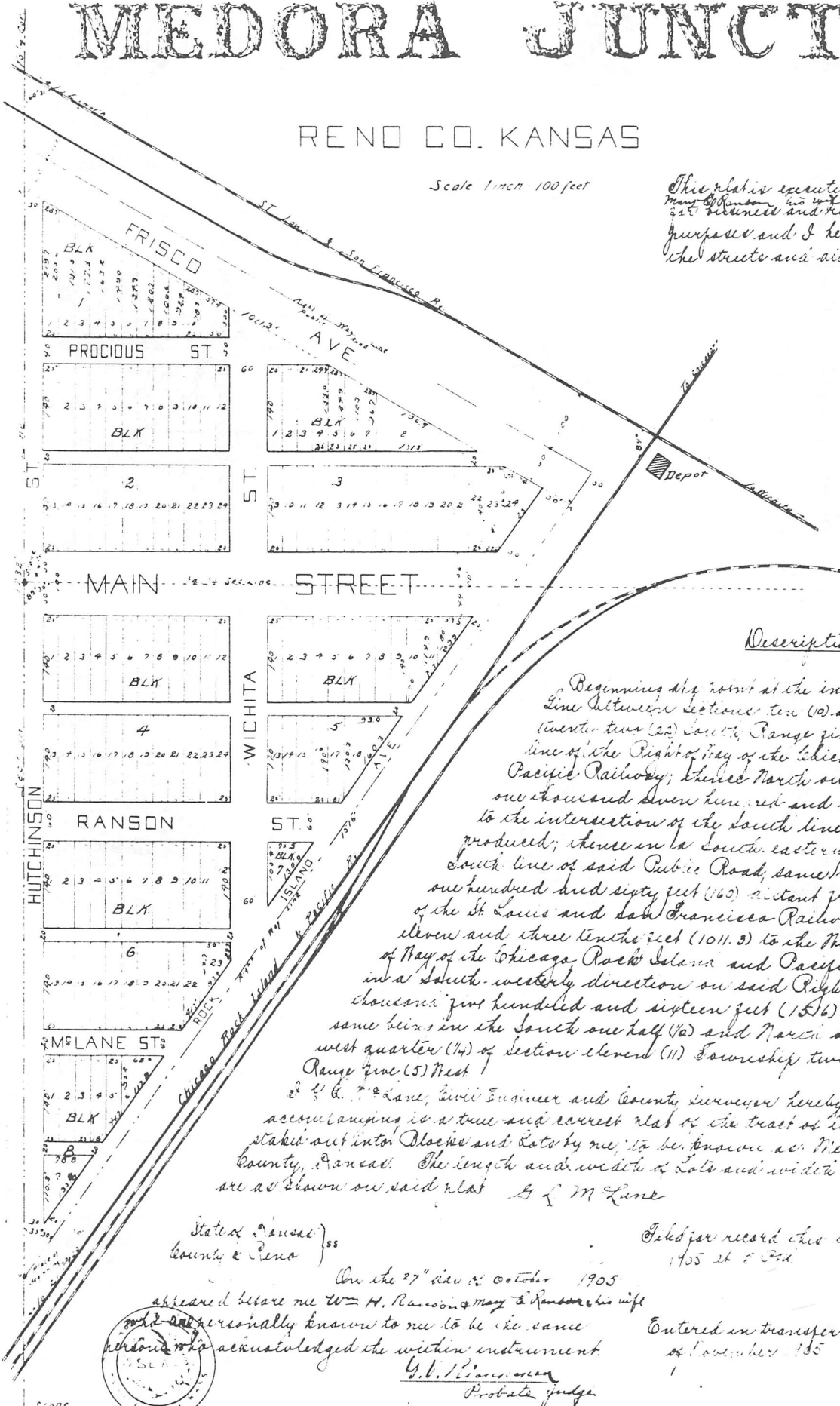
MEDORA JUNCTION

RENO CO. KANSAS

Scale 1 inch = 100 feet

This plat is executed by Wm H Ransom
Mary C Ransom his wife
of the business and residence property
purpose and I hereby dedicate
the streets and alleys to the public.

Wm H. Ransom
Mary C Ransom



Description

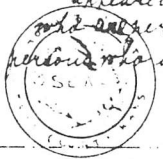
Beginning the point at the intersection of the section line between sections ten (10) and eleven (11) Township twenty-two (22) South Range five (5) West and the West line of the Right of Way of the Chicago Rock Island and Pacific Railway; thence North six said section line one thousand seven hundred and thirty-two feet (1732) to the intersection of the South line of the Public Road produced; thence in a South easterly direction on the South line of said Public Road, same being parallel and one hundred and sixty feet (160) distant from the main track of the St. Louis and San Francisco Railway, one thousand and eleven and three tenths feet (1011.3) to the West line of the Right of Way of the Chicago Rock Island and Pacific Railway; thence in a South westerly direction on said Right of Way line one thousand first hundred and sixteen feet (1516) lot place of beginning same being in the South one half (1/2) and North one half (1/2) of the South west quarter (1/4) of section eleven (11) Township twenty-two (22) South Range five (5) West.

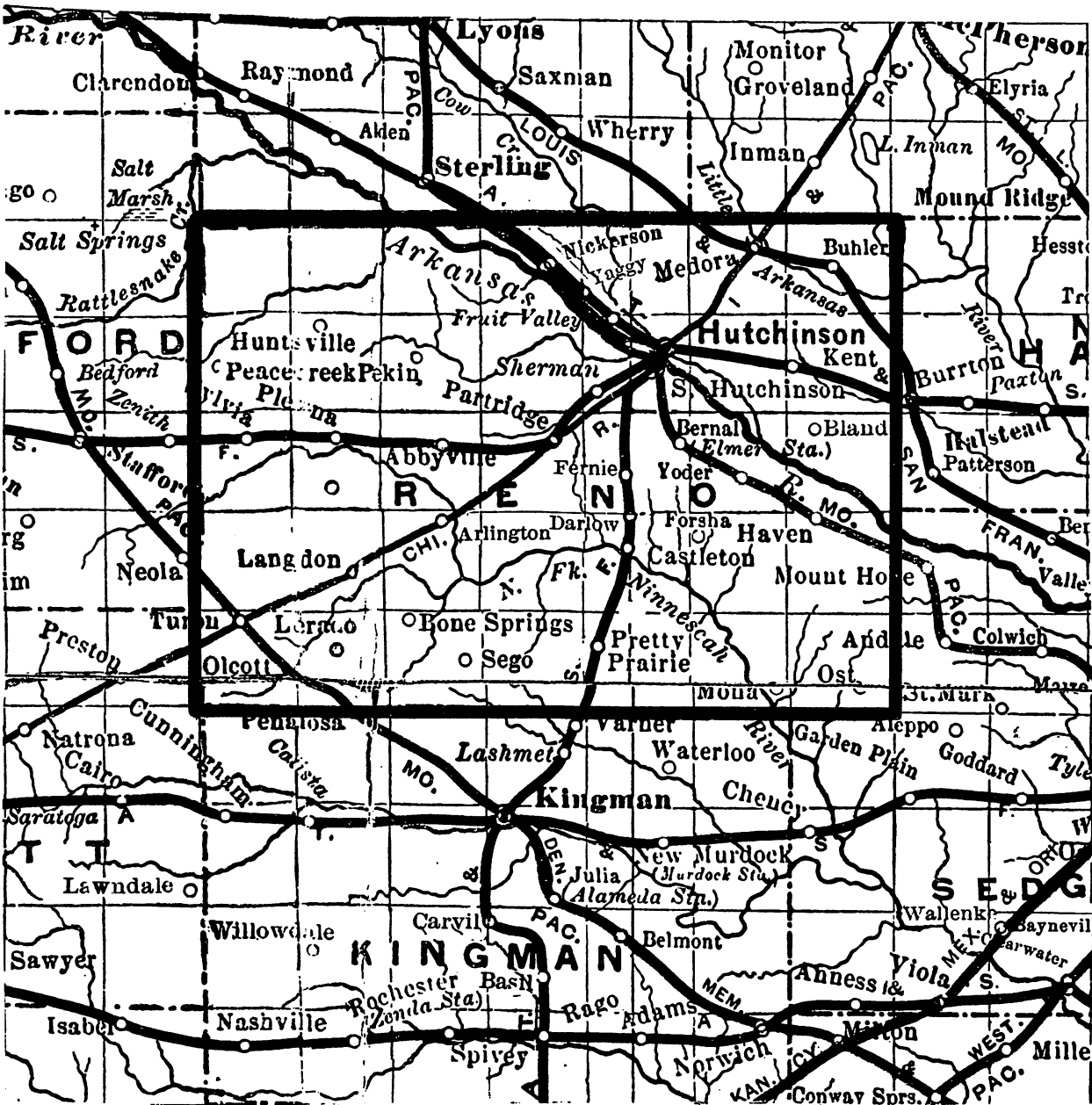
Wm H. Lane, Civil Engineer and County Surveyor hereby certifies that the accompanying is a true and correct plat of the tract of land surveyed and staked out into Blocks and Lots by me, to be known as Medora Junction Reno County, Kansas. The length and width of Lots and widths of streets and alleys are as shown on said plat.

State of Kansas
County of Reno

On the 27th day of October 1905
appeared before me Wm H. Ransom & Mary C Ransom his wife
who are personally known to me to be the same
persons who acknowledged the within instrument.
G. V. Powers
Probate Judge

Filed for record this the 5th day of November
1905 at 8 P.M.
J. J. [Signature]
Register of Deeds
Entered in transfer Record this the 5th day
of November 1905
J. J. [Signature]
County Clerk





This map shows the railroads which crisscrossed Reno County around 1890.

NEW MEMBERS

Eileen (HOLLINGSWORTH) GRAY

Mary (WOLF) MOULDS

THE FEDERATION OF GENEALOGICAL SOCIETIES

The 1990 Conference will be held August 18, 1990, in Salt Lake City, UT. The four day conference will feature 120 classes, workshops, & panel discussions for beginners, intermediate, and experienced researchers.

To receive registration materials write to: Windows to the Past, FGS/UGA 1990 Conference, P.O. Box 746, Salt Lake City, UT. 84110-0746.

GOONS (England)

Guild Of One Name Studies: Are you searching for an uncommon surname in England? There may be a one-name study that can help you. Look for your surname in the Register of One Name Studies. Write to: The Guild of One Name Studies, Box G., 14 Charter house Building, Goswell Road, London ECLM 7BA, England or Ruth Filbert has a list.

DID YOU KNOW?

The Kansas State Historical Society maintains a card file listing each individual who was named on the 1885 Agricultural Census.

Kentucky and Tennessee Map Johnson and Ward map 1865-1870 - shows the counties, communities, rivers, streams and other features for these two states and all of those surrounding them. A reprint of the original 18"x24" MP-0044 \$8.00. Published by Mountain Press, Inc.

A Suggestion: The next time you are viewing a microfilm use a pink or green sheet of paper on the microfilm reader if the reflection is too dim.

My apology to Art Graves whose name was left off the 1988-89 membership list in the SPECIAL CHARTER EDITION of **THE SUNFLOWER**. Ruth Hair FILBERT

IN MEMORY OF

Ivan Tompkins, who died 25 February 1990, at Byers, KS. Mr. Tompkins was a charter member of the Reno County Genealogical Society.

DON'T DAMAGE YOUR DOCUMENTS

The Spring 1989 issue of the newsletter published by the Friends fo the Kentucky Public Archives, Inc. has some interesting notes as follows: "Some useful objects on your desk may destroy information stored on your paper records, photographs and computer diskettes. The adhesive on pressure sensitive tapes, such as Scotch brand tape and Magic Mend, contains a great deal of acid and literally eats paper. This damage is irreversible and, at the very least, will leave acid stains on the paper.

Self-stick notes, such as Post-it Notes, are a handy and efficient way of leaving messages and marking documents. The sticky top edges of the notes, however, leave behind an adhesive when the note is removed. Also the colors of the notes tend to run when wet, so they should not be used on papers of value.

Magnetic paper clip holders magnetize the paper clips that are stored in them. If these clips are then used to attach a note to a diskette, for example, the magnetized clop can damage or erase the information on the diskette.

Do not store diskettes near a telephone, stereo speaker or anything magnetized.

NEWSPAPER MICROFILM

The Kansas State Historical Society is planning to release 40,000 rolls of microfilmed records, which includes most of the vast newspaper collection for circulation through the Inter-library Loan Program in the summer of 1990.

When funding permits a listing of microfilm will be printed and distributed through local public or academic libraries.

The Reno County Genealogical Society has sent a request to the Kansas State Historical Society for the return of all newspapers (from Reno County) that have been microfilmed.

HUTCHINSON FACTS

HUTCHINSON CHAMBER OF COMMERCE

The Chamber was organized 12 April 1919. The officers were: President, George E. Gano; First Vice-President, V.M. Wiley; Second Vice-President, Frank Colladay; Treasurer, J.C. Petro.

The Board members were: F.W. Cooter, Fred French, Charles Hitchcock, C.H. Humphreys, Gene Jordan, A.C. Malloy, Edward McNaghten, A.R. Scheble, Charles Colladay, V.M. Wiley, George Gano.

FIRST PETITION, CITY OF HUTCHINSON

Signers of the petition for Hutchinson to be incorporated as a city of third class, 15 August 1872 were: E. Wilcox, Houston Whiteside, Christopher Fox, W.E. Hutchinson, Eugene Hallowell, E.L. Fletcher, Jacob Rubert, G.B. Sagerty, S.S. Williams, J.S. Fay, William Jackman, J. McMurry, Thomas Hackett, William A. Griffith, J.L. Penny, H. McMurry, L.B. Hammond, William Ingham, G.M. Erwin, H.J. Bailey, G.A. Brazee, M. Jordan, C. McMurry, E. Pierce, and C.C. Hutchinson.

1902 Hutchinson High School

Football Team

In 1902, the first football team was organized with 11 players. The coach was Charles W. Kline. The players were: Bob Brown, Colt Clark, Glover Colladay, Walter Jones, Cliff Kelly, Roy Koonty, George McKinstry, Dr. R.E. Padfield, George Rozel, Bob Vance and John Webb.

FIRST CITY MAIL CARRIERS - 1888

J.F. Blackburn, Jr. Charles Oswald
 Fred Schumaker Grant Prather
 Emmett Hutton O.C. Turman

Postmaster: J.F. Blackburn
 Office Staff

Bert Lawson M. Barker Lillian Taylor

ITEMS FOR SALE

CEMETERY RECORDS OF RENO COUNTY

Burials from 1860's through 1978. \$20 plus \$1.75 postage and handling. Kansas residents add \$1.25 sales tax.

EARLY MARRIAGE RECORDS OF RENO COUNTY
 1872 - 1913. \$20 plus \$1.50 postage and handling. Kansas residents add \$1.24 sales tax.

1880 CENSUS RENO COUNTY, KANSAS NEW!!
 \$15 plus \$1.50 postage and handling. Kansas residents add \$.95 sales tax.

GUIDE TO RENO COUNTY RECORDS \$1.50

SURNAME FILE INDEX 2.50

1985 SUPPLEMENT (to above index) 1.50

CHARTS:

- Ancestor chart .05
- Census Worksheet .05
- Family chart .05
- Additional Children sheet .05
- Federal Census Searched sheet .05
- Census Worksheet Packet (10) .50
- Family Chart Packet (20) 1.00
- Ancestor Chart Packet (20) 1.00
- Beginners Packet 1.50
- Additional Children Packet (10) .50
- 15-Generation Ancestor Chart 1.25
- RCGS Note Pads--ruled, unruled 1.00

(Add \$1.00 postage and handling for each item ordered over \$1.00.) Kansas residents add 5.75% sales tax. Send orders to: RENO COUNTY GENEALOGICAL SOCIETY, P.O. BOX 5, HUTCHINSON, KS 67504-0005.

THE SUNFLOWER, a quarterly publication
 Pam (THOMPSON) STANSEL, Editor
 P. O. Box 5
 Hutchinson, KS 67504-0005

Non-profit Organization
 U. S. Postage Paid
 Hutchinson, Kansas
 Permit No. 171

ADDRESS CORRECTION REQUESTED

RCGS

Dues are

Due NOW!