



THE SUNFLOWER

VOLUME IX, NUMBER 4

A Quarterly Publication

FEBRUARY 1988

IN THIS ISSUE

- 38 Officers and Committee Chairmen
RCGS Information
President's Message
- 39 Bits and Pieces
The Serendipity Genealogist
Queries
- 40 Genealogical Acquisitions of the Hutchinson Public Library
- 41 Finding your way around the Oklahoma Land Records
- 42-43 Mary Collingwood—Pioneer Woman
- 44-45 Vital Records of Reno County, Book II, Deaths 1897
- 46 Ancestor Chart of Kay Ann (MALLICOAT) TARM
Ancestor Chart of Barbars (HOLMES) SIMPSON
- 47 Grove Township Directory
Turon High School Graduates (continued)
- 48 Turon High School Graduates (continued)
Items for Sale

OFFICERS for 1987-88

President		
Lawrence J. COX		665-8720
Vice-President		
Donna (JOHNSON) ALLEN		662-0744
Recording Secretary		
Kathleen (Kathy BEANE) CHANCELLOR		663-9009
Corresponding Secretary		
Susan JOHNSON		669-8867
Treasurer		
Jolene (MITZNER) COOK		662-6278
Immediate Past President		
Ruth (HAIR) FILBERT		663-2804

STANDING COMMITTEE CHAIRMEN

Consultant		
Malinda (CROTTS) PETERSON		663-3453
Education and Speakers Bureau		
Ruth (HAIR) FILBERT		663-2804
Historian		
Harriet (HELMICK) CUSHING		662-0738
Librarian		
Lydia (HEWITT) STREETER		662-1103
Membership		
Winnie (BROCK) HENDERSHOT		662-6509
Edith (DUFFIN) JONES		662-8922
Obituary File		
Alta (ENGLER) PROCTOR		665-5966
Program		
Roy GARDNER		662-8192
Projects		
Lydia (HEWITT) STREETER		662-1103
Maxine (PARKER) LINDBURG		663-3968
Deloris (EHLI) MOORE		662-9455
Publicity		
Leona (LEIS) KELLER		662-7401
Quarterly Editor		
Arless (MOSER) EILERTS		662-5714
Research		
Arlene VINCENT		662-8693
Sales (Forms) and Ways and Means		
Lynn and Pam (THOMPSON) STANSEL		663-8678
Roy GARDNER		662-8192
Special Account Treasurer		
Roy GARDNER		662-8192
Surname File		
Carrolyn (BURDETTE) MILLER		669-9757
Who's New		
Opal (MATLACK) CULVER		665-6204

Meeting place: Hutchinson Public Library
 901 N. Main Street
 Hutchinson, Kansas 67501
 316-663-5441

Library Hours: Monday through Friday 9 a.m.-9 p.m.
 Saturday 9 a.m.-6 p.m.
 Sunday 1 p.m.-5 p.m.

Reno County Genealogical Society

The Reno County Genealogical Society of Hutchinson, Kansas, was founded in 1978 for the purpose of fostering genealogical research, promoting the exchange of information and encouraging the deposit of genealogical and historical materials in established libraries and archives.

Membership in the Reno County Genealogical Society is open to anyone interested in genealogy. ~~Dues are \$5.00 per year single membership and \$7.50 per year family membership.~~ All dues are paid at once for the period of 1 April 1987 to 31 March 1988.

Donations and gifts to the society are tax deductible.

Meetings are held on the third Monday of each month (except December) usually in the auditorium of the Hutchinson Public Library, 9th and Main, 7-9 p.m.

The quarterly publication of the Reno County Genealogical Society, *The Sunflower*, is mailed in February, May, August and November. The staff welcomes the contribution of records and stories pertaining to genealogy and history.

Address Change?

If you plan to change your address, please notify the society in advance. Our quarterly is mailed at a special rate of postage and the post office will not forward any with the wrong address. They throw them away.

It is a huge task to keep the mailing list up to date and we need your help. **Please tell us when you change your address.** Thank you.

President's Message

For those of you who have German Ancestry, a word of advice: don't give up hope in tracing that lineage.

Through Mr. Wollmershauser, who conducted our German seminar last year and who recommended Max Steinbaur, a German genealogist, I was able to add 38 additional ancestors to my pedigree. Mr. Steinbaur traced my Hofeld line back six more generations. My cost was only \$280. I feel that this was very reasonable. For one to do the same work, the cost of travel, lodging, etc. would far exceed that amount. Then most of us would not be able to read German which would make searching very difficult and time-consuming.

The Genealogical Helper, in most issues, lists some German genealogists whom you might engage to do research for you. To enhance success, you need to know the location (at least approximate) from which your ancestor came and the approximate time your ancestor left Germany. Find out in advance the cost.

It does take time and some correspondence. It took Mr. Steinbaur seven months to complete the task and get his report to me. Remember, whomever one engages that person will be doing work for others at the same time. As in my case, there may be false starts, wrong leads, etc. which will cause some delays. Just don't give up. There are usually some records some place. —LJC

The Sunflower Staff and Contributors

The Sunflower staff, those who have participated in researching, writing, stapling, and distributing the quarterly, include: Arless (MOSER) EILERTS, Editor; Ruth (HAIR) FILBERT; Edith (DUFFIN) JONES, Maxine (PARKER) LINDBURG, Carrolyn (BURDETTE) MILLER, Danny MILLER, Betty MORGAN, Jayne (KOEPEKE) PURCELL, Lynn STANSEL, Pam STANSEL, Lydia (HEWITT) STREETER, and Arlene VINCENT.

We are a very flexible group and would welcome assistance from other members. Please call the editor if you are interested in helping with the quarterly.

Bits and Pieces

Kin Relationship Not Always Clear

Dot Brown, author of a genealogical column, points out the value of belonging to The National Genealogical Society and backs her advice with an example of the kind of information available in the NGS Newsletter.

From the writings of Donald Lines Jacobus, the Newsletter clarifies the various meanings of kinship terms which we often fail to realize may have meant something entirely different in an earlier day.

Brother in early documents could have meant a sibling, the husband of a sister, the brother of a man's wife, the husband of a sister-in-law, a half-brother, a step-brother, or a church colleague.

Nephew comes from the Latin *nepos*, meaning grandson, and in some early wills referred to both male and female grandchildren.

In-laws can refer to step-parents or step-children as well as other relationships created by marriage.

Senior/Junior does not necessarily indicate a father-son relationship in pre-19th century use. There may have been a relationship—nephew-uncle, for example—or the terms may have simply been convenience terms to help identify two non-related persons with the same name living in the same area. [Editor's note: Used in the same ways are the terms Elder and Younger as in Michael the Elder.]

Natural son denotes a blood relationship rather than one achieved by marriage or adoption. It does not mean illegitimate. In 17th century wills, an illegitimate child was commonly called "my base son," or "my bastard son."

Now wife used in a will does not necessarily mean that the person making the will had a previous wife. It means the bequest is intended for the person who was his wife at the time he made the will and not for any subsequent wife he might have.

Allas used between two surnames usually means an illegitimate birth, with the person adding the surname of his reputed father to that of his mother.

[Adapted from: Dot Brown. "Family Quest," *Pensacola News Journal*, Jan. 25, 1987, 4E]

Inevitable Laws of Genealogy

You search forever for your great-grandmother's maiden name, and when you finally find it, your mother tells you she already knew that, but that you just never asked her.

[Adapted from Topeka Genealogical Society of Kansas, Jan. 1986.]

KCGS to Sponsor Salt Lake City Trip

The Kansas Council of Genealogical Societies is sponsoring a trip to Salt Lake City, Sept. 10-19.

The tour will leave Topeka on Saturday morning, pick up passengers along I-70 and spend Saturday night in Denver. It will arrive in Salt Lake City on Sunday evening for a full week, Monday through Saturday, for research.

The return trip will begin Sunday morning, Sept. 18, with an overnight in Denver.

LaRita Neeley is coordinator for the trip. The cost for sharing a double room will not exceed \$350. Address questions to KCGS, P.O. Box 8038, Topeka, KS 66608-0038.



The Serendipity Genealogist

by Arless Ellerts

Serendipity is happy chance. However, I have come to believe that most things that we'd like to think happen by serendipity are not the product of chance at all.

My serendipity in genealogy research usually comes as an unexpected payoff for a lot of hard spadework. My latest serendipity experiences prove my point.

As some of you know and the rest of you will learn when you get this belated quarterly, my job, health, and family obligations have kept me running (perhaps "hopping" is a better word in light of my recent recuperation from foot surgery)—so much so that my own genealogical research has dwindled to the place that if it weren't for the serendipity results, I'd be a non-researcher.

When I was a novice genealogist, I spent quite a bit of time writing letters to everyone I could find who was working on the same lines I was.

In the Moser lineage researcher seemed to crop up as everyone's favorite Moser expert. I initiated a correspondence with this man who very generously shared his knowledge.

Recently, an Oklahoma cousin found the same expert. When she traced her roots back to my great-grandfather's sister Sarah, she wrote to the Moser expert, asking for help. He referred her to me because he knew of my work in Bedford and Somerset, Pa.

So in November, I received a letter from her that helped me in identifying one more of my great-grandfather's elusive siblings. Serendipity or just reward for effort?

My second experience was a letter, apparently out of the blue, which could be traced to the early work I did listing all my lines with the *Genealogical Helper*. My newest correspondent went to the old copies of GH when he identified a Moser in his ancestry.

This sixth cousin, once-removed, and I are busily copying information for each other about the children of our original immigrant ancestor.

Today's mail brought two more pieces of serendipity. One was a bundle of information from a Moser in Bedford who five years ago answered an ad I put in the local paper. He hadn't been interested previously in genealogy, but now he is visiting with his cousins and siblings to provide new information for me.

The other from a Missouri cousin, (whom I met through correspondence) was a court proceeding which identified the siblings and children of another great-grandfather.

What I have finally decided is that serendipity is a product of hard, methodical work, laid down as part of a system. When all the bases are covered, I can go on about other things assured that if there is any serendipity around, it will find me.

It comes through just often enough to delight me and make me thankful for all my methodical, hard-working forebears.

I can still hear my father saying, "If a job is worth doing, it's worth doing right."

As usual his advice was worth heeding.

Queries. . .

My grandmother, **Mary E. Harness**, came to Reno County as a child. She was born in Mattoon, Ill., 1865. Her father, **Isaac L. Harness**, was a bugler in the Civil War. Grandmother lived at Pretty Prairie in Castleton Township. I have located Isaac Harness's grave in the Lone Star Cemetery. I would like to know the identity of the infant that is buried beside him and any events about the Harness family. Louise Barrett, 215 N. High, Riley KS 66531.

* * * * *

Address queries to Arlene Vincent, RCGS, P.O. Box 5, Hutchinson, KS 67504-0005.

Genealogical Acquisitions of the Hutchinson Public Library

- Automation Activities in Kansas Libraries.* Sponsored by the Kansas Library Network Board. Nov. 1985. Compiled by Mary R. Anderson. Gift of Becky Hatton.
- A Guide to Special Collections in Kansas.* Edited and compiled by Gene DeGruson, Michael Kelly, Angus Mundy and Virginia Quiring. Nov. 1986. Sponsored by Kansas Library Network Board. Gift of Becky Hatton.
- Genealogical Compendium of Books and Articles in Print.* March 1987. Published by Martin/Barnett Genealogical Company, Inc. 4314 Menana, Houston, TX 77035.
- AASLH Spring Catalogue 1987.* AASLH Suite 102, 172 Second Avenue North, Nashville, TN 37201.
- Knox County Illinois Genealogical Society Quarterlies.* Beginning with Sept. 1986, Vol. 14, No. 3 issue. Gift of Jolene Mitzner Cook.
- Index to 1860 Federal Census Knox County Illinois.* By Knox County Genealogical Society, Galesburg, Ill. Gift of Jolene Mitzner Cook.
- Index to Death Records 1878-1910 Knox County Genealogical Society, Galesburg, Ill.* Gift of Jolene Mitzner Cook.
- Obituaries Knox County, Galesburg, Illinois, newspapers 1853-1897.* Copied by Durwood A. Allaman. Published by Knox County Genealogical Society. Vol. I. Gift of Jolene Mitzner Cook.
- Obituaries Knox County, Galesburg, Illinois, newspapers 1909-1910.* Copied by Durwood A. Allaman. Published by Knox County Genealogical Society. Vol. VI. Gift of Jolene Mitzner Cook.
- Cemetery Records Knox County, Illinois, Cedar Township.* Copied by Durwood A. Allaman. Published by Knox County Genealogical Society, Galesburg, Illinois. Gift of Lydia Hewitt Streeter.
- Cemetery Records Knox County, Illinois, Chestnut Township.* Copied by Durwood A. Allaman. Published by Knox County Genealogical Society, Galesburg, Illinois. Gift of Lydia Hewitt Streeter.
- Cemetery Records Knox County, Illinois, Henderson Township.* Copied by Durwood A. Allaman. Published by Knox County Genealogical Society, Galesburg, Illinois. Gift of Lydia Hewitt Streeter.
- Cemetery Records Knox County, Illinois, Indian Point Township.* Copied by Durwood A. Allaman. Published by Knox County Genealogical Society, Galesburg, Illinois. Gift of Lydia Hewitt Streeter.
- Cemetery Records Knox County, Illinois, Ontario Township.* Copied by Durwood A. Allaman. Published by Knox County Genealogical Society, Galesburg, Illinois. Gift of Lydia Hewitt Streeter.
- Cemetery Records Knox County, Illinois, Orange Township.* Copied by Durwood A. Allaman. Published by Knox County Genealogical Society, Galesburg, Illinois. Gift of Lydia Hewitt Streeter.
- Index to Reno County Kansas Naturalization Records.* Revised by R. Jolene Mitzner Cook. 1983. Gift of R. Jolene Mitzner Cook.
- Index to Reno County Biographies included in "A Biographical History of Central Kansas."* Compiled by R. Jolene Mitzner Cook. 1983. Gift of R. Jolene Mitzner Cook.
- A copy of biographical index to Reno County, Kansas.* By Sheridan Ploughe. Donated by R. Jolene Mitzner Cook.
- Biographical Index to "Arlington" by J.A. Fehr.* Compiled by R. Jolene Mitzner Cook. 1982. Gift of R. Jolene Cook.
- The Forgotten Settlers of Kansas.* Vol. III and IV. By Kansas Council of Genealogical Societies. (Purchased, May 1987).
- Ancestor Hunt.* Quarterlies 1982-May 1987. Published by Ashtabula County Genealogical Society, 54 E. Jefferson St., Jefferson, Ohio 44047. Gift of Inez Howard (May 1987).
- Searching for Your Ancestors.* By Gilbert H. Doane. Paperback. Gift of Roy A. Gardner (June 1987).
- Onondaga County Federal Census Abstract 1800.* By Tree Talks, Central New York Genealogical Society, Vol 22, No. 4. Dec. 1982. Donated by Harriett Cushing (July 1987).
- Index to Michigan Research found in Genealogical Periodicals.* By Maud Quigley. Western Michigan Genealogical Society. Donated by Harriett Cushing (July 1987).
- Michigana Index 1955-1964.* Published by Western Michigan Genealogical Society. 1981. Donated by Harriett Cushing (July 1987)
- Michigana Index 1965-1974.* Published by Western Michigan Genealogical Society. 1981. Donated by Harriett Cushing (July 1987)
- Michigana.* Quarterlies. Miscellaneous. Vol. 25, No. 4; Vol. 26, Nos. 1-4; Vol. 27, Nos. 1-4. 1980-1982. Published by Western Michigan Genealogical Society. Donated by Harriett Cushing (July 1987).
- Centennial—First Presbyterian Church, Hutchinson, Kansas, 1872-1972.* (A brief history of the First Presbyterian Church, Hutchinson, Kansas.) Gift of Roy A. Gardner (1987).
- Lake County Illinois Genealogical Society Quarterly.* By Lake County Genealogical Society, Libertyville, Ill. Donated by Mrs. Marson H. French.
- Illinois State Genealogical Society Newsletter.* Illinois State Genealogical Society, Springfield, Ill. Donated by Mrs. Marson H. French.
- The Report.* Ohio Genealogical Society, Mansfield, Ohio. Donated by Mrs. Marson H. French.
- DAR Magazine.* Daughters of the American Revolution, Washington, D.C. Donated by Esther Wheeler, Mrs. Marson H. French, and Mrs. William F. Peterson.

(continued next page)

Finding your way around the Oklahoma land records

by Arless Eilerts

If you had Oklahoma "boomers" and "sooners" in your history, you may have more luck tracing some of them if you adopt a systematic approach to land records.

The first step is to send \$5 per name to be searched to Southwest Oklahoma Genealogical Society, P.O. Box 148, Lawton, OK 73502. Along with the results of your search, you will receive back from them a map showing the land openings in Oklahoma.

The areas assigned to the Cherokee, Creek, Choctaw, Seminole, and Chickasaw nations (the five civilized tribes) were not part of the lands opened to settlement between 1889 and 1906. However, most of the rest of the Oklahoma lands were opened in that time by lottery, by run or by sealed bids. Some were assigned by allotment.

A section in the center of the state, called the unassigned lands, was the first to be opened. It was opened by run April 22, 1889. Next were the areas of the Iowa, Sac and Fox, Pottawatomie, and Shawnee tribes, which were opened by run Sept. 22, 1891. Two small areas called the Tonkawa Lands and the Pawnee Lands were settled by allotment in 1891 and 1892 respectively.

The Cheyenne and Arapaho lands in West Central Oklahoma were opened by run April 19, 1892. The Cherokee outlet, just south of the Kansas border, was opened by run Sept. 16, 1893. The Comanche, Kiowa, and Apache lands and the Wichita and Cad-do lands were opened by lottery between

June 9 and Aug. 6, 1901. The Ponca and Oto-Missouri lands were allotted in 1904, the "Big Pasture" along the southern border of Oklahoma was opened by sealed bids in December of 1906, and the Kaw lands (a small area around Ponca City) were allotted in 1906.

Another map sent with the search shows the volume number of the Oklahoma Tract Books. You will receive copies of all pages containing entries for the name you send. The search is done by individual name, not by surname.

After obtaining the information from the Federal Tract Books, the next step is to order land entry papers and patent. If your ancestor had a common name (like my James Miller and John Miller), you will need to spend some time with the maps to eliminate people of the same name who are not your ancestors.

In Oklahoma Territory, after the entryman fulfilled his homesteading requirements, he received his "final certificate of entitlement to patent." Cash payment for land entitled him to a "cash entry certificate." The General Land Office (now the Bureau of Land Management) in Washington, D.C., then issued a "patent," which was a first-title deed transferring the land from the government to the individual or company.

If your homesteading ancestor did not "prove up," the "number of receipt" entry will locate the land entry papers (homestead papers). If he cancelled by relinquishment, it should show the date.

You will need to consider that he may have done some trading if another homesteader took up the homestead on the same date. After 1908, the patent number seems to be inserted in the Federal Tract Book.

Using the information from the Tract Books (name, complete land description, date, land office, and all numbers), you can order a copy of the "land entry case file," which is the paper work. It may include the entryman's declaration of intent, supporting documents, witness testimonies, and naturalization papers. The land entry papers are ordered from: General Branch, National Archives, Washington, D.C. 20409.

You may also order a copy of the "patent," which should include such information as occupation, citizenship, residence, map, and neighbors.

The patent is ordered from: Bureau of Land Management, Department of Interior, P.O. Box 1449, Santa Fe, NM 87501.

The tract books which are 72 volumes on 22 rolls of microfilm now have a surname index, making the task of locating a homesteader very simple. The books are indexed originally by land description. They include people who applied for homesteads or Indian allotments in Oklahoma Territory (not Indian Territory, except for a small portion) and do not include allotments of the Five Civilized Tribes and Osage Indians.

Anna B. Clevenger is the person to whom you should write at the Southwest Oklahoma Genealogical Society if you wish to order a search.

Letter from the Editor

We're late! We're late! We're sorry!

Have you ever had a period of time in your life when everything that could go wrong did? Your editor has been having one of those delightful experiences.

First, personal and family illness curtailed her activity for most of the month of January. Second, several night activities related to her job have cut the time she has available to do the newsletter. Third, the typesetting equipment she uses to produce the newsletter has become increasingly less accessible.

Before the May newsletter comes out, the first and third of these problems will be solved. However, if she is to continue doing the newsletter, more people in the society are going to have to make it their business to do research and to write articles for us. These people are in addition to the faithful ones who have been providing us with material on a regular basis.

When you are doing your own research, take time to look up something about Reno County for us.

I hope the May newsletter will not be as late as this one was. You can help tremendously by contributing. The deadline will be the end of April.

Call me or drop your article in the mail to me.

—ANE

Acquisitions (continued)

Blue Grass Roots. Kentucky Genealogical Society, Frankfort, Ky. Donated by Esther Griswold (November 1987).

Newsletter. Marshall County Historical Society, Marysville, Kan. Donated by Esther Griswold (November 1987).

Newsletter—"Illumination." Republic County Historical and Genealogical Society, Belleville, Kan. Donated by Esther Griswold (November 1987).

Newsletter "Past and Present." Washington County Historical Society, Washington, Kan. Donated by Esther Griswold (November 1987).

Fremont Frame Journal 1914-1934. Donated by granddaughter, Carolyn Paine of Marysville, Calif. (January 1988).

Early Mackinac (Michigan). By Meade C. Williams. New York: Duffield and Company, 1912. Donated by Helen Streeter Rosenblad.

Mary Newman-Collingwood—Pioneer Woman

[Editor's note:

The Reno County Historical Society has printed up the following information as a booklet which they distribute. The information was originally printed Sunday, Feb. 13, 1916, in the *Hutchinson Gazette* under the headline "Pioneer Woman Settler Is Dead," with a second headline reading, "Mrs. M. Collingwood Went Through Countless Hardships—Was First Woman in Neighborhood."]

Mrs. Mary Collingwood, of Pretty Prairie, died yesterday afternoon at 4:40 o'clock at her home, at the advanced age of eighty-nine years. The funeral services will be held in the Methodist church at Pretty Prairie tomorrow, and will be in charge of the pioneer woman's pastor, Rev. Mr. Young.

Seven children of the ten born to her, survive the mother. They are: John A. Collingwood, Thomas, James A., Daniel F., Abner Collingwood, Mrs. S.G. Demoret of Pretty Prairie, Mrs. M.E. Updegraff of Medicine Lodge. William James Collingwood born in Cincinnati, Ohio, May 14, 1844, died June 17, 1845. Joseph died Feb., 1912. Jane E. died Feb., 1915. Fourteen grandchildren, and nineteen great-grandchildren are her descendants.

The story of Mary Collingwood's life is a vivid bit of the history of Reno county and Southwest Kansas as this relation, written last spring by Miss Cora Sponsler, whose parents also shared pioneer life—yet a vastly easier and more comfortable life. The story is accurate in detail and sketches an interesting personality whose life has been in every sense a well rounded one.

Came in Prairie Schooner.

In the fall of '72, just seven years after the violent struggle for Abolition, Mrs. Mary Collingwood, then forty-six years old, fired with the vision of the great possibilities of the western freelands, gathered together her nine fatherless children and fared forth in a couple of prairie schooners for "Bleeding Kansas."

Her husband had been a tanner and wholesale shoemaker, and she had lived in the city of Cincinnati for the first twenty-three years of her life. She was married at the age of sixteen, and for seven years after her marriage she helped bind shoes and boots. A girl was hired to do the housework, for help in housework cost much less than help in the shop; and Mary Collingwood was ever the alert business woman. Then they bought a tan bark farm of forty acres, in southern Indiana, and she lived there until six years after her husband's death. She then sold her farm and other possessions, and with two new covered wagons and four horses, \$2,200 and her six sons and three daughters, Mary Collingwood left the woods of Indiana for the prairies of Kansas.

Hutchinson Just Settled.

Although seven years after the war, the awful bitterness of the Kansas-Missouri conflict had not died

out, and while going through Missouri, the older boys took turns staying up nights to guard the horses. They journeyed along the Santa Fe trail until they came to Hutchinson, which was then about a year old, and from that metropolis of about 100 inhabitants, the Collingwoods drove twenty-two miles southwest and found their journey's end. It was in the fall and the prairie for miles around had been swept by fire, of grass and everything but herds of buffalo. There was not a white family between that place and Texas.

Had Dwelling Novelty.

Mary Collingwood's mother was too proud to think of her daughter living in a "dug-out" or even a sod house, so she gave her \$250, providing she would build a house of wood. So, although the dugouts and sod houses were much more comfortable, the Collingwoods built a house 14x16, boxed up and down, no plaster, and just like a barn, with cracks through which the icy and almost constant prairie winds whistled most mockingly. Ten feet from the stove it was freezing cold. That first winter, buffalo hunters would ride up to the little house to get warm, and they would hire the youngest children to give up their places by the stove. These children then had to go to bed to keep warm, but they had lots of fun as well as some money out of it.

There were only three families within a strip forty miles long and fifteen miles wide. They had to drive long distances for hay and corn, flour and pork. Herds of buffalo would come close to the house, and buffalo meat was delicious. Buffalo chips, called by some "surface coal," afforded plenty of fuel.

Boys in Blizzard.

One warm sunny afternoon of that winter in '72, three of her boys drove about six miles away to collect fuel, and a blizzard came with all its old-time sudden fury. The blizzard brought intense darkness, and the boys started home through the blinding snow and wind, and with the usual Collingwood luck, found their way to one of the three dwellings on those plains. Their mother was almost frantic, but could do nothing until the next morning. Then another one of the sons went to the nearest neighbors, about a mile away, to get help to search for the boys, and there he found them. The neighbor lived in a dugout and the door opened out. The snow had drifted high against the door and had to be shoveled away before the dugout dwellers could get out.

Named Pretty Prairie.

In the spring of 1873, a stage route was started from Hutchinson to Medicine Lodge, a distance of about seventy-five miles. Mrs. Collingwood established a postoffice in the front of her house,

and all the mail was kept in a tea can. She had bought fourteen yoke of oxen and started five boys to "breaking prairie." The soil thus uncovered was rich and black, and the business woman was satisfied. In the spring sun, the wide prairie looked so beautiful that she called the place "Pretty Prairie."

An addition was built to the house, and travelers stopped there for food and shelter, for about twelve years. The money made in this way paid for current expenses, for there was scarcely anything made from crops during this time. In 1874 was grasshopper year in Kansas. Grasshoppers, which in small groups are as harmless as butterflies, came that summer in a great mass, darkening the day, and eating everything, from crops to clothes hung on the line. The next year, a terrible hail storm destroyed the crops on Mrs. Collingwood's claim. It was so fierce that it tore the shingles off the west side of the roof and broke the panel in the door. Of course, there were the uncomfortable but harmless sandstorms, also prairie fires, and hot winds which destroyed a corn crop in three days, and drouths. There were many Indian scares, but no massacres near Pretty Prairie. Once a stragglng band of Indians came to the Collingwood house, and Mrs. Collingwood was rather afraid of them, so she sent her youngest child, Ella, to the neighbors, and she stayed by herself and managed to have no trouble. Another time, such a terrible story of a coming Indian raid was told that she took her children and fled from the house. That night, they camped on the banks of the Ninnescah river and the next morning returned to find everything as they had left it.

Everybody Danced Then.

A little school was built in 1874, and eight children in all attended, three from Mrs. Collingwood's family. The school house was the social center, where "literaries" and dances were held. In those early days, even the Sunday school superintendent danced. Mrs. Collingwood herself, neither danced, played cards, nor knit, but spent her spare time reading. Not one of her nine splendid children ever cared for books or dreams. The genius for business seemed uppermost in each. Mrs. Mary Collingwood and her children now own 56,000 acres of Kansas land, but the part she is most proud of, is the original eight quarters, which went through all the hard times without a mortgage, and are still owned by her family. Last summer the wheat land yielded between 300,000 and 400,000 bushels.

This great pioneer woman worked all those difficult years without discouragement, except once at Christmas time, during the first winter. Then they had exhausted the fuel supply and could get no more, and all had to go to bed to keep from freezing. She then read her Bible as long as she could, with the tears blinding her eyes and struggled fiercely with discouragement. But in the spring, when she

saw the black soil, her faith in her undertaking never left her again.

Mrs. Collingwood's daughter, Mrs. Demoret, is typical of the spirit of Kansas. She was a very little girl when she came to Pretty Prairie, and has lived through droughts, hot winds, bad years and good years, but when asked what hardships the family had undergone, she laughed and in her frank, happy way said that she couldn't remember any. Mrs. Demoret is a practical matter of fact business woman, having been cashier or president of the Pretty Prairie bank for the past eighteen years. She laughs often, kindly, hearty laughter, for there seems to be no bitterness in her nature.

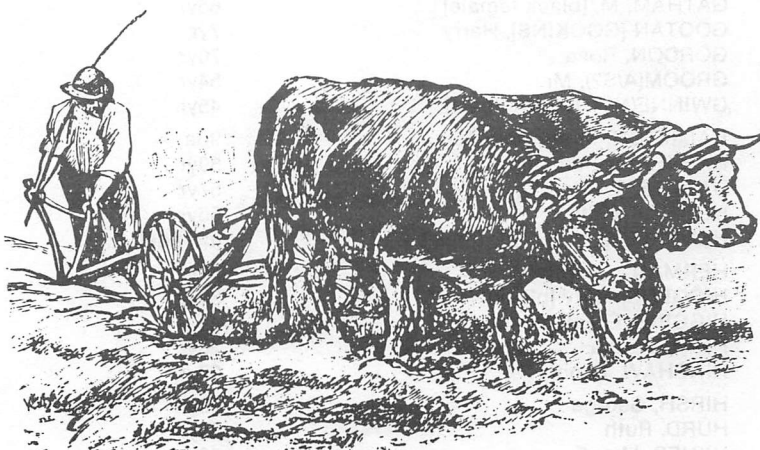
The money of the Collingwoods makes no display in Pretty Prairie. Their homes are comfortable and modern, furnished richly in nothing but delightful hospitality. Of course, they have automobiles, not luxurious ones, but practical little machines, which anyone of moderate means can afford.

Every summer, a big Pretty Prairie picnic is held in the grove at the south side of town and, although the leaves of the cotton woods may have all dried up overhead, and there happens to be no rich blue grass under foot, people come from miles around, and good fellowship of the true Kansas variety pervades the grove along with the sunshine which can always be depended upon for Kansas picnics.

Mrs. Collingwood, for the last few years has, because of old age, been unable to attend the picnics at the grove. Mrs. Demoret takes her aged mother's place at the picnic table, which she has had loaded with delicious things for friends invited from neighboring towns, and others who may have come without a lunch.

There is no place for snobbishness or anything petty around Mrs. Demoret and her pioneer mother, for the doing of big and kindly things has left no room for narrow, petty thoughts.

[Mary Newman-Collingwood b. 24 Aug 1826, Cincinnati, Ohio; d. 12 Feb 1916, Pretty Prairie, Kan.; m. Dan Collingwood, 23 Apr 1846.]



Vital Records of Reno County, Kansas—Book II, Deaths 1897

Name	Age	Date	Place
AMBLER, J. [male]	37yr	13 Nov	Hutchinson
ASHER, Wm.	22yr	14 Oct	Plevna
AUDT, Chas. W.	36yr	11 Jan	Nickerson
AXLINE, A. [male]	66yr	4 Mar	Arlington
BAKER, Clarence	18yr	2 Aug	Hutchinson
BAKER, Daniel	[no age]	3 Dec	Hutchinson
BAKER, Infant [female]	11mo	2 Jul	Hutchinson
BARDER, Lee	4mo	13 Oct	Reno County
BATCHEL(E/O)R	77yr	27 Sep	Hutchinson
BAXTER, Mollie	45yr	7 Jun	Hutchinson
BIRCH, J.A. [male]	74yr	17 Nov	McPherson County
BLAIR, Ida	2	14 Feb	Hutchinson
BREEDLOVE, Infant [female]	6mo	10 Jan	Hutchinson
BROOKER, Irma	11mo	8 Jun	Hutchinson
BRUCE, Raymond	1	— Jul	Hutchinson
BRYAN, Eli D.	68yr	2 Dec	Hutchinson
BUCKLEY, C.P. [female]	62yr	7 Oct	Langdon
BURGESS, W.O.	40yr	6 Oct	Hutchinson
BURTNETT, Infant [no sex given]	[no age]	5 Feb	Hutchinson
CAFFRY, Fanny	50yr	11 Apr	Hutchinson
CA(ARNEY?), M. [female]	55yr	1 Sep	Hutchinson
CANNELL, Francis [male]	4mo	15 Mar	Hutchinson
CECIL, Flora	2	28 Apr	Arlington
CHAMBERS, Chas	56yr	28 May	Hutchinson
CHRISTENSON, Florence	3mo	4 Aug	Arlington
COIN, Reba	6mo	11 Mar	Hutchinson
COLE, D.J. [male]	73yr	9 Jun	Hutchinson
COLLINS, Forrest	1	30 May	Hutchinson
COLVIN, Mrs.	44yr	18 Mar	Hutchinson
CONDON, Mrs. P.	45yr	16 Apr	Grant Twp.
COOKSEY, Thomas	48yr	6 May	Hutchinson
COX, Amelia	5mo	20 Jun	Hutchinson
CRIPPEN, Wm.	45yr	16 Apr	Arlington
DELAM/DELANO, Stephen	82yr	15 Jul	Reno County
DRAKE, James	48yr	13 Dec	Hutchinson
DUNN, Pearl M.	19yr	12 Jul	Reno County
EMPRY, Mrs. Sara	53yr	27 Nov	Hutchinson
ESKELSON, K. [female]	70yr	29 Jun	Reno County
EZELL, James L.	40yr	9 May	Hutchinson
FAIR, F. [male]	65yr	18 Jun	Reno County
FENTON, Arthur	22yr	9 Dec	Hutchinson
FINNELL, Dan	1½	24 Oct	Arlington
FINNELL, Mrs. Will	40yr	31 Apr	Langson
FLEMING, J.B. [male]	66yr	25 Feb	Hutchinson
FLYNN, Mrs. R.H.	35yr	19 Jun	Lerado
FOSTER, D.P. [male]	22yr	3 Apr	South Hutchinson
FRANZ, Sebastian [male]	[no age]	30 Sep	Castleton
FRASER, May	11yr	25 Jun	Abbyville
GALLIATIA, Catherine	3	13 Nov	Hutchinson
GASKIN, Julia	64yr	10 Feb	Hutchinson
GATHAM, M. [black female]	65yr	14 Jan	Hutchinson
GOOTAN [GOOKINS], Harry	7yr	19 Jul	Hutchinson
GORDON, Rosa	70yr	13 Oct	Hutchinson
GROOM(A/S?), Mr.	54yr	19 Aug	Lerado
GWINNE(N/R?), G.W. [male]	45yr	15 Sep	Hutchinson
HAMILTON, Infant [female]	9da	22 Apr	South Hutchinson
HARKER, L. [female]	59yr	3 Jan	Hutchinson
HARPER, T.V. [male]	57yr	25 Nov	Reno County
HEDRICK, Kate	55yr	21 Aug	Reno County
HENNSLEY, _____ [male]	[no age]	2 Oct	Langdon
HERMAN, J.P. [male]	52yr	10 Sep	Nickerson
HIGGENS, Mary [black]	50yr	13 Oct	Hutchinson
HIGGINS, G. [black male]	60yr	13 Apr	Hutchinson
HIGH, Bertha	23yr	23 Oct	Hutchinson
HINSHAW, Elinor	27yr	28 Jan	Hutchinson
HIRSH, George	60yr	26 Jul	Reno County
HURD, Ruth	65yr	26 Sep	Hutchinson
HYNES, Mrs. E.	40yr	7 Jan	Arlington

(continued next page)

Vital Records of Reno County, Kansas—Book II, Deaths 1897 (continued)

Name	Age	Date	Place
JONES, L.M. [female]	40yr	23 Oct	Hutchinson
JORDON, E.W. [male]	55yr	23 Feb	Hutchinson
KENNADY, J.W. [male]	70yr	26 Oct	Hutchinson
KOHS, Chas.	73yr	16 Apr	Langdon
KUHN, Wm.	62yr	25 Mar	Hutchinson
LACKEY, J.W. [male]	81yr	15 Jan	Rice County
LASKEY, Chas	22yr	23 Nov	Hutchinson
LASKY, Infant [female]	2mo	4 Dec	Reno County
LEHMAN?, Josie	37yr	16 Oct	Buhler
LEVY, Mrs.	60yr	2 Oct	Hutchinson
LITTLE, Infant [female]	2	4 Feb	Hutchinson
MAGUIRE, Katie	6yr	18 Apr	Haven
MANN, W.G. [male]	36yr	22 Sep	Reno County
MARTIN, Mrs. A.D.	40yr	12 May	Hutchinson
MC CORD, Helen	10wk	9 Sep	Hutchinson
MC GRAYER, Wm.	80yr	22 Apr	Nickerson
MC KINSTRY, Sara	40yr	24 Oct	Hutchinson
MC MILLAN, Jane	62yr	24 Nov	Hutchinson
MENNIS, Norah [black]	30yr	12 Aug	Hutchinson
MICHNER, Gladys	4mo	17 Jan	Nickerson
MILLER, Jacob B.	67yr	12 Jun	Hutchinson
MOONEY, Mary J.	28yr	25 Feb	Hutchinson
MOORE, Malinda	67yr	1 Sep	Reno County
MOORE, W.B. [male]	77yr	2 Dec	Reno County
MUCK, Rachel	50yr	15 Mar	Haven
MULLEN, A. [female]	3mo	15 Jul	Hutchinson
NYBERG, Mary	[no age]	27 Nov	Reno County
NYE, Geo	4wk	14 Aug	Hutchinson
OAKS, Chester H.	77yr	22 Aug	Hutchinson
OWEN, Laura [black]	3mo	17 Jan	Hutchinson
PAYNE, Elizabeth	77yr	9 May	Hutchinson
PAYNE, Eva M.	2mo	16 Jan	Hutchinson
PAYNE, Infant	2mo	10Jan	Hutchinson
PHILLIPS, Clyde L.	11mo	2 Jul	Hutchinson
PIKE, P. [male]	6mo	2 Dec	Reno County
PINKSTON, Joseph	[no age]	7 Oct	Reno County
POE, John R.	52yr	12 Dec	Hutchinson
RANDALL, Kate C.	25yr	15 Dec	Hutchinson
RATHBURN, E. [female]	65yr	20 Aug	Hutchinson
RAY, Mrs. J.A.	48yr	16 Jan	Arlington
RAYLE, Geo.	1	4 Dec	Reno County
REA, M.P. [male]	73yr	18 Apr	Hutchinson
REDICK, J. [male]	60yr	21 Feb	Hutchinson
REVELLE, Mrs. Julia	78yr	29 Mar	Hutchinson
RIDGE, Wm.	27yr	12 Aug	Hutchinson
ROGERS, Infant [female]	2mo	22 Sep	Hutchinson
SAMPLE, Mollie	23yr	2 Mar	Medora
SCOTT, James	35yr	21 Aug	Hutchinson
SEEDLE, Walter M.	3	11 Jun	Reno County
SELFS, Nora A.	39yr	25 Jun	Hutchinson
SELLARS, Mabel	10mo	12 Jul	Reno County
SIMPSON, Mary M.	82yr	12 Jan	Hutchinson
SMITH, C. [male]	6mo	27 Mar	Hutchinson
STE[EMMENS?], Infant [black]	4	1 Feb	Hutchinson
STEVENS, _____	8yr	19 Feb	Hutchinson
STRALEY, Della L.	5	17 Jan	Hutchinson
SUTTON, Infant [male]	1mo	21 Mar	Hutchinson
SWAN, K_____ [female, black]	21yr	18 Aug	Hutchinson
SWANSON, Jno.	50yr	20 Mar	Reno County
TAYLOR, Earl	11wks	21 Sep	Reno County
THRASHER, Mrs. M.E.	48yr	21 Jan	Sego
THOMAS, Lola [black]	18yr	20 Aug	Hutchinson
WARD, Fred	24yr	29 Nov	Hutchinson
WARREN, Gladdys	3	27 Jul	Hutchinson
WE[VIE?]. John	60yr	3 Mar	Haven
WELLS, Wm. B.	82yr	19 Feb	Hutchinson
WILLIAM, E. [female]	[no age given]	2 Dec	Reno County

(continued on next page)

Ancestor Chart of Kay Ann (MALLICOAT) TARM

No.		Birth	Marriage	Death
I. 1.	Kay Ann MALLICOAT.....	1940, Iowa.....	1961	
II. 2.	Darrell Delose MALLICOAT.....	1912, Iowa.....	1934.....	1977, Kan.
3.	Katherine Frances RYAN.....	1914, Iowa		
III. 4.	Vern MALLICOAT.....	1890, Iowa.....	1910.....	1965, Ill.
5.	Isabell BREUNIG.....	1888.....		1978, Iowa
6.	William Edward RYAN.....	1883, Iowa.....	1910.....	1967, Iowa
7.	Agnes Grace CAVANAUGH.....	1887, Iowa.....		1972, Iowa
IV. 8.	George MALLICOAT.....	1860, Ind.....		1929, Iowa
9.	Katherine HAYWARD.....	1866, Ill.....		1945, Iowa
10.	John BREUNIG.....	1851, Iowa		1944
11.	Anna M. ROHRER.....	1864, Ill.....		1913, Iowa
12.	James RYAN			
13.	Bridgett WELCH			
14.	Christopher Raymond CAVANAUGH.....	1848.....		1924
15.	Catherine EMMETT.....	1853.....		1928
V. 16.	James MALLICOAT			
17.	Anne FRY			
20.	Joseph BREUNIG.....	_____, GER.		
21.	Catherine BLINK.....	1830, GER		
22.	Lester ROHRER.....	_____, FRA		
23.	Sophia CASTER/KASLER.....	_____, FRA		

For further information about any of the above, contact: Mrs. Kay Ann Tarm, 43 Linksland, Hutchinson, KS 67502.

Ancestor Chart of Barbara (HOLMES) SIMPSON

No.		Birth	Marriage	Death
I. 1.	Barbara HOLMES.....	1939, Kan.....	1977	
II. 2.	William W. HOLMES.....	1914, Kan.....	1937	
3.	Mary Helen MC GUIRE.....	1917, Kan.		
III. 4.	Nathaniel HOLMES.....	1868, Ill.....	1908.....	1945, Kan.
5.	Adelaide MILLSON.....	1880, Kan.....		1972, Kan.
6.	Rollan Thomas MC GUIRE.....	1894, Kan.....	1916.....	1968, Kan.
7.	Bessie Jane HAXTON.....	1898, Kan.....		1977, Ariz.
IV. 8.	William Swanson HOLMES.....	1828, Sweden.....		1903, Kan.
9.	Karna MATTSON.....	1832, Sweden.....		1892, Kan.
10.	William MILLSON.....	_____, Mich		
11.	Sarah Ann WILLIAMS.....	_____, Iowa		
12.	William M. MC GUIRE.....	1847, Ill.....		1926, Kan.
13.	Mary Ann HILL.....	1855, Canada.....		1936, Iowa
14.	William Levi HAXTON.....	1865, Ind.....	1889.....	1939, Kan.
15.	Lizzie May NODURFT.....	1872, Ind.....		1949, Kan.
V. 24.	Andrew J. MC GUIRE			
25.	Lucinda SELLARS			
26.	William HILL			
28.	William Bennett HAXTON.....	1824.....	1846.....	1902
29.	Margaret FOOTE.....	1825		
30.	William NODURFT.....	1843.....		1924
31.	Elizabeth CRIST.....	1852.....		1915

For further information about any of the above, contact: Mrs. Barbara Simpson, P.O. Box 27731, Tempe, AZ 85282.

Vital Records of Reno County, Kansas—Book II, Deaths 1897 (continued)

Name	Age	Date	Place
WILLIAMS, Mrs. J.B.	74yr	27 Nov	Hutchinson
WILLIAMS, J.T. [male]	37yr	7 Nov	Hutchinson
WILLOW, Infant [no sex given]	2mo	2 Dec	Reno County
WILSON, Infant [no sex given]	9da	13 Feb	Hutchinson
WILSON, R.B. [male]	53yr	1 Feb	Hutchinson
WOOD, Ada	[no age]	27 Oct	Hutchinson
YEAGER, C.E. [male]	27yr	23 Aug	Hutchinson
YOUNG, Mrs. A	25yr	1 Sep	Hutchinson
YOUNG, Lydia	77yr	24 Nov	Reno County
YOUNG, W.H. [male]	36yr	16 May	Hutchinson

Grove Township

[From Reno County Directory, 1887-1888, First Biennial Volume, contributed by Lydia Streeter.]

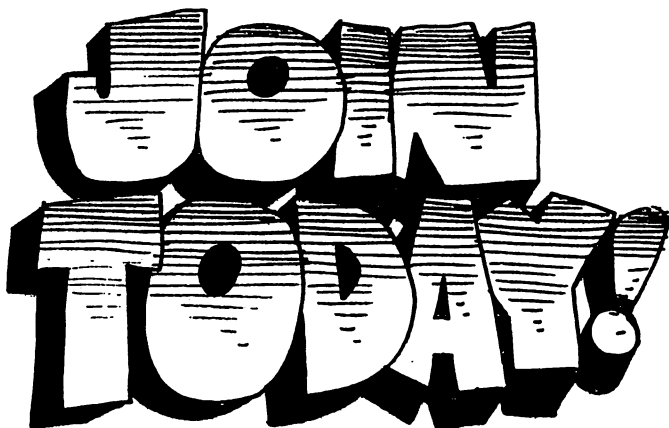
Amarine, B.R.....	Dresden	Gragg, W.E.....	Turon	Martin, H.....	Dresden	Ravenscraft, N.....	Turon
Anderson, D.....	Turon	Fragg, W.E.....	Turon	May, A.....	Turon	Reid, W.H.....	Turon
Anderson, W.....	Turon	Hancock, W.A.....	Turon	May, R.R.....	Turon	Reedy, J.W.....	Turon
Baird, J.M.....	Turon	Hancock, J.E.....	Turon	May, A.L.....	Turon	Richardson, H.....	Turon
Baker, G.E.....	Turon	Hardy, D.....	Turon	McBride, H.....	Turon	Richardson, O.T.....	Turon
Barnett, B.F.....	Turon	Harbison, G.....	Turon	McCalla, D.W.....	Jordan Springs	Schneeberger, D.....	Turon
Barnett, J.N.....	Turon	Hathaway, H.F.....	Turon	McClalland, R.W.....	Turon	Seeley, I.....	Turon
Bell, G.W.....	Jordan Springs	Hays, W.....	Turon	McMillan, J.T.....	Turon	Seltzer, O.B.....	Turon
Bell, W.S.....	Jordan Springs	Henry, Wm.....	Turon	McGinness, R.C.....	Turon	Seltzer, D.....	Turon
Bellew, N.....	Turon	Hickman, W.H.H.....	Turon	Meredith, J.B.....	Turon	Slater, G.W.....	Turon
Bowen, W.I.....	Turon	Hickman, T.W.....	Turon	Merriott, J.S.....	Turon	Smith, J.L.....	Turon
Carr, H.H.....	Turon	Hickman, K.....	Turon	Meddleton, W.R.....	Turon	Smith, J.L.....	Turon
Collins, L.I.....	Jordan Springs	Higgins, J.A.....	Turon	Moore, B.....	Turon	Snedecor, F.....	Turon
Compton, D.....	Turon	Hinds, John.....	Turon	Moorehead, A.G.....	Turon	Sorrell, J.M.....	Turon
Compton, J.A.....	Turon	Hubbart, H.S.....	Turon	Moorehead, A.....	Turon	Spillman, A.J.....	Turon
Coppedge, J.Y.....	Turon	Hinds, W.....	Turon	Moorehead, I.....	Turon	Steward, R.M.....	Turon
Cox, C.H.....	Turon	Huffman, J.R.....	Turon	Moorehead, J.....	Turon	Tippetts, I.N.....	Turon
Criswell, G.....	Jordan Springs	Hoskinson, G.M.....	Turon	Mosier, D.....	Dresden	Thatcher, J.B.....	Turon
Davis, I.M.....	Turon	Hudson, C.T.....	Turon	Nelson, A.L.....	Turon	Vanocker, M.D.....	Jordan Springs
Davis, W.N.....	Dresden	Jackson, J.....	Turon	Overton, B.F.....	Turon	Vick, L.A.....	Turon
Davis, R.A.....	Dresden	Jones, Wesley.....	Dresden	Phares, E.W.....	Turon	Walker, J.W.....	Turon
Day, W.W.....	Turon	Jones, J.W.....	Turon	Phares, E.....	Turon	Walker, J.H.....	Turon
Dickhut, C.W.....	Turon	Karns, M.....	Turon	Porter, J.J.....	Turon	Walker, J.P.....	Turon
Dickhut, O.B.....	Turon	Leeds, J.M.....	Turon	Porter, J.C.....	Turon	Walther, C.O.....	Turon
Dickson, J.S.....	Turon	Lemley, J.G.....	Turon	Potter, G.B.....	Turon	Watson, M.....	Turon
Edwards, O.....	Turon	Lemley, A.L.....	Turon	Potter, M.H.....	Turon	Watson, M.E.....	Turon
Fletcher, I.A.....	Turon	Lentz, D.....	Turon	Potter, J.B.....	Turon	Winsor, D.....	Turon
Foggle, E.M.....	Turon	Linden, H.R.....	Turon	Presby, S.B.....	Turon	Winsor, J.....	Turon
Fraizer, M.....	Turon	Maphett, I.R.....	Dresden	Prigmoore, J.L.....	Dresden	Winsor, G.R.....	Turon
Fulks, J.....	Turon						

New Members

The Reno County Genealogical Society extends a warm welcome to the following new members. Each has been asked to fill out a four-generation ancestor chart. Information from these charts will be transferred to the SURNAME FILE which is housed in the Kansas Room of the Public Library:

Mrs. William D. PAYNE
613 Menard, Riverton, IL 62561

Eric B. WILLIAMS
18807 148th Ave. S.E., Renton, WA 98058



DUES -- \$10.00 -- DUES

Turon High School Graduates

[Editor's note: The names of Turon High School's graduates, continued from the previous issue, come from the 1987 alumni booklet provided at the annual reunion of the students graduating through 1962, the last class of Turon High School before it became part of Fairfield.]

Class of 1922

CLAIRE CARLILE (STAIB)
ROBERT MESSERLI (deceased)
LLOYD REAM
CHARLES TALBERT (deceased)
GERTRUDE TIPTON (FORTNER) 1332 S. Vine, Wichita, KS 67202
ADA WHITE (THOMPSON) (deceased)
RON YATES (deceased)

Class of 1923

FERN BUNYAN (MOTT) Box 945, Yuca Valley, CA 92284
ELIZABETH EVERLY, Everly Lumber Co., Winfield, KS 67156
GEORGE GRIMBLE (deceased)
IRNE GRIMBLE (deceased)
MARGUERITE HANEY (RAINES) (deceased)
DWIGHT JONES
OLA LAMONT (deceased)
OPAL LAMONT (VINAPOL) Hilltop Manor, Cunningham, KS 67035
JOY LANHAM (VINSON) (deceased)
VIRGIL MUNGER (deceased)
MILDRED RIGGS (MARCUM) (deceased)
ADDIE BRUCE (TALBERT) (deceased)
LOUISE THACHER (BADEN) (deceased)
RITA WELCH (NESTER) 212 Post Oak Road, Wichita, KS 67206
OPAL ZINK (MASON) 1122 N. 15th, Apt. 303, Canon City, CO 81212
LUCY MESSERLI (MC KIM) 2167 Sunny Vista Drive, San Jose, CA 95128

Class of 1924

JAMES GRAY (deceased)
CORA GRABER (LAMBERSON) (deceased)

Turon High School Graduates

MARY KITSON (JORDON), Turon, KS 67583
 OTTO MARCUM (deceased)
 LORENZO SIMON, Preston, KS 67569
 KATHLEEN WALSH, 425 N. Belmont, Wichita, KS 67208
 VADA WATSON (HOSKINSON), Turon, KS 67583
 OWEN WATSON, 4277 B. Forrest de Ville, St. Louis, MO 63129
 VERA ZONGKER (KEARNS), Box 154, Haviland, KS 67059

Class of 1925

RICHARD AMERINE, 504 S. Sixth, Kiowa, KS 67070
 EVELYN BARRETT (DE SELMS) (deceased)
 CHARLOTTE EDWARDS (ALLISON) (deceased)
 MAY COLE (DEAN) (deceased)
 AMY ELLIOTT (SAMPSON), Turon, KS 67583
 HELEN ELY (CALAHAN) (deceased)
 CLAIR FUSSELL (KINLEY), 109 E. Carpenter, South Hutchinson, KS 67505
 MONA GUTHRIE (RUMFORD), South Buckeye, Stafford, KS 67578
 ERMA JULIAN (WOOD), Rte. 1, Haviland, KS 67059
 ERNEST LAMONT (deceased)
 ETHEL LEARNED (GREEN), 711 East A, Hutchinson, KS 67501
 MARJORIE MC MURRAY (MARVIN)
 CECIL MUNGER (deceased)
 ALICE OSWALT (COONS) (deceased)
 ELIZABETH RAINES (HUFF), Box 594, Sonora, CA 95370
 SARAH RAINES (JUSTICE)
 MARY REED (MYERS), Turon, KS 67583
 BYRON T. ROWELL, 1002 Tennessee, Apt. 3, Lawrence, KS 66044
 ELSIE STAIB (KTOCHAVAR)
 RUBY STRAIGHT (DECK)

Class of 1926

KENNETH ALTHAUS (deceased)
 LUCILLE AMERINE (RESINGER)
 FRANK BOSWELL, Rte. 2, Box D1, Cheney, KS 67025
 THEODORE CRAWFORD
 FLOYD ELLIOT (deceased)
 BEULAH GRAY (MILLER) (deceased)
 FRANCES GREENMAN (SAILER) (deceased)
 EVALENA HAYNES (UNRUH)
 CARROLL JONES, Star Rte. 3, Mace Meadows, Ridge Stop Pioneer, CA 95660
 GOLDIE MAE MAPHET (MC KINNEY), 319 E. Ave. D, Hutchinson, KS 67501
 LOTTIE MAPHET (ROGERS), 210 Norman Drive, Lindsborg, KS 67456
 LOREN MEADERS
 ETTA MC OSKER (ALTHAUS), 7850 Freeman, No. 344, Kansas City, KS 66112
 MILLY NIGH (STEWART), Murdock, Ks 67111
 DORA PEDERSON (DURHAM), Hearthstone Rest Home, St. John, KS 67576
 MABEL SMITH (JOLLIFF) (deceased)
 RUTH STARK (KAMP) (deceased)
 ELNORA STRAIGHT (PARSONS)
 FLORENCE STINEBURG (EDIE) (deceased)
 FLOYD ZONGKER, Box 35037, Tulsa, OK 74135

Class of 1927

LOUISE CARLILE (BOAL)
 VIRGIL COMPTON, Box 725, Green Valley, AZ 85622
 EARL ELY (deceased)
 VERNON FOULK (deceased)
 VERDA GARMAN (DUNHAM), Pierceville, KS 67868
 ELSIE MERRIOT (SIMON), Preston, KS 67569
 ALFRED MC MURRAY (deceased)
 MARY PEDERSON (KASTERKEE), 4400 S. Handley, Wichita, KS 67217
 CLEORA TADLOCK (OSWALT), 1206 Wheatland Drive, Hutchinson, KS 67502
 EVELYN ZINK (BARR)

(continued in the next issue)

Items for Sale

Cemetery Records of Reno County
 Burials from 1860s through 1978.
 \$20 plus \$1.75 postage and handling.
 Kansas residents add \$1.10 sales tax.

Early Marriage Records of Reno County
 1872-1913
 \$20 plus \$1.50 postage and handling.
 Kansas residents add \$1.10 sales tax.

Guide to Reno County Records \$1.50

Surname File Index 2.50
1985 Supplement 1.50

Charts:

Ancestor Chart	.05
Census Worksheet	.05
Family Chart	.05
Additional Children Chart	.05
Federal Census Searched Chart	.05
Census Worksheet Packet	.50
Family Chart Packet	1.00
Ancestor Chart Packet	1.00
Beginner's Packet	1.00
Additional Children Packet	1.00
15-Generation Ancestor Chart	1.00
Notepads—ruled, unruled	1.00

(Add \$1.00 postage and handling for each item ordered over \$1.00.) Kansas residents add 5½ percent sales tax.

Send orders to Reno County Genealogical Society,
 P. O. Box 5, Hutchinson, KS 67504-0005.

RENO COUNTY GENEALOGICAL SOCIETY
 THE SUNFLOWER, a quarterly publication
 Arless [MOSE] EILERTS, Editor
 P.O. Box 5
 Hutchinson, KS 67504-0005

Non-profit Organization
 U.S. Postage Paid
 Hutchinson, Kansas
 Permit No. 171

ADDRESS CORRECTION REQUESTED

The Sunflower Index—Issues 1, 2, 3, and 4—Vol. IX

[Editor's note: This index covers four issues of the quarterly: May 1987 (Issue 1, pp. 1-12), August 1987 (Issue 2, pp. 13-24), November 1987 (Issue 3, pp. 25-36), February 1988 (Issue 4, pp. 37-48). The index does not include names from lists that were arranged alphabetically in the quarterly.]

- A
- ADAMS, James Alexander, 9; Lucy B., 9
- ALEXANDER, George, 30
- ALLEN, Donna (Johnson), 2, 14, 26, 38
- ALLISON, Charlotte Edwards, 48
- ALTHAUS, Etta McOsker, 48; Kenneth, 48; AMERINE, Richard, 48; Lucille, 48
- ANDERSON, Mary, 40
- ANDSAGER, Forrest, 23; Virginia, 12; Wallace, 24
- ANSCHRIFT, Neuse, 14
- APPLEGATE, Maxine, 12
- ARMOUR, Thomas, 30
- ARMSTRONG, Jacob, 23
- ASHCRAFT, Delma, 10
- ATHEY, Esther Peggy, 38
- AXTELL, Blanche, 30
- B
- BADEN, Louise Thacher, 47
- BALLINGER, J.L., 23
- BANGHART, George, 9; Jacob, 9; Michael Jefferson, 9; Sarah, 9
- BARBER, Nathaniel, 9; Susannah, 9
- BARGDILL, Homer, 38
- BARGER, Margaret Jane, 21
- BARR, Evelyn Zink, 48
- BARRELBURRELL, A.K., 28
- BARRETT, Catherine, 30; Charles H., 30; Evelyn, 48; J.M., 30; Louise, 39; M.L., 30; Rose J., 30
- BARTON, Zora, 10
- BAUMER, Beverly, 13, 20
- BAY, James, 23; Mary, 23
- BELDEN, C. Robert, 15
- BELL, Betty (Boyd), 24
- BENTLEY, James L., 30; Minnie, 30; Nancy Smith, 30
- BIRCHENOUGH, Hazel May, 9; Matthew, 9; Walter, 9
- BLINK, Catherine, 48
- BLOSSOM, O.P., 33
- BOAL, Louise Carlile, 48
- BOCKSTRUCK, Lloyd Dewitt, 3
- BOLBY, Delia, 10
- BOLLIN, Fred, 23
- BOND, Ward, 15
- BOONE, Daneil, 27
- BOSWELL, Frank, 48
- BOWEN, B.F., 30
- BOWSER, Ettie May, 23
- BOYD, Mary Ellen (Turner), 10; Ruth, 10; William, 10
- BRADDOCK, General, 15
- BRANDOW, James, 20; James C., 20
- BRAY, Marian Sydne, 38
- BREIDENSTEIN, Joan (Lindahl), 24
- BREMER, Rondal, 14
- BREUNIG, Isabell, 46; John, 46; Joseph, 48
- BROCK, Almira, 23
- BROSSMAN, Schuyler C., 21
- BROWN, Dot, 39; Esther (Nusser), 24; George W., 23; Melvin, 12, 24; Wiley, 23
- BRUER, John, 24
- BURDICK, Clifford, 35
- BURLING, Robert, 28
- BUSKIRK, Mary, 9
- C
- CALAHAN, Helen Ely, 48
- CANNING, John, 24
- CAREY, Albert, 17; Almeda (Mrs. P.W. Clayton), 17; Arthur, 17; Bertha (Mrs. Harvey Crawford), 17; Charles, 17; Claude, 17; Edith (Mrs. Stanley Winchester), 17; Elizabeth (Mrs. Isaac Palmer), 17; Emerson, 3, 13, 16, 17; Emerson Jr., 17; Emma (Mrs. Burrett Hanks), 17; Eva (Mrs. Waverly Albright), 17; Howard, 17; Marietta (Mrs. Chas. Nelson), 17; Maud (Mrs. J.J. Brownlee), 17; Nancy Jane (Bundy), 16; Rosa (Mrs. James Kirk), 17; Samuel, 16, 17; Susan (Mrs. E. Thomas), 17; Wm. D.P., 17
- CARLILE, Claire, 47; Louise, 48; Mable (Staib), 38
- CARR, H.H., 33
- CARRINGTON, James, 23
- CART, Lavonne (Prettyman), 12
- CARTER, Mr. Ted, 27
- CASTER/KASLER, Sophia, 48
- CAVANAGH, Agnes Grace, 48; Christopher Raymond, 48
- CECIL, Chas, 28; Dick, 28; Lom, 28
- CHAMBERLAIN, Anna Mary, 21
- CHAMBERS, Mrs. Shelia, 27
- CHANCELLOR, Kathleen (Kathy Beane), 2, 14, 28, 38
- CHARLETON, Betty (Canning), 12
- CHILDS, Chalmers, 12; Donald, 24; Robert, 23; Rosalie, 24
- CHRISTY/CHRISTIE, James, 9
- CLEVENGER, Anna B., 41
- COLE, _____, 21; May, 48; Renee, 35
- COLLINGWOOD, Abner, 42; Dan, 43; Daniel F., 42; James, A., 42; Jane E., 42; John A., 42; Joseph, 42; Mary, 42-43; Thomas, 42; William James, 42
- COMPTON, Rose (Holmes), 38; Virgil, 48
- CONN, R.E., 16
- CONNER, Aaron, 33
- CONOWAY, Charles, 21; Harry, 21; Margaret, 21; Orville, 21
- CONSTANT, Hiram, 5
- COOK, Jolene (Mitzner), 2, 14, 28, 35, 38, 40
- COOMBS, Emma, 23
- COONS, Ruth (Epperson), 24
- COOTER, C.W., 23
- CORY, N.B., 23
- COUCH, Margaret, 21
- COURTRIGHT, Miss Juliet, 28
- COX, Claude, 10; Howard, 10; Lawrence J., 2, 14, 28, 38; Mrs. Howard (Vergie), 10
- CRABBS, Abraham B., 30; Albert E., 30; Catherine Bolman, 30; Jacob M., 30; Jennie, 30; John L., 30
- CRAMPTON, H.H., 23
- CRIST, Elizabeth, 48
- CROMWELL, _____, 20
- CRUM, Patricia (Metcalfe), 24
- CULVER, Opal (Matlack), 2, 14, 28, 32
- CUMMINS, John, 27; Sarah, 27
- CUSHING, Harriet (Helmick), 2, 14, 28, 38, 40
- D
- DAVIDSON, Fred, 24; Paul, 12; Veima (Baughman), 12
- DAVIS, Laura Mae (Smith), 24; Rev. D.N., 10
- DAVISSON, Claire, 23, 24; Evelyn (Wright), 24
- DE LEPT, Jean/Jane Bell McLean Fraser, 15
- DEAN, Albert, 23; May Cole, 48
- DEER, James, 23
- DE GRUSON, Gene, 40
- DEMORET, Mrs. S.G., 42-43
- DENNING, Adeline, 21; Alexander, 13, 21; Alvin, 21; Anna Eliza, 21; Anna Eliza, 21; Caroline, 21; Charles J., 21; Emmett, 21; Emmett E., 21; Flora, 21, James, 21; Jane, 21; Jasper, 21; John, 21; John A., 21; Lucy, 21; Margaret (Couch), 13, 21; Mary, 21; Mary Jane, 21; Montford, 21; Newton, 21; Paul W., 21; Percy, 21; William, 21; William A., 21; William Harry, 21
- DE SELMS, Evelyn Barrett, 48
- DEVORE, Martha J., 21
- DICKASON, J.L., 33, J.S., 33
- DICKENSON, Charles, 24; Margaret, 12
- DICKERSON, Robert D., 9
- DICKINSON, James, 12
- DINGMAN, Mary, 23
- DODGE, L., 23
- DRUMMOND, Joyce, 27
- DUBBIN, Elizabeth, 9
- DUFFY, Gwen F., 35
- DUNHAM, Verda (Garman), 48
- DUNN, Leo, 38
- DUNNING, F.L., 33
- DURHAM, Dora (Pederson), 48
- E
- EATON, J.E., 30
- EDIE, Florence (Stineburg), 48
- EDWARDS, Charlotte, 48; Dena, 36
- EILERTS, Ariess (Mosser), 2, 3, 4, 12, 14, 15, 20, 24, 28, 27, 36, 38, 39, 41, 42, 48; Don, 15
- ELIOT, D.M., 28
- ELLIOTT, Amy, 48; Elsie (Schweizer), 38; Floyd, 48
- ELY, Chester, 38; Earl, 48; Harold, 36; Helen, 48; Lawrence, 38
- EMLEY, Sarah, 9
- EMMETT, Catherine, 48
- EMPEY, G.T., 28
- ESLINGER, Jo, 35
- EVANS, Naomi (Davisson), 24
- EVERETT, Thomas, 33
- EVERLY, Elizabeth, 47
- EWING, Mr. _____, 28; Jasper, 23; Solomon, 23; William Chesley, 23
- F
- FARNEY, Rosetta, 24
- FEESE, Fern (Welch), 12; Justin, 12; Mason, 12; Mrs. Thelma (Humphries), 15; Winfred, 12
- FERNIE, Dr. _____, 3
- FESLER, Charles, 24
- FILBERT, Ruth (Hair), 2, 14, 28, 38
- FILEY, Mrs. Jane, 28; W., 28
- FLETCHER, Cora, 23
- FOOTE, Margaret, 48
- FORNEY, Hubert, 38
- FORTNER, Gertrude Tipton, 48
- FOULK, Vernon, 48
- FOX, Rachel C. (Tarry), 27
- FRASER, George, 15; John, 15; William, 15
- FRAZER, Daniel, 15
- FRENCH, Mrs. Marson H., 40
- FRY, Anne, 48
- FULKS, Josephine (O'Connor), 38
- FULLER, Amy Lynch, 30; Daniel E., 30; Emma E., 30
- FULLERTON, Marie (Hooker), 24
- FUSSELL, Clair, 48
- G
- GADDERT, Mary, 12
- GANTZ, Allene (Haas), 24; Donald, 24
- GARDNER, Earl, 12; Eugene, 12; Glenn, 12; John Leroy, 23; Roy, 2, 13, 26, 38, 40
- GEESLING, Gertrude (Thacher), 38
- GILL, John L., 23
- GILLETTE, F.E., 30
- GISICK, Donald, 24; Florence (Brown), 12; Gene, 24; Ida Mae (Hooker), 24
- GONDER, Pearl (Barber), 38
- GORDLEY, Lillian M., 30
- GOULD, Jay, 16
- GRABER, Cora, 47
- GRAHAM, J.L., 33
- GRAY, Beulah, 48; James, 47; J.M., 23; Paul, 38
- GREEN, Ethel (Learned), 48
- GREENMAN, Frances, 48
- GRESHAM, J.H., 23
- GRIEVE, Delna (Martin), 38
- GRIMBLE, George, 47; Irene, 47
- GRISWOLD, Esther, 41
- GROVER, Mr. and Mrs. Edgar, 35
- GUMP, A.J., 10; Anna, 10; David P., 10; Della A., 10; Porter, 10; Ray, 10; Sarah, 10; Zora, 10
- GUTHRIE, Mona, 48
- H
- HAAS, Allene, 24
- HAGER, SUE, 35; Sue E., 10
- HALL, Norman, 24
- HAND, T.B., 23
- HARLOW, Vincent, 20
- HARNESS, Isaac, 39; Mary E., 39
- HARRIS, Elizabeth Sneesby, 21; James, 21; Jerusha, 9; J.O., 33; Thomas, 23
- HATTON, Becky, 40
- HAWKINS, Kitty, 23
- HAXTON, Bessie Jane, 48; William Bennett, 48; William Levi, 48
- HAYES, Jesse M., 30
- HAYNES, Evalena, 48
- HAYWARD, Katherine, 48
- HEATH, Dr. John W., 5
- HENDERSHOT, Winnie Brock, 2, 14, 38, 38
- HENDRIXSON, Verne, 35
- HENDRY, Beverly, 35
- HESTER, Frances Hill, 12; Russell, 12; Scott, 12
- HICKSON, Elybeth, 9
- HILL, Frances, 12; Mary Ann, 48; Muriel, 24; Velma, 23; William, 48
- HINMAN, Dorothy, 30; Dorr, 30; Helen, 30; Milton E., 30
- HOFFMAN, W.L., 23
- HOGG, Mr., 27
- HOLCOMB, Theron, 24
- HOLMES, Anna L., 35; Barbara, 48; Nathaniel, 48; William, 48; William Swanson, 48
- HOOVER, Fern, 24; Mae, 24; Myrtle, 24
- HOPKINS, _____, 23
- HORNEY, Vernon, 12
- HOSKINSON, Owen, 48; Vada Watson, 48
- HOTTEN, John C., 20
- HOUSTON, Ella Rae Brown, 24
- HOWARD, Inez, 40
- HOWELL, P., 28
- HOYT, Orval, 35
- HUFF, Elizabeth Raines, 48
- HUNT, J.J., 23
- HUNTER, Mrs. Marjorie, 10
- HURST, Mary, 9
- J
- JACOBUS, Donald, 39
- JESSUP, Kenneth, 12
- JOHNSON, _____, 23; Eugene, 21; Fred, 21; James, 21; Nila, 21; Susan, 2, 14, 28, 38; Thomas, 23; Vesta, 21
- JOLLIFF, Mabel Smith, 48
- JONES, Carolyn Ann Smith, 22; Carroll, 48; Dwight, 47; Edith Duffin, 2, 14, 28, 38; James Leo, 22; J.E., 33
- JORDAN, Mary Kitson, 48
- JULIAN, Erma, 48
- JUSTICE, Sarah Raines, 48
- K
- KAMP, Ruth Stark, 48
- KASLER/CASTER, Sophia, 46
- KASTERKEE, Mary Pederson, 48
- KEARNS, Vera Zongker, 48
- KEELER, La Donna Davisson, 24
- KELLER, Leona Lois, 2, 14, 26, 38
- KELLOGG, Mrs. Vic (Lenora Todd), 10
- KELLY, Michael, 40
- KELSEY, R.D., 23
- KERSHNER, Amanda Jane Harris, 21; Daniel Hicks, 21
- KIDWELL, Sharon, 13, 16
- KIRKPATRICK, Andrew, 9
- KIMPLE, Anna Mae Turner, 12
- KING, Minnie Denning, 21
- KINLEY, Clair Fussell, 48
- KIRKPATRICK, Grant, 23
- KISING, J.B., 23
- KITSON, Mary, 48
- KOESTEL, Clifford, 10
- KOONS, Hanan, 12
- KRANTZ, Robert A., 3
- KRENZIN, Ernest, 12
- KTOCHAVAR, Elsie Staib, 48
- L
- LAMBERSON, Cora Graber, 48
- LAMONT, Doris Truitt, 36; Ernest, 48; Ola, 47; Oua Strobel, 36; Opal, 47
- LANHAM, Joy, 47
- LAWSON, Herbert Noble, 23
- LAYMAN, Arthur, 30; Della, 30; Preston, 30; Roscoe C., 30; William, C. 30; Zora Mabel, 30
- LEARNED, Ethel, 48
- LEE, Ellen Towse, 23
- LEEMLEY, Alex, 35
- LIGGETT, Dora Lorena, 21; Frank Arthur, 21; Harry, 21; Jane Stackhouse, 21; Miles William, 21; Samuel F., 21; William McDonald, 21
- LINCOLN, Abraham, 16
- LINDBURG, Maxine Parker, 2, 5, 14, 28, 38
- LONG, M.A., 23
- LORING/LORIN, Sarah, 9
- LOTSPEICH, Laura Ream, 38
- LOVELACE, Lord, 21
- Mc
- MC CLAVE, John Stevenson, 9; Stevenson, 9; Thomas, 9; William, 9; Zoe Tamson, 9
- MC COLLUM, F., 33
- MC CULLA, George, 23
- MC ELHANEY, Vera Singleton, 12
- MC GUIRE, Andrew J., 46; Mary Helen, 46; Rolian Thomas, 48; William M., 48
- MC KIM, Lucy Messerli, 47
- MC KINNEY, Goldie Mae Maphet, 48
- MC LAUGHLIN, Ruth, 35
- MC MURRAY, Alfred, 48; Marjorie, 48
- MC NABB, Elizabeth Ruga, 30; Harriet, 30; John, 30
- MC OSKER, Etta, 48
- M
- MACKLIN, Willie, 10
- MALERNEE, Ezre, 21; Lydia Burton, 21; William, 21
- MALLICOAT, Darrell Delose, 46; George, 46; James, 48; Kay Ann, 48; Vern, 48
- MANGELS, Harold, 24
- MAPHET, Goldie Mae, 48; Lottie, 48
- MARCUM, Mildred Riggs, 47; Otto, 48
- MARTIN, Ernest, 38; Ethel, 38; James, 38; J.F., 23; John, 23
- MARVIN, Marjorie McMurray, 48
- MASTELLAR, Aaron, 30; D.H., 30; Elizabeth Dresker, 30; Guy, 30; Josephine, 30; May, 30
- MATTSON, Karns, 46
- MAY, Emma A., 30
- MEADERS, Loren, 48
- MEEK, Van, 36

MERRIOT, Elsie, 48
MESSERLI, Emma Lou Yoder, 36;
Lucy, 47; Robert, 47
MIDDLETON, Arthur, 20
MILLER, Beulah Gray, 48; C.A.,
33; Carolyn Burdette, 2, 14,
22, 26, 38; Danny, 2, 14, 26,
38; James, 41; John, 41
MILLS, Adam, 15; Enos, 15
MILLSON, Adelaide, 46; William,
46
MOORE, Deloris Ehly, 2, 14, 22,
26, 38; Mr., 10
MORGAN, Betty, 2, 7, 14, 26, 38;
L.E., 36; Onis, 36; William Y.,
30; W.Y., 17
MORRIS, Lewis, 20
MORTON, Joy, 16
MOSER, Mary Ann Fraser, 15;
Reuben, 15
MOTT, Fern Bunyan, 47
MUCHMORE, Garrett, 9; Sarah
E., 9
MUNDY, Angus, 40
MUNGER, Cell, 48; Virgil, 47
MYERS, Mary Reed, 48

- N -

NEELEY LaRita, 39
NEILL, Jacob, 23
NESTER, Rita Welch, 47
NEWTON, Mrs. Clyde E., 35
NICHOLS, F.M., 23; Joyce, 35
NIGH, Millie, 48
NIXON, Baunita Zoe Temple, 1, 9
NODURST, Lizzie May, 46;
William, 46
NUSSER, Arthur, 24; Vera, 24;
Wilford, 12

- O -

OSWALT, Alice, 48; Cleora
Tadlock, 48
OYLER, Dorothy, 15
OZBUN, Georginna, 9

- P -

PAINE, Carolyn, 41
PALICZ, Marilyn Prettyman, 12
PALMER, Raymond, 12, 23;
Virginia Andsager, 23
PARSONS, Elnora Straight, 48
PATRICK, Hannah, 9; Samuel, 9
PATTERSON, Julius E., 10, 27
PAYNE, William, 46
PEDERSON, Mary, 48
PETERSON, Malinda, 38; Mrs.
William, 40
PELTON, John, 9; Mary, 9;
Samuel, 9
PETTY, Judie Fox, 27
PHILLIPS, Doris, 35
PIELOW, Robert, 24
PLETT, Aganetha, 15
PLOUGH, Sheridan, 30
POLEN, Joshua, 21
POTTER, M.H., 33
POULTON, Katherine Reed, 36
PRETTYMAN, Nona, 24
PROCTOR, Alta Engler, 2, 14, 26,
38
PURCELL, Jayne Koepke, 2, 14,
26, 38
PURDY, H.H., 28
PUTTERBAUGH, Anna May, 16,
17

- Q -

QUIRING, Virginia, 40

- R -

RAINES, Elizabeth, 48;
Marguerite Haney, 47; Sarah,
48
RANDLES, W.S., 10
RANSOM, Alice, 23
RAYL, Alvina Farney, 24
REAN, Lloyd, 47
REED, Mary, 48
RENNER, Lucille Hunt, 12
RESINGER, Lucille Amerline, 48
RICE, Hannah, 9
RICHARDSON, Ella, 23; William,
23
RICKETT, John, 23
RIGGS, Mildred, 47; Nathan
A., 23

RINEHART, Phyllis Alber, 23
ROACH, Dallas, 24
ROGERS, Lottie Maphet, 48;
M.C., 28
ROHER, Anna M., 46; Lester, 46
ROPP, Alexandria Joseph, 27;
David Newcomer, 27
ROSE, Hazel, 15
ROSENBLAD, Helen Streeter, 41
ROWELL, Byron T., 48; Ruther-
ford R., 36
RUMFORD, Mona Guthrie, 48;
James, 46
RUSH, Nadine Phillips, 12
RYAN, Katherine Frances, 48;
William Edward, 46

- S -

SAILER, Francis Greenman, 48
SAMPSON, Amy Elliott, 48
SAVAGE, John, 9; Susanna, 9
SCHARTZ, Treva, 35
SCHROCK, Elinor, 12; Gerald, 24;
Richard, 24
SCOTT, J.H., 33
SEARS, Mrs. Amanda J., 23
SELLERS, Lucinda, 46
SENTNEY, Mrs. Ken, 17
SHANK, C.M.C., 33
SIEBERT, Douglas, K., 15; Jacob
Plett, 15; Johann, 15
SIMMS, La Rita Canning, 12
SIMPSON, Barbara Holmes, 46
SIMON, Elsie Merriot, 48; Loren-
zo, 48
SINCLAIR, Jesse, 23
SINGLETON, Glen, 23
SLACK, Samuel, 23
SLEEPER, Robert A., 35
SMEDLEY, R.S., 33
SMITH, John, 9; Lawrence N.,
12, 13; Lillian, 24; Mabel, 48;
Mary, 9; Sonja, 35
SPANIOL, Jimmy, 12; Max, 23
SPONSLER, Alfred L., 30; John
L., 30; Lewis, 30; Maria
Wolfe, 30
SPROUT, Eileen, Herman, 36
STAIB, Clare Carlile, 47; Elsie, 48;
Firman, 38; Harry, 36
STANSEL, Lynn, 2, 14, 26, 38;
Pam Thompson, 2, 14, 26, 38
STARK, Ruth, 48
STEINBAUR, Max, 38
STEVENS, J.F., 23; J.T., 23
STEVENSON, John, 9; Susanna,
9
STEWART, Millie Nigh, 48
STINEBURG, Florence, 48
STRAIGHT, Elnora, 48
STREETER, Lydia Hewitt 2, 3, 4,
14, 26, 33, 38, 40
STROHMEYER, Anna, 10;
Catherine, 10; Dora, 10;
Gottlieb, 10; Henry, 10;
Margaret, 10; Nora, 10;
Sarah, 10
STROUP, Mrs. Robert E., 35
SWEN, Asa, 10

- T -

TADLOCK, Cleora, 48
TALBERT, Charles, 47; Addie
Bruce, 47; Marguerite Hyder,
36
TARM, Kay Ann Mallicoat, 48
TAYLOR, Elizabeth, 36; James,
38; J.E., 28; Marian A., 10, 27;
S.B., 35; Virginia Meek, 36
TEETER, W.L., 23
TEGARDEN, Glen, 36
TEMPLE, Baunita Zoe, 8; George,
9; George L., 9; Melvin Or-
ville, 9; Robert Lee, 9
THACHER, Louise, 48
THARP, Leonal, 38
THODE, Estel, 24
THOMAS, Lewis M., 4; Louis M.,
23
THOMPSON, Ada White, 47
TILS, Joy Yust, 12
TODD, J.P., 10
TREMBLEY, J.S., 30
TROUTT, Albert L., 23
TRUITT, Lamar, 12
TUNELL, Stephen, 23

- U -

ULMER, Bette Jean, 23; J.C., 2
UNRUH, Evalena Haynes, 48
UPDEGRAFT, Mrs. M.E., 42

- V -

VAN BUSKIRK, Peter, 9
VAN V_____, Jane M., 9
VASSALL, Judith, 20; William, 20
VINAPOL, Opal Lamont, 47
VINCENT, Arlene, 2, 10, 14, 15,
23, 26, 27, 38, 39
VINSON, Joy Lanham, 47
VOLLMERHAUSER, Friedrich R.,
14
VOSE, Susan, 23

- W -

WAKEFIELD, Clara, 35
WAKJERM, R., 33
WALKER, Evelyn Geist, 12
WALSH, Kathleen, 48
WASHINGTON, Colonel, 15
WATSON, Aaron, 9; Anne, 9;
George H., 23; James H., 23;
Lawson, 36; Margaret Peal,
38; Vada, 48
WELCH, Bridgett, 46; Rita, 47
WERNER, Freda M., 35
WHEELER, Earl, 12; Emma, 23;
Esther, 40
WHITE, Ada, 47; Anna Prettyman,
24; James, 36; Marion, 12;
Peregrine, 20; Resolved, 20
WIDNER, E.E., 16
WILLIAMS, E.R., 33; Eric B, 46;
George, 23; Sarah Ann, 46
WILLISON, Virginia Prettyman,
23
WILSON, Sarah S.D., 23; S.J., 23
WINTHROP, Henry, 20; John, 20
WOLLMERSHAUSER, _____,
38
WOOD, Edward Benjamin, 27;
Erma Julian, 48; Victor C., 27
WOODWARD, George W., 5
WRIGHT, Evelyn, 23
WUTHNOW, Betty, 35

- Y -

YAGGY, Edward E. Jr., 3; Laura,
1, 3
YATES, Angella, 24; Grace Stark,
36; Ron, 47
YOUNG, Rev. _____, 42

- Z -

ZIMMERMAN, Joseph, 27;
Kristina/Christina, 27
ZINK, Evelyn, 48; Opal Mason, 47;
Ruby Reed, 36
ZONGKER, Floyd, 48; Guy, 36;
Vera, 48