



# ***THE SUNFLOWER***

---

VOLUME VII, NUMBER 2

A Quarterly Publication

MAY 1985

---

IN THIS ISSUE

- 2 Officers and Committee Chairmen  
RCGS Information  
President's Message
- 3 Calendar of Events  
... The Serendipity Genealogist
- 4-5 Plat Map of Nickerson
- 6-7 Early History of Nickerson, Kansas  
— by Arless (MOSER) EILERTS
- 8 Degrees of Cousinship
- 9-10 Reno County Deaths—1890
- 11 Queries  
Membership Changes
- 12 Announcements  
Information Exchange  
Items for Sale—RCGS

**OFFICERS for 1985-86**

|                                 |                         |          |
|---------------------------------|-------------------------|----------|
| <b>President</b>                | Lydia (HEWITT) STREETER | 662-1103 |
| <b>Vice-President</b>           | Roy GARDNER             | 662-8192 |
| <b>Recording Secretary</b>      | Ruth (HAIR) FILBERT     | 663-2804 |
| <b>Corresponding Secretary</b>  | Leona (LEIS) KELLER     | 662-7401 |
| <b>Treasurer</b>                | Everett WELLS           | 662-7852 |
| <b>Immediate Past President</b> | Garland F. HENSON       | 665-5003 |

**STANDING COMMITTEE CHAIRMEN**

|                                  |                            |          |
|----------------------------------|----------------------------|----------|
| <b>Consultant</b>                | Malinda (CROTTS) PETERSON  | 663-3453 |
| <b>Education</b>                 |                            |          |
| <b>Historian</b>                 | Harriet (HELMICK) CUSHING  | 662-0738 |
| <b>Membership</b>                | Edith (DUFFIN) JONES       | 662-8922 |
| <b>Obituary File</b>             | Alta (ENGLER) PROCTOR      | 665-5966 |
| <b>Program</b>                   | Maxine (PARKER) LINDBURG   | 663-3968 |
| <b>Projects</b>                  | Everett WELLS              | 662-7852 |
| <b>Publicity</b>                 | Dorothy (RABUN) RAYL       | 663-3176 |
| <b>Quarterly Editor</b>          | Arless (MOSER) EILERTS     | 662-5714 |
| <b>Research</b>                  | Arlene VINCENT             | 662-8693 |
| <b>Sales (Forms)</b>             | Lynn STANSEL               | 663-8678 |
| <b>Speakers Bureau</b>           | Raymond STEWART            | 663-5379 |
| <b>Special Account Treasurer</b> | Roy GARDENER               | 662-8192 |
| <b>Surname File</b>              | Carrolyn (BURDETTE) MILLER | 669-9757 |

**Ways and Means**

**Hutchinson Public Library**  
901 N. Main Street  
Hutchinson, Kansas 67501

**Library Hours**  
Monday through Friday 9 a.m.-9 p.m.  
Saturday 9 a.m.-6 p.m.  
Sunday 1 p.m.-5 p.m.

**Reno County Genealogical Society**

The Reno County Genealogical Society of Hutchinson, Kansas, was founded in 1978 for the purpose of fostering genealogical research, promoting the exchange of information and encouraging the deposit of genealogical and historical materials in established libraries and archives.

Membership in the Reno County Genealogical Society is open to anyone interested in genealogy. Dues are \$5.00 per year single membership and \$7.50 per year family membership. All dues are paid at once for the period of 1 April 1985 to 31 March 1986.

Donations and gifts to the society are tax deductible.

Meetings are held on the third Monday of each month (except December) in the auditorium of the Hutchinson Public Library, 9th and Main, 7-9 p.m.

The quarterly publication of the Reno County Genealogical Society, *The Sunflower*, is mailed in February, May, August and November. The staff welcomes the contribution of records and stories pertaining to genealogy and history.

**Address Change?**

If you plan to change your address, please notify the society in advance. Our quarterly is mailed at a special rate of postage and the post office will not forward any with the wrong address. They throw them away.

It is a huge task to keep the mailing list up to date and we need your help. **Please tell us when you change your address.** Thank you.

**Presented to RCGS**

The *Kingman Public Library Genealogical Collection Bibliography* compiled 1980 by Letha Mitchell, Genealogy Librarian, has been presented to the Reno County Genealogical Collection by the compiler.

**President's Message**

Instead of putting up my feet and relaxing, I am writing a note as your president for another year. This is not quite what I had intended, but society members had a different plan for me.

We have a good crew. Several are new at their jobs and are busy becoming orientated and getting organized. I am happy to have such capable persons on the staff.

We still need some committee chairmen and workers, so when you are called, please, respond favorably. The success of every society is due to the willingness and efforts of all its members.

We are looking forward to a good year with your support.

—Lydia Streeter

## RCGS Calendar

- May 20 Problems and Solutions**  
Bring your problems and receive help.  
\* \* \* \* \*
- June 7-8 Kansas Council of Genealogical Societies**  
Hosted by the Barton County Genealogical Society.  
\* \* \* \* \*
- June 17 Doris Dale, Church of Jesus Christ of Latter Day Saints**  
Preparation for research in Salt Lake City and in libraries outside our immediate area.  
\* \* \* \* \*
- July 15 Joyce Roberson, Daughters of the American Colonists**  
In the program Joyce, who is descended from several early Rhode Island governors, will also talk about a trip she made to Rhode Island.

## Numbering of Newsletter

In case you noticed that this newsletter has exactly the same number as the one which came out in February, you're right. We did it deliberately to get the newsletter on the same fiscal basis as the society itself.

This will be remembered as the volume that had five issues, instead of four. (Maybe it will become a collector's edition.)

You have our solemn promise that the August edition will be number 2 for the year.

## Editor's Note

As you may have noticed, this newsletter has a new editor. The former, very competent editor, Jayne Purcell, has passed on some very useful tips on the production—for which we are most grateful. We hope that she will be kind enough to continue to lend us her valuable assistance and advice.

In fact, we will need help from all the members of the society. First, if anyone has an interest in writing, researching, production—in short, any part of the process—please contact Arless Eilerts, 662-5714 (after 5 on weekdays).

Second, we welcome any suggestions on stories, features, focuses, historical data, etc. that the members of the society would like to see in the newsletter.

Please call Arless Eilerts or write to her at 3101 Curtis Drive, Hutchinson, Ks. 67502 with your suggestions.

# The Serendipity Genealogist

by Arless Eilerts

I don't know how others became hooked on genealogy, but my addiction is a product of serendipity—pure and simple. A second cousin I had never met asked me to write a biography of my grandfather for a sort of old settlers' book for Osborne County.

She had done most of the work, but verifying and correcting her material sent me through the family keepsakes and started correspondence with older members of my family. Serendipity—a perfectly nice word meaning happy chance—was at work.

Once the easy part of tracing the family lines has been done, the thrill of discovering the clue leading to the elusive ancestor is always promised in the next deed read, the next letter received, or the next distant cousin tracked down.

In the summer of 1984, while reading deeds in the Schuylkill County Courthouse in Pottsville, Pa., I found information on the heirs of my great-great-great grandfather Michael Moser. I was elated.

Then I absently glanced at the next deed to find it listed Michael's heirs again and tied him back two generations to the original immigrant in 1728. Serendipity! To think that I might not have seen that next deed since neither the grantor nor the grantee was a Moser.

Another time, acting on a hunch, I wrote to a woman who had sent information to the Moser newsletter. Nothing in her information seemed related to mine, but I wrote anyway. We discovered the same Michael Moser is a shared ancestor.

This generous third cousin once removed sent me her files to copy, including the early records of the Little Wills Creek Lutheran Church which my family attended. Serendipity, again.

Working on a different line, I wrote to the St. Joseph, Mo., Public Library asking if a history of Buchanan County existed which mentioned Elijah G. Commins. The reference librarian promptly sent me a xerox copy of a page which placed the Commins family in Gower, Mo., by 1829 and moved my search back a generation by naming Eli's father.

Serendipity wasn't through yet in that case; the paragraph above the marked one related to the Elliotts—the family of Sarah Elliott Commins, Eli's wife.

My latest serendipity came in a letter from Maryville, Mo., from Mary Ann Watkins Lyle. My letter to the Nodaway County Clerk asking about documents relating to Lemuel Watkins (my great-grandfather) had been referred to this lady—also a great-granddaughter of Lemuel. Just when I was ready to give up after a two-year period of trying to get a break—there it was.

Serendipity is not something the genealogist relies on. It is the reward that comes to people who keep digging when anyone else would have given up.

1902

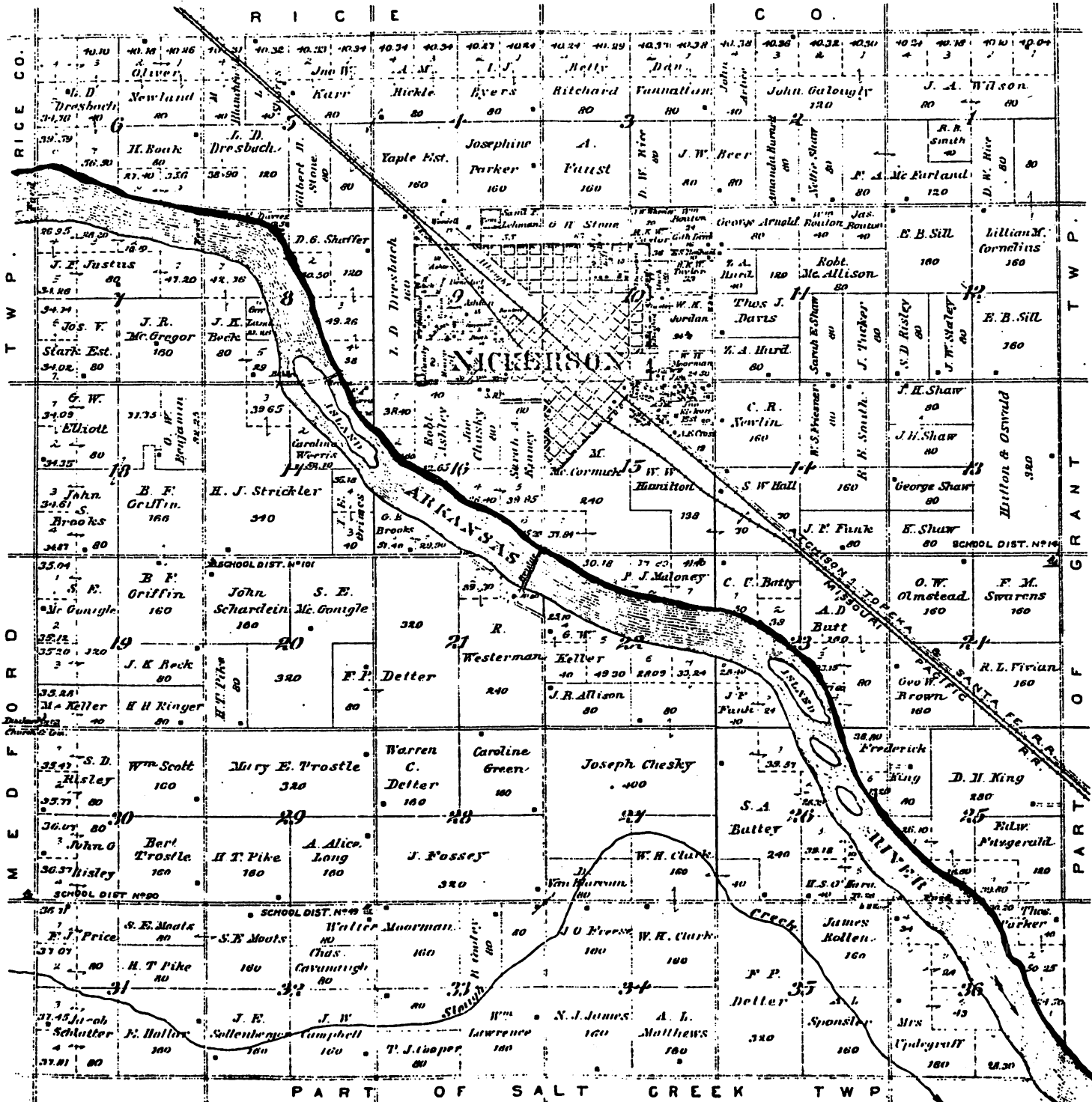
PLAT OF

# GRANT AND SALT CREEK

Scale 2 Inches to the Mile.

Township 22 South, Range 7 West.

of the 6th Principal Meridian





# Early History of Nickerson

There is no question that the railroad was one of the forces which helped settle the area west of the Mississippi River. It is also to the railroad that the town of Nickerson in Reno County owes much of the credit for its existence.

Another factor, of course, was the Civil War and the restless surge westward which followed it. Kansas was admitted to the union as the 34th state on January 29, 1861, just 28 days after President Abraham Lincoln had signed the homestead act. The eastern part of the state was settled earlier than the wilder and more untamed Kansas prairies to the west.

By 1867, the pioneers had begun to move into Central Kansas.<sup>1</sup> However, the big push for settlement came in 1871 when the Atchison, Topeka and Santa Fe Railroad was laid through the area that was to become Nickerson.

A depot was built on the north side of the track and a section house on the south side. Even the name of the town comes from the railroads since it was named for Thomas Nickerson of Boston, Massachusetts, the president of the AT&SF Railroad.

The first post office was already in operation when the first town site was laid out, having been established in January of 1871 in the sod house of Mr. and Mrs. M.S. Sears. Mrs. Sears (Amanda) was the postmistress.

Originally, there was only one township in Reno County: Reno Township. Valley Township was formed in 1873, and later the same year four more townships were created: Little River, Haven, Castleton and Center.<sup>2</sup>

In 1874 the first schoolhouse was built to bring education to the children of the settlers occupying the land around Nickerson. This was also the year when a drought hit and clouds of grasshoppers darkened the sky and devoured the crops that had survived (CC 6).

The first town site was laid out in 1875 in the area on the north side of the tracks where the depot was located. In August of 1875, L.A. Reeves built a two-story building and set up a store with a stock of general merchandise. He sold the store and building in 1876 to A. Seivert. This was all the development that occurred in "old" Nickerson.

The second Nickerson was laid out in 1878 a mile west of the first site in a field of corn on John Sears' land, with the frame home of Sears as the only building. A few days after the town site was surveyed, the foundation for the Old Dominion House, the first hotel, was begun by James Devitt. This was followed by the beginning of The Harlow House, a second hotel, this one owned by A.L. Harlow. Before either of the buildings was completed, the Reeves building was moved in from the old site.

M. McCormick built a small drug store in October of 1878. It wasn't long before Seivert and Smith had a general store in operation. Nickerson soon had three hotels, two livery stables, two lumber yards, a printing office and a dozen other stores of various kinds. The *Nickerson Argosy* was first published Dec. 11, 1878, by Sargent and Bowman.

The building of a round house in 1879 by the Atchison, Topeka and Santa Fe added to Nickerson's importance. The round house, built of stone, had thirty stalls and a side track with room for 1,300 cars. Because of the railroad and the good wages it paid, the community of Nickerson was prosperous.

In June of 1879 Nickerson was incorporated as a third class city. The first mayor was L.A. Reeves; councilmen were M. McCormick, C.S. Brown, J.A. Moore, J.O. Smith and H.I. Nickerson.

Other officials were D.D. Olmstead, police judge; C.E. Heath, treasurer; A.H. Jackson, clerk; and J.D. Reed, marshal.

The *Nickerson Argosy* suggested in 1881 the election ticket of A.J. Locke for mayor and J.P. Hermann, E.H. Easterbrook, E.W. Elliott, C.E. Heath, and H.R. Nickerson for councilmen.<sup>3</sup>

The early 1880s was a period of continued growth for the community. Weber's Flour Mill was built—a three-story building with a basement. The mill cost \$4,480.17 without machinery. Other industries which operated at various times included a salt plant southeast of town, a brick plant, "Brownie's" Cheese Factory and the Leinbach Broom Factory. The Exchange Bank of Nickerson, established in 1881, soon became a bank of deposit as well and was known as the State Bank of Nickerson.

According to the *Nickerson Argosy* of April 26, 1882, life was full of commonplace events. The newspaper reported that 400 freight cars had passed through in one day the previous week. An advertisement revealed that G.B. Thatcher had refitted his bath room in the rear of the Reeves House Barber Shop and was prepared to accommodate all wishing either hot or cold baths. The Allison House Restaurant was offering "the best meals in town" for 25¢ or for \$3.50 per week; J.C. Garrison was the proprietor.

Social life grew, too, with the establishment of several lodges and social organizations. The IOOF No. 190 began in 1881; AF & AM Lodge No. 42, in 1882; Order of Eastern Star No. 33, in 1884; and the Rebekahs, in 1885.

Apparently not all of the social life of the town was confined to formal and decorous organizations. The Cameo Club history of Nickerson reported, "A history of the town couldn't be written without mentioning the early day saloons which were plentiful along Front Street" (12).

Situated in the City Hall, built in 1881, were the Post Office; Wiley Cooper Book Store; the Opera House (upstairs); the City Jail (on the west side of the hall); and the Fire Station (at the rear).

In 1885 the population of Nickerson was slightly over 1,500; by 1888, it was 2,347.

Nickerson's growth and prosperity began to end in 1894 when the railroad shop men obeyed the strike order of the American Railway Union which began a long, bitter fight. The strikers lost and the round house was moved to Newton. Nickerson's population dropped and the value of tax property decreased as many homes became vacant.

The people remaining in Nickerson worked to save the town. The Normal College was organized and Nickerson started growing again.

Among the early settlers of Grant township was William D. Shuler, known throughout the neighborhood as "Squire" Shuler (Ploughe 99-100).<sup>4</sup> A native of Virginia, Shuler married Sarah Ann Koontz in 1855. The family came to Reno County in 1875.

The Shulers had five children including Jacob who remained in Grant Township after marrying Annie Cook in 1884. Jacob's children included William Archie, Harold, Gilbert A., and Annie Gertrude.

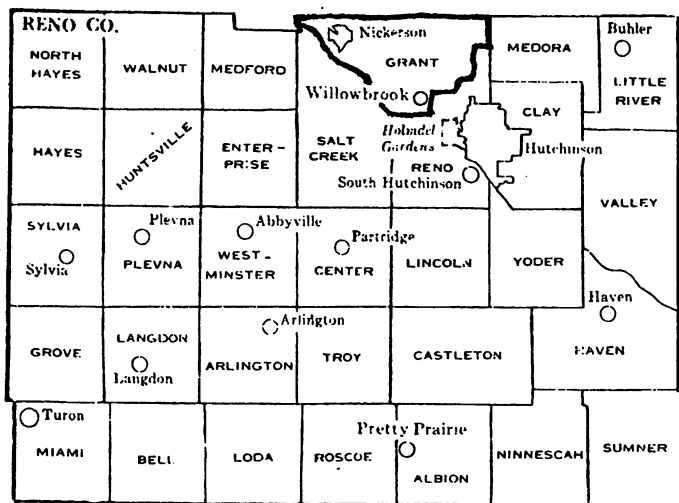
Albert E. Harden, a native of Iowa came to Kansas in 1877. He married Mattie Moorman in 1890 and they had three children: Evert Earl, Leon Clyde and Alva Anthony. Mattie's father was William Henry Moorman, a Civil War veteran who had been at the siege of Vicksburg. Born in Ohio in 1840, Moorman had come to Kansas in 1878, first to Stafford. Later he worked for the car repair service of the Santa Fe.

<sup>1</sup>*Nickerson*. (Nickerson: Cameo Club, 1967), p. 3. The Cameo Club's history of the Nickerson community is the major source of information for this article. Other sources will be indicated as used.

<sup>2</sup>Lynn J. Aldrich. "A History of Reno County Elections," An unpublished master's thesis presented to Kansas State Teachers College at Emporia, Kan., 1970, p. 2.

<sup>3</sup>Copies of the early *Nickerson Argosy* are available on microfilm at the Hutchinson Public Library, Hutchinson, Kan.

<sup>4</sup>Sheridan Ploughe, *History of Reno County Kansas: Its People, Industries and Institutions*. Vol. II. (Indianapolis, Ind.: B.F. Bowen & Co., Inc., 1917).



from Nickerson and the vicinity entered into an agreement with J.H. Jackson, superintendent of the Nickerson City School, and E.B. Smith, president of the Central Normal College at Great Bend, Kan., to organize and maintain Nickerson Normal College. A charter was obtained June 30, 1898.

The normal college opened August 30, 1898, with 78 students, a number which increased to 281 by June 9, 1899.

In 1903 the name was changed to Nickerson College, and in the same year Reno County High School was organized with E.B. Smith the college president and the high school principal.

The first building was the remodeled South Side School building, to which a chapel was added. Besides the Main Building, a library was built in 1906, the Commercial Building in 1910, and the Farm Mechanics Building in 1911. The gymnasium, part of the Commercial Building, burned in 1954. A new high school building was built on the original school building site and occupied in 1956. This building was enlarged in 1962.

The high school has changed names many times from Reno County High School (1903-1924) to Reno Community High School (1924-1955) to Nickerson Rural High School (1955-1966). In 1966 it became a part of USD 309.

**Nickerson Churches**

The first church in Nickerson was the Methodist Church, organized by Elder J.W. Fox. Services were held in the school house until a brick building costing \$4,500 was completed in the fall of 1875. A new Methodist Church building was built in 1910.

The first Christian Church was built southeast of Nickerson in the 1880s. Shortly after that a small frame church was built in town. The two-story brick church was built in 1908 at a cost of \$15,000.

In 1882, the Baptist Church bought the old school house and moved it to the site where it still stands. The building has been remodeled, but the first school bell is still at the church.

Other area churches include the Midland Community United Church of Christ which was started in the early 1870s by a group of German families homesteading in what is now West Washington township in Rice County. A frame building, erected in 1913, was burned in April of 1936. It was replaced with a brick structure in 1937. The Evangelical Church in Nickerson united with the Midland church about the same time.

The Salem Church of the Brethren was first known as the German Baptist Church and later was named the Dunkards Church. The present brick structure was dedicated Sept. 12, 1920.

Mitchell Chapel was established in 1887 in the community east of Nickerson through efforts of W.D. Shuler and other pioneers. The church, costing \$1,489.23, was first used Dec. 27, 1887. The building was destroyed by fire in January of 1957. By December that year a new brick building had been completed. Further additions have since been made.

The Congregational Church was built just west of the Methodist Church in 1878; however, it later burned and was never replaced. The Christian Church parsonage was once the Brethren Church. The first Catholic Church in Reno County was organized by Rev. F.P. Sweenberg and located in Nickerson. Meetings were held in a home until a small frame church was built. In 1879 a building in Hutchinson was completed for the congregation.

—by Arless Eilerts

**In Future Newsletters**

The staff of the "Sunflower" intends to have histories of other early Reno County towns in future newsletters. The history of Turon is tentatively scheduled for August.

We are looking for knowledgeable people to write histories of towns we haven't yet covered, including Buhler, Haven and Castleton.

Anyone interested is urged to contact the editor. If you don't want to write the article, but have historical data to provide on any of the Reno County settlements, we would also appreciate hearing from you.

Edward Birge Smith came to Kansas from Steuben County Indiana (706). After marrying Helen E. Merwin in 1879, Smith studied law under John H. Binford at Crawfordville, Kan., and was the partner of Judge W.R. Brown of Hutchinson. He moved to Great Bend and was president of Central Normal College for six years.

Smith earned his Master of Arts degree from the University of Kansas in 1897. In 1898 he came to Nickerson and established a private school, an independent normal school. By 1899 an act of the legislature had given the school college standing and it received county support by 1903.

**Nickerson Schools**

Like many other pioneer communities, the people of the Nickerson community were eager to provide both educational and spiritual resources. The notices calling the people to a meeting to consider building a school house were tacked up in 1873 (CC 7).<sup>5</sup>At the first meeting, held in the depot, the group considered notary bonds with collateral to fund the school. A building site, about one-half mile east of the site of the Santa Fe depot, was given to the community.

At a second meeting, \$1,500 was determined to be the amount needed to build a suitable school house. The building was completed in May of 1874 with Mary Kinney as teacher and 15 pupils: Portor Burge, Ira Sears, Mary Harrison, \_\_\_\_\_ Harren, Charles Huffman, Jennie Devitt, Ernestine Kinney, Jessie Cleavland, Luther Harrison, John Burge, Maude Huffman, Albert Devitt, \_\_\_\_\_ Harren, and Fred Kinney.

A dance was held at the depot to raise funds to purchase a bell even though the nearest family lived a mile from the school house.

Serving on the first school board in 1875 were Levi Rainer, J.K. Ewing and D.J. Shafer.

In 1879 the white frame school house was moved to the new town site and occupied until 1881 when a two-story brick building with seven rooms was erected for \$7,000. The first principal was W.W. (Eli) Payne.

The grade school was first called Nickerson School. During the 1890s there were two schools, the North Side Grade School and the South Side Grade School (occupying the north building of the old high school). The school was later named Lincoln School.

In 1955 a new brick building was built one block north of the former site. The one-story building included a gym with stage and kitchen and cost \$366,000. The building, called the Elementary School, is now a part of Unified District 309, which was formed in 1965.

The Nickerson Community did not slight higher education. Recognizing the need for facilities in this part of Kansas people

<sup>5</sup>The information about Nickerson's schools and churches is a summary of the Cameo Club's 1967 history, pp. 7-10.

# Degree of cousinship depends on number of generations from common ancestor

You've just received a letter from your grandfather's brother's granddaughter. Quick now! What relation are the two of you?

Genealogists are constantly running into shirt-tail kin in relationships which are hard to identify. One generation past first cousin and most of us are in trouble.

The secret to determining the cousin relationship is to locate the common ancestor. If one generation (my parent) separates me from that common ancestor (a grandparent), any other descendant who is separated by one generation from that same grandparent is my first cousin.

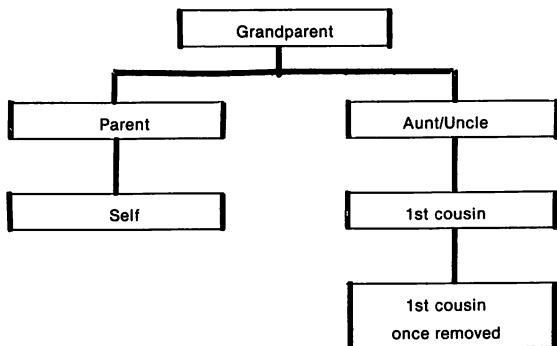


Chart 1

Descendants of my first cousin are still my first cousins, but are identified by the term "removed," that is, my first cousin's children are my first cousins once removed and my first cousin's grandchildren are my first cousins twice removed.

If a great-grandfather is the common ancestor, my grandfather's brothers are my great-uncles. My great-uncle's children are my father's first cousins, so they are my first cousins once removed.

However, since my great-uncle's grandchild and my grandfather's grandchild (me) are separated by the same number of generations from the common ancestor (two) my great-uncle's grandchild is my second cousin.

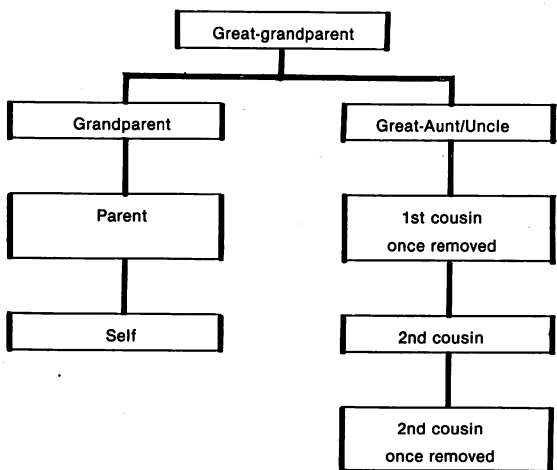


Chart 2

Working through the relationships helps a person realize that relatives he/she had been referring to as third cousins, for example, are actually much closer in kinship than that.

The number of times removed is figured by the number of generations you are removed from the person in your line. For example, if your grandparent is a first cousin to someone, that person is your first cousin twice removed—once for your parent's generation and the second time for yours. Your grandfather's second cousins are your second cousins twice removed. Your father's first cousin is your first cousin once removed; his second cousin is your second cousin once removed.

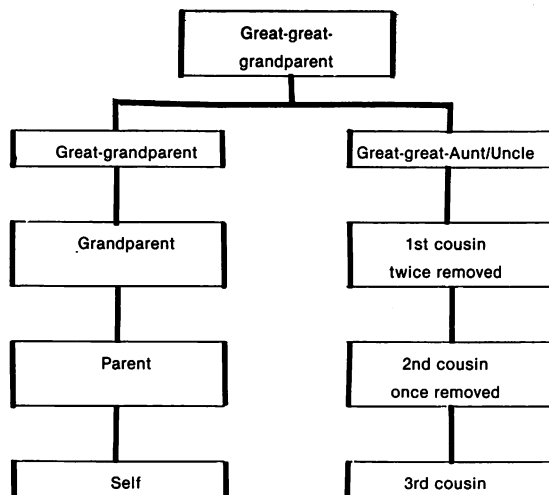


Chart 3

This means that someone descended from my first immigrant ancestor and separated by the same number of generations (seven, since I am a ninth-generation American) would be my seventh cousin.

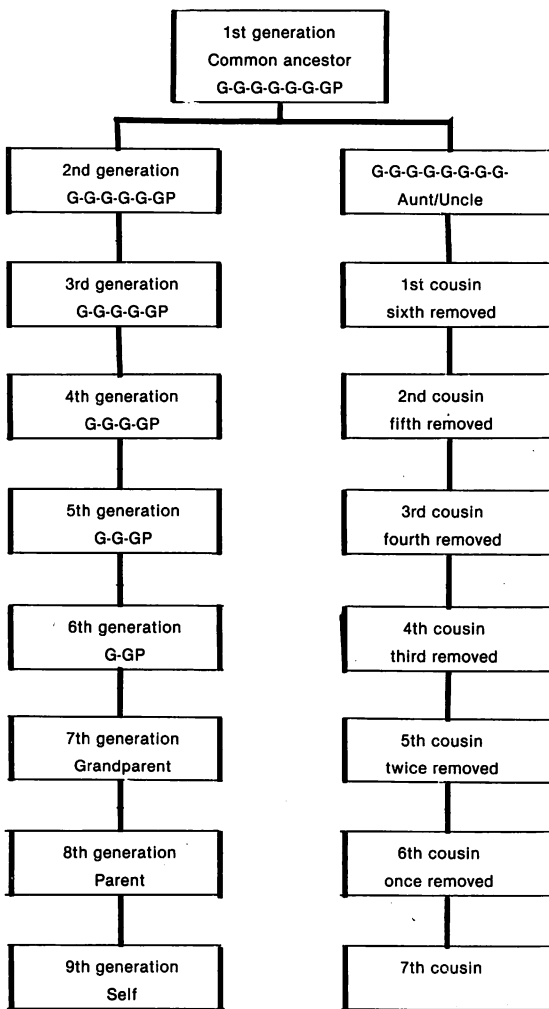


Chart 4

If, like me, you need a chart to look at, N. Dale Talkington copyrighted just such a device in 1976. The reference desk at the Hutchinson Public Library has a copy of his COUSIN-FINDER chart, or he sells them for \$3.83 per dozen. Talkington's address is 400 E. Northrup, Midwest City, Okla. 73110.



## Vital Records of Reno County, Kansas—Book I, Deaths 1890

| Name                           | Age  | Date  | Place                                    |
|--------------------------------|--|---|--|
| NO NAME [female]               | no date, but filed with Jan 1890 deaths, died Center Twp.    |   |  |
| INFANT -----                   | stillborn  | 27 Dec                                      | Hutchinson                               |
| ADAMS, Mrs. D.                 | 26yr   | 24 Jul                                      | Haven                                    |
| AELMORE, Regina                | 18mo   | 19 Mar                                      | Hutchinson                               |
| ALMQUIST, O.S. [male]          | 2da  | 22 Mar                                      | Hutchinson                               |
| ANDERSON, Alice M.             | 31yr 9mo 17da  | 6 Mar                                       | Hutchinson                               |
| ANDERSON, Frank B.             | 10yr 8mo 18da  | 24 Jan                                      | Hutchinson                               |
| ANDERSON, James                | no age [single]  | 19 Mar                                      | Hutchinson                               |
| ANDERSON, Roy T.               | 4mo 3da  | 9 Feb                                       | Hutchinson                               |
| ARMSTRONG, Mary                | 30yr   | 2 Mar                                       | Huntsville Twp.                          |
| BAILEY, -----                  | no information, filed with Jan 1890 deaths                   |   |  |
| BAKER, Wm. Henry               | 5yr 5mo 15da   | 30 Mar                                      | Hutchinson                               |
| BALDWIN, Dan or Don            | 9yr 7 mo   | 27 Dec                                      | Hutchinson                               |
| BANKS, Emma                    | 22yr 1mo 9da   | 9 Dec                                       | Hutchinson                               |
| BANTZ, Infant<br>of A.N. BANTZ | stillborn  | 8 Nov                                       | Sylvia, Kan.                             |
| BARDWELL, C.M. [male]          | 38yr   | 4 May                                       | Hutchinson                               |
| BARBER, Eliza                  | 55yr   | 12 Aug                                      | Reno County                              |
| BARGE, Clifton C.              | 10mo   | 26 May                                      | Hutchinson                               |
| BARR, Katie Mamie              | 1mo 7da  | 22 Jun                                      | Hutchinson                               |
| BARTON, Georgie                | 2yr  | 12 Jul                                      | Hutchinson                               |
| BASSETT, Mrs. A.A.             | 75yr 10mo  | 20 Feb                                      | Nickerson                                |
| BEAL, Geo.                     | 42yr 3mo 13da [no date or death place] filed with Jan deaths |   |  |
| BECK, John                     | 10mo   | 16 Aug                                      | near Nickerson                           |
| BEHREND, Mrs.                  | 40yr   | 28 Oct                                      | Castleton                                |
| BENEDICT, Jane                 | 12yr 4 mo 9 da   | 14 Nov                                      | Langdon                                  |
| BENEDICT, William W.           | 42yr 9mo 2da   | 31 Oct                                      | Langdon                                  |
| BOOTH, Geo.                    | [no age] secretary   | [no date]                                   | filed with Jan deaths Hutchinson         |
| BRADLEY, Nettie M.             | 21yr 1mo 4da   | 19 Dec                                      | Hutchinson                               |
| BRANAMAN, Alma                 | 6mo 22da   | 5 Apr                                       | Arlington                                |
| BRESSON, Florentin             | 45yr   | 20 Jun                                      | Hutchinson                               |
| BRIDGFORD, George Edgar        | 11da   | 6 Jun                                       | Hayes Twp.,<br>burial Stafford Co., Kan. |
| BRIDGFORD, Melvi [female]      | 27yr 6mo 6da   | 16 Jun                                      | Hayes Twp.,<br>burial Stafford Co., Kan. |
| BROWN, Edward F.               | 55yr 9mo 22da  | 23 Jul                                      | Hutchinson                               |
| BURBANK, Amelia                | 30yr 11mo  | 1 Apr                                       | Hutchinson                               |
| BURRING [or BUSSING], Eliza H. | 36yr 8 mo 28da   | 26 Jan                                      | Lincoln Twp.                             |
| BURWICK, Mrs. D.               | 35yr   | 7 Mar                                       | Hutchinson                               |
| CARTER, Ida M.                 | 27yr 1mo 11da  | 2 Jun                                       | Hutchinson, burial Pratt, Kan.           |
| CARTER, Mrs. Sarah             | 33yr   | — Oct                                       | Hutchinson                               |
| CAVANAUGH, Mrs. James          | 36yr   | 13 Apr                                      | Hutchinson                               |
| CHAFFIN, Gladwin [male]        | 85yr 5mo 13da  | 13 Mar                                      | Hutchinson                               |
| COCHST, Louis                  | 30yr   | 10 Sep 1891<br>[filed with Sep 1890 deaths] | Langdon                                  |
| COFFELT, Bessie                | 36yr   | 31 Jul                                      | Hutchinson                               |
| COFIELD, Delda [female]        | 6yr 28da   | 18 Dec                                      | Sego                                     |
| COLE, Geo. H.                  | 16yr   | 30 Nov                                      | near Hutchinson                          |
| CONSTANT, Hiram                | 49yr 6mo 24da  | 19 Jan                                      | Hutchinson                               |
| CRAIG, Elizabeth Ann           | 49yr 5mo 9da   | 15 Sep                                      | Arlington                                |
| CRIPPEN, Daniel                | [no age]   | [no date]                                   | Arlington                                |
| CROSSIN, Mrs. Annie            | 71yr   | 14 Oct                                      | Hutchinson                               |
| DAVIS, Mrs. Grace              | 22yr 3mo   | 12 Apr                                      | Partridge                                |
| DENNIS, Abraham                | 74yr   | 27 Sep                                      | near Hutchinson                          |
| DEVALL, Robert                 | [no age]   | 2 Jun                                       | Hutchinson                               |

### Vital Records of Reno County, Kansas—Book I, Deaths 1890 (continued)

| Name                                       | Age  | Date                               | Place                             |
|--|--|------------------------------------|-----------------------------------|
| DEWELY, John H.                            | 3yr 1mo 20da   | 27 Sep                             | Nickerson                         |
| DICKEY, Albert B.                          | 38yr 2mo   | 2 Jan                              | Hutchinson                        |
| DODGE, Daniel                              | 70yr   | 6 Apr                              | Hutchinson                        |
| DOUGLAS Infant<br>of M.A. Douglas          | 1mo 17da<br>[no sex given]                             | 22 May                             | near Turon                        |
| DUCKWORTH, Joseph                          | [no age given]   | 9 Jan                              | on railroad cars AT&SF Railroad   |
| DUDGEON, Laura                             | 18mo   | 28 Mar                             | Hutchinson                        |
| DUDGEON, Maggie                            | 4yr 5mo 15da   | 29 Mar                             | Hutchinson                        |
| ELLIS, Alonzo                              | 23yr   | 14 Oct                             | Hutchinson                        |
| ELLSWORTH, Norman                          | 73yr 2mo 11da  | 21 Aug                             | Langdon Twp.                      |
| ENGLAND, Infant                            | 1mo 15da   | 10 Apr                             | Hutchinson                        |
| FALL, Minnie G.                            | 21da   | 21 Apr                             | Castleton                         |
| FARNSWORTH, Lamar                          | 53yr   | 31 Jan                             | Partridge                         |
| FARREN, James Oron                         | 4da  | 11 Mar                             | Hutchinson<br>burial Sedgwick Co. |
| FISHER, George                             | 1yr  | 4 Oct                              | near Nickerson                    |
| FOX, Clara                                 | 8mo  | 9 Jul                              | Medord Twp.                       |
| FRY, Mrs.                                  | [no age given]   | 13 Nov                             | near Hutchinson                   |
| FRY, Eugene                                | 2da [no date or death place, filed with Jan deaths]    |                                    |                                   |
| FUNKHAUSER, -----                          | stillborn  | 24 Feb                             | Hutchinson                        |
| FUNKHAUSER, Maria                          | 27yr 7 mo 7 da   | 27 Feb                             | Hutchinson                        |
| GALLUP, Clarence                           | 4yr 8mo  | 28 Mar                             | Hutchinson                        |
| GERLOFF, Wm.                               | 18 yr 4mo 9da  | 25 Nov                             | Hayes Twp.                        |
| GIBBONS, child                             | 9mo  | 10 Jul                             | Hutchinson                        |
| GILLAEN, Berthie C.                        | 3yr 6mo  | 13 May                             | Nickerson                         |
| GLICK, Samuel A.                           | 57yr 1mo 14da  | 20 Apr                             | Castleton                         |
| GOLLIDAY, Peter                            | 56yr   | 2 Jul                              | Hutchinson                        |
| GOODRICH, ----- [male]                     | [no age given]   | 20 Jan                             | Hutchinson                        |
| GOODWIN, R.W.                              | 32yr [no sex given]                                    | 2 Jun                              | Hutchinson                        |
| GRANDFIELD, Infant                         | 5mo [no sex given]                                     | 23 Jul                             | Castleton                         |
| GRANDFIELD, Infant<br>of George Grandfield | 6mo [no sex given]                                     | 13 Aug                             | Castleton                         |
| GRAYSON, Mrs.                              | 45yr   | 6 Apr                              | Reno County                       |
| GREEN, Infant<br>of Frank Green            | [no age, sex given]                                    | 24 Jul                             | near Nickerson                    |
| GREEN, G. [no sex given]                   | 30yr 3mo 26da  | 26 Sep                             | Nickerson                         |
| HALL, Jennie                               | 40yr   | 6 Nov                              | Reno County                       |
| HAMMEL, William F.                         | 35yr   | 27 Jun                             | Hutchinson                        |
| HAMMEL, Mrs. William F.                    | 32yr   | 27 Jun                             | Hutchinson                        |
| HANES [or HONES], Mrs. Lucinda             | 67yr   | 29 Sep 1891<br>filed with Sep 1890 | Abbyville                         |
| HAPGOOD, Harry                             | 29yr   | 21 Dec                             | Hutchinson                        |
| HARDCASTLE, Jos. K.                        | 56yr   | 17 Jun                             | Hutchinson                        |
| HARPER, Landon                             | 23yr   | 15 Oct                             | near Hutchinson                   |
| HARRIS, ----- [female]                     | 6mo 27da   | 28 Mar                             | Langdon                           |
| HARTMAN, Clyde J.                          | 4yr 4mo  | 7 Jul                              | Hutchinson                        |
| HATHAWAY, Infant<br>of Taylor Hathaway     | 4hr [no sex given]                                     | 7 May                              | Grove Twp.                        |
| HEATH, Jno W.                              | 43yr 7mo 3da   | 22 Jan                             | Hutchinson                        |
| HILL, Infant                               | stillborn [no birthdate given filed with Nov-Dec 1890] |                                    | Haven                             |
| HILL, Martha E.                            | 38yr 3mo 7da   | 7 Dec                              | Huntsville Twp.                   |
| HOFFMAN, Infant                            | 15da [no sex given]                                    | 10 Aug                             | Hayes Twp.                        |
| HOLADAY, Hiram                             | 34yr 6mo 6da   | 9 Nov                              | Hutchinson                        |
| HOPPER, Frank                              | [no age given]   | 15 Aug                             | Sylvia                            |
| HOUSER, Wm.                                | 23yr 3mo 28da  | 22 Aug                             | Hutchinson                        |
| HUBBARD, N.R. [no sex given]               | 44yr 2mo 1da   | 16 Apr                             | near Nickerson                    |

(To be continued in August 1985 newsletter.)

# Queries. . .

Need: Date and place of marriage of **Edith Iona THOMPSON** and **George Marshall SKIDMORE**. Edith Iona Thompson was born 14 Oct 1877, Little River, Rice Co., Kan. They are both buried at Carmen, Okla. Mark WEBSTER, 262 E. 100 South #3, Provo, UT 84601.

\* \* \* \* \*

I am interested in any information relating to **Thurston Wayne FOSTER** and **Francis (BARNETT) FOSTER**. Her parents, Joseph and Wealthy (BROWN) BARNETT, moved to Reno Co. in 1873. They lived around Lerado. Charles M. COOK, 1017 High St., Houma, LA 70360.

\* \* \* \* \*

Can you help me to locate the family of **George** and **Elizabeth LAVERTY**, who moved to Kansas in the 1860s? Their sons Lewis and George went to school in Hutchinson. Ellen LAVERTY, 2168 31st St., Greeley, CO 80631.

## Cooperation Preserves Old Cemeteries

A movement to preserve old, abandoned cemeteries seems to be increasing in momentum.

One such movement was reported in *The Kansas City Times*, April 9, 1985. The Iowa-Nebraska Cemetery Protection Association intends "to save the cemeteries from a variety of threats, including the farmer's plow."

The Association's members want respect for the dead even when descendants are not able to (or don't care to) undertake the responsibility.

The association, based in Omaha and formed last June, has a membership of 20 members who are interested in preserving the old cemeteries scattered across the prairie of Nebraska and western Iowa.

One family cemetery near Bennington is an example of the association's work, according to member Marie Dabbs.

"About 20 people were buried in the plot on farm land thought to have been acquired in 1874 by German immigrant Albert Kobs. But in 1979, Albert's grandson, Ernest, sold part of the family farm.

"The acreage sold included the cemetery, with its remaining half dozen tombstones dating to the 1870s and 1880s. The cemetery was about a half-mile back from the nearest dirt road and the middle of fields."

The "Hash Family Historian" reports that a group of Hash and allied family members is forming to help preserve the families' early cemeteries.

(Thanks to Maxine (PARKER) LINDBURG for submitting the *Times* article.)

## New Members

The Reno County Genealogical Society extends a warm welcome to the following new members. Each has been asked to fill out a four-generation ancestor chart. Information from these charts will be transferred to the SURNAME FILE which is housed in the Kansas Room of the Public Library:

|   |  |
|---|--|
| Helen BRICE-NASH<br>324 Kansas<br>Hutchinson, KS 67502            | Tom DILLWITH<br>217 Chemical<br>Hutchinson, KS 67501 |
| Susan JOHNSON<br>2504-B N. Severance<br>Hutchinson, KS 67502      | Opal STONER<br>1204 E. 5th<br>Hutchinson, KS 67501   |
| Barbara A. (HOLMES) SIMPSON<br>P. O. Box 27731<br>Tempe, AZ 85282 |  |

### Change of address:

Helen (SIDLINGER) FOSTER  
The Meadows, D-1, Box 176  
Alliance, NE 69301

After June 1:  
Carla MILLER (Mrs. Lee)  
2 Oxford Lane, Rte 7  
Johnson City, TN 37601

## The Case of the RED 'X'

Look at the address label on the back of this Quarterly. Is there a red "X"? The red "X" indicates that to date our membership chairman has not received your dues for the current year.

Your society needs your dues, as we try to operate on a very low budget. There has been no increase in annual dues since 1979. Please help by remitting at once.

Dues are \$5 for a single membership and \$7.50 for a family. Our year is from 1 April to 31 March.

If you have already sent your dues, we thank you.

## Surname Index File Booklet Supplement

Preparations are being made for the compiling of a supplement to the Surname Index File Booklet. The deadline for updating ancestor charts is Aug. 1, 1985. Either bring the charts to a regular RCGS meeting or mail them to: Reno County Genealogical Society, Box 5, Hutchinson, KS 67504-0005.

—Carolyn Sue (BURDETTE) MILLER  
Surname File Chairman

## Announcements

Don't forget the **Seminar** by Grace (SHAW) WOLDT which the RCGS is hosting May 4 at Morgan School.

\* \* \* \* \*

Hutchinson Community College is sponsoring a week-long, live-in **genealogy workshop** on campus from June 2 (check-in at the dorms) to June 7.

Information is available at the Reference Desk in the Hutchinson Public Library or in the Continuing Education Office at HCC, 665-3550.

\* \* \* \* \*

Because of the building going on at the Hutchinson Public Library, the auditorium and the conference rooms will be unavailable for meetings starting June 1, according to library director Leroy M. Gattin.

The Kansas Room will be open for research.

Beginning in June, **the society will meet** at Emanuel Lutheran Church, 105 Curtis. Park in the south lot and enter by the south door. This alternate meeting place will be used until the library construction is completed.

## Information exchange

Most people who work with genealogy also join other historical and genealogical societies. As our hobby grows, we develop our own libraries including everything from "how-to" books to family histories, from catalogs to society periodicals.

Most of us don't mind sharing some of those resources with others who would find them useful. Some of mine I would lend, some I would lend briefly for copying; some I would not lend but would use to look up items on request.

In my files I have miscellaneous materials (society journals, maps, xeroxed lists, etc.) for the following areas: Bedford, Lehigh, Schuylkill, Berks and Somerset counties in Pennsylvania; Pike County in Indiana; Franklin and Madison counties in Ohio; Scott and Grayson counties in Virginia; Osborne County in Kansas; and Buchanan and Clinton counties in Missouri. I have state information for Missouri, Virginia and Kentucky.

I have information about sources in most of those areas.

The names I have information about include Moser, Eilerts, Elliott, Manahan, Ward, Bailey, Hash, Watkins, Miller, Perry, Buttermore, Commins. Allied families are Myers, Huffman, Sturgill, Stamper, Halsey—among others.

Anyone who would like to review the information may call me at 662-5714 after 5 and on weekends.

Other RCGS members who have material they would be willing to share are invited to send their names and lists of their materials to me at 3101 Curtis Drive, Hutchinson, KS 67502 for inclusion in future newsletters.

## Items for Sale

*Cemetery Records of Reno County*  
Burials from 1860s through 1978.  
\$20 plus \$1.75 postage and handling.  
Kansas residents add 70¢ sales tax.

*Early Marriage Records of Reno County*  
1872-1913  
\$20 plus \$1.50 postage and handling.  
Kansas residents add 70¢ sales tax.

*Guide to Reno County Records* \$1.50

*Surname File Index* 2.50

### Charts:

|                               |      |
|-------------------------------|------|
| Ancestor Chart                | .05  |
| Census Worksheet              | .05  |
| Family Chart                  | .05  |
| Additional Children Chart     | .05  |
| Federal Census Searched Chart | .05  |
| Census Worksheet Packet       | 1.00 |
| Family Chart Packet           | 1.00 |

(Add 50¢ postage and handling for each packet ordered.)

15-Generation Ancestor Chart

Send orders to Reno County Genealogical Society, P. O. Box 5, Hutchinson, KS 67504-0005.

RENO COUNTY GENEALOGICAL SOCIETY  
THE SUNFLOWER, a quarterly publication  
Arless [MOSE] EILERTS, Editor  
P.O. Box 5  
Hutchinson, KS 67504-0005

|  |
|--|
| Non-profit Organization<br>U.S. Postage Paid<br>Hutchinson, Kansas<br>Permit No. 171 |
|--|

ADDRESS CORRECTION REQUESTED