

Newsletter



Volume V, Number 2

5th ANNIVERSARY YEAR

MAY 1983

IN THIS ISSUE . . .

- 15 Revolutionary War Pension Applications -
A Book Review
- 16 Kansas Council of Genealogical Societies:
Ninth Annual Meeting - Wichita
- 17 The First Five Years of R.C.G.S.
- 18 Church Rivalry in Langdon, Kansas
- 19 Notes on Early Reno County, Kansas
- 20 First Reno County Census
- 22 Reno County Births - 1891
- 26 Senate Bill 905
- 27 Queries
New Members

MAY 1983

OFFICERS:

President

Garland F. HENSON 665-5003

Vice-president

Maxine (PARKER) LINDBURG 663-3968

Recording Secretary

Linda (ANGLE) WORLEY 665-6175

Corresponding Secretary

Winnie (BROCK) HENDERSHOT 662-6509

Treasurer

Beatrice E. (GROSS) STANSEL 662-5737

Immediate Past President

Raymond STEWART 663-5379

COMMITTEE CHAIRMEN:

Cemetery Records

Arthur GRAVES 662-6542

Consultant

Malinda (CROTTS) PETERSON 663-3453

Courthouse Records

Lydia (HEWITT) STREETER 662-1103

Education

Delma (KINCHELOE) ASHCRAFT 665-7946

Historian

Carrolyn (BURDETTE) MILLER 669-9757

Marriage Records

Everett Wells 662-7852

Membership

Danny MILLER 669-9757

Program

Lawrence J. COX 665-8720

Publicity

Everett WELLS 662-7852

Registered Agent

Roy A. GARDNER 662-8912

Research

Jolene (MITZNER) COOK 662-6278

Supplies

Lynn STANSEL 663-8678

Surname File

Debbie (COLLE) SNYDER 585-2289

NEWSLETTER STAFF

Editor

Jayne (KOEPEKE) PURCELL 662-4966

Assistant Editor

Pamala (THOMPSON) STANSEL 663-8678

Book Reviews

Betty (MYERS) MORGAN 662-7030

Proofreading

Lynn STANSEL 663-8678

Queries

Jolene (MITZNER) COOK 662-6278

Ancestor Charts

Debbie (COLLE) SNYDER 585-2289

The Reno County Genealogical Society of Hutchinson, Kansas was founded in 1978 for the purpose of fostering genealogical research, promoting the exchange of information and encouraging the deposit of genealogical and historical materials in established libraries and archives.

We are affiliated with the Kansas Council of Genealogical Societies and the Federation of Genealogical Societies.

Membership in the Reno County Genealogical Society is open to anyone interested in genealogy. Dues are \$5.00 per year single membership and \$7.50 per year per family membership. All dues are paid at once for the period of from 1 April 1982 to 31 March 1983.

All donations and gifts to the society are tax exempt. Dues are not deductible.

THE NEWSLETTER, a quarterly publication of the Reno County Genealogical Society, is published in February, May, August and November. The staff welcomes the contribution of records and stories pertaining to genealogy and history.

Meetings are held on the third Monday of each month (except December) in the auditorium of the Hutchinson Public Library, 9th and Main, 7:00 - 9:00 PM.



A NOTE FROM THE PRESIDENT

Many thanks for your support in the election of officers at the March meeting. I really wasn't expecting any office, but since being one of the organizers five years ago, I have always felt I was a part of it all. The officers and committee chairmen have done a fine job in the years since, in putting together a fine society. I certainly want you to continue this support in the coming year. Your suggestions and ideas will help us to continue to improve and grow.

--Garland F. HENSON

RENO COUNTY GENEALOGICAL SOCIETY

CALANDAR OF EVENTS

12 May 1983 - Workshop, Kansas Room, Library, 7 PM. HOW TO USE TELEPHONE BOOKS IN YOUR GENEALOGICAL RESEARCH. Becky HATTON.

16 May 1983 - RENO COUNTY GENEALOGICAL SOCIETY 5th ANNIVERSARY DINNER MEETING. 6:30 PM, Edelweiss Restuarant, 17th and Halsey. \$7.00 per person, Guests Welcome. Speaker Mr. Charles King, St. Joseph, MO.

3-4 June 1983 - Kansas Council of Genealogical Societies annual meeting, see page 16 for more details.

Watch the Hutchinson News for dates and places of the June and July meetings.

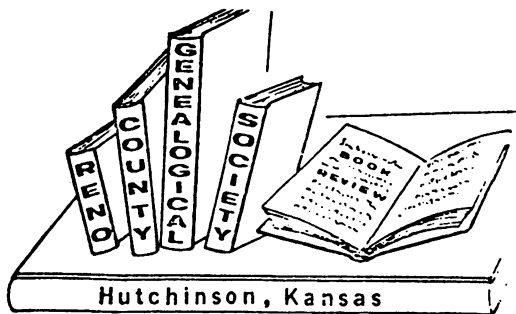
* * * * *

FALL WORKSHOP ON FORMS

Becky HATTON will have a fall workshop on forms (date to be announced later). Do you have favorite genealogical forms that you regularly use? If so, Becky would like to have a sample of them. Please send examples and ordering information to Becky HATTON, in care of the society, at P.O. Box 5, Hutchinson, KS 67501, before June 1st.

THE CASE OF THE RED 'X'

Is there a red 'X' on the address label of your copy of this NEWSLETTER? It indicates that our treasurer has not received your dues for the current year. Dues are \$5.00 individual and \$7.50 for a family. A membership roster will be published with the next NEWSLETTER and will contain only the names and addresses of those who have paid their dues.

REVOLUTIONARY WAR PENSION APPLICATIONS

Is there a chance one of your ancestors applied for a pension after the Revolutionary War? You can find the answer to this question in a book among the genealogy books of the Hutchinson Public Library. The title is Index of Revolutionary War Pension Applications in the National Archives, Washington, D.C.: National Genealogical Society, 1976. If your forefather or his widow applied for a pension, the veteran's name will be one of 80,000 listed alphabetically and will be followed by the number of the application. This information would make it easy for you to obtain the records from the National Archives.

The value of obtaining a copy of the pension records is that they contain invaluable historical and genealogical information. The historical information includes the organization of military units, movement of troops, details of battles and campaigns, and activities of individuals. The genealogical information, of course, is of primary interest to the family researcher. The pension application gives rank, unit, and period of service, age, date of birth, residence, and sometimes birthplace. The property schedules give names and ages of a veteran's wife and children. The application of the widow gives age, residence, maiden name, date and place of marriage, date and place of death of her husband. With these facts are the documentary proofs provided by the widow.

All in all, it may be worthwhile for you to check on this book of Revolutionary War pension applications. It might help you to discover a wealth of family history.

--Betty Morgan



MAY 1983

NINTH ANNUAL MEETING and WORKSHOP of the
KANSAS COUNCIL OF GENEALOGICAL SOCIETIES

3-4 June 1983 - Hyde Park United Methodist
Church, 228 Ellis, Wichita, Kansas.

Registration prior to 15 May - \$16.50
Registration after 15 May - \$17.50
(Does not include lunch).

Registrations received before 15 May may
include two names to be included in the
Surname List for the program.

PROGRAM

Friday, 3 June 1983

1:00 - 5:00 PM - Church Basement
"What's Your Problem?" A number of
knowledgeable persons will be available to
help you personally with your research
problems. Sign up and take your turn.

A large display of books and genealogy
supplies will be open in the basement of
the church for your enjoyment. Allow plenty
of time to shop.

7:00 PM - President's Tea

Presidents of all societies are encouraged
to bring as many members and guests as
possible to mingle and get acquainted.
Meet the Council Board members and our
speaker and have fun during the social hour.

7:30 - 8:00 PM - Rabbi Malcolm STERN will
make a brief address.

Rabbi Malcolm is a native of Pennsylvania
and has held many honored positions in He-
brew Congregations. He is currently on the
faculty of the New York School of Hebrew
Union College. He has done extensive work
in Jewish genealogy, publishing several
books, best known of which is First Ameri-
can Jewish Families: 600 Genealogies 1654-
1977. He serves with the U.S. National Ar-
chives.

Saturday, 4 June 1983

8:00 - 9:00 AM - Registration

9:00 AM - Panel Discussion "Helping You
Learn", designed to give every member and
society some ideas on how to improve your
societies and why.

THE PANEL:

Leland ADAMS (moderator), treasurer Federa-
tion of Genealogical Societies, legisla-
tion chairman of Kansas Council.

Roy GARDNER, retired accountant and member
Reno County Genealogical Society, "How to
Incorporate and Why".

Joyce HANSEN, editor Federation of Genealo-
gical Societies Newsletter and Kansas Coun-
cil Atlas Chairman, "How To Produce and
Improve Your Newsletter".

Rowen HERR, editor Kansas Council Review
and member Topeka Genealogical Society,
"Material to Use and It's Accuracy".

Chuck KING, photographer, "Photographs--
How and What to do to Publish Them".

10:30 AM - Information Session, Rabbi Mal-
colm STERN, "What's Happening in Genealogy
Around the United States".

12:00 Noon - Lunch Break

1:00 PM - Council Business Meeting. Elec-
tion of Officers and drawing for door
prizes.

2:00 PM "Jewish Migration Paths Across the
Country". Learn how these people affected
our lives and changed history as they set-
tled in America.

4:00 PM - Questions and Answers

For more information, call Irene CORTEZ,
(316) 685-7525 or Jo ESLINGER (316) 681-
0847.

TO REGISTER: Send name and address along
with check for registration and the name of
the society you represent to: Jo ESLINGER,
1309 Gretchen, Wichita, Kansas 67206. Also
include the two names for Surname Page in
the program. (Example: HATTON 1860-70 IL,
MAHAFFEY 1860-70 IL). Would you like to
purchase a sack lunch at the church? The
price will be kept as low as possible. Men-
tion this when you send your registration,
or you may bring your own brown bag lunch.

THE FIRST FIVE YEARS

A meeting was held 7 March 1977 in the auditorium of the Hutchinson Public Library with the purpose of organizing a genealogical society. Mr. Garland F. HENSON conducted the meeting with 60 persons attending. HENSON appointed a committee composed of himself along with Malinda PETERSON, Lurye EMIG and James ARTERBURN, to begin organization proceedings. The group was organized 20 March 1978 with the following officers elected: Betty (MYERS) MORGAN, President; Jesse KING, Vice-president; Anita (ANDERSON) GOLDBERG, Recording Secretary/treasurer; and Jayne (KOEPEKE) PURCELL, Corresponding Secretary.

The society began with 68 charter members in 1978 and has grown to 173 in 1983. (32 family memberships and 109 single memberships).

The first issue of the Reno County Genealogical Society NEWSLETTER was published in February of 1979 with Jesse KING as editor, and Jayne (KOEPEKE) PURCELL as his assistant. Jayne became editor in February of 1980 and continues in that position.

Since the society's beginning, several noteworthy accomplishments have been made. A cemetery book as well as a marriage records book have been compiled and published. The surname file continues to grow and an index to the file will be published soon. An obituary file from 1977 to the present time is maintained by the society.

During these past five years numerous workshops and monthly programs have been held to aid members and guests in developing research techniques.

The objects of the Society are to: Further a popular interest in genealogy by acquiring genealogical, historical and biographical information to share with its members; record and preserve genealogical records; add to the genealogical and historical knowledge of its members; and to assist members in the compilation of family histories. As can readily be seen, we are well on our way to achieving these goals.

The first five years have been productive. Hopefully the next five will be even better. HAPPY 5th ANNIVERSARY, RCGS!!!!!!

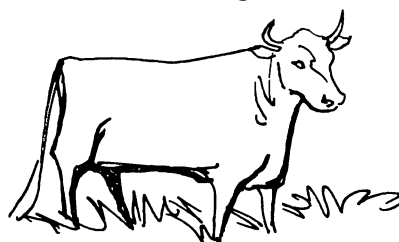
--Carrolyn (BURDETTE) MILLER,
Historian

SUGAR PLANT HERE - 1883

The main food for many of the early settlers was limited to corn bread, sorghum molasses and sowbelly. A sugar mill in Hutchinson encouraged the farmers of Reno County to grow sorghum. After the stalks had been ground and the juice pressed out, boiling pans over a hot fire cooked juice until it became syrupy. At that stage it was molasses, for table use and for cooking such "goodies" as gingerbread and molasses cookies. Further cooking of the syrup brought it to the granulating stage, when it was then brown sugar, the sugar for early settlers.

In 1883, a 4-story structure was built in the 600 block of East First Avenue as a plant for making sugar and syrup from the sorghum the area farmers had been encouraged to raise as a "cash crop". This building is still standing.

--Jesse E. KING



---and A COW DROPPED IN!

Some of the early homes in the area were dugouts; others were sod houses. These homes were surprisingly comfortable, but problems could arise--such as cave-ins after hard rains; snakes and mice might appear; if the dugout happened to be in a hillside, wandering cattle or buffalo might walk right over the roof.

--Jesse E. KING

* * *

KENTUCKY AND ARKANSAS HELPS

Danny and Carrolyn MILLER have acquired the following books. If you are interested in looking through them, call the MILLERS at 662-9757:

Fort Knox Cemeteries in Bullitt, Hardin and Meade Counties, Kentucky.
1850 Census for Bullit County, Kentucky.
Cemeteries of White County, Arkansas.



CHURCH RIVALRY IN LANGDON

(From a letter to Maxine LINDBURG from Guilford RAILSBACK of Langdon, Kansas).

Dear Maxine:

-----Hope this story is satisfactory. As you can tell, there is some doubt if whether the debate ever took place, but I think it did. For some reason my Aunt Fay disclaimed any recollection of it. (Perhaps they didn't want to remember!) Sadie APPLE-GATE remembered the story and checked with her Aunt Em (now deceased) who corroborated the general facts.

Anyway, I think it's a good story and now that we've surely overcome some of our denominational prejudices, perhaps it's a good one for your newsletter or whatever.

Cheers, Guilford R.

In Langdon's early days, the two churches Methodist Episcopal and Christian (Disciples of Christ) were active rivals to the point that it was said that they "fought each other more than they fought sin". The basic differences in the philosophies of the two denominations were not great, but in those pre-television days when entertainment was hard to come by, the differences tended to loom large.

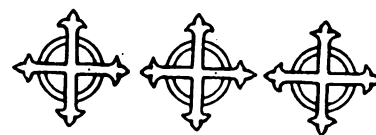
According to Floyd HOBBS, long time Langdon resident (now deceased), a great debate

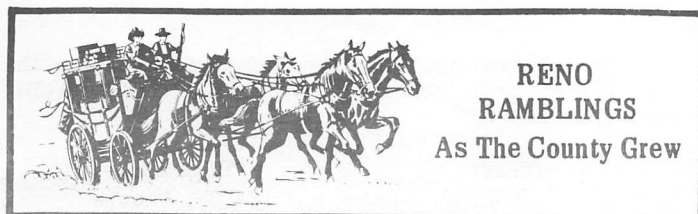
was conducted between representatives of the two churches. A wooden platform was constructed for the event in the middle of the town in August 1896. The Christians, aware that their regular minister might be bested in an open debate by the Methodist pastor, imported a speaker from another state. This visitor, a huge, over-weight man, was visibly affected by the intense heat of the August afternoon.

As Mr. HOBBS remembered it, the Christian minister, in summing up his argument on an important point, relative to the Christian Church stand on a controversial subject concluded with this impassioned statement, "and may the good Lord strike me dead if what I have just said is not the gospel truth!" Whereupon the minister fell to the platform floor, dead of a heart attack.

Mr. HOBBS also told of a telegram being sent to a funeral director in Hutchinson (there being no telephones in Langdon in 1896), the funeral director's coming to Langdon on the evening Rock Island train bringing a casket with him, the subsequent embalming of the deceased in the back room of a Langdon general store, and the departure the following morning of the funeral director and the casket bearing the body of the minister.

A sidelight to this story is that when it was told by Mr. HOBBS in 1975, an effort was made to obtain corroboration of the incident among the oldsters of the town. Strangely, among the very few who were old enough to have personal recollection of the event, the members of the Christian Church who were interviewed reported no knowledge of the debate or the death of the imported minister. On the other hand, members of the Methodist Church recalled the incident much as related by Mr. HOBBS. Surely this points out the importance of recording historical events so that future generations may have an accurate account of what actually took place.





(These notes were published in the Reno County Bicentennial BUGLE in April 1976, Jesse E. KING, Editor).

NICKERSON in the 1870's

A schoolhouse was erected; A.L. REEVES built a two story building and opened a general store. A depot was built in 1873. Publishing of the Nickerson Argosy was started in 1878. Nickerson was incorporated as a 3rd class city in 1879.

EARLY ABBYVILLE

Abbyville became a city in 1885. "Uncle" Jimmy McLEAN named the town after his daughter Abigail. George SHAVER was the first teacher in 1875 in the area. He received \$25 per month. Church members worshipped when and where it was convenient. The Methodists came in 1881, the Baptists in 1890, the Christians in 1892.

More than thirty business firms thrived in the community by the start of the 20th century. In 1910, Will CRUSEN was editor of the Abbyville Register, the weekly newspaper. Annual subscription \$1.

ARLINGTON 1885

Arlington was on the route of the Sun City Trail of early days and a stopping place for haulers because of the abundance of water and grass. Later it was a cattle trail for drovers on the way from Texas to Abilene.

The first building was a three story frame mill operated by water from the Ninnescah. It had a daily capacity of 50 barrels. Later the Arlington House was built and in 1878 the post office was established. The first school was taught by Juliet COURTRIGHT in 1878. Arlington was built on the Heights of Arlington.

HAVEN in 1886

The first lots in Haven were sold April 12, 1886. Inside of sixty days, Haven had six homes. Eagle Townsite Company established Haven. Part of the contract was that the Wichita Railroad (now Missouri Pacific) should be built in Haven. The first railroad train arrived in 1891.

TURON/TURIN

It was intended to name the town after a city in Italy, Turin. The post office department objected to that name and suggested the present form Turon. The town was established in 1886. It was a good trading center and a great Saturday night town.

SYLVIA on the WEST SIDE

Sylvia's emergence coincided with the creation of the township by the same name in 1886.

PARTRIDGE - GEOGRAPHICAL CENTER

Partridge is close to the center of the county. Originally it was called Reno Center. It was on the old stage route to Medicine Lodge. The name Partridge was adopted in March 1886 when the town was incorporated.

MEDORA and ELMER

Medora townsite plat was recorded in April 1887 while Elmer was platted in September of 1886.

LANGDON

Langdon was incorporated in 1887 and met the needs of the surrounding community for many years. It is still a nice quiet small town.

PLEVNA

Plevna was incorporated in 1891. It was a typical small town with facilities to serve the farmers of the area. Good churches and schools plus stores.

BUHLER

Newest of the towns in the county is Buhler, settled in 1914 by German Mennonites.

THE ORGANIZATION OF RENO COUNTY, KANSAS

(From PLOUGHE'S HISTORY OF RENO COUNTY, KS)

At the time Reno County, Kansas was organized, the statutes required six hundred inhabitants as a necessary number to entitle a county to obtain self-government. Late in December of 1871, a petition was circulated in Reno County and the requisite number of signers was obtained. It is believed that some of the signatures were placed on the roll by proxy--many were small children.

Some of the names may not be correct, for the hands that signed them were unused to holding a pen. The ink is faded and the paper upon which that petition was written is yellow, making identification in some cases impossible. It is an honor roll, worthy to be written on any monument and, in the absence of any other record, the names are here recorded:

- | | | | | |
|---------------------|--------------------|----------------------|----------------------|-----------------------|
| ADAMS, J.C. | CARROLL, John | CROLY, S. | EVERETT, _____ | HATCH, Eber |
| ALLEN, _____ | CARROLL, P. | CROLY, T. | FAIRCHILD, Edward | HATCH, Phoebe |
| ANDERSON, G. | CARROLL, Thomas | CROSBY, Charles | FAIRCHILD, S. | HATCH, Sarah |
| ANDERSON, J. | CARSON, Benjamin | CROSBY, Ellen | FALEY, _____ | HENLY, T.E. |
| ANDERSON, John | CASE, John | CROSBY, Emmet | FALEY, _____ | HENSON, Andrew |
| BAGLEY, J.W. | CASE, Mary | CROSBY, Freeman | FALEY, Thomas | HESS, B. |
| BAKER, E.D. | CASEY, B. | CROSBY, George | FALLEY, William | HILTON, Henry |
| BEAM, Alex | CASEY, G. | CROSBY, Lorenzo | FAY, _____ | HITCHCOCK, M. |
| BELL, Carrie | CASEY, U. | CUMMING, Alfred | FAY, _____ | HODGSON, Hetherington |
| BELL, E.L. | CASEY, V. | CUMMING, Charles | FAY, _____ | HODGSON, Jennie |
| BELL, Joseph | CASEY, W. | CUMMING, James | FAY, M. | HODGSON, May |
| BELL, Lucy | CASEY, W. | CUMMING, Sarah | FIFE, J.M. | HODGSON, Thomas |
| BELL, Robert | CASEY, Bridget | DAVIDSON, Oly | FLETCHER, J. | HOLCANST, Hattie |
| BELL, William | CASEY, George | DAVIS, _____ | FLETCHER, Manin | HOLCANST, Jennie |
| BELMONT, Clarence | CASEY, Harrie | DELANY, Thomas | FOSTER, Charles | HOLCANST, Mollie |
| BELMONT, James | CASEY, Susan | DENNIS, Mary | FOSTER, Frank | HOLCANST, W.H. |
| BOND, _____ | CASEY, William | DENNIS, S.F. | FOLEY, Thomas | HOLSEY, Lewis |
| BOYD, George | CASEY, Willie | DENNIS, Samuel | FREES, Hannah | HUBBARD, Alfred |
| BOYLES, Charles | CATHAMER, C. | DENNIS, Sarah | FREES, James | HUBBARD, E.P. |
| BRADY, Peter | CATHAMER, S. | DODGE, Ann | FREES, Mary | HUBBARD, James |
| BRAINARD, Jesse | CATHAMER, J. | DODGE, Hariet | GAFFANY, John | HUBBARD, John |
| BROADHEAD, _____ | CHASE, F. | DODGE, Kitty | GASTON, A.E. | HUBBARD, Kattie |
| BROWN, Dora I. | CHASE, Maria | DODGE, Martha | GASTON, Charles | HUBBARD, Mary |
| BROWN, Ezra V. | CHASE, Matilda | DODGE, Mary | GASTON, Mary | HUBBARD, Sarah |
| BROWN, Henry | CHATTHAN, John | DODGE, William | GASTON, William | HUDDLE, S.C. |
| BROWN, Thomas | CHESTNUT, W. | DOLIN, Michael | GOODHUE, Artemas | HULL, M. |
| BURKE, Charles | CLAPOUL, M. | DOPP, _____ | GOODHUE, B.W. | HULL, William |
| BURNS, H. | CLAPP, John A. | DOPP, Mathew | GOODHUE, Benjamin W. | HULTKVANS, F. |
| BUTCHER, E. | CLARK, Julia | DORSON, J. | GOODHUE, Charlotte | HUNTSINGER, James |
| BUTCHER, Mariah | CLARK, Robert | DORSON, John | GOODHUE, Gilbert | HUTCHINSON, Albert H. |
| BUTCHER, T. | CLARK, Sarah | DORSON, T. | GOODHUE, Louisa | HUTCHINSON, Arthur |
| BUTCHER, THOMAS | CLARK, William | DOUGLASS, George | GORGAN, _____ | HUTCHINSON, C.C. |
| BUTLER, Clark | COLBURN, Eva L. | DOUGLAS, William | GORGAN, _____ | HUTCHINSON, Carrie M. |
| BUTLER, Sarah | COLBURN, H.D. | DOYL, Patrick | GORGAN, C.H. | HUTCHINSON, Wm. E. |
| BUTLER, James | COLBURN, Talmadge | DOYL, W. | GORGAN, D. | IJAMS, B.V. |
| BYREN, T.F. | COLGROVE, Edwin | DRAKE, Allen | GORGAN, Davis | IJAMS, Isaac |
| CALDWELL, A.B. | COLGROVE, Hiram | DRAKE, Ayres | GORGAN, Phebe | IJAMS, John W. |
| CALDWELL, M.A. | COLGROVE, Hiram J. | DRINNIGAN, Peter | GREEN, _____ | IJAMS, Sallie |
| CALDWELL, TILA | COLGROVE, Susan | EASTER, William J. | GREEN, _____ | IJAMS, William |
| CALDWELL, W.C. | COLGROVE, William | EISENBERG, Catharine | GREEN, _____ | JANSON, B. |
| CAMPBELL, Elisabeth | COLONY, James | EISENBERG, Christine | GREEN, _____ | JEFF, A.C. |
| CAMPBELL, Emily | COOK, Mary | EISENBERG, Jacob | GREEN, Caroline | JEFF, B.J. |
| CAMPBELL, H.H. | COOK, Henry | EISENBERG, John | GREEN, Charles | JEFF, E.N. |
| CAMPBELL, M.C. | COOK, William | EISENBERG, Julia | GREEN, Elizabeth | JEFF, G.A. |
| CAMPBELL, Thomas | CORK, Cab | ELLIS, James | GREEN, J. | JEFF, H.A. |
| CAMPBELL, Ulysses | CRADDOCK, John | ELLIS, Thomas | GREEN, J.A. | JEFF, Justin |
| CANADY, G. | CRANE, J.M. | ERSKLIM, H. | GREGORY, Martin | JEFF, Lewis |
| CANADY, H. | CRAVENS, Albert | ERSKLIM, L. | HADLEY, Adelaide | JEFF, W.E. |
| CANADY, James | CRAVENS, Sarah | ESKLISON, C. | HADLEY, Charles | JOHNSON, Andrew |
| CANADY, M. | CROLY, P. | ESKLISON, M. | HADLEY, Wallace | JOHNSON, C.W. |
| CANADY, Patric | CROLY, Patric | ESKLISON, S. | HAFFRIN, John | JOHNSON, James |
| | | | HAISLANE, C.A. | JOHNSON, Martha |
| | | | HALLOWELL, James | JOHNSON, Ransom |
| | | | HAMIL, G. | JONES, A. |
| | | | HARDY, Betsy | JONES, John |
| | | | HARDY, Charles | JUNE, Elias |
| | | | HARDY, Kattie | JUNE, Elizabeth |
| | | | HARDY, Moses A. | JUNE, Mira |
| | | | HARDY, Simon | JUNE, Moses M. |
| | | | HASTINGS, _____ | KELLEY, William |
| | | | HASTINGS, L.D. | KENT, Eliza |
| | | | | KENT, Elizabeth |

KENT, Erastus	ORDWAY, Jane	RHOADES, James B.	SLATER, Thomas	WENDELL, Abbie
KENT, Martha	ORDWAY, Luther	RHOADES, Jeremiah	SMITHSON, E.	WENDELL, Harly
KENT, Rhoderick	ORDWAY, Sarah	RHOADES, Lillie D.	SMITH, Amasa J.	WESSEN, Henry
KENT, Sarah	ORDWAY, Smith	RHOADES, Nellie J.	SMITH, Amy	WEST, John
KENT, William	OSTRACON, Charles	RHOADES, Olive M.	SMITH, Cora	WHEELER, Grattan
KENZART, Henry	OSTRACON, Eliza	RHOADES, William E.	SMITH, Elisabeth	WHEELER, James
KIES, A.C.	OSTRACON, Emma	RICHILEAU, John	SMITH, F.U.	WHIPPLE, E.C.
KIES, Amsae	OSTRACON, Joan	ROBINSON, John	SMITH, Julia	WHITE, Thomas
KIES, _____	OSTRACON, Katie	ROLF, J.G.	SMITH, Thomas	WHITEMORE, Betsy
LAER, John	OXELCON, C.W.	ROGERS, Whieman	SMITH, William	WHITEMORE, Marshall
LAFFERTY, Peter	OXELSON, Martha	ROSE, Amanda	SMITH, William	WHITEMORE, Moses
LARSON, James	OXELCON, Nally	ROSE, Eliza	SMITH, William R.	WHITEMORE, Samuel
LARSON, Joseph	PALMER, Andrew	ROSE, Lewis	SPENSER, Asa	WHITING, Cynthia
LASS, C.	PARKER, Charles	ROSE, Hubert	SPICH, Mastin	WHITING, Edwin
LAWSON, Arthur	PARKER, Charles	ROWLEY, Emeline	STONE, Earle	WHITING, Jonathon
LAWSON, Calvin	PARKER, Edward	ROWLEY, George	STONE, Emily	WHITING, Oliver
LAWSON, Sylvester	PARKER, Frank	ROWLEY, James	STONE, Martha	WHITING, Sarah
LIFFERING, S.	PARKER, Harry	ROWLEY, John	STONE, Prentice	WILLING, W.
LOVEL, W.	PARKER, J.	ROWLEY, Martin	STURGIES, Charles	WILLIAMS, _____
MCCARTY, H.	PARKER, James	ROWLEY, Nancy	STURGIES, Harriet E.	WILLIAMS, J.
MCCORWINE, C.	PARKER, James	RYAN, R.H.	STURGIES, Harriet	WILLIAMS, Jennie
MCCOY, G.	PARKER, Johnny	SADEVSTION, I.	STURGIES, Oscar	WILLIAMS, William
McMAHON, M	PARKER, Katie	SANDERS, M.	STUYVESSANT, James	WILLIAMSON, James
McMAHON, P.	PARKER, Lizzie	SCHENCK, Albert	STUYVESSANT, Mary	WILSON, Charles
McPHILBINY, James	PARKER, M.J.	SCHENCK, Burton	SULLIVAN, John	WILSON, James
MADDEN, Patrick	PARKER, May	SCHENCK, Jonathon	SULLIVAN, Michael	WILSON, Peter
MALSBURY, Alice	PARKER, May	SCHENCK, Sophia	SWANSON, John	WILSON, Sarah
MALSBURY, John S.	PARKER, Moses	SCHOAF, _____	SWANSON, P.	WINSLOW, Fitz
MALSBURY, Leigh	PARKER, Newton	SCHOAF, _____	SWARENS, A.L.	WINSLOW, Martha
MALSBURY, Lucy	PARKER, Sarah	SCHOAF, W.	SWARENS, Leander	WINSLOW, Resa
MALSBURY, Sanford	PARKER, Susie	SEGAR, John	SWARENS, Lewis	WINSOR, Carrie
MALSBURY, Sena	PARR, B.W.	SEGAR, Kathrine	SWARENS, Sylvia	WINSOR, Charles
MARSH, Edward	PASTER, James	SELLENS, Edna L.	SWEENEY, James	WINSOR, Moses
MARSH, Edward	PATRICK, James	SELLENS, James L.	SWINEHART, George	WISEMAN, Martha
MARSH, James	PATRICK, L.G.	SELLENZ, James	TALBOT, Delphine	WOODLEY, B.
MARSH, James	PATRICK, N.J.	SELLENZ, Louise G.	TALBOT, J.C.	WOODWARD, Jacob
MARSH, Joseph	PATRICK, Sarah	SEYMOUR, Augusta	TALBOT, John	WOODWARD, Martha
MARSH, S.P.	PERSALL, James	SEYMOUR, O.H.	TALBOT, John P.	WOODWARD, Sarah
MEHAN, John	PIERCE, Erastus	SEYMOUR, Edwin	TALBOT, Martha	WYATT, F.M.
MEHAN, M.	PIERCE, Marz J.	SEYMOUR, Eliza	TALBOT, Willard	WYATT, R.S.
MEHAN, M.	PIERCE, Minus	SHAFFER, E.	TAYLOR, E.	YORK, Betsy
MESENHELTTER, William	PIERCE, W.S.	SHARPE, John	TAYLOR, Fanny	YORK, Elias
METCALF, C.W.	PIERCESONS, John	SHARPE, Wesley	TAYLOR, Malon	YORK, James
MICHAEL, H.	POLSON, P.	SHEAN, Daniel	THOMAS, John	YORK, Sarah
MILES, Levica	PRENTICE, H.C.	SHEAN, Daniel Jr.	THOMAS, M.	ZIMMERMAN, Bunghart
MILES, G.S.	PRENTICE, Judson	SHEAN, James	TOBIN, Albert	ZIMMERMAN, Carolinda
MILLER, B.J.	PRENTICE, Martha	SHEAN, Mary	TUCKER, George R.	ZIMMERMAN, Charles
MILLER, B.F.	PRENTICE, Sarah	SHEAN, Sarah	TULLY, P.	ZIMMERMAN, David
MILLER, D.B.	PRENTICE, W.R.	SHEFFIELD, James	ULESON, E.	ZIMMERMAN, Gertrude
MILLER, Henry	PRENTICE, Willia	SHEFFIELD, Richard	UPDEGRAFF, Martin	ZIMMERMAN, Henrick
MILLER, Louise	PRESTON, James	SHEFFIELD, Sarah	UPPERMAN, J.W.	ZIMMERMAN, Martha
MILLER, Olive	PURDY, Andrew	SHEFFIELD, Thomas	VAN ORMAN, Demaris	
MILLER, Sidney D.	PURDY, Eliza	SHEHAN, M.	VAN ORMAN, Elizabeth	
MILLIGIN, H.	PURDY, Jane	SHIELDS, Alice	VAN ORMAN, Harvy	
MILLIGIN, James	PURDY, Mary A.	SHIELDS, Alice	VAN ORMAN, Isaac	
MOORE, Alex	PURDY, William	SHIELDS, Carrie	VAN ORMAN, Oliver	
MOORE, James	PURDY, William Jr.	SHIELDS, Daniel	VAN ORSDALE, Charles	
MORRIS, John	PUTNAM, _____	SHIELDS, Daniel	VAN ORSDALE, Henry	
MOORE, Metilda	RAWSON, Edgar	SHIELDS, Florence	VAN ORSDALE, James	
MULLIGAN, James	RAWSON, Hubbard	SHIELDS, G.	VAN SCOVIER, Abraham	
MURPHY, Robert	RAWSON, Martha	SHIELDS, Green	VAN SCOVIER, David	
MERLINGER, P.	RAYL, Thomas	SHIELDS, Leander	VAN SCOVIER, Jonathan	
NICHOLS, George	REED, _____	SHIELDS, Magg	WALKER, Frederick	
NICHOLS, Sarah	REID, Charles	SHIELDS, May	WALKER, John	
NOLAN, James	FEID, J.D.	SHIELDS, Minnie	WALTERS, William	
OCONOR, James	REID, Katie	SHIELDS, S.	WALL, N.	
ODONNELL, John	REID, S.A.	SHIELDS, Sarah	WALL, Oliver	
OLSON, Andrew	RHOADES, Alice A.	SHIELDS, Simon	WALTERS, Cathrine	
OLSON, C.	RHOADES, Annie	SHIELDS, W.G.	WALTERS, William	
ORDWAY, Elvira	RHOADES, Frank P.	SPOLTZ, M.	WATT, Thomas	

MAY 1983

RENO COUNTY BIRTHS - 1891

Name of Child	Date of Birth	Place of Birth	Father			Mother			Number of Births This Mother
			Name	Age	Birth Place	Maiden Name	Age	Birth Place	
--- (male)	7 Nov	Hutchinson	---	--	--	---	--	--	2
ADAMS, (female)	1 Aug	---	Wm. E.	49	KY	PRUITT, Belinda A.	43	IN	8
ALEXANDER, (female)	14 Jun	Hutchinson	Watson T.	24	OH	ANDERSON, Essie E.	20	OH	1
ALLISON, (female)	2 Jan	Sylvia	Wesley	32	OH	BOOK, Laura	30	OH	1
ALTENREAD, (male)	17 Aug	---	Joseph	33	VA	HAMMOND, Celia	22	VA	2
ALYRAM, Ema	1 Jun	---	Henry	--	IN	DARR, Mary	--	OH	2
ANDERSON, Fray	29 Jul	Sylvia	W. J.	33	TX	MEAD, Emma A.	33	OH	6
ASHLEY, (female)	23 Oct	Hutchinson	M. L.	43	IL	JUDSON, E. J.	42	IL	10
BARE, (female)	12 Apr	Hutchinson	Fred	--	Ger	_____, Nel	--	--	2
BARTLETT, (male)	26 Oct	Partridge	Jos.	31	CT	CROTTS, Mary	23	IL	1
BATES, (male)	12 Mar	1890 (not filed until 1891)							
		Kent	Jno. W.	30	IA	McKENZIE, Elma	33	IA	6
BEEBE, Carl	10 Feb	---	Carl	--	IA	CHAMBERS, Mary	--	IA	5
BENTLEY, (male)	21 Jan	Hutchinson	Albert	34	WI	JONES, Armenta	24	IA	2
BIRKEY, (male)	19 May	Huntsville Twp	Valentine	33	IL	OYER, Barbara	28	IL	1
BOONE, (male)	25 Jun	---	Chas.	28	KY	PATERSON, Dera	36	OH	5
BOONE, (female)									
BOONE, Cynthia M.	3 Jan	---	Samuel	40	KY	OSBORNE, Minnie	30	OH	6
BORDEN, (male)	3 Nov	Grant Twp	Jos.	--	--	JORDAN, Chloe	--	--	2
BOYD, (female)	4 Aug	Lodi Twp, Sego	Jno.	30	IL	ROONS, Minnie	21	MO	3
BRADBURN, (male)	30 Nov	Albion Twp	James	49	IN	MAXFIELD, Sarah Ann	31	KY	1
BRANCH, Lotta Orpha	21 Mar	Sego	Alvin E.	24	IN	FARMER, Martha	18	IA	1
BREWER, (female)	4 Nov	(date returned)							
		Hutchinson	---	--	--	BREWER, Effie	18	IL	1
BRICE-NASH, Kelvie	18 Dec	1888 (not filed until 1891)							
		Salt Creek Twp	Chas. Edwin	30	Eng	McKELVIE, Margaret	23	Eng	1
BRICE-NASH, Elsie B.	22 Sep	1890 (not filed until 1891)							
		Salt Creek Twp	Chas. Edwin	32	Eng	McKELVIE, Margaret	25	Eng	2
BROOKER, (female)	23 Mar	Hutchinson	Harry S.	29	IA	CHAPPELL, Floy S.	23	NY	1
BROOKS, (male)	3 Mar	Arlington	---	--	--	---	--	--	8
BROWN, (female)	9 Apr	Hayes Twp	Sidney	24	MD	STARK, Emma	22	IL	1
BUTLER, (male)	29 Sep	Hutchinson	Isaac	36	KY	CROUCH, Amanda	24	KS	1
BUTTS, Willie	15 Mar	Sylvia	Charles	37	Eng	BRICE, Florence	36	NY	1
CAGLE, (female)	21 Aug	Sego	Geo.	--	--	---	18	--	1
CANTHON, (male)	12 May	Albion Twp	G. C.	31	IN	FRENCH, Lissie	21	IN	1
CARES, (male)	16 May	Hutchinson	S. A.	--	--	TAFT, _____	--	--	1
CAREY, (male)	28 Jul	Hutchinson	Emerson	28	IN	PUTERBAUGH, May A.	24	--	1
CARMICHAEL, Willie M.	22 Oct	Valley Twp	Geo.	24	--	REED, Nettie C.	20	--	2
CARPENTER, (male)	4 Mar	Hutchinson	Robert	39	IA	HERBERT, Lizzie	36	MD	2
CARTER, (male)	10 Oct	Hutchinson	Allen	32	IN	REED, Mary E.	24	IA	4
CASKEY, (female)	28 Feb	1892 (date returned)							
		Hutchinson	James	--	--	SCOTT, Lura	--	--	3
CECIL, (male)	4 Aug	Arlington	Benedict	--	--	---	--	--	7
CLARK, (male)	13 Feb	Hutchinson	John	44	IL	TONY, Jennie	30	IL	-
CLIFTON, Flavel	19 Jun	Hayes Twp	Jesse L.	24	MO	DALE, Laura	24	MO	3
CLOTHIER, (male)	17 Dec	Huntsville	Alva	20	--	SPENCE, Ettie E.	18	IL	1
COLE, Joseph G.	3 Jul	Grove Twp	John Samuel	25	KY	_____, Martha E.	17	IN	1
CONNEL, (male)	25 Aug	Hutchinson	Robert J.	--	Ire	CONNEL, Anistasis	--	--	1
CONNEL, (female)	8 Nov	---	---	--	--	---	--	--	5
COUNTERMAN, (female)	10 Nov	(date returned)							
		Hutchinson	Wm. H.	28	OH	RICH, Rachel	38	IN	8
COX, Flora	25 Jan	Grove Twp	Oscar	31	IN	PORTER, Lydia	24	MO	2
CURRAN, (male)	7 Nov	Hutchinson	Richard A.	--	Ire	HOLLAND, Ellen	--	Ire	2
DAVIS, (female)	1 Oct	Arlington	John T.	32	IN	COCHRANE, Mabel	23	WI	1
DAVIS, (male)	7 Nov	Hutchinson	Walter	--	--	---	--	--	7
DAVIS, (male)	31 Oct	Castleton Twp	William	32	IA	FALL, Libbie M.	22	IN	4
DAFFORN, (male)	28 Oct	Roscoe Twp	Charles	40	Eng	WISEL, Ida F.	33	IN	5
DAYHOFF, (male)	4 Oct	Langdon	Insley G.	24	IN	BORDEAUX, Almira	19	KS	1
DUNVATE, (female)	13 Dec	Hutchinson	John	31	--	---	25	--	6
DYSON, Geo. Wm.	21 Sep	Valley Twp	Thos. Elijah	31	GA	CARMICHAEL, Isabelle	21	KS	2
DYSON, Lena Leota	3 Nov	Valley Twp	John Simpson	27	GA	FULLER, Mary Ellen	20	KS	1
EDMUNDS, (male)	12 Apr	Hutchinson	Edward	31	OH	BEATTY, Sarah Jane	29	OH	6
ELLSWORTH, (female)	10 Nov	Salt Creek Twp	E. E.	27	IL	WRIGHT, G. G.	19	KS	2
ENGLAND, (female)	16 Oct	---	Wm.	--	IL	SMITH, _____	--	IL	4

Name of Child	Date of Birth	Place of Birth	Father		Birth Place	Mother		Birth Place	Number of Births this Mother
			Name	Age		Maiden Name	Age		
ERVIN, (male)	11 Dec	Salt Creek Twp	Phillip	52	Ger	_____, Catherine	34	IA	1
EWING, (female)	5 Jul	---	James	--	IL	LEACH, _____	--	IL	3
FIELD, (female)	4 Oct	Roscoe Twp	Herbert W.	40	MI	ROSS, Nellie	31	IA	6
FLINT, (female)	13 Jan	Hutchinson	Howard T.	25	MO	PYLE, Emma	23	MO	2
FORRESTER, (female)	11 Dec	Nickerson	Harry	31	PA	MARTINS, C. L.	27	KS	2
FOWLER, (female)	8 Feb	Hutchinson	James	--	--	ROSE, Ada	--	--	2
GARDNER, (male)	26 Dec	Highland	---	39	--	---	38	--	7
GARDNER, (male)	30 Jul	So. Hutchinson	John	21	IL	MILLHAUSER, Anna	21	MO	1
GOOKINS, (male)	17 Mar	Clay Twp	Hiram Jackson	37	OH	MAGEE, Mary Ann	31	OH	3
GREESON, (female)	12 Apr	Hutchinson	Albert	25	IL	VANATTA, Edith	18	IA	1
GUYER, (female)	13 Aug	Arlington	Thomas	26	PA	BAGGS, Annie	20	OH	1
HALL, (female)	27 Feb	1892 (date returned)							
HAMBACKER, (male)	18 Dec	Hutchinson	Thomas	--	Eng	---	--	Ger	1
HAMMOND, (male)	23 Oct	Valley Twp	Wm. E.	24	--	DIX, Mary Ellen	19	--	1
HANDY, (female)	26 Sep	---	Thomas	30	VA	SHORT, Addie E.	26	IN	3
HASLETT, (male)	26 Sep	Hutchinson	G. G.	29	IL	HUTCHINSON, Jessie	27	IL	2
HAWKINS, (male)	17 May	Lincoln Twp	I.	--	--	KINKADE, _____	--	--	4
HAYMAN, (male)	6 Mar	Sylvia	Elijah L.	39	OH	BOOKHAVER, Cathrena	34	OH	9
HAYMAN, (female)	6 Jan	Hutchinson	Edward G. B.	26	Eng	HUTCHINSON, Marian	22	Scot	2
HENRY, (male)	7 Aug	Clay Twp	James Alison	28	MO	TURKLE, Martha J.	27	OH	2
HERMAN, (male)	8 Dec	Nickerson	Lawrence	37	Ger	MIHOFFER, E. Theresa	32	Ger	5
HERRON, (male)	9 Nov	Salt Creek Twp	Ira W.	28	IL	HERRON, N. C.	24	MO	3
HERRON, (male)	5 Feb	Hutchinson	David P.	46	IA	BLAKE, Laura A.	40	IA	3
HERYER, (male)	27 Jul	Hutchinson	David	43	MO	SPERRY, Ida May	38	IL	2
HICK, (female)	18 Mar	Hutchinson	James A.	24	IA	DOWNES, Lillie J.	22	IL	2
HIETT, Clara	27 Dec	Nickerson	G.	26	--	---	26	--	1
HINSHAW, (male)	8 Jul	Huntsville	T. E.	32	MO	WILKINSON, Anna	24	MO	3
HOBSON, (male)	23 Sep	Hutchinson	William	24	GA	BREWER, Caroline	20	--	2
HODGES, Lillian G.	7 Oct	Hutchinson	Josiah L.	23	KY	VICTOR, Victoria	18	KY	1
HOLLISTER, Edward S.	12 May	Arlington	Edward	30	IL	ALBAN, Jennie	20	IN	1
HOUSE, Harold D.	3 Feb	---	Delbert G.	23	WV	CRIPPIN, Adell	21	OH	1
HUGHES, (female)	7 May	Hutchinson	A. J.	37	PA	HUFFMAN, Lola	20	OH	1
HUTCHINSON, (male)	4 Nov	(date returned)							
HUXMAN, (male)	1 Jan	Hutchinson	John E.	29	MI	GORDON, Nellie R.	22	IN	1
HYDE, Wm. Clark	9 Mar	Albion Twp	H.	29	IA	GRABER, Mary	28	Ger	3
JACKSON, (male)	9 Mar	Hutchinson	Eugene W.	28	NY	COUGHENOUR, Mabel	26	OH	3
JACKSON, (male)	21 Sep	So. Hutchinson	Clemon	28	OH	HAMILTON, Annie	23	WV	2
JACKSON, (male)	17 Apr	Hayes Twp	Wm. Smith	31	KY	GILL, Maria B.	29	MO	4
JAMES, (female)	4 May	Sylvia	A. J.	35	IL	HENDRY, Hettie	35	OH	7
JAMES, (male)	27 Oct	Haven Twp	Harvy G.	28	IN	TYNER, Rose E.	23	IN	3
JARRETT, (male)	2 Nov	Hutchinson	---	--	WV	---	--	--	4
JEWELL, (male)	6 Aug	Hutchinson	A. M.	40	ME	WICKHAM, Emma G.	38	CT	4
JOHNSON, (male)	26 May	Hutchinson	Ben Frank	39	IN	PARTHENBERG, Catherine	30	IN	6
JONES, (male)	5 Aug	Hutchinson	Edgar	22	IA	GRANE, Myrtle	20	IN	1
JONES, (male)	13 Jan	Hutchinson	H. C.	27	IL	ORTMAN, Nellie M.	21	IL	2
JONES, (male)	27 Feb	1892 (date returned)							
KAUFMAN, (male)	3 Nov	Hutchinson	Harry	--	MO	MAUDLIN, _____	--	IL	1
KIGER, (male)	3 Nov	Center Twp	David	36	--	TROYER, Mary	38	--	9
KING, (male)	3 Nov	Hutchinson	C. A.	31	IN	---	28	IN	2
KING, (male)	20 Jan	Pretty Prairie	Benjamin	40	MO	KING, Mary	36	MO	8
KIRKLOFF, (female)	24 Dec	Nickerson	W.	34	--	CLARK, F.	32	--	1
KENT, (male)	20 Jan	Hutchinson	David W.	--	--	---	--	--	5
KNODE, (not given)	27 Feb	1892 (date returned)							
LASH, (female)	3 Mar	Hutchinson	Frank	--	Ger	---	--	Ger	4
LEONARD, (male)	5 Feb	Hutchinson	Gustavus W.	29	IN	CRONCHLEY, Mary	26	Eng	3
LOCK, (female)	5 Feb	Hutchinson	Daniel	--	NY	OLESON, Anna	--	Swed	1
LOCK, (female)	3 Jan	Hutchinson	Geo. M.	29	IA	CRANE, Jennie L.	28	IA	3
LOTTRIDGE, Newton D.	6 Sep	Sylvia	Milton M.	33	OH	SMITH, Lydia J.	--	WV	3
LYMAN, (male)	13 Oct	Valley Twp	Harlow A.	32	NY	PADGET, Rebecca	24	KY	4
LYNCH, John D.	17 Apr	Arlington	A. J.	--	--	JOBES, Harriet	--	--	7
MALIN, (male)	21 Dec	Hutchinson	Geo.	48	MO	COONEY, Hannah G.	38	PA	14
MARSHALL, (male)	22 Feb	---	Wm. H.	45	PA	BURFCH, Nannie	30	IN	3
MARTIN, (male)	27 Feb	1892 (date returned)							
MELVIN, (female)	10 Nov	Hutchinson	John	--	Ire	KREPPS, Clara	--	PA	1
		Nickerson	B. W.	28	MO	DUNCAN, Elda	20	MO	2

MAY 1983

Name of Child	Date of Birth	Place of Birth	Father			Mother			Number of Births this Mother
			Name	Age	Birth Place	Maiden Name	Age	Birth Place	
METCALF, (female)	29 Mar	Hutchinson	Lewis H.	35	OH	WILLIAMS, Rosa Lee	24	OH	3
MC ATEE, (male)	25 Sep	Langdon	Nicholas	33	MO	WARREN, Lenora	21	MI	1
MC ATEE, (female)	14 Nov	Loda Twp	Olliver	24	MO	SIMMONDS, Anna	17	KY	1
MC COLM, (male)	22 Dec	Hutchinson	Wm.	27	OH	HODGE, Ida E.	24	IL	1
MC COMB, Bruce	24 Aug	Lodi Twp	W. A.	33	MO	BISHOP, Lenora	26	WI	1
MC CUNE, (female)	25 Sep	Sylvia Twp	Henry	29	IA	CARSON, Ida May	20	IA	1
MC CUNE, (female) - twins									
MC DONALD, (female)	4 Nov	Nickerson	Wm.	26	MO	_____, L. E.	19	MO	3
MC KBOWN, (male)	15 Jul	Abbyville	John	40	Ire	COPENHAVER, Minnie	24	VA	4
MC MAHAN, (male)	15 Oct	Castleton Twp	Albert H.	25	IA	MAHER, Katie	21	--	1
MC MURRY, (female)	2 Oct	Lincoln Twp	Wm. E.	29	TN	UHL, Ida L.	25	VA	3
MILLER, (male)	21 Dec	Arlington Twp	Edward A. E.	31	PA	COLVER, Cora May	30	OH	1
MILLER, (female)	18 Apr	1889 (returned Feb 1892)							
		Hutchinson	Geo. S.	--	--		--	--	7
MINNICK, (male)	7 Oct	Pretty Prairie	George F.	24	OH	DENNISON, Alice A.	20	IA	2
MITCHELL, (female)	11 Oct	Arlington	Robert	24	IL	DAVIS, Jenette	24	IN	1
MONJAY, Clarence Lafier	13 Aug	Valley Twp	W. D.	31	VA	MC CART, Emma Eliza	23	IL	2
MORGAN, (male)	4 Jan	Reno Twp	Edward	47	Ire	DU KELOW, Elizabeth	29	Ire	1
MULLEN, (male)	3 Dec	Hutchinson	Martin	--	Ire	---	--	Ire	2
MURRAY, (female)	8 Mar	1890 (not filed until 1891)							
		Sylvia	Frank	30	IL	HOLMES, Eva	25	IL	4
NELSON, (male)(stillborn)	4 Dec	1890							
		Sylvia Twp	Archie	--	KY	---	--	IN	4
NORMAN, Donald Rugan	31 Jul	Hutchinson	J. T.	49	GA	RUGAN, Elizabeth	29	PA	1
NUESBAUM, (female)	31 Dec	Hutchinson	Ben	26	--	BERGHIRM, Ray	23	--	1
OBEE, (male)	28 Dec	Lincoln Twp	Morton C.	25	OH	HERSHBERGER, Frankie	25	OH	1
									2
PAYNE, Rachel	29 Nov	Haven	Jno. R.	40	Eng	VINCENT, Rachel	35	IA	2
PENNICK, (female)	5 Jul	Hutchinson	Wm. N.	26	WI	GRAY, Alice	22	PA	2
PIERCE, (male)	5 Oct	Hutchinson	Elra Stanton	23	IA	HOSPELHOIN, Mary	22	IL	3
POE, (male)	2 Jun	Hutchinson	Joseph D.	22	KS	SHAFER, Tabitha	22	PA	1
PRICE, Hardy	27 Sep	Reno Twp	Walter N.	25	IL	HARDY, Jane F.	21	MO	1
PRICE, Vera Viola) -twins									
PUGH, (male)	16 Mar	Hutchinson	Chas. S.	32	IN	SWARTZ, Lizzie	21	IN	2
PUGH, Hazel Dell	25 Apr	Hutchinson	Harry J.	30	IN	CLEMENTS, Della F.	23	IL	2
PURVIS, John C.	16 Oct	Castleton Twp	John F.	38	--	SHADDOCK, Nina	22	--	2
QUERFIELD, Chas B.	8 Mar	Valley Twp	Gus	35	Ger	COMBS, Mary L.	25	IL	4
REASON, (female)	5 Dec	Pretty Prairie	G. W.	35	--	ARMSTRONG, Martha	26	--	4
#RHITTER, (male)	8 Jan	1892 (date returned)							
		---	Chas.		MO	SOURS, Hattie	--	MO	4
#RHITTER, (female)	16 Nov	Hays Twp	Chas.	30	MO	SOUR, Catherine	20	MO	4
RICHARDS, (female)	15 Dec	Hutchinson	J. L.	35	IL	BIXLER, C. M.	31	IL	3
RICHART, (female)	2 Nov	Nickerson Twp	David	37	MO	COCHRAN, Mary	28	PA	2
RILEY, (male)	16 Oct	Hutchinson	Richard D.	30	MO	BENNETT, Eliza	19	MO	1
RITCHIE, (male)	31 Dec	(date returned)							
		Nickerson	Jacob	47	PA	_____, N.	43	IN	6
ROGERS, Ada	23 Aug	Huntsville Twp	Simpson Bishop	35	IN	SENIOR, Anna Laura	29	IL	5
RONEN, (female)	19 Jan	Hutchinson	---	--	--	WIMPLEBOYER, Eva	--	--	1
RUNG, (female)	17 Aug	Partridge	Geo.	29	Ger	GRIMM, Lillie	23	IN	1
RUSSELL, (female)	29 Oct	Hutchinson	Ed	27	--	HAYDEN, Ida	23	IL	1
SCHMITT, (male)	5 Oct	Albion Twp	Daniel W.	40	Ger	GRABER, Annie	31	Russia	6
SCHULE, (male)	7 Dec	Haven Twp	Henry	45	Ger	_____, Lizzie	23	Ger	5
SCORESEBY, (female)	1 Jul	Troy Twp	Fred	28	NY	PARKS, Estella	27	IN	1
SEMONS, (female)	26 Dec	---	David	28	Rus	GRISM, Martha	27	Rus	2
SEYMOUR, (female)	18 Sep	Huntsville Twp	Homer	40	IN	CHINN, Mary	34	IN	2
SHAHAN, (female)	1 Dec	Hutchinson	Walter B.	25	--	LYON, _____	24	--	2
SHAW, (male)(stillborn)	8 Dec	Nickerson	Robert	23	OH	GROVES, L. E.	21	IN	2
SHEPHERD, (female)	25 Dec	Hutchinson	Howard T.	23	OH	SKEEN, Leota	20	MO	1
SHUNK, Edna Louise	10 Oct	Hutchinson	Josiah P.	29	OH	GREGORY, Bertha M.	29	OH	2
SHYRICK, Clinton	29 Oct	Hayes Twp	F. S.	20	IN	KRAUL, Clara May	16	OH	1
SIMS, (male)	21 Dec	Hutchinson	C.	40	--	TILLERY, _____	35	--	6
SINCLAIR, (male)	23 Apr	Arlington	R. F.	--	--	CURREN, Ida	--	--	4
SLAYTON, (female)	14 Dec	Haven Twp	R. O.	45	--	HENDEN, Hannah H.	34	--	9
SLEEPER, (female)	8 Dec	Nickerson	J. S.	34	IN	_____, E. E.	32	IN	6
SMITH, (female)	21 Nov	Valley Twp	Chas. Clemens	20	MO	FULK, Mamie May	20	IN	1

Were these two different families?

Name of Child	Date of Birth	Place of Birth	Father			Mother			Number of Births this Mother	
			Name	Age	Birth Place	Maiden Name	Age	Birth Place	Births	this Mother
SMITH, (female)	1 Sep	Pretty Prairie	Silas	37	WV	MC GRAY, Mary	34	PA	7	
SMITH, (female)	6 Mar	Abbyville	Wilson	30	IL	THOMPSON, Alice	29	IL	1	
SMITH, Augustus Clinton	15 Nov	Partridge	Thomas G.	25	MO	LOVELL, Adeline R	18	KS	2	
SMITH, Harry Leon	10 Sep	Valley Twp	Holloway G.	27	VA	LEMON, Ida Mary	21	MO	3	
SMITH, Harvey	29 Dec	---	Geo.	25	IL	LARON, Birdie	17	IN	1	
SPILLMAN, (female)	2 Jan	Pretty Prairie	Wm. R.	29	IA	SMITH, Rosetta	30	IL	4	
STOUT, (male)	7 Aug	Hutchinson	John Franklin	30	OH	STITT, Lida M.	28	OH	1	
STOUT, (female)	30 Nov	Little River Twp	Thomas G.	26	KS	HARVEY, Hanna J.	24	Can	1	
STRONG, (male)	11 Jun	Hutchinson	Albert J.	21	MO	BRINGLE, Alora A.	20	IN	3	
TEASON, Ditrie	7 Dec	Little River Twp	Ditrie	35	Rus	WILLIAMS, Anna	23	Rus	3	
TEASON, Gerhard	18 Nov	---	Earnst	22	Ger	PROPER, Mary	22	--	1	
TEDRICK, (male)	19 Mar	Hutchinson	Harvey P.	25	OH	GIBSON, Alice	21	OH	2	
THARP, Harold	30 May	Troy Twp	Tilghman	--	OH	CONGILL, Lida	--	--	1	
THOMAS, (male)	26 Nov	Hutchinson	David	24	IA	ZIPIE, Ida L.	17	OH	1	
THOMPSON, (male)	23 May	Hutchinson	George	28	Eng	POTTER, Ruth	27	Eng	3	
TOWNSEND, (female)	21 Sep	Valley Twp	William Jesse	32	IN	RWLINGS, Agnes L	20	MO	1	
TRACE, (female)	8 Feb	Roscoe Twp	Daniel	--	IN	MC KINNEY, Bell	--	IL	1	
TRUITT, (male)	14 Jul	Langdon	John	25	IN	DAYHOFF, Ella	22	IN	1	
UPDEGRAFF, (male)	30 Jul	Hutchinson	George C.	38	PA	ROSS, Florence L.	26	PA	2	
UPDEGRAFF, (female)	---	---	---	---	---	---	---	---	---	
VANDERPOOL, M. E.	28 Jan	Sego	W. D.	38	--	HEHIR, M. E.	20	--	3	
WALKER, Minnie J.	16 Aug	Hutchinson	George S.	24	MI	WENTZ, Margaret	23	WV	1	
WALLACE, Benjamin	5 Mar 1890	(not filed until 1891)	---	---	---	---	---	---	---	
WARFIELD, Minni M.	6 May	Sylvia Twp	Nicholas	36	IL	LISTON, Carrie	36	OH	5	
WARNE, Nellie Glass	12 Feb	Sego	Wm. E.	27	IL	WILLIAMS, Lizzie	24	IL	3	
WEBB, (male)	3 Nov	Hutchinson	David M.	53	OH	MARINE, Melvina	43	OH	8	
WELCH, (female)	4 Apr	Hutchinson	Otto	32	IN	FISHER, Minnie	33	--	6	
WHITE, (male)	7 Nov	Hutchinson	Samuel	27	IN	CLINE, Nina	20	IA	2	
WHITE, Lucy V.	6 Mar	Plevna Twp	Charles	31	IL	JARVIS, Alice	22	IA	4	
WILBURN, Maggie E.	13 Oct	Sego	John	21	NY	REESE, Lillie	22	KS	1	
WILLIAMS, (male)	30 Oct	Hutchinson	Jno. W.	37	IL	CAGLE, Mary M.	36	IL	8	
WILLIAMS, Chas.	26 Feb	---	Augustus W.	--	--	Alice	--	--	1	
WILSON, (female)	26 Aug	Hutchinson	William	--	TN	SMITH, Sarah	--	OH	4	
WILSON, (male)	27 Jul	Hutchinson	Burnz L.	22	OH	Lois	19	IA	2	
WOODARD, (male)	8 Nov	Valley Twp	Thomas E.	25	IL	FAITZER, L.	18	IL	2	
WRAY, (male)	19 Jul	So. Hutchinson	Wm.	38	OH	MOURN, Ida	27	OH	5	
YATES, (not given)	27 Feb 1892	(date returned)	George	29	IN	WILFS, Hattie	17	IA	1	
		Hutchinson	Douglas	--	KY	BORDERS, ---	--	KY	3	

We are grateful to the following people for copying these birth records as well as those appearing in the February issue:

Delma ASHCRAFT Carrolyn MILLER
Leta BECHTOL Debbi SNYDER
Jolene COOK Lydia STREETER
Everett WELLS



MAY 1983

BRIEF SUMMARY OF SENATE BILL 905-
"NATIONAL ARCHIVES AND RECORDS
ADMINISTRATION ACT OF 1983"

(This bill is) legislation which would separate the National Archives and Records Service (NARS) from the General Services Administration (GSA) and establish the National Archives and Records Administration (NARA) as an independent agency in the executive branch. . . . the bill also proposes to: One, provide for the appointment of the Archivist by the president, with Senate confirmation, and two, return statutory authority for the Nation's archival and records management programs to the Archivist of the United States. . . . (There is) growing understanding within the Senate that the plight of the Archives is serious and that independence for NARS is a crucial ingredient for strengthening the Archives in the future. . . . (and that) NARS' budget has suffered over the years, even while GSA's demands of the agency have increased substantially.

All the dangers of a politicized Archives, without the necessary independence, became evident when President Nixon resigned. . . . (and there is concern that) trouble can arise regularly from depriving the Archivist of independence, and placing issues that require expert archival judgments in the hands of political appointees.

(The sponsors of the bill also contend) that the pattern of inadequate funding stems directly from NARS' organizational placement with GSA (and that) NARS needs to be made independent, to be its own advocate, to compete for a fair share of the tight resources of the Federal budget. . . . Maintaining the integrity of the full cycle of records has always been fundamental to the mission of NARS. This concept includes records management responsibilities in the broad sense, not just preserving, and ultimately making available to the public, documents of lasting importance. . . . (and) reorganizations which may be appropriate for the rest of GSA do not work for NARS, since NARS has never fit well into GSA. . .

Nineteen hundred and eighty-four marks the 50th anniversary of the National Archives; restoring the independence of NARS would be a particularly appropriate celebration.

Nineteen hundred and eighty-four is also a year immortalized by George Orwell's frightening vision of what the future would bring. Orwell's totalitarian society was characterized by its flagrant distortion of history; in the absence of free speech and thought, history could be rewritten periodically to serve the interests of the government and manipulate the people.

Our respect for history is one reason that our country bears no resemblance to Orwell's vision. Respect for history goes hand in hand with our commitment to a free press and our freedom of speech and thought. We can demonstrate again our recognition of the importance of history by moving to insure the strength and independence of the National Archives.

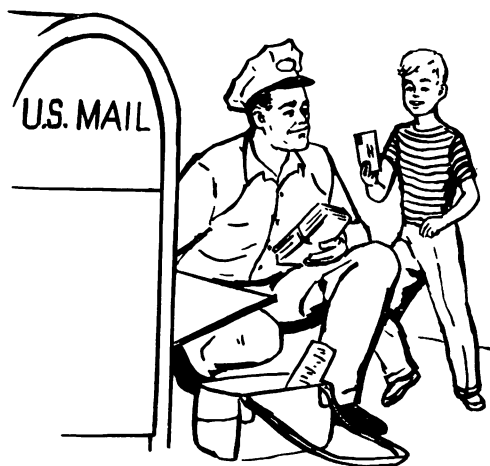
--from the Congressional Record,
March 23, 1983

We encourage you to write your representatives in the United States Congress urging them to support this bill.

NANCY LANDON KASSEBAUM (co-sponsor of bill)
304 Russell Senate Office Building
Washington, D.C. 20510

BOB DOLE
2213 Dirksen Senate Office Building
Washington, D.C. 20510

DAN GLICKMAN
1507 Longworth House
Washington, D.C. 20515



Queries

Information desired on Eleanor COURTNEY PHILLIPS, who died in Sylvia, KS in 1900. "Ellen" and John PHILLIPS had a daughter Mary who married Alfred GREEN. Was the Nelson PHILLIPS mentioned in the 1891 births published in the February Newsletter Ellen's son? John PHILLIPS, 8105 MacArthur Blvd., Cabin John, Maryland 20818.

Will CHANEY born 5 Nov 1888 Lebo, KS, son of John and Mary (LONG SOLOLMON) CHANEY. Grandson of Hiram and Martha Ann THOMPSON CHANEY. John had a brother Sanford Hiram CHANEY who was living in Hutchinson in 1915. If you can help with this family, contact Herb ZIMMERMAN, 3519 Capulin Drive, Loveland, Colorado 80537.

Need information of Ida (MONTGOMERY) DAY born 1879 in Kansas, daughter of Samuel and Sadie MONTGOMERY DAY who lived at 215 E. A, Hutchinson, KS in 1912. Dayle PURCELL, 320 North 8th, Missouri Valley, Iowa 51555.

William B. HINERMAN born 2 Sept 1863 and died 1888, son of George and Margaret Jane (ERLEWINE) HINERMAN. This family was from Livonia, Missouri. William worked for the railroad. We don't know where he died or was buried. We have information on his family that we would be willing to share. Winnie CHILDERS, 16285 East 86th North, Owasso, Oklahoma 74055.

Information desired of Mary Alice FLY (or FLIE) who was born 19 Sept 1871 to F.C. and Sarah Ann (BACON) FLIE. They were living in Clay Twp., Reno Co., KS in the 1875 census. David STOCKWELL, 6107 West 84th Ave., Arvada, Colorado 80003.

Am interested in the descendents of Andrew Jackson LOWE and Florence THORNLEY, married 19 October 1881 in DeWitt Co., IL. Also interested in surnames BYERS, MORSE, STINEBURG, McDEEVER and LOWE. Kathleen A. LOWE, 3215 Granada, Elmonte, CA 91731.

NEW MEMBERS

The Reno County Genealogical Society extends a warm welcome to the following new members. Each has been asked to fill out a four generation ancestor chart. Information from these charts will be transferred to the SURNAME FILE which is housed in the Kansas Room of the Public Library.

Vernamae (VARDY) CASE
221 E. Blanchard
So. Hutchinson, KS 67505 662-9940

Marie (WEBSTER) COFFMAN
1403 Cochran
Hutchinson, KS 67501 662-3046

Mr. & Mrs. C.J. COOPER (Charlotte FINLEY)
5807 W. Northview
Glendale, AZ 85301 (602) 934-4843

Opal O. (MATLOCK) CULVER
309 E. 15th
Hutchinson, KS 67501 665-6204

Willa DARR
200 N. Main
Stafford, KS 67578 234-5008

Derek FARMER
329 E. Sherman
Hutchinson, KS 67501

Mrs. Owen S. MARDIS
Rte. 2, Box 222
Newcomerstown, OH 43832

Mr. & Mrs. Gerald D. NIXON (Baunita TEMPLE)
P.O. Box 3
Lyons, KS 67554-0003 257-3843

Mr. & Mrs. Alan E. RATZBURG (Stephanie GINGRICH)
78 Lammerhaven Court
San Jose, CA 95111

Mrs. Neil RING (Carol Jean LADD ALLEN SMITH)
2376 Phillips
Berkley, MI 48072

Freda (McNICKLE) SHULER
RFD
Sylvia, KS 67581 486-3286

MAY 1983

Items available through THE RENO COUNTY
GENEALOGICAL SOCIETY, P.O. Box 5,
Hutchinson, KS 67501:

EARLY MARRIAGE RECORDS OF RENO CO.
\$20.00 plus 1.50 postage & handling
Kansas residents add 70¢ sales tax

CEMETERY RECORDS OF RENO CO.
\$20.00 plus 1.75 postage & handling
Kansas residents add 70¢ sales tax

Guide to RENO COUNTY RECORDS
booklet - \$1.50

Family Sheet Packet ---- \$1.00
Ancestor Sheet Pkt. ---- 1.00
Census Sheet Packet ---- .40

Vital Records Sheets -- .05 ea.
Family Sheets -- .05 ea.
Ancestor Sheets -- .05 ea.
Census Sheets -- .05 ea.

Add 50¢ postage & handling for each
Family or Ancestor Packet ordered.

Workshop packets available through Becky
HATTON, Hutchinson Public Library, 901 N.
Main, Hutchinson, KS 67501:

Beginners Workshop on Genealogy - \$1.50
Advanced Workshop on Genealogy - \$1.50
How to Use Your Public Library - \$2.50

Kansas Roots, Non-genealogy books and
Family Illustrated History - 75¢
Passenger Lists and Naturalization
Records - \$1.50
Enhance Your Genealogy With Local
History - \$1.50

Sources for Genealogy - \$1.50
Telephone Book Research - \$1.50
Our Genealogical Trips to SLC and
Ft. Wayne - \$1.50

If ordered by mail, add 35¢ per packet for
postage.

* * * * *

Reno County Genealogical Society
THE NEWSLETTER
Jayne (KOEPE) PURCELL, Editor
P. O. Box 5
Hutchinson, Kansas 67501

Non-profit Organization U.S. Postage PAID Hutchinson, Kansas Permit No. 171
